

Product datasheet for **MG208691**

Aaas (NM_153416) Mouse Tagged ORF Clone

Product data:

Product Type:	Expression Plasmids
Product Name:	Aaas (NM_153416) Mouse Tagged ORF Clone
Tag:	TurboGFP
Symbol:	Aaas
Synonyms:	AAA; ADRACALA; D030041N15Rik; GL003
Mammalian Cell Selection:	Neomycin
Vector:	pCMV6-AC-GFP (PS100010)
E. coli Selection:	Ampicillin (100 ug/mL)



[View online »](#)

ORF Nucleotide Sequence:

>MG208691 representing NM_153416
 Red=Cloning site Blue=ORF Green=Tags(s)

TTTTGTAATACGACTCACTATAGGGCGGCCGGGAATTCGTCGACTGGATCCGGTACCGAGGAGATCTGCC
 GCC**CGGATCGCC**

ATGTGCTCCCTGGGTTGTTCCCCCGCCGCCCTAGAGGTCAAGTCACCTGTATGAGCACAAATACG
 AGCTGGTGACCGCAACAGCTATGAGAGCCCGCTCCCGACTTTCGGGGCCAGTGGATCAATCTTCTGT
 CCTACACCTGACCAAGGATCCCCAAAAGCCCCAGGGAGGCTGGACCATGGTACAAGAACTGCCTTCATC
 CATCACCGTGAGCAAGTGTGGAAGAGATGCATCAATGTTTGGCATGATGTGGGCTTTTTGGCGTCTGA
 ATGAAATTGCGAATTCAGAGGAAGAAGTGTGAGTGGGTAAAGACAGCCTGCAGCTGGGCCCTGGCTCT
 CTGTGGCCGCGCCTCCTCACTCCATGGCTCCCTGTTTCCACACCTCTCTCTCAGGAGTGAAGATCTGATT
 GCTGAATTTGCCAAGTAACTAACTGGTCCAGTGTCTTACGGGTCTTGCCTGGCATCTCACACCA
 ACAAGTTTGCAGTGGCCCTGCTGGACGACTCCATCCGTGTTTATAATGCCAACAGCACTATAGTTCCCTC
 CCTGAAGCACCGTCTGCAGCGAAATGTAGCAGCCTTGGCCTGGAAGCCCCCTCAGTGCCTCTGTCTGGCT
 GTGGCCTGCCAGAGCTGTATTCTCATCTGGACCTAGACCCCACTTCTTATCTACGAGACCTCCTCTGT
 GCTGCGCCAGGTGTTGTCTCACCTGGGCACACACCAGTCACTAGCTTGGCTTGGGCCCAATGGGGG
 GTGGTGTCTCAGCCTCACCTGTAGTGTGTTATTCTGGTATGGGACGTTTCAACAGAGACTTGTGTC
 CCCCTTCTTGGTTCCGAGGAGGAGGGTTACCAATCTGCTGTGGTCCCCAGATGGCAGCAAAGTCTGG
 CTACTACTCTTCTGCCGTCTTTAGAGTCTGGGAGGCCAGATGTGGACTTGTGAGGCGTGGCCAACTCT
 TTCTGGGCGTGCCAGACTGGCTGCTGGAGTCCAGATGGAACCGACTGCTGTTCACTGTATTGGGGAA
 GCATTAATTTATCCTTGTCAATCCAGAACGATGTGGAACAGGGAAAGGACATGTTGGAGTGCAAAGT
 CAGCAACCATCGTAGCAGATCTTCTGAGACAACAATTCAGACCCAGATGGAGAGGAGCGACTCGGGG
 AGAGCCCACTCCATGGTGTGGGACCCAAGTGGTGAACGCTGGCTGTGCTCATGAAAGGAAACCCACAG
 GTTCAGGACGGGAATCCTGTATCCTCCTTTTTCGAACTCGAAACAGCCCCGTGTTGAACTGCTTCCCT
 GTGGTATTATTCAGGGGAAACCAGGAGCCAAAGCTCAGCTCATCACTTTCCATCCTTCTTCAACAAAGG
 GGCCTTGTAGTGTGTGCTGGTCCACAGGCCAATCACCCACATACCTCTGTACTTTGTCAATGCTCAG
 TTTCCACGCTTTAGCCAGTACTTGGTCGAGCCAGGAGCCTCCAGCTGGAGGGGAGGCTCTATTATG
 AAGTGCCACTATTTACTGAGACATACCAACCTCTGCTCCTTGGGACCTCTTCCAGGACAATCATCTGC
 TCAACCCCACTCCCTCATTCCCACTTG

ACGCGTACGCGGCCGCTCGAG - GFP Tag - GTTTAA

Protein Sequence:

>MG208691 representing NM_153416
 Red=Cloning site Green=Tags(s)

MCSLGLFPPPPRQVTLYEHNELVTGNSYESPDPFRGQWINLPVLHLTKDPLKAPGRLDHGTRTAFI
 HHREQVWKRCINVWHDVGLFGVLNEIANSEEEVFEWKTACSWALALCGRASSLHGSLFPHLSLRSEDI
 AEFAQVTNWSSCLRVAWHPHTNKFVALLDDSIKVYANSTIVPSLKHRLQRNVAALAWKPLSASVLA
 VACQSCILIWTLDPSTLSTRPSSGCAQVLSHPGHTPVTSLAWAPNGGWLLSASPVDVAVILVWDVSTETCV
 PLPWFRRGGVTNLLWSPDGSKVLATTPSAVFRVWEAQMWTCWPTLSGRCQTGCWSPDGNRLFTVLGE
 ALIYSLSFPERCGTGKGVGGAKSATIVADLSETTIQTPDGEERLGGEAHSMVWDPSEGERLAVLMKGNPQ
 VQDGNPVILLFRTRNSPVFELLPCGIIQGEPGAQQLITFHPSFNKGALLSVCWSTGRITHIPLYFVNAQ
 FPRFSPVLGRAQEPPAGGGGSIHEVPLFTETSPSAPWDPLPGQSSAQPHSPHSHL

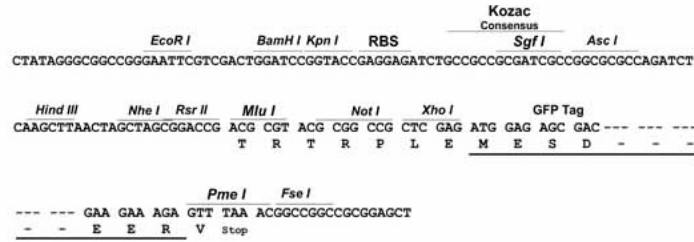
TRTRPLE - GFP Tag - V

Restriction Sites:

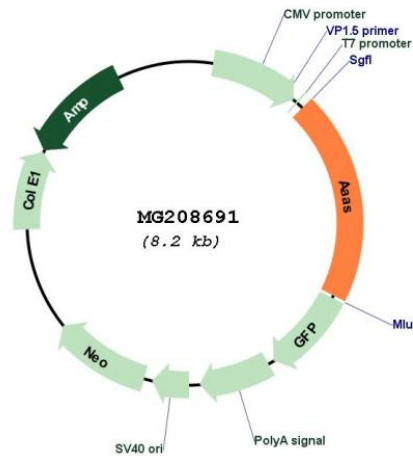
Sgfl-MluI

Cloning Scheme:

Cloning sites used for ORF Shutting:



Plasmid Map:



ACCN:	NM_153416
ORF Size:	1638 bp
OTI Disclaimer:	The molecular sequence of this clone aligns with the gene accession number as a point of reference only. However, individual transcript sequences of the same gene can differ through naturally occurring variations (e.g. polymorphisms), each with its own valid existence. This clone is substantially in agreement with the reference, but a complete review of all prevailing variants is recommended prior to use. More info
OTI Annotation:	This clone was engineered to express the complete ORF with an expression tag. Expression varies depending on the nature of the gene.
Components:	The ORF clone is ion-exchange column purified and shipped in a 2D barcoded Matrix tube containing 10ug of transfection-ready, dried plasmid DNA (reconstitute with 100 ul of water).
Reconstitution Method:	<ol style="list-style-type: none">1. Centrifuge at 5,000xg for 5min.2. Carefully open the tube and add 100ul of sterile water to dissolve the DNA.3. Close the tube and incubate for 10 minutes at room temperature.4. Briefly vortex the tube and then do a quick spin (less than 5000xg) to concentrate the liquid at the bottom.5. Store the suspended plasmid at -20°C. The DNA is stable for at least one year from date of shipping when stored at -20°C.
RefSeq:	NM_153416.1 , NP_700465.1
RefSeq Size:	1768 bp
RefSeq ORF:	1641 bp
Locus ID:	223921
UniProt ID:	P58742
Cytogenetics:	15 F3
Gene Summary:	Plays a role in the normal development of the peripheral and central nervous system. Required for the correct localization of aurora kinase AURKA and the microtubule minus end-binding protein NUMA1 as well as a subset of AURKA targets which ensures proper spindle formation and timely chromosome alignment.[UniProtKB/Swiss-Prot Function]