

Product datasheet for **MG208682**

Pde1a (BC090628) Mouse Tagged ORF Clone

Product data:

Product Type:	Expression Plasmids
Product Name:	Pde1a (BC090628) Mouse Tagged ORF Clone
Tag:	TurboGFP
Symbol:	Pde1a
Synonyms:	AI987702; AW125737
Mammalian Cell Selection:	Neomycin
Vector:	pCMV6-AC-GFP (PS100010)
E. coli Selection:	Ampicillin (100 ug/mL)



[View online »](#)

ORF Nucleotide Sequence:

>MG208682 representing BC090628
 Red=Cloning site Blue=ORF Green=Tags(s)

TTTTGTAATACGACTCACTATAGGGCGGCCGGAATTCGTCGACTGGATCCGGTACCGAGGAGATCTGCC
 GCC**CGGATCGCC**

ATGGGGTCTACTGATACGGACATCGAAGAATTGAAAAACGCCACTTACAAGTATCTCATTGGAGAACAGA
 CCGAGAAGATGTGGCAGCGCCTGAAGGGAATACTAAGATGCTTAGTGAAGCAGCTGGAGAAAAGGTGATGT
 CAACGTTGTTGACCTAAAGAAGAATATCGAATATGCAGCATCAGTACTGGAAGCTGTTTACATCGATGAG
 ACAAGAAGACTGCTGGACACAGAGGATGAAGTCAAGCAGCATCCAGACTGACTCCGTCCTCCGAAAGTCC
 GGGATTGGTTGGCTTCAACTTTACACGCAAAATGGGGATGATGAAAAAGAAGCCTGAAGAAAAACAAA
 GTTTCGCAGCATTGTCCATGCTGTCAGGCTGGGATTTTGTGGAAAGGATGTACAGGAAGAACTATCAC
 ATGGTTGGTTTGACATATCCTGCAGCTGCATAGTGACACTCAAGGAAGTTGATAAATGGTCTTTTGATG
 TATTTGCCTTAAATGAAGCAAGCGGGGAGCATAGCCTGAAGTTTATGATTTATGAACTCTTACCAGATA
 TGATCTTATCAACCGCTCAAGATTCCTGTTTCTGCCTAATTGCCTTTCGAGAAGCCTTAGAAGTTGGT
 TACAGCAAGCACAAAAATCCATATCATAATTTGGTCCATGCAGCTGACGCTCAACTCAAAGTGCATTATA
 TAATGCTTCATACAGGTATCATGCACTGGCTCACTGAACTGGAAATTTAGCCATGGTCTTTCGAGCTGC
 CATTATGATTATGAGCACACAGGAACAACAACAACTTCCATATTCAGACGAGGTCCGACGTTGCTATT
 CTGTACAACGACCGCTCAGTGTGAGAATCACCACGTCAGCGCAGCCTACAGACTTATGCAAGAGGAGG
 AAATGAATATTTGGTAAATTTGTCTAAAGATGACTGGAGGGATCTTCGGAAGTATGATTGAAATGGT
 CTTAGCGACAGACATGTCAGGGCATTTCAGCAAAATAAAAACATAAGAAACAGCTTGCAGCAGCCGGAA
 GGGATTGACAGAGCCAAAACATGTCCTGATACTCCATGCAGCTGACATCAGCCACCCAGCCAAAACCT
 GGAAGTTGCACTACAGATGGACCATGGCCCTAATGGAGGAGTTTTCTGCAGGGAGACAAGAAGCTGA
 ATTAGGGCTTCCATTTTCTCACTTTGTGATCGGAAGTCAACAATGGTTGCCAGTCGCAATAGGTTTC
 ATTGATTTCATAGTGGAGCCAACGTTTTCTCTCTGACGACTCAACAGAGAAAATTGTCATTCCTCTTA
 TAGAGGAAGCTTCAAAGTACAGTCTTCAAACACGGGGCAAGCAGCTCGTCCACCATGATTGGTTCCA
 TGTTGCTGACTCTGAGGCGGTCAAATACAAAAGGCTCCGTGTGTGATGGGAGCTATGCCCCAGACTAC
 TCGCTCTCAGCTGTGGATCTGAAGAGTTTCAAAAACAACCTGGTGGACATCATTACAGCAGAAACAAGAGA
 GGTGAAAAGAGTTGGCTGCCAAGGTGAAGTCTTTCATAAGAAGTTCAGAAGAGTTAGGAAACTACTGA
 AGAAAAGCATGCTGACACAGTCCA

ACGCGTACGCGGCCGCTCGAG - GFP Tag - GTTTAA

Protein Sequence:

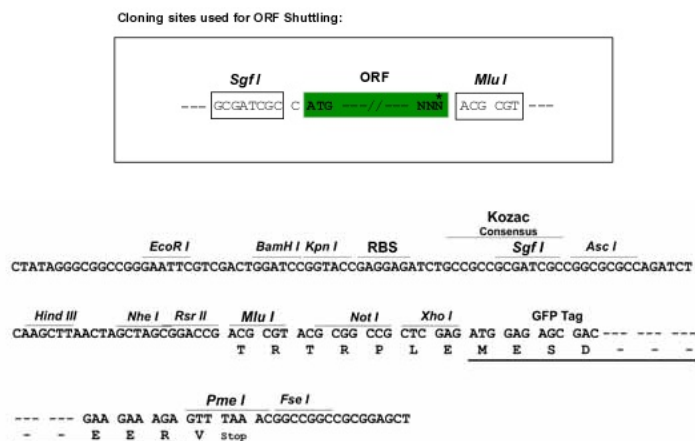
>MG208682 representing BC090628
 Red=Cloning site Green=Tags(s)

MGSTDTDIEELENATYKYLIGEQTAKMWQRKLGILRCLVKQLEKGDVNVVDLKKNIEYAASVLEAVYIDE
 TRRLDTEDELSDIQTDSVPSEVRDWLASTFTRKMGMMKKKPEEKPKFRSIVHAVQAGIFVERMYRKNYH
 MVGLTYPAAVIVTLKEVDKWSFDVFNALNEASGEHSLKFMIEYELFTRYDLINRFKIPVSCLIAFAEALV
 YSKHKPNYPHNLVHAADVTQTVHYIMLHTGIMHWLLEILAMVFAAAIHDYEHTGTTNNFHIQTRSDVAI
 LYNDRSVLENHHVSAAYRLMQEEEMNILVNL SKDDWRDLRNLVIEMVLATDMSGHFQQIKNIRNSLQOPE
 GIDRAKTMSELILHAADISHPAKTWKLHYRWTMALMEEFFLQGDKEAELGLPFSPLCDRKSTMVAQSQIGF
 IDFIVEPTFSLLDSTEKIVIPLEIEEASKSQSSNYGASSSSTMIGFHVADSLRRSNTKGSVCDGYSYAPDY
 SL SAVDLKSFKNLVDIIQONKERWKELAAQGEGLDLHKNSEELGNTEEKHADTRP

TRTRPLE - GFP Tag - V

Restriction Sites:

Sgfl-MluI

Cloning Scheme:


ACCN: BC090628

ORF Size: 1635 bp

OTI Disclaimer: The molecular sequence of this clone aligns with the gene accession number as a point of reference only. However, individual transcript sequences of the same gene can differ through naturally occurring variations (e.g. polymorphisms), each with its own valid existence. This clone is substantially in agreement with the reference, but a complete review of all prevailing variants is recommended prior to use. [More info](#)

OTI Annotation: This clone was engineered to express the complete ORF with an expression tag. Expression varies depending on the nature of the gene.

Components: The ORF clone is ion-exchange column purified and shipped in a 2D barcoded Matrix tube containing 10ug of transfection-ready, dried plasmid DNA (reconstitute with 100 ul of water).

Reconstitution Method:

1. Centrifuge at 5,000xg for 5min.
2. Carefully open the tube and add 100ul of sterile water to dissolve the DNA.
3. Close the tube and incubate for 10 minutes at room temperature.
4. Briefly vortex the tube and then do a quick spin (less than 5000xg) to concentrate the liquid at the bottom.
5. Store the suspended plasmid at -20°C. The DNA is stable for at least one year from date of shipping when stored at -20°C.

RefSeq: [BC090628](#), [AAH90628](#)

RefSeq Size: 4255 bp

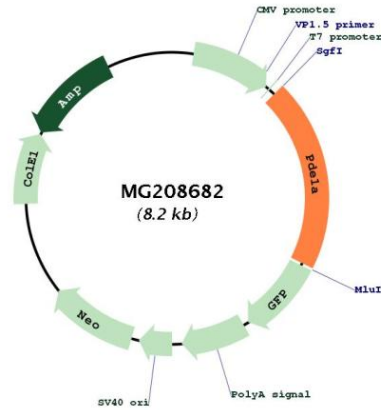
RefSeq ORF: 1637 bp

Locus ID: 18573

Cytogenetics: 2 C3

Gene Summary:

Cyclic nucleotide phosphodiesterase with a dual-specificity for the second messengers cAMP and cGMP, which are key regulators of many important physiological processes. Has a higher affinity for cGMP than for cAMP (By similarity).[UniProtKB/Swiss-Prot Function]

Product images:

Circular map for MG208682