

## Product datasheet for **MG208675**

### Gns (NM\_029364) Mouse Tagged ORF Clone

#### Product data:

Product Type:	Expression Plasmids
Product Name:	Gns (NM_029364) Mouse Tagged ORF Clone
Tag:	TurboGFP
Symbol:	Gns
Synonyms:	2610016K11Rik; AU042285; C87209; G6S; N28088
Mammalian Cell Selection:	Neomycin
Vector:	pCMV6-AC-GFP (PS100010)
E. coli Selection:	Ampicillin (100 ug/mL)



[View online »](#)

**ORF Nucleotide Sequence:**

>MG208675 representing NM\_029364  
 Red=Cloning site Blue=ORF Green=Tags(s)

TTTTGTAATACGACTCACTATAGGGCGGCCGGAATTCGTCGACTGGATCCGGTACCGAGGAGATCTGCC  
 GCC**CGGATCGCC**

ATGCGGCTCCCTTCGGCAGCCGGCCCCGGCCGGCCGTCGCCCGCCCTGCCGGCGCTGCTGCTGCTGC  
 CGCTGCTGGGAGGCTGCCTGGGGCTCGTGGGGCGGCTCGCAGGCCCAAGTGCTGCTGCTCACCGA  
 CGACCAGGACGCGGAGCTCGGCGCATGACGCCACTGAAGAAAACCAAGCCCTCATCGGAGAGAAGGGG  
 ATGACTTTCTCTAGCGCCTATGTGCCAGTGCTCTTTGCTGCCCCAGCAGAGCCAGCATCCTGACTGGAA  
 AGTACCCCAACAACCACCGTCTTAACAACACTTTGGAAGGGAAGTGCAGTAGCAAGGCTGGCAGAA  
 GATCCAGGAGCCGTACACCTCCCGCCATCCTCAAGTCGGTGTGCGGCTATCAGACCTTTTTGCTGGG  
 AAGTATTTAAACGAGTATGGAGCCCCAGACGAGCGGACTGGAGCACATCCCCCTGGGCTGGAGTTACT  
 GGTATGCCCTGGAAAAGAATTCTAAATACTATAACTACACCTCTCCATCAACGGGAAGGCACGGAAGCA  
 CGCGGAGAACTACAGCGTGGACTACCTGACAGATGTTCTGGCCAACTCTCCCTGGACTTCTGGACTAC  
 AAGTCCAACCTCTGAGCCATTCTCATGATGATCTCCACTCCAGCGCCCACTCACCGTGGACGGCTGCTC  
 CGCAGTACCAGAAGGCTTTCAGAATGTATCGCACCAAGAAAACAAGAATTCAACATCCACGGGACGAA  
 CAAGCACTGGCTAATCAGGCAAGCAAGACTCCCATGACGAACTCGTCAATACGGTTCTTAGATGACGCC  
 TTCAGGAGGAGGTGGCAAACCTGCTCTCAGTTGACGACCTTGTGGAGAACTGGTGAAGAGACTGGACT  
 CGACCGGAGAGCTGGACAACACGTATATCTTCTATACCTCAGACAACGGCTACCACACAGGGCAGTTCTC  
 TTTGCCAATAGACAAACGGCAGCTGTATGAGTTTGATATCAAAGTCCACTGTTGGTTTCGAGGGCCCGGC  
 ATCAAACCAACCAGACCAGCAAGATGCTGGTCTCAAACATCGACTTGGTCCCACCATCCTGGACTCG  
 CTGGCTATGACCTGAACAAGACACAGATGGATGGGATGTCCTGCTGCCATTCTGAAAGGAGACGAAA  
 CTTAACCTGGAGTCCAGACGTGCTGGTGAATATCAAGGAGAAGGCCGGAATGTACCCGACCCGACCTGC  
 CCTTTCTTGAGTCTGGAGTGTCTCAATGTTTCCCGACTGTGTGTGTAAGACGCGTACAACAATACCT  
 ACGCCTGCGTGGGACACTGTCATCATTGTGGAACCTCCAGTACTGCGAGTTCGACGACCAGGAGGTATT  
 TGTGCAAGTCTACAATACACTGCAGATCCAGACCAGATCACCAACATTGCCAAGAGTATAGACCTGAG  
 CTTTTGGAAAGATGAATATCGTCTGATGCTGCAGTCTGTTCTGGGCCGACTGTCGCACTCCAG  
 GGGTCTTTGACCCTGGGTACAGTTTGACCTGCGTCTCATGTTCAACAGTACGGCAGCGTCAGAACGAG  
 AAGTTCTCGAAGCATCCGCTC

AGCGGACCGACGCGTACGCGGCCGCTCGAG - GFP Tag - GTTTAA

**Protein Sequence:**

>MG208675 representing NM\_029364  
 Red=Cloning site Green=Tags(s)

MRLPSAAGPRPGRPRRLPALLLLPLLGCLGLVGAARRPNVLLLLTDDQDAELGGMTPLKTKALIGEKG  
 MTFSSAYVPSALCCPSRASILTGYPHNHVNNNTLEGNCSKAWQKIQEPYTFPAILKSVCGYQTF FAG  
 KYLNEYGAPDAGGLEHIPLGWSYWYALEKNSKYNYTLSINGKARKHGENYSVDYLTVDLANLSLDFLDY  
 KSNSEPFMMISTPAPHSPWTAAPQYQKAFQNVIAPRNKNFNIHGTNKHWRIRQAKTPMTNSSIRFLDDA  
 FRRRWQTLVSVDDLVEKLVKRLDSTGELDNTYIFYTSDNGYHTGQFSLPIDKRQLYEFDIKVPLLV RGP  
 IKPNQTSKMLVSNIDLGPITLDLAGYDLNKTQMDGMSLLPILKGDRNL TWRSDVLEVEYQGEGRNVDPTC  
 PSLSPGVSQCFPDCVEDAYNNTYACVRTLSSLWNLQYCEFDQEVFVEVYNITADPDQITNIAKSIDPE  
 LLGKMNYRLMMLQSCSGPTCRTPGVFDPGYRFDLRLMFNSHGSVRTRRF SKHPL

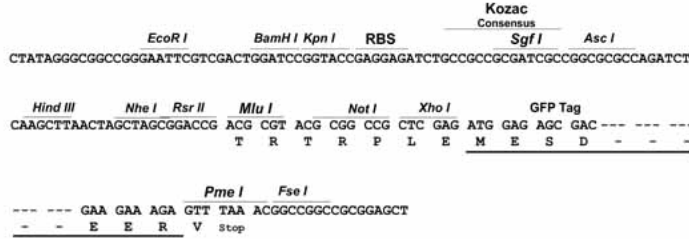
SGPTRRRLE - GFP Tag - V

**Restriction Sites:**

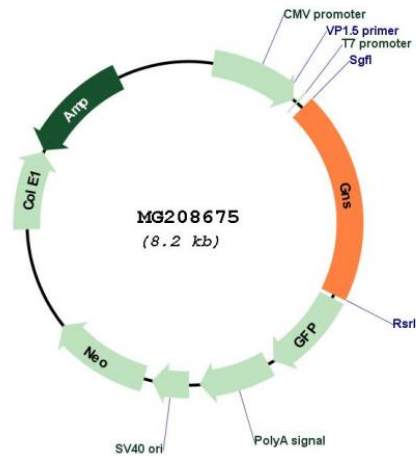
Sgfl-RsrII

Cloning Scheme:

Cloning sites used for ORF Shuttling:



Plasmid Map:



<b>ACCN:</b>	NM_029364
<b>ORF Size:</b>	1632 bp
<b>OTI Disclaimer:</b>	The molecular sequence of this clone aligns with the gene accession number as a point of reference only. However, individual transcript sequences of the same gene can differ through naturally occurring variations (e.g. polymorphisms), each with its own valid existence. This clone is substantially in agreement with the reference, but a complete review of all prevailing variants is recommended prior to use. <a href="#">More info</a>
<b>OTI Annotation:</b>	This clone was engineered to express the complete ORF with an expression tag. Expression varies depending on the nature of the gene.
<b>Components:</b>	The ORF clone is ion-exchange column purified and shipped in a 2D barcoded Matrix tube containing 10ug of transfection-ready, dried plasmid DNA (reconstitute with 100 ul of water).
<b>Reconstitution Method:</b>	<ol style="list-style-type: none"><li>1. Centrifuge at 5,000xg for 5min.</li><li>2. Carefully open the tube and add 100ul of sterile water to dissolve the DNA.</li><li>3. Close the tube and incubate for 10 minutes at room temperature.</li><li>4. Briefly vortex the tube and then do a quick spin (less than 5000xg) to concentrate the liquid at the bottom.</li><li>5. Store the suspended plasmid at -20°C. The DNA is stable for at least one year from date of shipping when stored at -20°C.</li></ol>
<b>RefSeq:</b>	<a href="#">NM_029364.4</a>
<b>RefSeq Size:</b>	3855 bp
<b>RefSeq ORF:</b>	1635 bp
<b>Locus ID:</b>	75612
<b>UniProt ID:</b>	<a href="#">Q8BFR4</a>
<b>Cytogenetics:</b>	10 D2