

Product datasheet for **MG208659**

Prpf38b (NM_025845) Mouse Tagged ORF Clone

Product data:

| | |
|---------------------------|--|
| Product Type: | Expression Plasmids |
| Product Name: | Prpf38b (NM_025845) Mouse Tagged ORF Clone |
| Tag: | TurboGFP |
| Symbol: | Prpf38b |
| Synonyms: | 1110021E09Rik; AU018955 |
| Mammalian Cell Selection: | Neomycin |
| Vector: | pCMV6-AC-GFP (PS100010) |
| E. coli Selection: | Ampicillin (100 ug/mL) |



[View online »](#)

ORF Nucleotide Sequence:

>MG208659 representing NM_025845
 Red=Cloning site Blue=ORF Green=Tags(s)

TTTTGTAATACGACTCACTATAGGGCGGCCGGGAATTCGTCGACTGGATCCGGTACCGAGGAGATCTGCC
 GCC**CGGATCGCC**

ATGGCCAACAACAGCCCCGCGCTGACCGGCAACTCGAACCGCAGCACCAGGCGGCCGGCCGTGACCC
 AGCAGCAGCAGCAATGTGGCGGCCGGCGGCCACCAAGCCGCGGTTGTCGGGAAGCAGGGCAATGT
 GCTGCCGCTGTGGGGCAACGAGAAGACCATGAACCTCAACCCCATGATCCTCACCAACATCCTGTCGTCG
 CCTTACTTCAAAGTGACGCTCTACGAGCTCAAGACCTACCACGAGGTGGTGGACGAGATCTACTTTAAGG
 TCACGCATGTTGAGCCATGGGAAAAGGGGAGTAGGAAAAGTCTGGCCAGACGGGGATGTGCGGAGGGGT
 TCGAGGTGTTGGAACAGGAGGCATTGTTTCTACAGCATTTTGCCTTCTATACAAATTATTTACCCTGAAG
 TTAAGTCAAAGCAAGTATGAGGTTCTATAACACATACAGACTCTCCATATATCAGAGCCCTGGATTTA
 TGTATATAAGGTATACCAACCCCTACAGACCTGTGGGACTGGTTTGTGTCCTTCTTGTATGATGAGGA
 GGACCTAGATGTCAAAGCTGGTGGAGGCTGTGTAATGACCATTGGAGAGATGCTTCGTTCTTTTCTCACA
 AACTGGAATGGTTTTCTACTTTGTTTCCAAGAATTCAGTTCAGTCCAGAAGAACATTGATCAGCAGA
 TAAAACTCGACCTAGGAAAATCAAGAAAGACGAAAGGAAGGCATTGAGGAGATAGACAGACATGTTGA
 GAGACGGCGATCCAGATCTCAAGAAGATCACTGAGCCCACGGAGGTCTCAAGAAGATCAAGAAGCAGA
 AGTCATCACCGGGAGGGCCATGGATCTTCTAGTTTTGACAGAGAATTAGAGAGAGAGAAAGAAGCCAAAC
 GACTAGAGCGGGAAGCCAAAGAGAGAGAGAAAGAAAGGCGAAGATCCCGAAGCATTGATCGGGGCTTAGA
 TCGCAGGCGAAGCCGAGTCCGGGAGAGGACAGAAAGTCCGAGTCGAGTCGTGATAGGAAAGGGGATAGA
 AGAGACAGGGATCGGGAAGAGAGAAAGAAAATGAGAGGGGTGGAAGACGAGACCGAGATTATGACAAGG
 AGAGAGCGAGTACCCGAGAAAGGACAGAGAGAGATCAAGAGAGCGCTCCAAGGAGCAGAGAAAGTAGGGG
 TGATGGAGAAGAGAAGAAGCACAAGAAGACAAGGAGGACAGACGACACAGAGATGACAAAAAAGAGTCC
 AAGAAAAAACACAGCAGAACGAGGAGCAGAGAGAGGAAACACAGGAGCAGGAGCAGAAACGAGGGAAGC
 GGAGCAGGAGCAGGAGCAAGGACAAGTCAAGCAGACATAAAAAACGAAAGCAAGGAGAAGGCAAATAAAAG
 AAGCAGAAGTGGCAGTCAAGGAAGAACTGGCAGTGTGAAAAGAGAAAACGAGAACACAGCCCTAGCAGA
 GAGAAGTCTAGAAAGCGCAGCAGGAGCCAAAGACCGTCCCAAGAGAGAGCATAATGATAGCAAGGACC
 AGTCAGACAGACAGGATCATCAGAGCAGCCAGAGTGGAGAGCCAGAGAGCCAAGAAAAGGAACACAAAAG
 CAAAGATGAGACTGTG

ACGCGTACGCGGCCGCTCGAG – GFP Tag – GTTTAA

Protein Sequence:

>MG208659 representing NM_025845
 Red=Cloning site Green=Tags(s)

MANNSPALTGNSQPQHAAAAAVTQQQQCGGGGATKPAVSGKQGNVPLWGNEKTMNLPNPMILTNILSS
 PYFKVQLYELKTYHEVVDIYFKVTHVEPWEKGRKTAGQTMCGGVVGVGTGGIVSTAFCLLYKLFLLK
 LTRKQVMGLITHDSPYIRALGFMYIRYTPPTDLWDFESFLDDEEDLDVKAGGCVMTIGEMLSFLT
 KLEWFSTLFPRIIPVPVQKNIDQQIKTRPRKIKKDGKEGIEEIDRHVERRRSRSPRRSLSPRRSPRRSR
 SHHREGHGSSFDRELEREKERQLEREAKEREKERRRSRSDRGLDRRRSRSRERHRSRSDRDRKDR
 RDRDREREKENERRRDRDYDKERGSDRERDRERSRERSKEQRSRGDGEKKHKEDKEDRRHRDDKES
 KKKHSRERSRERKHSRERSNAGKRSRSDKSSRHKNESKEKANKRSRSGSQGRTGSVEKRKREHSPSR
 EKSRRKRSRSDRSHKREHNSKDQSDRQDHQSSQSGEPESQEKHKSKDETV

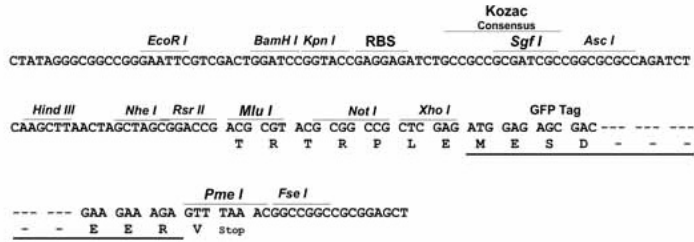
TRTRPLE – GFP Tag – V

Restriction Sites:

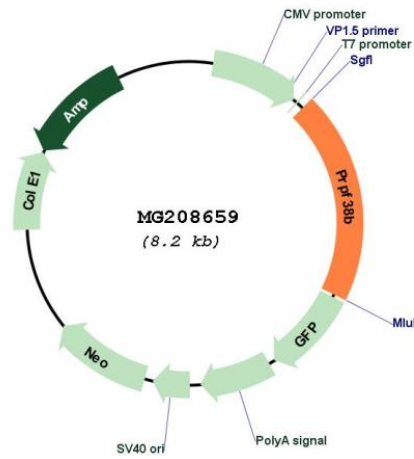
Sgfl-MluI

Cloning Scheme:

Cloning sites used for ORF Shutting:



Plasmid Map:



| | |
|-------------------------------|---|
| ACCN: | NM_025845 |
| ORF Size: | 1626 bp |
| OTI Disclaimer: | The molecular sequence of this clone aligns with the gene accession number as a point of reference only. However, individual transcript sequences of the same gene can differ through naturally occurring variations (e.g. polymorphisms), each with its own valid existence. This clone is substantially in agreement with the reference, but a complete review of all prevailing variants is recommended prior to use. More info |
| OTI Annotation: | This clone was engineered to express the complete ORF with an expression tag. Expression varies depending on the nature of the gene. |
| Components: | The ORF clone is ion-exchange column purified and shipped in a 2D barcoded Matrix tube containing 10ug of transfection-ready, dried plasmid DNA (reconstitute with 100 ul of water). |
| Reconstitution Method: | <ol style="list-style-type: none">1. Centrifuge at 5,000xg for 5min.2. Carefully open the tube and add 100ul of sterile water to dissolve the DNA.3. Close the tube and incubate for 10 minutes at room temperature.4. Briefly vortex the tube and then do a quick spin (less than 5000xg) to concentrate the liquid at the bottom.5. Store the suspended plasmid at -20°C. The DNA is stable for at least one year from date of shipping when stored at -20°C. |
| RefSeq: | NM_025845.3 |
| RefSeq Size: | 3003 bp |
| RefSeq ORF: | 1629 bp |
| Locus ID: | 66921 |
| UniProt ID: | Q80SY5 |
| Cytogenetics: | 3 F3 |
| Gene Summary: | May be required for pre-mRNA splicing.[UniProtKB/Swiss-Prot Function] |