

## Product datasheet for **MG208655**

### **Ppm1g (NM\_008014) Mouse Tagged ORF Clone**

#### **Product data:**

|                           |  |
|---------------------------|--|
| Product Type:             | Expression Plasmids                      |
| Product Name:             | Ppm1g (NM_008014) Mouse Tagged ORF Clone |
| Tag:                      | TurboGFP                                 |
| Symbol:                   | Ppm1g                                    |
| Synonyms:                 | A1385652; Fin13                          |
| Mammalian Cell Selection: | Neomycin                                 |
| Vector:                   | pCMV6-AC-GFP (PS100010)                  |
| E. coli Selection:        | Ampicillin (100 ug/mL)                   |



[View online »](#)

**ORF Nucleotide Sequence:**

>MG208655 representing NM\_008014  
 Red=Cloning site Blue=ORF Green=Tags(s)

TTTTGTAATACGACTCACTATAGGGCGGCCGGGAATTCGTCGACTGGATCCGGTACCGAGGAGATCTGCC  
 GCC**CGCATCGCC**

ATGGGTGCCTACCTCTCTCAGCCCAACACGGTGAAGTGCTCCGGGACGGGGTTGGCGCCCCGGGCTCC  
 CGCTGCCCTACGGCTTCTCCGCCATGCAAGGCTGGCGCGTCTCCATGGAGGATGCTCACAACGTATTCC  
 TGAGCTGGACAATGAGACAGCCATGTTTTCTGTCTACGATGGACATGGAGGGGAAGAGGTTGCCTGTAC  
 TGTGCCAAATATCTTCTGATATTATCAAAGATCAGAAGGCCATAAGGAAGCAAGCTTCAAGAGGCTT  
 TACAAGATGCCTTCTTGCTATTGATGCCAAGCTGACCACAGAGGAAGTCATTAAGGAAGTGGCCAGAT  
 TGCAGGGAGACCCACTGAAGATGAGGATGATAAAGACAAAGTAGCAGATGAGGATGATGTGGACAATGAG  
 GAGGCTGCATTGTGCATGAAGAGGCTACCATGACTATTGAAGAGCTGCTGACCGGATATGGGCAGAACT  
 GTCAGAAGGTCCCTCCCCACACCAAACTGGAATTGGGACAGGCATGAACCGGGCCCCAGGGCCTCAA  
 TGGGGAGGCTGGACCTGAGGACCATCTAGGGAACTCCTTCCCAGGAAAATGGCCCCACAGCCAAAGGC  
 CACACAGGCTTTTCTCCAACCTCGAACATGGGACTGAGGCAGGCCAAATTAAGTAGCCCGTACTGCTA  
 CCGGTGAGGCTGGACCTTCTGCTCTTACGCTCTGACAAGCTGCCTCGAGTTGCTAAGTCCAAGTCTT  
 TGAGGACAGTGAAGATGAATCAGATGAGGTGGAGGAAGAGGAGGATGACAGTGAAGGATGTAGTGAAGGAC  
 GAGGACGGCTACAGCAGTGAAGGACGAGAGAACGAGGAAGACGAGGATGACACGGAGGAGGCTGAAGAGG  
 ATGATGATGAAGAGATGATGGTCCCTGGAATGGAAGGCAAGAAGAGCCTGGTTCTGACAGTGGCACAAC  
 AGCGGTGGTGGCTCTGATCAGAGGAAGCAGTTGATTGTGGCCAATGCAGGAGACTCTCGCTGTGTGGTG  
 TCCGAGGCTGGCAAAGCTTTAGATATGTCCTATGACCACAAACCAGAGGATGAAGTGGAGCTGGCAGCA  
 TCAAGAATGCTGGTGGCAAGTCAACATGGATGGACGAGTCAATGGAGGCCTCAACCTCTCCAGGGCCAT  
 TGGAGACCACTTCTACAAGAGAAACAAAAACTTGCCACCCAGGAACAGATGATTTCTGCCCTTCTCGAC  
 ATCAAGGTGCTGACTCTCACTGATGACCATGAATTCATGGTCATTGCTTGTGACGGCATCTGGAATGTGA  
 TGAGCAGCCAGGAGGTTGTAGACTTTATTCAATCAAAGATCAGTCAACGTGATGAAAACGGGAGCTTCG  
 GTTATTGTATCCATTGTGAAGAGCTGCTGGATCAGTGCCTGGCGCCAGACTTCTGGGGATGGTACA  
 GGGTGTGACAACATGACGTGCATCATCTTTGCTTCAAGCCCCGAAACACAGTAGAGCTTCAAGCAGAGA  
 GTGGCAAGAGGAACTGGAGGAGGCACTGTCCACGGAGGGGGCTGAAGACACCGGCAACAGTGACAAAAA  
 GAAGGCCAAGAGGGAC

**ACGCGTACGCGGCCGCTCGAG - GFP Tag - GTTTAA**

**Protein Sequence:**

>MG208655 representing NM\_008014  
 Red=Cloning site Green=Tags(s)

MGAYLSQPNTVKCSGDGVPRLPLPYGFSAMQGWVSMEDAHNCIPELDNETAMFVSYDGHGGEEVALY  
 CAKYLPDIKDKQKAYKEGKLQKALQDAFLAIDAKLTTEEVIKELAQIAGRPTEDDDKDKVADEDDVDNE  
 EAALLHEEATMTIEELLTRYGQNCQKVPHTKSGIGTGDEPGPQGLNAGEAGPEDPSRETPSQENGP  
 TAKGHTGFSSNSEHGTEAGQISEPGTATGEAGPSCSSASDKLPRVAKSKFFEDSEDESDEVEEEDDSEECSED  
 EDGYSSEEAENEDEDDTEEAEEEDDDEEMVPGMEGKEEPGSDSGTTAVVALIRGKQLIVANAGDSRCVV  
 SEAGKALDMSYDHPPEDEVELARIKNAGGKVTMDGRVNGGLNLSRAIGDHFYKRKNLPPQEQMISALPD  
 IKVLTLDHDFMVIACDGIWNVMSQEVVDFIQSKISQRDENGELRLLSSIVEELLDQCLAPDTS  
 GDTGCDNMTCIIICFKPRNTVELQAESGKRKLEELSTEGAEDTGNSDKKKAKRD

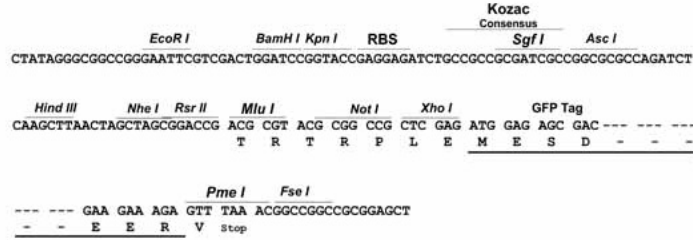
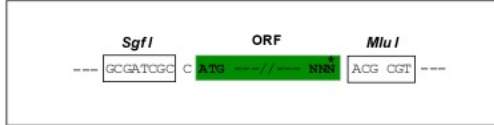
**TRTRPLE - GFP Tag - V**

**Restriction Sites:**

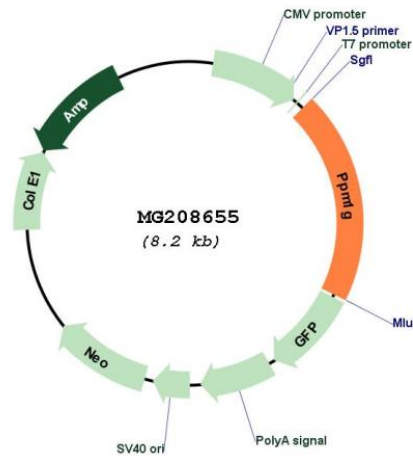
Sgfl-Mlul

Cloning Scheme:

Cloning sites used for ORF Shutting:



Plasmid Map:



|                               |   |
|-------------------------------|---|
| <b>ACCN:</b>                  | NM_008014   |
| <b>ORF Size:</b>              | 1626 bp   |
| <b>OTI Disclaimer:</b>        | The molecular sequence of this clone aligns with the gene accession number as a point of reference only. However, individual transcript sequences of the same gene can differ through naturally occurring variations (e.g. polymorphisms), each with its own valid existence. This clone is substantially in agreement with the reference, but a complete review of all prevailing variants is recommended prior to use. <a href="#">More info</a>  |
| <b>OTI Annotation:</b>        | This clone was engineered to express the complete ORF with an expression tag. Expression varies depending on the nature of the gene.  |
| <b>Components:</b>            | The ORF clone is ion-exchange column purified and shipped in a 2D barcoded Matrix tube containing 10ug of transfection-ready, dried plasmid DNA (reconstitute with 100 ul of water).  |
| <b>Reconstitution Method:</b> | <ol style="list-style-type: none"><li>1. Centrifuge at 5,000xg for 5min.</li><li>2. Carefully open the tube and add 100ul of sterile water to dissolve the DNA.</li><li>3. Close the tube and incubate for 10 minutes at room temperature.</li><li>4. Briefly vortex the tube and then do a quick spin (less than 5000xg) to concentrate the liquid at the bottom.</li><li>5. Store the suspended plasmid at -20°C. The DNA is stable for at least one year from date of shipping when stored at -20°C.</li></ol> |
| <b>RefSeq:</b>                | <a href="#">NM_008014.3</a> , <a href="#">NP_032040.1</a>   |
| <b>RefSeq Size:</b>           | 2165 bp   |
| <b>RefSeq ORF:</b>            | 1629 bp   |
| <b>Locus ID:</b>              | 14208   |
| <b>UniProt ID:</b>            | <a href="#">Q61074</a>  |
| <b>Cytogenetics:</b>          | 5 17.27 cM  |
| <b>Gene Summary:</b>          | May be involved in regulation of cell cycle.[UniProtKB/Swiss-Prot Function]   |