

Product datasheet for **MG208646**

Enah (BC062927) Mouse Tagged ORF Clone

Product data:

Product Type:	Expression Plasmids
Product Name:	Enah (BC062927) Mouse Tagged ORF Clone
Tag:	TurboGFP
Symbol:	Enah
Synonyms:	Mena, WBP8
Mammalian Cell Selection:	Neomycin
Vector:	pCMV6-AC-GFP (PS100010)
E. coli Selection:	Ampicillin (100 ug/mL)



[View online »](#)

ORF Nucleotide Sequence:

>MG208646 representing BC062927
 Red=Cloning site Blue=ORF Green=Tags(s)

TTTTGTAATACGACTCACTATAGGGCGGCCGGAATTCGTCGACTGGATCCGGTACCGAGGAGATCTGCC
 GCC**CGGATCGCC**

ATGAGTGAACAGAGTATCTGTCAAGCAAGAGCTGCTGTGATGGTCTATGATGATGCCAATAAGAAGTGGG
 TGCCAGCTGGTGGCTCAACTGGGTTCAAGCAGAGTACATATATATACCCATACAGGCAACAACACATTTCAG
 AGTTGTGGGCAGAAAGATTCAAGACCATCAGGTTGTGATAAACTGTGCCATTCTAAAGGCTGAAGTAC
 AATCAAGCTACACAGACTTTCCACCAATGGAGGGATGCTAGACAGGTGTATGGTCTCAACTTTGGCAGCA
 AAGAGGATGCCAATGTCTTCGCAAGTGCCATGATGCATGCCTTAGAAGTGTAAATTCACAGGAAGCAGG
 GCCAACATTGCCTAGACAAAATTCACAGCTACCTGCTCAAGTTCAAAATGGCCCATCCAAGAAGAGCTG
 GAAATCCAGAGAAGGCAACTGCAAGAACAGCAGCGACAGAAGGAAGTGGAGAGGGAAAGAATGGAGAGGG
 AAAGTTGGAGAGAGAAGCAGTACAAGCAGAGAGGCTAGAGAGGGAGCGCCTGGAACAAGAGCAGCTGGA
 GCGGCAGCGGCAGAAAGGGAGCAGTGGAGCGGCTGGAGAGGGAGAGGCTGGAGCGCCTGGAGCGAGAG
 AGGCAGGAGCGGGAGCGAGAGCGCCTGGAGCAGCTGGAGCGGGAGCAAGTGGAGTGGGAGCGAGAGCGCA
 GAATGTCCAATGCTGCTGCCCTGCCTCTGCGGAGACCCCTCTAAATCCTGAGCTGGGAGACTCCTCTGC
 TTCGAGCCAGGCTTGCAGGCAGCCTCTCAGCCGGCCGAGTCGCCAACCCACAGGGCCTTGTCTTGGGA
 CCACCTGCACCTCCGCCACCACCCCTCTCCCATCAGGCCTGCCTACGCCTCAGCACTTCTCCTCCCC
 CAGGACCCCTCCACCACCTCCACTGCCATCCACTGGTCTCTCCTCCACCCCTCCACCACCCCTCT
 TCCTAATCAAGCTCCTCCCCCTCTCCCCACCTCCTGCCCTCCCCTCCCGCATCTGGAATTTTCTCT
 GGATCCACGTGAGAAGACAATCGCCCTTAAGTGGACTGCAGCTGCAATTGCGGGAGCAAAACTTAGGA
 AAGTGTCCCGGGTGGAGGATGGCTCTTTCCAGTGGAGGGAATACTGGGAGTGTGAGCTTGGCCTCATC
 CAAAGCAGACGCTGGGCGTGGGAATGGACTCTCCTCTAGGGGTAGTGGCTAATGGAAGAAATGAGT
 GCCCTGTGCGCCAGGAGGAGAAGATTGCTGAGAAGGGATCAACAATAGAAACAGAAACAAAAGGAAGACA
 GAAATGAAGATGCAGAGCCTATAACTGCTAAGGCCCATCAACAAGTACACCTGAACCAACCAGAAAACC
 TTGGGAAAGAACAACAATGAACGGCAGTAAGTACCTGTCTCCAGACCCAAATCCACACCTTCA
 TCACAGCCAAGTGCCAATGGAGTCCAGACAGAAGGCTTACTATGACAGGCTGAAGCAGGACATTTAG
 ATGAGATGAGAAAAGAGCTGGCAAAGCTGAAGGAGGAGCTATTGACGCAATCAGGCAGGAGCTGAGCAA
 GTCGAACACTGCA

ACGCGTACGCGGCCGCTCGAG - GFP Tag - GTTTAA

Protein Sequence:

>MG208646 representing BC062927
 Red=Cloning site Green=Tags(s)

MSEQSIQARAAMVYDDANKKWPAGGSTGFSRVHIYHHTGNNTFRVVGRIQDHQVVINCAIPKGLKY
 NQATQTFHQWRDARQVYGLNFGSKEDANVFASAMMHALEVLNSQEAGPTLPRQNSQLPAQVQNGPSQEEL
 EIQRRLQEQQRQKELERERMERERLERERLERERLEQEQLERQREHVERLERERLERERE
 RQERERERLEQLEREQVEWERERRMSNAAPASAEPLNPELGDSSASEPGLQAASQPAESPTPQGLVLG
 PPAPPPPPPLPSGPAYASALPPPPGPPPPPLPSTGPPPPPPPPPLPNQAPPPPPPPAPPLPASGIFS
 GSTSEDNRPLTGLAAAIAGAKLRKVSERVEDGSFPGGNTGSVSLASSKADAGRGNGPLPLGGSGLMEEMS
 ALLARRRRIAEKGSTIETEQRNEDAEPITAKAPSTSTPEPTRKPWERTNTMNGSKSPVISRPKSTPS
 SQPSANGVQTEGLDYDLKQDILDEMRKELAKLKEELIDAIRQELSKSNTA

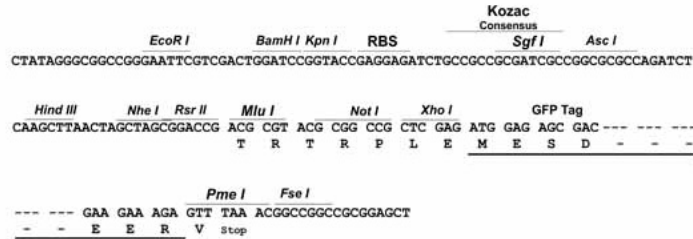
TRTRPLE - GFP Tag - V

Restriction Sites:

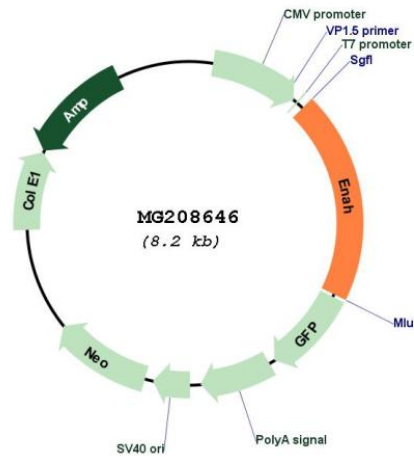
Sgfl-MluI

Cloning Scheme:

Cloning sites used for ORF Shutting:



Plasmid Map:



ACCN:	BC062927
ORF Size:	1625 bp
OTI Disclaimer:	The molecular sequence of this clone aligns with the gene accession number as a point of reference only. However, individual transcript sequences of the same gene can differ through naturally occurring variations (e.g. polymorphisms), each with its own valid existence. This clone is substantially in agreement with the reference, but a complete review of all prevailing variants is recommended prior to use. More info
OTI Annotation:	This clone was engineered to express the complete ORF with an expression tag. Expression varies depending on the nature of the gene.
Components:	The ORF clone is ion-exchange column purified and shipped in a 2D barcoded Matrix tube containing 10ug of transfection-ready, dried plasmid DNA (reconstitute with 100 ul of water).
Reconstitution Method:	<ol style="list-style-type: none">1. Centrifuge at 5,000xg for 5min.2. Carefully open the tube and add 100ul of sterile water to dissolve the DNA.3. Close the tube and incubate for 10 minutes at room temperature.4. Briefly vortex the tube and then do a quick spin (less than 5000xg) to concentrate the liquid at the bottom.5. Store the suspended plasmid at -20°C. The DNA is stable for at least one year from date of shipping when stored at -20°C.
RefSeq:	BC062927 , AAH62927
RefSeq Size:	3942 bp
RefSeq ORF:	1625 bp
Locus ID:	13800
Cytogenetics:	1 84.93 cM
Gene Summary:	Ena/VASP proteins are actin-associated proteins involved in a range of processes dependent on cytoskeleton remodeling and cell polarity such as axon guidance and lamellipodial and filopodial dynamics in migrating cells. ENAH induces the formation of F-actin rich outgrowths in fibroblasts. Acts synergistically with BAIAP2-alpha and downstream of NTN1 to promote filipodia formation.[UniProtKB/Swiss-Prot Function]