

Product datasheet for **MG208643**

Treh (BC019214) Mouse Tagged ORF Clone

Product data:

Product Type:	Expression Plasmids
Product Name:	Treh (BC019214) Mouse Tagged ORF Clone
Tag:	TurboGFP
Symbol:	Treh
Synonyms:	2210412M19Rik
Mammalian Cell Selection:	Neomycin
Vector:	pCMV6-AC-GFP (PS100010)
E. coli Selection:	Ampicillin (100 ug/mL)



[View online »](#)

ORF Nucleotide Sequence:

>MG208643 representing BC019214
 Red=Cloning site Blue=ORF Green=Tags(s)

TTTTGTAATACGACTCACTATAGGGCGGCCGGAATTCGTCGACTGGATCCGGTACCGAGGAGATCTGCC
 GCC**CGGATCGCC**

ATGACCTGGGAGCTGCACCTGCTTCTGCTGGGGCTGGGACTTAGGTCCCAGGAGGCCCTGCCACCAC
 CCTGTGAGAGATCTACTGCCATGGAGAGCTCTGCACCAAGTTCAGATGGCCAGCTCTACCAAGATGAC
 AAGCAGTTTGTGGATATGTCACCTGGCCACATCTCCAGATGAAGTCTGCAGAAGTTCAGTGAAGTGGCCA
 CAGTCCACAACCACAGCATCCCCAAGGAACAGCTTCAGGAATTTGTCCAGAGTCACTTCCAGCCCCTGGG
 GCAGGAGCTGCAGTCTGGACCCTGAGGACTGGAAGGACAGCCCTCAGTTCCTGCAGAAGATCTCGGAT
 GCTAATCTGCGTGTCTGGGCGGAGGAGCTACACAAGATCTGAAAAAGCTGGAAAGAAGGGACTCGTAC
 TGGGTGATGGAAGCCTGCTTCTTCTGAGATGGCCTCAACAGTGAAGGGTATGCTGCAGAACTTCTGG
 ATCTGGTGAAGACCTACGGACATATCCCAATGGTGGACGCATATATTACCTGCAACGGAGCCAGCCCC
 ACTCCTGACTCTCATGATGGATCGATATGTAGCTCATACCAAGGATGTGCGCTTCTTCCAGGAGAATATT
 GGGACTTAGCCTCTGAAGTGGACTTCTGGACTGTGAACAGGACTGTCTCTGTAGTCTCAGGAGGACAAA
 GCTATGTCTTAAATCGCTACTATGTCCCTATGGGGGACCCAGGCCAGAGTCTACAGGAAAGACCGAGA
 ATTGGCAAACCTGTGCCAGAAGGGGACCGAGAGACTCTGTGGGCTGAGCTCAAGGCTGGGGCTGAGTCT
 GGCTGGGACTTCTTTCACGCTGGCTTGTGGAGGCCAGACCCTGATTTGCTCAGCAGCATCCGAACCA
 GCAAAATGGTACCCGCTGATCTGAACGCGTTCTGTGCCAAGCAGAGGAACTGATGAGTAACTTCTACTC
 CAGACTAGGGAACAACACAGAGGCCACAAAGTACAGGAACCTGCGGGCCAGCGCTTGGCCGCCATGGAA
 AGTTTTCTGTGGGACGAGCAGAAGGGTGCCTGGTTCGACTATGACTTGGAAAAGGGGAAGAAGAAGTGG
 AGTTTTATCCCTCCAACCTCACCCACTTTGGGCTGGCTTCTCAGACCCTAGTGTTCAGGACAACTGG
 TCTGAAGTACTTGGAGGACAGCAAGATCTTGACCTACCAATATGGAATCCCAACCTCTCTTCGTAACACA
 GGCCAGCAGTGGGACTTCCCAATGCCTGGGCCCACTGCAGGACCTGGTCATTAGAGGTTTGGCCAAGT
 CAGCTTCCCCCGGACTCAGGAGGTGGCTTCCAGCTGGCCAGAATTGGATCAAAACCAACTTCAAAGT
 CTACTCCAAAAGTCAGCGATGTTTGAAGATGACATCAGCAACGGTGGACATCCAGGTGGAGGAGGG
 GAGTATGAAGTTCAGGAAGGATTTGGCTGGACAAACGATTGGCCCTGATGCTTCTGGATCGCTATGGTG
 ACCAGTTGACTTCAGGGACCCAGTTAGCTTCCCTGGGACCCCACTGCCTAGTGGTGCCTTCTTCTCAG
 TCTTCTGCTACAG

AG**CGGACCG**ACGCGTACGCGGCCGCTCGAG – GFP Tag – GTTTAA

Protein Sequence:

>MG208643 representing BC019214
 Red=Cloning site Green=Tags(s)

MTWELHLLLLLGLGLRSQEALPPPCERSTAMESSTKFRWPSSTKMTSSLWICHWPHLQMKSCRSSVSWP
 QSTTTASPRNSFRNLSRVTSPPWGRSCSPGLRTGRTALSSCRRSRMLICVSGRRSYTRSGKSWERRDSY
 WYMEGLLLSEMASTVKGMLQNFLDLVKTYGHIPNGGRIYYLQRSQPPLLTLMMDRYVAHTKDVAFLQENI
 GTLASELDFWTVNRTVSVVSGGQSYVLNRYVYPYGGPRPESYRKDAELANSVPEGDRETLWELKAGAES
 GWDFSSRWLVGGPDPDLLSSIRTSKMVPADLNAFLCQAEELMSNFYSRLGNNEATKYRNLRAQLAAME
 AVLWDEQKGAWFYDLEKGGKLEFYPSNLTPLWAGCFSDPSVADKALYLEDISKILTYQYGIPTSLRNT
 GQQWDFPNAWAPLQDLVIRGLAKSASPRTQEVAFQLAQNWIKTNFKVYSQKSAMFEKYDISNGGHPGGGG
 EYEVQEGFGWTNGLALMLLDYGDQLTSGTQLASLGPCHLVAALLLSLLLQ

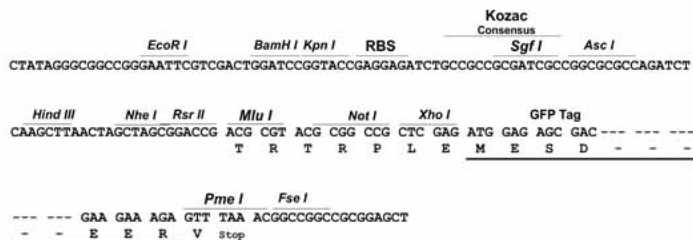
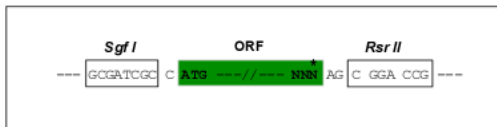
SGP**TRRRLE** – GFP Tag – V

Restriction Sites:

Sgfl-RsrII

Cloning Scheme:

Cloning sites used for ORF Shuttling:


ACCN: BC019214

ORF Size: 1623 bp

OTI Disclaimer: The molecular sequence of this clone aligns with the gene accession number as a point of reference only. However, individual transcript sequences of the same gene can differ through naturally occurring variations (e.g. polymorphisms), each with its own valid existence. This clone is substantially in agreement with the reference, but a complete review of all prevailing variants is recommended prior to use. [More info](#)
OTI Annotation: This clone was engineered to express the complete ORF with an expression tag. Expression varies depending on the nature of the gene.

Components: The ORF clone is ion-exchange column purified and shipped in a 2D barcoded Matrix tube containing 10ug of transfection-ready, dried plasmid DNA (reconstitute with 100 ul of water).

Reconstitution Method:

1. Centrifuge at 5,000xg for 5min.
2. Carefully open the tube and add 100ul of sterile water to dissolve the DNA.
3. Close the tube and incubate for 10 minutes at room temperature.
4. Briefly vortex the tube and then do a quick spin (less than 5000xg) to concentrate the liquid at the bottom.
5. Store the suspended plasmid at -20°C. The DNA is stable for at least one year from date of shipping when stored at -20°C.

RefSeq: [BC019214.1](#)
RefSeq Size: 1972 bp

RefSeq ORF: 1625 bp

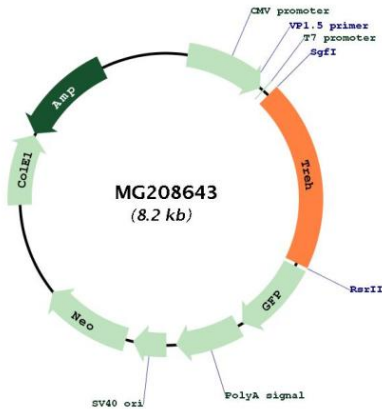
Locus ID: 58866

Cytogenetics: 9 A5.2

Gene Summary:

This gene belongs to the alpha-glucosidase family, whose members encode enzymes that carry out hydrolysis of alpha-glucoside bonds of a variety of carbohydrates. The enzyme encoded by this gene uses the disaccharide trehalose as a highly specific substrate and converts it into two glucose molecules. Alternative splicing of this gene results in multiple transcript variants encoding different isoforms. [provided by RefSeq, Apr 2013]

Product images:



Circular map for MG208643