

Product datasheet for **MG208630**

Ptpn5 (NM_013643) Mouse Tagged ORF Clone

Product data:

Product Type:	Expression Plasmids
Product Name:	Ptpn5 (NM_013643) Mouse Tagged ORF Clone
Tag:	TurboGFP
Symbol:	Ptpn5
Synonyms:	Step
Mammalian Cell Selection:	Neomycin
Vector:	pCMV6-AC-GFP (PS100010)
E. coli Selection:	Ampicillin (100 ug/mL)



[View online »](#)

ORF Nucleotide Sequence:

>MG208630 representing NM_013643
 Red=Cloning site Blue=ORF Green=Tags(s)
 TTTTGAATACGACTCACTATAGGGCGGCCGGGAATTCGTCGACTGGATCCGGTACCGAGGAGATCTGCC
 GCC**CGCATCGCC**

ATGTGCTGTAGTGAGAGGCTGTTGGGTCTCCCCAGCCGGTAGAGATGGAAGCACCGGACGAGGCCGAAG
 GACTCCCCAGCAAGCAGAAAGAGATGCCACCACCCCGCCACCCTCACCGCCTCTGAGCCAGCTCAGAA
 GCTGCCACCTCAAGGCGCTGGGAGCCACTCCCTCACCGTCAGAAGCAGCCTGTGCCTGTTTGCTGCCTCT
 CAGTTCCTGCTTGCTGTGGGTGCTCTGGCTCAGTGGCCATGGCCACTCCTGGTGCAGAACACCACAG
 ACCTCATCTCCTCCTCGCTCACAGTGTGAACCATCTGGGACCTGTGGCCTGGCTGGGTTCTGGGACCTG
 GGGGATACCAAGTCTGCTGCTAGTCTCTGACTGTGAGCCTGGTTCATCGTCACCACCCTGGTGTGGCAC
 CTCTCAAGGCACCCAGAGCCACTGCCCACTGCCCCAGAGGACAGGCGTCAATCAGTGAAGCCGGC
 AGCCTTCCTTACCTACTCAGAGTGGATGGAGGAGAAGGTAGAGGATGACTTCTGGACCTGGACCGGT
 GCCCGAGACACCTGTGTTTGACTGTGTGATGGACATCAAGCCTGAGACTGATCCTGCCTCATTGACTGTC
 AAGTCCATGGGTCTACAGGAGAGGAGAGATCCAATGTCTCCTTGACCCTGGACATGTGTACTCCTGGCT
 GCAATGAGGAGGGCTTCGGCTACCTGGTGTCTCCACGAGAAGAGTCAGCCATGAGTATCTGCTCAGCGC
 CTCCCGTGTCTCCGGGCAGAAGAGCTACATGAAAAGGCTCTGGACCCTTTCTTGCTGCAGGCGGAATTC
 TTTGAAATCCCATGAACCTTTGTGGATCCAAAAGAGTATGACATCCCAGGGCTGGTGCAGGAAGATCGGT
 ACAAACCATCCTTCCCAATCCTCACAGCAGGGTACGTCTGACGTACCAGACCTGAAGATCCTCTGAG
 TTCCTACATCAATGCCAACTACATCCGGGGCTACAGTGGGAGGAGAAGGTGTACATCGCCACGCAGGGA
 CCCATCGTCAGCACTGTGGCCGACTTTTGGCGCATGGTGTGGCAGGAGCGCACACCCATCATCGTCATGA
 TCACCAACATCGAGGAGATGAACGAGAAGTGCACAGAATACTGGCCAGAAGAGCAGGTGGTCCATGACGG
 CGTGGAGATCACCGTGCAGAAAGTCATCCACAGGAGACTACCGGCTTCGACTCATCTCCCTCAGGAGA
 GGGACTGAAGAGCGAAGCTTGAAGCATTACTGGTTCACATCCTGGCCTGACCAGAAGACCCCGACCGGG
 CTCCCCACTCCTGCACCTGGTACGGGAAGTGGAGGAGGCAGCCCAACAAGAGGGACCCCAATTGTTCCCC
 AATCATCGTTCACTGCAGTGCAGGGATTGGGAGAAGTGGTGTCTCATTGCCACCAGCATCTGCTGCCAG
 CAGCTGCGACGTGAGGGCGTGGTGGACATCCTGAAGACCAGTCCGACAGCTCCGTCAGGACAGGGGTGGCA
 TGATCCAGACATGCGAACAGTACCAGTTTGTGCACCACGCCATGAGCCTCTATGAGAAGCAGCTGTCCCT
 CCAGTCTCAGAG

ACGCGTACGCGGCCGCTCGAG - GFP Tag - GTTTAA

Protein Sequence:

>MG208630 representing NM_013643
 Red=Cloning site Green=Tags(s)
 MCCSERLLGLPQPVEMEAPDEAEGLPSKQKEMPPPPPPSPSEPAQKLPQAGSHSLTVRSSLCLFAAS
 QFLLACGVLWLSGHGHWLQNTTDLISSSLTVLNHLGPVAVLGSWTGIPSLLLVSLTVSLVIVITTLVWH
 LLKAPPEPPAPLPPEDRRQSVSRQPSFTYSEWMEEKVEDDFLDLDAVPETPVFDCVMDIKPETDPASLTV
 KSMGLQERRGSNVSLLDMCTPGCNEEGFGYLVSPREESAHEYLLSASRVLRAEELHEKALDPFLLQAEF
 FEIPMNFVDPKEYDIPGLVRKNRYKTIILPNPHSRVRLTSPDPEDPLSSYINANYIRGYSGEEKVYIATQG
 PIVSTVADFWRMVWQERTPIIIVMITNIEEMNEKCTEYWPEEQVVHDGVEITVQKVIHTEDYRLRLISLRR
 GTEERSLKHYWFTSWPDQKTPDRAPLLHLVREVEEAQQEGPHCSPIIVHCSAGIGRTGCFIATSIACCQ
 QLRREGVVDILKTTCLRQDRGGMIQTCEQYQFVHHAMSLYEKQLSLQSSE

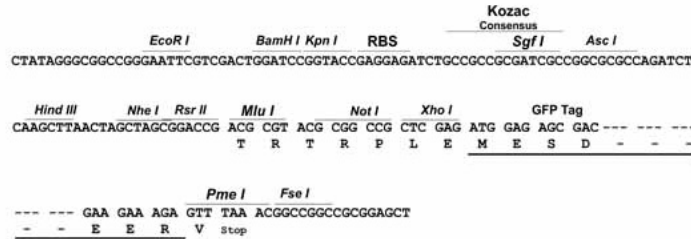
TRTRPLE - GFP Tag - V

Restriction Sites:

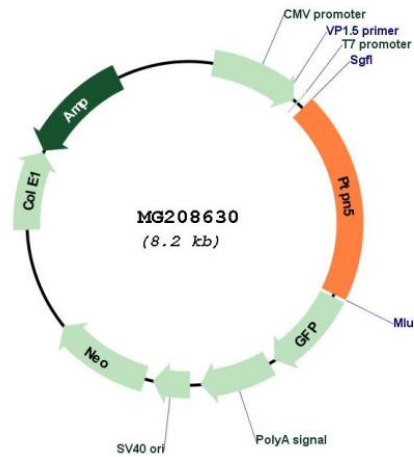
Sgfl-Mlul

Cloning Scheme:

Cloning sites used for ORF Shutting:



Plasmid Map:



ACCN:	NM_013643
ORF Size:	3131 bp
OTI Disclaimer:	The molecular sequence of this clone aligns with the gene accession number as a point of reference only. However, individual transcript sequences of the same gene can differ through naturally occurring variations (e.g. polymorphisms), each with its own valid existence. This clone is substantially in agreement with the reference, but a complete review of all prevailing variants is recommended prior to use. More info
OTI Annotation:	This clone was engineered to express the complete ORF with an expression tag. Expression varies depending on the nature of the gene.
Components:	The ORF clone is ion-exchange column purified and shipped in a 2D barcoded Matrix tube containing 10ug of transfection-ready, dried plasmid DNA (reconstitute with 100 ul of water).
Reconstitution Method:	<ol style="list-style-type: none">1. Centrifuge at 5,000xg for 5min.2. Carefully open the tube and add 100ul of sterile water to dissolve the DNA.3. Close the tube and incubate for 10 minutes at room temperature.4. Briefly vortex the tube and then do a quick spin (less than 5000xg) to concentrate the liquid at the bottom.5. Store the suspended plasmid at -20°C. The DNA is stable for at least one year from date of shipping when stored at -20°C.
RefSeq:	NM_013643.1
RefSeq Size:	3141 bp
RefSeq ORF:	1626 bp
Locus ID:	19259
UniProt ID:	P54830
Cytogenetics:	7 30.7 cM
Gene Summary:	May regulate the activity of several effector molecules involved in synaptic plasticity and neuronal cell survival, including MAPKs, Src family kinases and NMDA receptors. [UniProtKB/Swiss-Prot Function]