

## Product datasheet for **MG208627**

### **Slc22a7 (NM\_144856) Mouse Tagged ORF Clone**

#### **Product data:**

Product Type:	Expression Plasmids
Product Name:	Slc22a7 (NM_144856) Mouse Tagged ORF Clone
Tag:	TurboGFP
Symbol:	Slc22a7
Synonyms:	NLT; OAT2
Mammalian Cell Selection:	Neomycin
Vector:	pCMV6-AC-GFP (PS100010)
E. coli Selection:	Ampicillin (100 ug/mL)



[View online »](#)

**ORF Nucleotide Sequence:**

>MG208627 representing NM\_144856  
 Red=Cloning site Blue=ORF Green=Tags(s)

TTTTGTAATACGACTCACTATAGGGCGGCCGGGAATTCGTCGACTGGATCCGGTACCGAGGAGATCTGCC  
 GCC**CGGATCGCC**

ATGGGCTTCGAAGAGCTGCTGCACAAGGTGGTGGCTTTGGCCCTTCCAACTGCGGAATCTGGTGTCTGC  
 TGGCCCTGCCCGATTCTGCTCCCGATGCATTTCTCCTGCCCATCTTCATGGCTGCTGTGCTGCCCA  
 TCATTGTGCCCTGCCTGATGCCCGAGCCAACTCAGTCACCAGGACTTGTGGCTGAAAACCCATCTACCC  
 CGGGAGACTGACGGCAGCTTTAGTTCCTGCCTCCGCTTTGCCTATCCCCAGGCTCTTCCCAATGTACCT  
 TGGGAACAGAGGTGTACAACCTCTGGGGAGCCTGAGGGTGAAGCCCTCACAGTGCCTGCTCCAGGGCTG  
 GGAGTACGACCGCTCAGAATTCTTCCACCATTGCAACTGAGTGGGATCTGGTGTGTGAGCAGAGAGGC  
 CTGAACAAAGTTACATCCACGTGCTTCTCATCGGCGTGTGCTGGGGGTGTGGTGTACGGATACTTGT  
 CTGACAGGTTTGGCCGGCGCCGGCTTCTGCTGGTGGCCTACGTGAGCACCCCTGGCGCTGGCCTGATGTC  
 TGCAGCCTCGGTCAACTACATCATGTTTGTCAACCCCGCATGCTCACCGGCTCAGCCCTGGCTGGTTTT  
 ACCATCATTGTACTTCCGTTGGAGTTAGAGTGGCTGGATGTGGAGCACCGCACTGTGGCTGGGGTACATCA  
 GCACCACCTTCTGGACAGGAGGGGTGCTGCTGCTGACCCTGGTTGGGTACCTGATACGGAGCTGGCGGTG  
 GCTTCTGCTAGCTGCCACTCTGCCATGTGTCCCGGCATCATTAGCATCTGGTGGGTACCTGAGTCTGCA  
 CGATGGCTTCTAACCCAGGGTCTGTGGAGGAGGCAAAAAGTACCTGTCCATCTGTGCCAAGCTCAATG  
 GGCGGCCATAAGTGAGGACAGCCTGAGCCAGGAGGCTCTGAACAAAGTATCACCATGGAAGGGTGTGTC  
 GCAAGACCCCTCGTACTTAGACCTGTCCGGACATCGCAGCTCCGACACGTCTACTGTGCTGCATGATG  
 ATGTGGTTTGGAGTGAACTTTTCTTACTACGGCCTGACTCTGGACGCGTCCGGGCTGGGGCTGACCGTGT  
 ACCGACACAGCTGCTGTTCCGGGCTGTGGAGGTGCCTTCCAAAATTACGGTCTTCTTCTTGTGCGTCT  
 CGTGGGACGCGCCCTCACAGAGGCTGGGATGCTGCTGGCCACTGCTCTGACCTTCCGGCATCAGCCTGCTG  
 GTGTCCTCGGACACCAAGTCTTGGATCACTGCTCTGGTGGTATAGGAAAGCTTTTTCTGAAGCAGCCT  
 TTAACAGCCTACCTGTTACGCTGAGTTGTACCCTACTGTGCTCAGACAGACAGGAATGGGATTAC  
 TGCATCATAGGCCGGCTAGGGGCTCTCTGGCCCACTGGTGGTCTTGTGATGGAGTGTGGCTGTTA  
 CTGCCAAACTTGCTTATGGGGGATTTCTTCTGGCTGCCTGCACTGTACTCTGCTGCCTGAGACGA  
 AGAAAGCAGCTGCCAGAGACCATCCAGGACGTGAAAGAAAGGGGAGGAAGATAGACAGATCCGGGAC  
 TGAATTAGCC

AG**CGGACCG**ACGCGTACGCGGCCGCTCGAG - GFP Tag - GTTTAA

**Protein Sequence:**

>MG208627 representing NM\_144856  
 Red=Cloning site Green=Tags(s)

MGFEELLHKVGGFGPFQLRNLVLLALPRFLLPMHFLLPIFMAAVPAHHCALPDAPANLSHQDLWLKTHLP  
 RETDGSFSSCLRFAYPQALPNVTLGTEVYNSGEPGEPEPLTVPCSQWEYDRSEFSSIIATEWDLVCEQRG  
 LNKVTSTCFFIGVLLGAVVYGYLSDRFGRRRLLLVAIVSTLALGLMSAASVNYIMFVTRMLTGSALAGF  
 TIIVLPLELEWLDVEHRTVAGVISTTFWTGGVLLLTLVGYLIRSWRWLLAATLPCVPGIISIIWVWPESA  
 RWLLTQGRVVEAKKYL SICAKLNGRPISEDSLSEALNKVITMERVSQRPSYLDLFRTSQLRHVSLCCMM  
 MWFVNFVSYGLTLDASGLGLTVYQTQLLFGAVEVPSKITVFFLVRLVGRRLTEAGMLLATALTFGISLL  
 VSSDTKSWITALVVIGKAFSEAFITAYLFTSELYPTVLRQTGMGFTALIGRLGASLAPLVLLDGVWLL  
 LPKLAYGGISFLAACTVLLLPEPKKAQLPETIQDVERKGRKIDRSGTELA

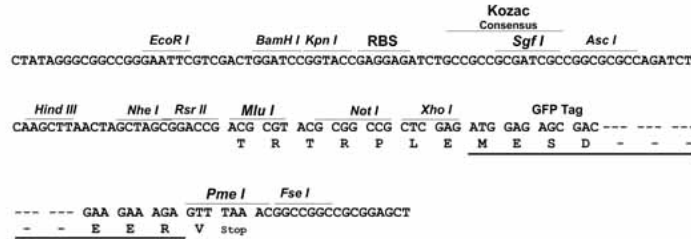
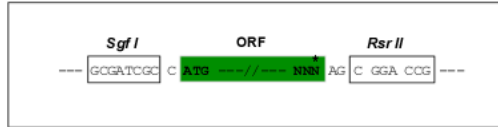
SGP**TRRRLE** - GFP Tag - V

**Restriction Sites:**

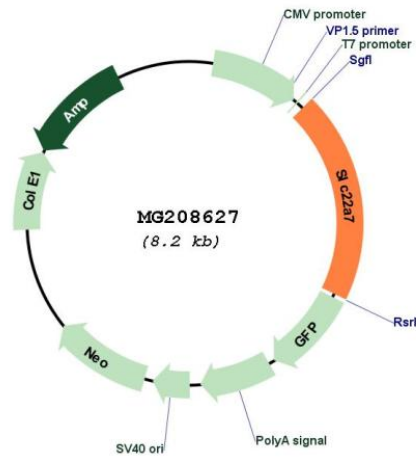
Sgfl-RsrII

Cloning Scheme:

Cloning sites used for ORF Shuttling:



Plasmid Map:



<b>ACCN:</b>	NM_144856
<b>ORF Size:</b>	1620 bp
<b>OTI Disclaimer:</b>	The molecular sequence of this clone aligns with the gene accession number as a point of reference only. However, individual transcript sequences of the same gene can differ through naturally occurring variations (e.g. polymorphisms), each with its own valid existence. This clone is substantially in agreement with the reference, but a complete review of all prevailing variants is recommended prior to use. <a href="#">More info</a>
<b>OTI Annotation:</b>	This clone was engineered to express the complete ORF with an expression tag. Expression varies depending on the nature of the gene.
<b>Components:</b>	The ORF clone is ion-exchange column purified and shipped in a 2D barcoded Matrix tube containing 10ug of transfection-ready, dried plasmid DNA (reconstitute with 100 ul of water).
<b>Reconstitution Method:</b>	<ol style="list-style-type: none"><li>1. Centrifuge at 5,000xg for 5min.</li><li>2. Carefully open the tube and add 100ul of sterile water to dissolve the DNA.</li><li>3. Close the tube and incubate for 10 minutes at room temperature.</li><li>4. Briefly vortex the tube and then do a quick spin (less than 5000xg) to concentrate the liquid at the bottom.</li><li>5. Store the suspended plasmid at -20°C. The DNA is stable for at least one year from date of shipping when stored at -20°C.</li></ol>
<b>RefSeq:</b>	<a href="#">NM_144856.1</a> , <a href="#">NP_659105.1</a>
<b>RefSeq Size:</b>	1976 bp
<b>RefSeq ORF:</b>	1623 bp
<b>Locus ID:</b>	108114
<b>UniProt ID:</b>	<a href="#">Q91WU2</a>
<b>Cytogenetics:</b>	17 C
<b>Gene Summary:</b>	Mediates sodium-independent multispecific organic anion transport. High affinity transport of glutarate and prostaglandin E2 in a sodium-independent manner. Mediates also the uptake of alpha-ketoglutarate, p-aminohippuric acid, methotrexate, ochratoxin A, valproate, allopurinol and bumetanide.[UniProtKB/Swiss-Prot Function]