

Product datasheet for **MG208625**

Cnot2 (NM_001037847) Mouse Tagged ORF Clone

Product data:

Product Type:	Expression Plasmids
Product Name:	Cnot2 (NM_001037847) Mouse Tagged ORF Clone
Tag:	TurboGFP
Symbol:	Cnot2
Synonyms:	2600016M12Rik; 2810470K03Rik; AA537049; AA959607; AW557563; C79650
Mammalian Cell Selection:	Neomycin
Vector:	pCMV6-AC-GFP (PS100010)
E. coli Selection:	Ampicillin (100 ug/mL)



[View online »](#)

ORF Nucleotide Sequence:

>MG208625 representing NM_001037847
 Red=Cloning site Blue=ORF Green=Tags(s)

TTTTGTAATACGACTCACTATAGGGCGGCCGGAATTCGTCGACTGGATCCGGTACCGAGGAGATCTGCC
 GCC**CGGATCGCC**

ATGGTGAGGACTGATGGACATACATTATCTGAGAAAAGAACTACCAGGTGACAAACAGCATGTTTGGTG
 CTTCAAGAAAGAAGTTTGTAGAGGGGGTGGACAGCGACTACCATGATGAGAACATGTAACAGCCAGTC
 TTCTATGTTCCACATCGGTGAGAGAAAGATATGCTGGCATCGCCATCTACGTCAGGTGACGTCTCTCAA
 TTTGGGGCAAGTTTATACGGGCAACAAAGTGCCTAGGCCTTCCAATGAGGGGGATGAGCAACAATACCC
 CTCAGTTAAATCGCAGCTTATCACAAGGCACTCAGTTACCGAGCCACGTACGCCAACACAGGGGTACC
 AACATGTCACCTCACACGCCTCCATCTCCAAGCAGGGGTATTTTGCCTATGAATCTAGGAATATGATG
 AACCACTCCCAGGTTGGTCAGGGCATTGGAATTCCTAGCAGGACAATAGCATGAGCAGTTCAGGGTTAG
 GTAGCCCCAACAGAAGCTCGCCAAGCATAATATGTATGCCAAAGCAACAGCCTTCTCGACAGCCCTTAC
 TGTGAACAGTATGCTGGATTTGGAATGAACAGGAATCAGGCATTTGGAATGAATAACTCCTTATCAAGT
 AACATTTTAAATGGAACAGATGGCAGTGAATGTGACAGGATTGGACCTTTCAGATTTCCAGCGTTAG
 CTGACCCGAATAGAAGGGGAGGGAGCGGCAACCAACTCCATTAATAAACCCCTTGGCTGGAAGAGCTCC
 TTACGTTGGAATGGTAACAAAACCTGCAATGAGCAATCCAAGACTTCTCAATACACAACGAAGATTTT
 CCAGCATTACCTGGTCCAGCTATAAAGATCCAACGTCAAGTAATGACGACAGCAAACTAATTTGAGTA
 CATCGGGGAGACGACTTCAAGTACAGATGGACCCAAATCCCTGGAGATAAAAGTTCAACAACAAAA
 CAATAATCAACAGAAAAAGGGGATCCAGGTGTACCTGATGGTCGAGTTACTAACATTCTCAAGGGATG
 GTGACGGACCAATTTGGAATGATTGGCCTGTTAACATTTATCAGGGCAGCAGAGACAGCCAGGAATGG
 TACATCTTGCTTAGGAAGTGACTTAACAACATTAGGCCTCAACTGAACTCACCTGAAAATCTCTATCC
 CAAATTTGCATCACCTGGGCTTCTTACCTTGTGCGCCTCAAGACATAGACTTCCATGTTCCATCAGAA
 TATTTAACAAACATTCACATTAGGGATAAGCTGGCTGCAATCAAACCTGGCCGATATGGAGAAGACCTCC
 TCTTCTATCTGTATTACATGAACGGCGGGGATGTATTACAACCTTAGCTGCGGTAGAACTTTTTAACCG
 TGATTGGAGATACCACAAGGAGGAGCGGGTATGGATTACCAGGGCACCAGGCATGGAGCCAACAATGAAA
 ACCAACACGTATGAGCGGGGACCTACTATTTCTTTGACTGTCTCAACTGGAGGAAAGTAGCTAAGGAGT
 TCCATCTGGAATATGACAAATTAGAAGAGCGGCCTCACCTGCCATCCACCTTCAACTACAACCTGCTCA
 GCAAGCCTTC

ACGCGTACGCGGCCGCTCGAG - GFP Tag - GTTTAA

Protein Sequence:

>MG208625 representing NM_001037847
 Red=Cloning site Green=Tags(s)

MVRTDGHTLSEKRNQVVTNSMFGASRKKFVEGVDSYHDENMYYSQSSMFPHRSEKMDLASPSTSGQLSQ
 FGASLYGQQSALGLPMRGMSSNTPQLNRSLSQGTQLPSHVPTTGVPTMSLHTPPSPSRGILPMNPRNMM
 NHSQVGGIGIPSRNSMSSSGLGSPNRSPSIICMPKQPSRQPFTVNSMSGFGMNRNQAFGMNNSLSS
 NIFNGTDGSENVTLGLDLSDFPALADNRNRREGSGNPTPLINPLAGRAPYVGMVTKPANEQSQDFSIHNEDF
 PALPGSSYKDPTSSNDDSKSNLSTSGKTTSSDGPFPKPGDKSSTQNNNQKQKGIQVLPDGRVTNIPQGM
 VTDQFGMIGLLTFIRAAETDPGMVHLALGSDLTTLGLNLNSPENLYPKFASPWASSPCRQDIDFHVPS
 YLNIHIRDKLAAIKLGRYGEDLLFYLYMNGGDVQLLAAVELFNRDWRVYHKEERVWITRAPGMEPTMK
 TNYERGTYYFFDCLNWRKVAKEFHLEYDKLEERPHLPSTFNYPNAQQAF

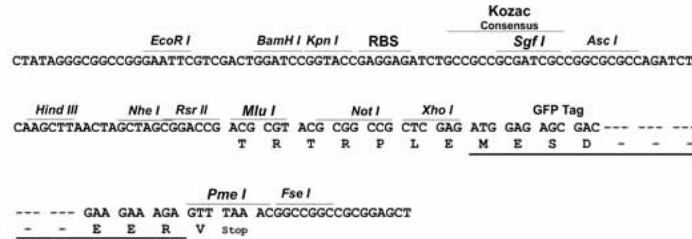
TRTRPLE - GFP Tag - V

Restriction Sites:

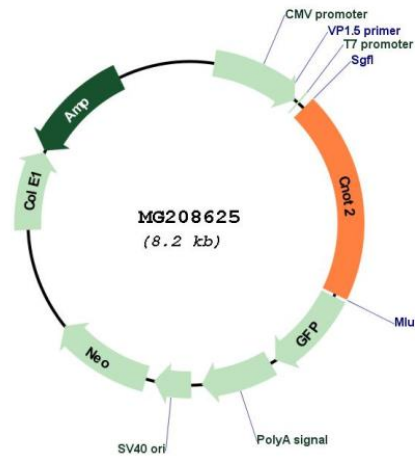
Sgfl-MluI

Cloning Scheme:

Cloning sites used for ORF Shutting:



Plasmid Map:



ACCN:	NM_001037847
ORF Size:	1620 bp
OTI Disclaimer:	The molecular sequence of this clone aligns with the gene accession number as a point of reference only. However, individual transcript sequences of the same gene can differ through naturally occurring variations (e.g. polymorphisms), each with its own valid existence. This clone is substantially in agreement with the reference, but a complete review of all prevailing variants is recommended prior to use. More info
OTI Annotation:	This clone was engineered to express the complete ORF with an expression tag. Expression varies depending on the nature of the gene.
Components:	The ORF clone is ion-exchange column purified and shipped in a 2D barcoded Matrix tube containing 10ug of transfection-ready, dried plasmid DNA (reconstitute with 100 ul of water).
Reconstitution Method:	<ol style="list-style-type: none">1. Centrifuge at 5,000xg for 5min.2. Carefully open the tube and add 100ul of sterile water to dissolve the DNA.3. Close the tube and incubate for 10 minutes at room temperature.4. Briefly vortex the tube and then do a quick spin (less than 5000xg) to concentrate the liquid at the bottom.5. Store the suspended plasmid at -20°C. The DNA is stable for at least one year from date of shipping when stored at -20°C.
RefSeq:	NM_001037847.1 , NP_001032936.1
RefSeq Size:	2746 bp
RefSeq ORF:	1653 bp
Locus ID:	72068
UniProt ID:	Q8C5L3
Cytogenetics:	10 D2
Gene Summary:	Component of the CCR4-NOT complex which is one of the major cellular mRNA deadenylases and is linked to various cellular processes including bulk mRNA degradation, miRNA-mediated repression, translational repression during translational initiation and general transcription regulation. Additional complex functions may be a consequence of its influence on mRNA expression. Required for the CCR4-NOT complex structural integrity. Can repress transcription and may link the CCR4-NOT complex to transcriptional regulation; the repressive function may specifically involve the N-Cor repressor complex containing HDAC3, NCOR1 and NCOR2. Involved in the maintenance of embryonic stem (ES) cell identity; prevents their differentiation towards extraembryonic trophectoderm lineages. [UniProtKB/Swiss-Prot Function]