

Product datasheet for **MG208622**

Bhlhb9 (NM_198161) Mouse Tagged ORF Clone

Product data:

Product Type:	Expression Plasmids
Product Name:	Bhlhb9 (NM_198161) Mouse Tagged ORF Clone
Tag:	TurboGFP
Symbol:	Bhlhb9
Synonyms:	2700087I09Rik
Mammalian Cell Selection:	Neomycin
Vector:	pCMV6-AC-GFP (PS100010)
E. coli Selection:	Ampicillin (100 ug/mL)



[View online »](#)

ORF Nucleotide Sequence:

>MG208622 representing NM_198161
 Red=Cloning site Blue=ORF Green=Tags(s)

TTTTGTAATACGACTCACTATAGGGCGGCCGGAATTCGTCGACTGGATCCGGTACCGAGGAGATCTGCC
 GCC**CGCATCGCC**

ATGACTGGTTCAAAGAATAAGGCTAGGGCACAGGCTAACTAGAAAAAGGGCAAGTGCACAAGCCAGAG
 CTGTGGCAGAGAGGGAGGCTGCTAATGCCAACCGAGTGCAGGCAAAAGCCGGGACAAAGGGAAAGGTAA
 GGCAGGCTCTAAATCAGATGCAGTGGCAGAGGTGAAGGCAGGGTCTAAGGAAAGGTAGTTGCTGAGACA
 AAAGAAGGAGCGAGACCAGAATCTAAGGCTCTAGTAAAAGGCACCTCAGATTTCAACCATAGGACTGAGA
 ACAAGTTTGTAGATCCACACGTAAGATAAGCCAGTAGTGATAACTGGTTCTGGGCTGGAGAAGATTC
 TGGTATTAATTCCTGGTTCTGGAAGGGAGAAGAGCTTAGTAATAATTCTGTTGCTAAGTGTGAAAAATAA
 CCTAGTACTAGTATCCAGGCTCGTGTGAGGAGCCCGCACCTAGGACCAGCCACAAGTCTAGGTCAGGTG
 CTGAGGAGGAGGAGAAGAGAACGTTATTGGGAAGTGGTTTGGGAAGGCGATGACTGGTTTTGATAC
 TGATCCTAAACCTGTGTTCAAAATAGTTAAACCTCAGCCAGTGGATGAAATTAATGAAAAAGATAGGCCA
 AAGGACTGGTCCGAGGTAACATATAGCCCAAAGCTCCTGCTGTAACCTCAGCAGTGTAGGTTATAGAT
 CCCAGGATTCATCTGAGGCAAGGTCCTCTTCATACATTGTTCTGGCCTCAATGAAGAGGAACTTCAAC
 AGCCTGTACTAAGAATACTCGTTCAAGCCTACAGTCTATACCTGAGTATCCATTTGGTTCTGATCCTTGC
 ATCCAGACCTTAGATGAAATTAGACAGCAAATCAAGATCAGAGAAGAGAATGGCATCAAGCCCTTCGCTT
 GCCCTTGCAAAGTGGAGTGCTATTTGGATTCTCCAGAATTTGAAAAGCTTGTTAACATACTTAAGTCAAC
 TACTGATCCTCTATTTCATAAAATAGCACAGATTGCAATGGGTATACATAAGGTTTCCATTTGCCAG
 GAATTCATTAATGAAGTGGGCGTGGTGACACTTATTGAAAGCTTGCTCAGTTTTTCTCCCTGAGGTTA
 GTATTAAGGCTGTGATTACTCTGAACCTTCCGGGATGACAGATACAACAAGGTAGAGTTTTCATGT
 TAAGCATATGTGTAAGAACTGTGCCTTCCCTTGAACCTCACCTGGCCAGCAATCTGGATTAAGATA
 ATAGGGCAGCTGACTACCGAGTCTGTCCATCACTACATTGTAGTCAGCTACTTTTCAGAGCTTTTCCATT
 TGCTGTCTCAGGGAAATCGTAAGACTAGGAATCTTGTTTTGAAAGTATTTTGAATATGTCTGAAAAATCC
 CAAGGCAGCCAGAGATATGATAAATAGAAAGCGTTAGCAGCATTAAACTCATCTTTAACCAAAAAAGAG
 GCAAAAGCCAATCTTGTTAGTGTGTGGCCATCTTTATTAACATAAAGGAGCATATTAGAAAGGGTTCAA
 TTGTAGTAGTCGATCACTTGAGTTACAATACTCTACAGCCATATCCGTGAAGTAAAGGGATTATCGA
 AAGAATG

ACGCGTACGCGGCCGCTCGAG - GFP Tag - GTTTAA

Protein Sequence:

>MG208622 representing NM_198161
 Red=Cloning site Green=Tags(s)

MTGSKNKARAQAKLEKRASAQARAVEREAANANRAGKSRDKGKAGSKSDAVAEVKAGSKGKVAET
 KEGARPESKALVKGTSDFNHRTENKFARSTRKDKPSSDNWFWAGEDSGINSWFWKGEELSNNSVAKCENK
 PSTSIQARAEEPPARTSHKSRSGAEENVEENVGNWFEGDDTGFDTDPKPVFKIVKPQPVDEINEKDRP
 KDWSEVTIWPKAPAVTPAVLGYRSQDSSEARSSSYIVLASNEEETSTACTKNTRSSLQSIPEYFPGSDPC
 IQTLDEIRQIKIREENGIKPFACPKLECYLDSPEFEKLVNILKSTTDPLIHKIAQIAMGIHKVHPFAQ
 EFINEVGVVTLIESLLSFSSPEVSIKKAVITLNSGDDRYNKVEFHVHKMCKETVSFPLNSPGQQSGLKI
 IGQLTTESVHHYIVVSYFSELFHLLSQGNRKRNLVLKVFLNMSENPKAARDMINMKALAALKLIFNQKE
 AKANLVSVAVAIFINIKHIRKGSIVVDHLSYNTLTAIFREVKGIIERM

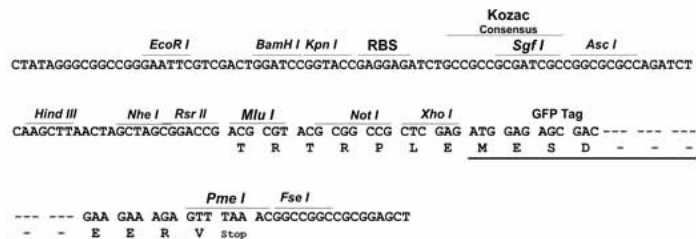
TRTRPLE - GFP Tag - V

Restriction Sites:

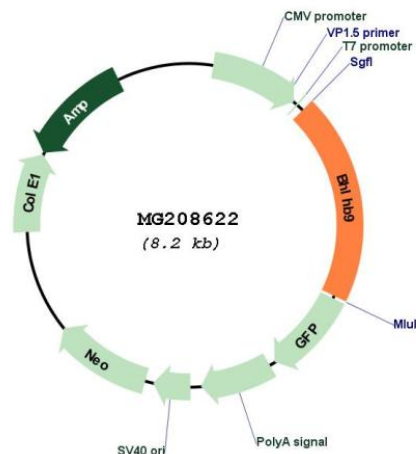
Sgfl-MluI

Cloning Scheme:

Cloning sites used for ORF Shutting:



Plasmid Map:



ACCN:	NM_198161
ORF Size:	2840 bp
OTI Disclaimer:	The molecular sequence of this clone aligns with the gene accession number as a point of reference only. However, individual transcript sequences of the same gene can differ through naturally occurring variations (e.g. polymorphisms), each with its own valid existence. This clone is substantially in agreement with the reference, but a complete review of all prevailing variants is recommended prior to use. More info
OTI Annotation:	This clone was engineered to express the complete ORF with an expression tag. Expression varies depending on the nature of the gene.
Components:	The ORF clone is ion-exchange column purified and shipped in a 2D barcoded Matrix tube containing 10ug of transfection-ready, dried plasmid DNA (reconstitute with 100 ul of water).
Reconstitution Method:	<ol style="list-style-type: none">1. Centrifuge at 5,000xg for 5min.2. Carefully open the tube and add 100ul of sterile water to dissolve the DNA.3. Close the tube and incubate for 10 minutes at room temperature.4. Briefly vortex the tube and then do a quick spin (less than 5000xg) to concentrate the liquid at the bottom.5. Store the suspended plasmid at -20°C. The DNA is stable for at least one year from date of shipping when stored at -20°C.
RefSeq:	NM_198161.2 , NP_937804.1
RefSeq Size:	2197 bp
RefSeq ORF:	1620 bp
Locus ID:	70237
UniProt ID:	Q6PB60
Cytogenetics:	X F1
Gene Summary:	May play a role in the control of cellular aging and survival.[UniProtKB/Swiss-Prot Function]