

Product datasheet for **MG208607**

Lrmp (NM_008511) Mouse Tagged ORF Clone

Product data:

Product Type:	Expression Plasmids
Product Name:	Lrmp (NM_008511) Mouse Tagged ORF Clone
Tag:	TurboGFP
Symbol:	Lrmp
Synonyms:	D6Int3; D6Int4; D6Int5; D6Int7; D6Int8; Jaw1
Mammalian Cell Selection:	Neomycin
Vector:	pCMV6-AC-GFP (PS100010)
E. coli Selection:	Ampicillin (100 ug/mL)



[View online »](#)

ORF Nucleotide Sequence:

>MG208607 representing NM_008511
 Red=Cloning site Blue=ORF Green=Tags(s)

TTTTGTAATACGACTCACTATAGGGCGGCCGGAATTCGTCGACTGGATCCGGTACCGAGGAGATCTGCC
 GCC**CGATCGCC**

ATGCTCTGTGTAAAAGGTCACCCAGAGCAGGAACCAAGATGGGGCTTTGGACGTGACAAGAGGGTGCC
 AGTGCCCACTCCACCGAAGGCTCCATCTTGGACAGGAGCTTCTAGACTGTACCAAGAATGAACGAGGA
 CCAGAGTACAGACGAGAATGGTGTGACCACTTGTATTCCGAGAGCCCGTACAGCTCAGGGAGTATCTC
 ACACAGCCATCGTCTGAACAGACTTTCCTCGGAGAGCACTGTGACGTCAAGTGTGATCTGGATCAGACA
 TTTTGACATGGCTTCTGGTACCTTACTGCAAACCTCTCTGTGAGAAGGAGGAGGAAGCAAGAGCCGC
 CTCTGCCATGCAAGGCACAGCCTAGCTCCTGTGCTTATGGAGACTACACGAGTGTGGCGTGGCCAAAG
 GCTGCATCCAGCTGGAAGCAGGAGAGGAACCTCAGAACCAAGAAACCGAGGGAAGGGCAGTCCCCCGG
 GAGAGACGGAGATTTCCATGCCCCCAAAGCATCTGTGAAGCTCGTTAACTTTACAGCAGAGTAAAAAC
 TTCAGCTAATGAGAAGGAAGTGGGGCAGAGTTCTCAGGTTATCTTTGGGACTTAAGTGTGACTGGTTT
 ACATTGGAGAAGAGGGTGAAGCTTGAAGAGAGGTCCTCCGGACCTGGCAGAGGAAAATTTGAAGAAA
 TCAAACTGTTAAAGCTTTAGAGTCGTGACTCCCTGTGTGAAGAGGACAACAGGCTCAGGAAAT
 CGTTAAGAAGCTGGAGAAGATAGTACTGCTCAGCCAGTGCACAGCCGAGTGGCCAGCAGGGCTGAG
 ATGCTGGGCGCCATCAACCAGGAAAGCCGGGTGAGTAGAGCGGTGGAGGTGATGATCCAGCACGTGGAGA
 ACCTGAAGCGGATGTACGCCAAGAGCAGCAGAGCTGGAGGATCTGAAGCAAGCACTGCTGCAGAACGA
 CAGGCTTTTTAACTCTCTGCCAGATGAAGTACTGTGATTAATAAAGCGTTTCTTCTCTAAATTCC
 AAGCCATCTTCTCGAAGAGTGACCATTCAGCCGGCGGTGAGCAGCTGGAGAATCTGGAAATGTGGGGCTGGTGT
 CAGGCATGGAAAATAATGACAGATTACGCCGGCGGTGAGCAGCTGGAGAATCTGGGACAAAGCAGGG
 TGAGACCGCCCTCGCTGCATCGCTTTCATCAGCACCTATTCCTGGGCCGACGCTGAGGACGAGAGAAGT
 GACGTGAAGCCAGAGACGCCCCAGAACCAGAAGGCGAAGAGGCAAGTGGAGGGGACCAGGAAGCCAGCC
 TTTCTGAGAGGAGAAGTAGCACATTGGCCTGGGACAGGGGCACAACTGCAGCTCAGTGGCTTCTGGGT
 CACTCACCTGCAGGCTCCTCAGAAGAGCCAACAGAGCACTCTGGCTCACGGGGCTCATCATCACTG
 ATCGCAGCGTGTGAGCTTCTCACAGGTCAGCTTTCAGACAGCCGTGGAGGCTGCGCCACACAGG
 AGGGGACTCCTGGCTGTCTCTAGAACACATCTTATGGCCATTTACCAGACTCGTGCATGATGGACCACT
 GCCAGTG

ACGCGTACGCGGCCGCTCGAG - GFP Tag - GTTTAA

Protein Sequence:

>MG208607 representing NM_008511
 Red=Cloning site Green=Tags(s)

MLCVKGPPEQEPEDGALDVTRGCQPLPTEGSILGQELLDCTRMNEDQSTDENGADHLYSESPSQLREYL
 TQPSSEQTSSSESTVTSSESGDILHMASGDLDCPLCEKEEEARAASAMQGTSLAPAAYGDYTSVGVAK
 AASQLEAGEELRTTENGKGSAPGETEISMPPKASVKL VNFQQSENTSANEKEVGAFLRLSLGLKCDWF
 TLEKRVKLEERSRDLAEENLKKEITNCLKLLESLTPLCEEDNQAQEI VKKLEKSI VLLSQCTARVASRAE
 MLGAINQESRVSRAVEVMIQHVENLKRMYAKEHAELEDLKQALLQNDRSFNLPDEDDCQIKKRSSLSNS
 KPSSLRRVTIASLPRNLGNVGLVSGMENDRFSRRSSWRILGTKQGEHRPSLHRFISTYSWADAEDERS
 DVKARDAPEPQGEAEVETRKPSSLERRSSTLAWDRGTICSSVASWVTHLQASFRRANRALWLTGLIIIL
 IAALMSFLTGQLFQTAVEAAPTQEGDSWLSLEHILWPFTRLVHDGPLPV

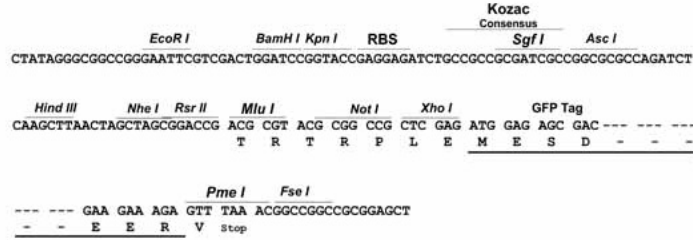
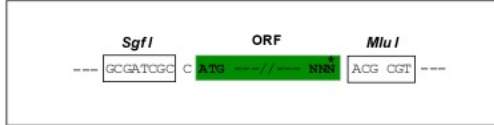
TRTRPLE - GFP Tag - V

Restriction Sites:

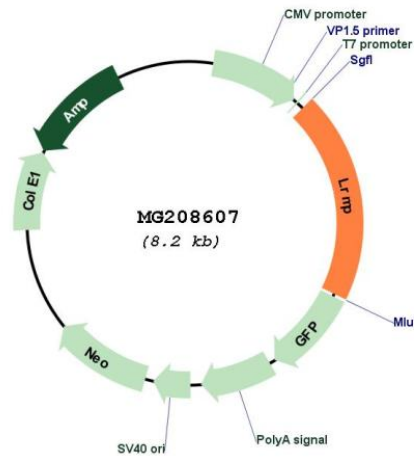
Sgfl-MluI

Cloning Scheme:

Cloning sites used for ORF Shutting:



Plasmid Map:



ACCN:	NM_008511
ORF Size:	1617 bp
OTI Disclaimer:	The molecular sequence of this clone aligns with the gene accession number as a point of reference only. However, individual transcript sequences of the same gene can differ through naturally occurring variations (e.g. polymorphisms), each with its own valid existence. This clone is substantially in agreement with the reference, but a complete review of all prevailing variants is recommended prior to use. More info
OTI Annotation:	This clone was engineered to express the complete ORF with an expression tag. Expression varies depending on the nature of the gene.
Components:	The ORF clone is ion-exchange column purified and shipped in a 2D barcoded Matrix tube containing 10ug of transfection-ready, dried plasmid DNA (reconstitute with 100 ul of water).
Reconstitution Method:	<ol style="list-style-type: none"> 1. Centrifuge at 5,000xg for 5min. 2. Carefully open the tube and add 100ul of sterile water to dissolve the DNA. 3. Close the tube and incubate for 10 minutes at room temperature. 4. Briefly vortex the tube and then do a quick spin (less than 5000xg) to concentrate the liquid at the bottom. 5. Store the suspended plasmid at -20°C. The DNA is stable for at least one year from date of shipping when stored at -20°C.
RefSeq:	NM_008511.2 , NP_032537.2
RefSeq Size:	2263 bp
RefSeq ORF:	1620 bp
Locus ID:	16970
Cytogenetics:	6 77.34 cM
Gene Summary:	Plays a role in the delivery of peptides to major histocompatibility complex (MHC) class I molecules; this occurs in a transporter associated with antigen processing (TAP)-independent manner. May play a role in taste signal transduction via ITPR3. May play a role during fertilization in pronucleus congression and fusion.[UniProtKB/Swiss-Prot Function]