

Product datasheet for **MG208603**

Gnl3 (BC037996) Mouse Tagged ORF Clone

Product data:

Product Type:	Expression Plasmids
Product Name:	Gnl3 (BC037996) Mouse Tagged ORF Clone
Tag:	TurboGFP
Symbol:	Gnl3
Synonyms:	Ns, MGC46970
Mammalian Cell Selection:	Neomycin
Vector:	pCMV6-AC-GFP (PS100010)
E. coli Selection:	Ampicillin (100 ug/mL)



[View online »](#)

ORF Nucleotide Sequence:

>MG208603 representing BC037996
 Red=Cloning site Blue=ORF Green=Tags(s)

TTTTGTAATACGACTCACTATAGGGCGGCCGGGAATTCGTCGACTGGATCCGGTACCGAGGAGATCTGCC
 GCC**CGGATCGCC**

ATGAAGAGGCCTAAGTTAAAGAAAGCGAGTAAACGTATGACCTGCCATAAGCGATATAAAATTCAAAAA
 AGGTCCGAGAACATCATCGAAAATTAAGGAAGGAAGCTAAAAACGGGGTACAAGAAGCCTAGGAAGGA
 CCCAGGTGTTCCAAATAGTGCTCCCTTTAAAGAGGCTCTTCTTCGTGAAGCTGAAGCTAAGGAAACAGCAG
 CTTGAAGAACTAAAAACAGCAGCAGAAACTTGATAGGCAAAAAGAGCAAGAAAGGAAAAAGAAACTTGAAG
 TTAGCCCTGGTGATGAGCAGTCTAATGTGGAACTAGGGAGGAATCTGACGAGCCAAAAGAAAGAAAGC
 CAAAGCAGGCAACAGAAATCCAAAGAAGTTACATTGCCAGGAACCTAAAAAGGTGATTGAAGCCTCAGAC
 ATTGTGTTAGAAGTTTTGGATGCCAGAGATCCTTGGTTCAGGTGTCCTCAGATAGAAGAAGCTGTTA
 TCCAGAGTGGGAGTAAGAAGCTGATACTTGTATTAATAAGTCTGATCTAGTACCAAAGGAGAATTTGGA
 GAACTGGCTAAATTTTGAATAAAGAATTGCCAACCGTGGTGTCAAAGCCTCAACAACTTAAAGAAC
 AGAAAGACATTCAGATAAAAAAGAAGAAAGTTGTTCCATTCCAAGCAAAATCTGCTGTGGCAAGGAAG
 CCCTTTGGAAGCTTCTTGAGATTTTCAGCAGTCTGTGGAAAGGATATTCAGTTGGAGTGATTGGTTT
 CCCAAATGTGGGAAAAGCAGTGTCAATTAAGCTTAAAAACAAGAATGGATTTGCAATGTTGGGATTTCC
 ATGGGACTTACAAGGAGCATGCAGATTGCCCCCTAGACAAGCAGATCACAAATCATAGACAGTCCATGCC
 TAATTATCTCACCTTGTAACTCCCCACTGCACCTGCCCTTCGGAGTCCAGCAAGCATTGAGGAACTAAG
 ACCGCTGGAGGCTGCCAGTGCCATTCTGTCTCAGGCTGATAATGAACAGGTGGTGTAAAAATACTGTC
 CCTGAGTATAAGGATTCTCTGCATTTTTTACTAACTTGCTCAAAGAAGAGGTCTGCACCAAAAAGGTG
 GAAGCCCAAAATGTGGAAGTGTCTGAAGCTGGTGGTCTGAGTGGACAGGTGCCTCATTAGGTTACTA
 TTGCCATCCCCCTGCATCCTGGAATCATTCTCTGCATTTAATGAGAATATTGCAGCAGTCATGAAGAAG
 GGCTTTAATCTAGAAGAACTAGAAAAGAATAATGCACACAGCATACAAGTCTCAAGGGCCCTCATTTAA
 CTAATAGAATCCTTTTTCGGTCTTCGGGCTGACAAATGGAATACTAGACGAGAAGGACATAGTCGAAGA
 ATCACCAAGACAGACAGAAGACAAACAGGATGCTGACGATCAAGAAAATGGTAGTGGTGAAGAAATGCA
 GAGATCTCAGATGTGGCCCTGTAGAAGAGACCAGGGAGCTGTCACCTGAGCAATCAACAGCAGGTAAGC
 CATCTGACGGTCTGCCTTGATAGAGCGAGTCAAGAGGATGAAACCTATGACTTCACCACAGATTA
 TATA

ACGCGTACGCGGCCGCTCGAG – GFP Tag – GTTTAA

Protein Sequence:

>MG208603 representing BC037996
 Red=Cloning site Green=Tags(s)

MKRPKLKKASKRMTCHKRYKIQKKVREHHRKLRKEAKKRGHKKPRKDPGVPNSAPFKEALLREELRKQQ
 LEELKQQKLDROKQERKRKLEVSPGDEQSNVETREESDEPKRKKAKAGKQNPKKLHCQELKKVIEASD
 IVLEVLDARDPLGCRCPQIEEAVIQSGSKLILVLNKSIDLVPKENLENWLNKELPTVVFKASTNLKN
 RKTFKIKKKKVVFPQSKICCGKEALWLLGDFQQSCGKDIQVGVIGFPNVGKSSVINSLKQEWICNVGIS
 MGLTRSMQIVPLDKQITIIDSPCLIIISPCNSPTALALRSPASIEELRPLEAASAILSQADNEQVVLKYTV
 PEYKDSLHFFTKLAQRRGLHQGGSPNVESAACLWSEWTGASLGYCHPPASWNHSLHFNENIAAVMCK
 GFNLEELEKNNHSIQVLKGPLHTNRILFRSSGLTNGILDEKDIVEESPRQTEDKQDADDQENGSGERNA
 EISDVAPVEETRELSPEQSTAGKPSDGSSALDRASQEDETYDFTTDYI

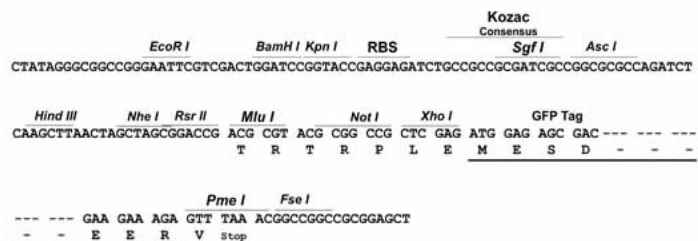
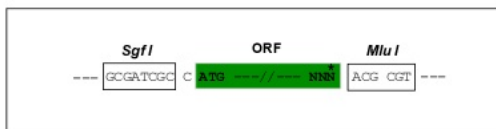
TRTRPLE – GFP Tag – V

Restriction Sites:

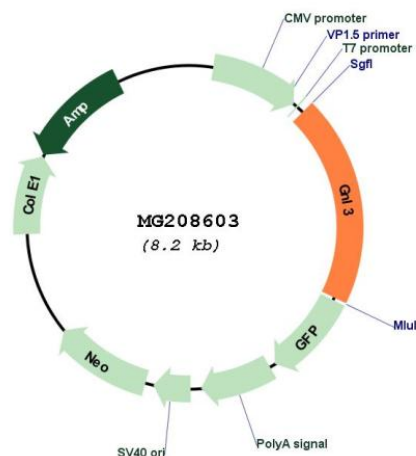
Sgfl-MluI

Cloning Scheme:

Cloning sites used for ORF Shutting:



Plasmid Map:



ACCN:	BC037996
ORF Size:	1616 bp
OTI Disclaimer:	The molecular sequence of this clone aligns with the gene accession number as a point of reference only. However, individual transcript sequences of the same gene can differ through naturally occurring variations (e.g. polymorphisms), each with its own valid existence. This clone is substantially in agreement with the reference, but a complete review of all prevailing variants is recommended prior to use. More info
OTI Annotation:	This clone was engineered to express the complete ORF with an expression tag. Expression varies depending on the nature of the gene.
Components:	The ORF clone is ion-exchange column purified and shipped in a 2D barcoded Matrix tube containing 10ug of transfection-ready, dried plasmid DNA (reconstitute with 100 ul of water).
Reconstitution Method:	<ol style="list-style-type: none">1. Centrifuge at 5,000xg for 5min.2. Carefully open the tube and add 100ul of sterile water to dissolve the DNA.3. Close the tube and incubate for 10 minutes at room temperature.4. Briefly vortex the tube and then do a quick spin (less than 5000xg) to concentrate the liquid at the bottom.5. Store the suspended plasmid at -20°C. The DNA is stable for at least one year from date of shipping when stored at -20°C.
RefSeq:	BC037996 , AAH37996
RefSeq Size:	1806 bp
RefSeq ORF:	1616 bp
Locus ID:	30877
Cytogenetics:	14 19.09 cM
Gene Summary:	May be required to maintain the proliferative capacity of stem cells (By similarity). Stabilizes MDM2 by preventing its ubiquitination, and hence proteasomal degradation. [UniProtKB/Swiss-Prot Function]