

## Product datasheet for **MG208601**

### **Kcnn1 (BC090622) Mouse Tagged ORF Clone**

#### **Product data:**

Product Type:	Expression Plasmids
Product Name:	Kcnn1 (BC090622) Mouse Tagged ORF Clone
Tag:	TurboGFP
Symbol:	Kcnn1
Synonyms:	AI854248; KCa2.1; SK1
Mammalian Cell Selection:	Neomycin
Vector:	pCMV6-AC-GFP (PS100010)
E. coli Selection:	Ampicillin (100 ug/mL)



[View online »](#)

**ORF Nucleotide Sequence:**

>MG208601 representing BC090622  
 Red=Cloning site Blue=ORF Green=Tags(s)

TTTTGTAATACGACTCACTATAGGGCGGCCGGGAATTCGTCGACTGGATCCGGTACCGAGGAGATCTGCC  
 GCC**CGATCGCC**

ATGAGTAGCCACAGCCACAATGGCAGCGTGGGGCAGCCTCTGGCAGCGGCCTGGATTCTGGGCTGGG  
 AGCCTGTGGACCTGAGGCAGGCCGCCCTGCAGCCACCAAGGCCAGGCCTGCAGATGGTGGCCAA  
 GGGTCAGCCTGTCAAGCTGTACCCGGTGGTTCAGGGGCCACCCAGGAGCAGGAGGAGGAAGAGGAA  
 GAGGAGGAGGAGGAGGAGGACAAGACAGGCTCAGGGAAGCCCCAACAGTCAGCCACCGCCTGGGACACC  
 GCAGGGCCCTCTTTGAAAAGCGTAAACGGCTCAGTGACTATGCGCTCATCTTTGGCATGTTTGGATTGT  
 CGTCATGGTGACAGAAACAGAGCTGTCTGGGGTGTATACACCAAGGAGTCACTGTCTTTTTGCTCTG  
 AAATGCCTCATCAGCCTGTCCACTGTCTTTGCTTGGCCTTGTATCCTGTACCACGCCGAGAGATCC  
 AGCTGTTCTTGGTGGACAATGGTCCGACGACTGGCGTATCGCCATGACGTGGGAGCGCGTGTCCCTGAT  
 CTCGCTGGAGTTGGTCGTGTGCCATCCACCCGGTCCCGGCCACTATCGCTTACGTGGACGGCACGA  
 CTGGCCTTCTCTGGTGCCTGCGCAGCCGAGGCAGACCTGGATGTGTGCTGTCCATCCCATGTTCC  
 TGCCTCTACCTGCTGGCTCGGGTCTGCTCCTGCACAGCCGCATCTTACCGATGCATCCAGCCGCGAG  
 CATCGGGCCCTTAACCGCGTCACCTTCAACACACGCTTCGTACCAAGACGCTCATGACCATCTGCCCC  
 GGCCTGTGTTGTTGGTCTTACGCGTCTCCTCCTGGATCGTTGCTGCGTGGACAGTGCAGCGTGTGTGAGA  
 GGTACCACGATAAGCAGGAAGTGACCAGCAACTCCTGGGAGCCATGTGGCTCATCTCCATCACCTTCTT  
 GTCCATTGGCTATGGAGACATGGTCCGCATACCTACTGTGGGAAGGGTGTGTCTGCTCACTGGCATC  
 ATGGGAGCAGGCTGCACTGCCTCGTGGTGGCCGTCGTGGCTCGGAAGTTGGAACACCAAGGCTGAGA  
 AACACGTGCACAACCTTATGATGGACACACAGCTCACCAAGCGGTCAAAAATGCTGCTGCAAAACGTTCT  
 CAGGGAGACATGGCTCATCTACAAACACACAGGCTGGTGAAGAAGCCAGACCAAGGCCGGGTTCCGAAA  
 CACCAGCGTAAGTTCCTTACGGCCATCCATCAGGCTCAGAAGCTCCGAAGTGTGAAGATTGAACAAGGGA  
 AGGTGAACGATCAGGCCAACACGCTGGCTGAGCTGGCCAAGGCACAGAGCATCGCATATGAGGTGGTGTG  
 AGAGCTGCAGGCCAGCAGGAGGAGTTGGAGGCACGCCTAGCCGCTTGGAGAGCCGACTGGATGTCCTG  
 GGTGCCTCCCTGCAGGCTCTACCAGGCCTATAGCCCAAGCCATATGCCCTCTACCACCACCTGGCCTG  
 GGCTGGTACCTGGCCACAGCCACCCAGAGCCACAAAGCCACTGGCTGCCACCATGGGATCAGACTG  
 TGGG

**ACGCGTACGCGGCCGCTCGAG** - GFP Tag - GTTTAA

**Protein Sequence:**

>MG208601 representing BC090622  
 Red=Cloning site Green=Tags(s)

MSSSHNGSVGQPLGSGPGFLGWEPVDPEAGRPLQPTQGPGLQMVAKQPVRLSPGSGRHPQEQQE  
 EEEEEEDKTGSGKPPTVSHRLGHRRALFEKRKRLSDYALIFGMFGIVVMVTETELSWGVYTKESLCSFAL  
 KCLISLSTVILLGLVILYHAREIQLFLVDNGADDWRIAMTWERVSLISLELVCAIHPVPGHYRFTWTAR  
 LAFSLVPSAAEADLDVLLSIPMFLRLYLARVMLLHSRIFTDASSRSIGALNRVTFNTRFVTKLMTICP  
 GTVLLVFSVSSWIVAAWTVRVCERYHDKQEVTSNFLGAMWLISITFLSIGYDMVPHTYCGKGVCLLTGI  
 MGAGCTALVVAVVARKLELTKAEKHVHNFMMDTQLTKRVKNAAANVLRETWLIYKHTRLVKKPDQGRVRK  
 HQRKFLQAIHQAKLRSVKIEQKVNDAQNTLAELAKAQSIAYEVVSELQAQQEELARLAALESRLDVL  
 GASLQALPGLIAQAICPLPPWPGPGLATATQSPQSHWLPMTMGSDCG

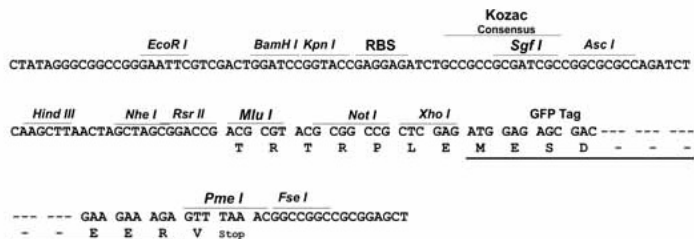
**TRTRPLE** - GFP Tag - V

**Restriction Sites:**

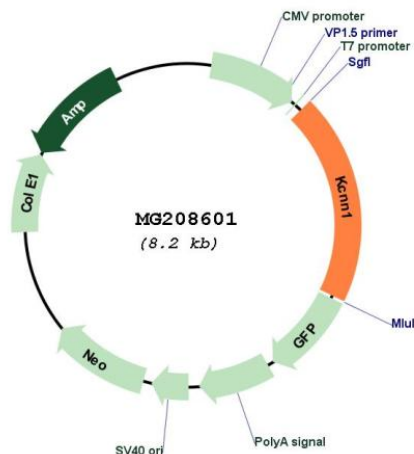
Sgfl-Mlul

Cloning Scheme:

Cloning sites used for ORF Shutting:



Plasmid Map:



<b>ACCN:</b>	BC090622
<b>ORF Size:</b>	1616 bp
<b>OTI Disclaimer:</b>	The molecular sequence of this clone aligns with the gene accession number as a point of reference only. However, individual transcript sequences of the same gene can differ through naturally occurring variations (e.g. polymorphisms), each with its own valid existence. This clone is substantially in agreement with the reference, but a complete review of all prevailing variants is recommended prior to use. <a href="#">More info</a>
<b>OTI Annotation:</b>	This clone was engineered to express the complete ORF with an expression tag. Expression varies depending on the nature of the gene.
<b>Components:</b>	The ORF clone is ion-exchange column purified and shipped in a 2D barcoded Matrix tube containing 10ug of transfection-ready, dried plasmid DNA (reconstitute with 100 ul of water).
<b>Reconstitution Method:</b>	<ol style="list-style-type: none"><li>1. Centrifuge at 5,000xg for 5min.</li><li>2. Carefully open the tube and add 100ul of sterile water to dissolve the DNA.</li><li>3. Close the tube and incubate for 10 minutes at room temperature.</li><li>4. Briefly vortex the tube and then do a quick spin (less than 5000xg) to concentrate the liquid at the bottom.</li><li>5. Store the suspended plasmid at -20°C. The DNA is stable for at least one year from date of shipping when stored at -20°C.</li></ol>
<b>RefSeq:</b>	<a href="#">BC090622</a> , <a href="#">AAH90622</a>
<b>RefSeq Size:</b>	2610 bp
<b>RefSeq ORF:</b>	1616 bp
<b>Locus ID:</b>	84036
<b>Cytogenetics:</b>	8 B3.3
<b>Gene Summary:</b>	Forms a voltage-independent potassium channel activated by intracellular calcium. Activation is followed by membrane hyperpolarization. Thought to regulate neuronal excitability by contributing to the slow component of synaptic afterhyperpolarization. The channel is blocked by apamin (By similarity).[UniProtKB/Swiss-Prot Function]