

## Product datasheet for **MG208574**

### **Ifnlr1 (NM\_174851) Mouse Tagged ORF Clone**

#### **Product data:**

Product Type:	Expression Plasmids
Product Name:	Ifnlr1 (NM_174851) Mouse Tagged ORF Clone
Tag:	TurboGFP
Symbol:	Ifnlr1
Synonyms:	CRF2-12; Il28ra
Mammalian Cell Selection:	Neomycin
Vector:	pCMV6-AC-GFP (PS100010)
E. coli Selection:	Ampicillin (100 ug/mL)



[View online »](#)

**ORF Nucleotide Sequence:**

>MG208574 representing NM\_174851  
 Red=Cloning site Blue=ORF Green=Tags(s)

TTTTGTAATACGACTCACTATAGGGCGGCCGGAATTCGTCGACTGGATCCGGTACCGAGGAGATCTGCC  
 GCC**GCGATCGCC**

ATGTGGCGGGCCGACCGGTGGGCGCCCTACTCCTGTTCCTGTTGCAGAGCGCCCTAGGAAGCCCCGTC  
 TAGCCCCACCCAGAAACGTGACACTCTTCTCCAGAACTCACTGTTTACCTGACATGGCTCCGGGGCT  
 TGGGAGCCCCCAAATGTGACCTATTTCTGTGACCTACCAAAGCTATATCAAAACCGTTGGCGACCACTG  
 GAGCATTGTGCAGGTATCAAGGCTCTGGTGTGTCCCTGATGTGCCTGAAGAACTGAACCTGTACTCCA  
 AGTTCAAAGGACGAGTACAGGCAGTTCACGACAGGGCAGGTCCACCGGTGGAGTCCCGGTACCTGGA  
 ATACCTTTTTGACGTGGAGCTAGCCCCGCCACCCTGGTGTCTACCCAGATGGAGAAGATCTAAGGGTC  
 AATGCTACCTACCAGCTGCCACCTTGCATGCCGTCTGGAAGTGAAGTACCAGGTGGAGTCTGGAAGG  
 AGGGTCTGGGAAGCAAGACCCTGTTTCTGACACTCCCTATGGCCAGCCAGTGCAGATTCCTCTCCAGCA  
 AGGTGCTAGCCGACGCCACTGCCTCAGCGCCAGAACCCTATACCTTAATTGACATTAAGTACAGCCAG  
 TTCTCTGAGCCCAGCTGCATCTTCTAGAGGCTCCAGGGGACAAAAGAGCTGTCTGGCATTGCCCTCAC  
 TCTTGCTTCTACTGATAGCAGCCGTTGCAGCAGGTGTGGCATGGAAGATAATGAAAGGAAACCCCTGGTT  
 TCAGGGGGTGAAGACGCCCGGGCACTGGACTTTTCTGAATACAGATACCCAGTGGCAACCTTTCAGCCC  
 AGTGGACCTGAGTTCTCTGATGACTTGATCCTTTGTCCCAGAAGGAAGTACCATAAGGAACAGGCCAG  
 CCCCTCAGGTGAGAAACCCAGCCACGCTACAGGCAGGACCAGAAAGAGACAGTACTGAGGATGAAGACGG  
 GGACACAGACTACGATGACGACGGTACAGCGTCCAGCCCTACCTGGAACGGCCCTCTTCATCAGCGAG  
 AAGCCCCGGGTTATGGAACACTCGGAGACAGCAGTCTGGGGTGGATTACAGGGGGCCTTGGACTTCCC  
 CAGTTGGGAGTACGGCTCCTCTGCATGGGACTTTCAGACAGGAGCTGGTCCAGCACAGGGGACTCCTC  
 ATATAAGGATGAAGTTGGGTCTTCCAGCTGTTTGGACCGAAAGGAGCCGACAGGCGCCCTGTGGGGAT  
 TGGCTCCAGGAGGCTCTCCCATGCTGGAATTTCTGAGGACTTGGCACCGTGGAAAGAGCCTCTGAAGG  
 ATGGCCTCTCCGGGTGGAGGATTTCTGGTTCCTTATCCTCAAAGAGAGATCTGGCTCCTGTGGAGCCCC  
 AGTTTCTCTCAGACACTGACTTCTGTGGTCAACAATCCTGAGGGGGAGGAGGAACAGGAGGACGAG  
 GAGGAAGAGGAGGAGGAAGAGGAGGAGGAAGACTGGGAATCAGAACTAAGGGCAGCAATGCCGGCTGTT  
 GGGCACTTCAAGCGTGCAGAGGACGGAGGTACAGGGCCGGATGCTGGGAGATTACTTGGTCAGG

**ACGCGTACGCGGCCGCTCGAG** – GFP Tag – GTTTAA

**Protein Sequence:**

>MG208574 representing NM\_174851  
 Red=Cloning site Green=Tags(s)

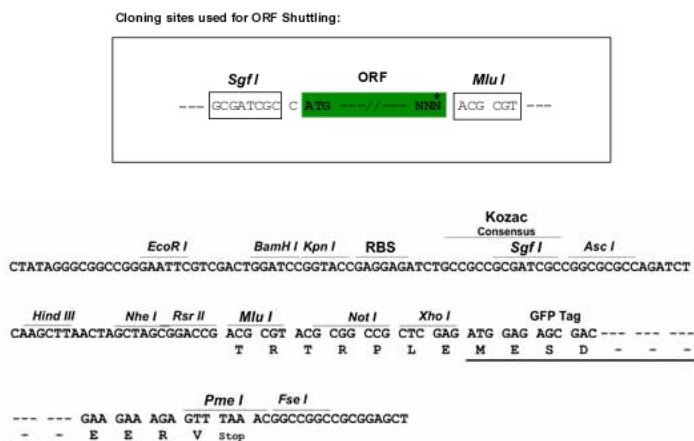
MWRADRWAPLLLFLQLSALGRPRLAPPRNVTLFSQNFVYLTWLPGLGSPPNVTVFYVYQSYIKTGWRPV  
 EHCAGIKALVCPLMCLKLNLYSKFKGRVQAASAQGRSPRVESTRYLEYLFDELAPPTLVLTQMEKILRV  
 NATYQLPPCMPSLELKYQVEFWKEGLGSKTLFPDTPYGPVQIPLQQGASRRHCLARTVYTLIDIKYSQ  
 FSEPSIFLEAPGDKRAVLALPSLLLLLIAAVAAGVAWKIMKGNPWFQGVKTPRALDFSEYRYPVATFQP  
 SGPEFSDDLILCPQKELTIRNRPAPQVRNPATLQAGPERDSTEDDGDYDDDDGSDVQPYLERPLFISE  
 KPRVMEHSETDESGVDSGGPWTSPVGSWSSDRSWSSTGDSSYKDEVGSSSLDRKEPDQAPCGD  
 WLQEALPCLEFSEDLTGVEEPLKDGLSGWRI SGSLSSKRD LAPVEPPVSLQTLTFCWNNPEGEEQEDE  
 EEEEEEEEEEDWESEPKGSNAGCWGTSSVQRTEVRGRMLGDYLV

**TRTRPLE** – GFP Tag – V

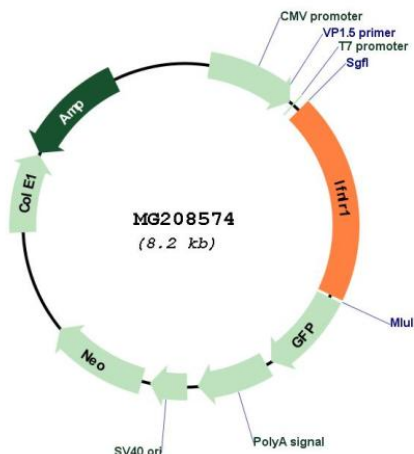
**Restriction Sites:**

Sgfl-MluI

Cloning Scheme:



Plasmid Map:



<b>ACCN:</b>	NM_174851
<b>ORF Size:</b>	1605 bp
<b>OTI Disclaimer:</b>	The molecular sequence of this clone aligns with the gene accession number as a point of reference only. However, individual transcript sequences of the same gene can differ through naturally occurring variations (e.g. polymorphisms), each with its own valid existence. This clone is substantially in agreement with the reference, but a complete review of all prevailing variants is recommended prior to use. <a href="#">More info</a>
<b>OTI Annotation:</b>	This clone was engineered to express the complete ORF with an expression tag. Expression varies depending on the nature of the gene.
<b>Components:</b>	The ORF clone is ion-exchange column purified and shipped in a 2D barcoded Matrix tube containing 10ug of transfection-ready, dried plasmid DNA (reconstitute with 100 ul of water).
<b>Reconstitution Method:</b>	<ol style="list-style-type: none"><li>1. Centrifuge at 5,000xg for 5min.</li><li>2. Carefully open the tube and add 100ul of sterile water to dissolve the DNA.</li><li>3. Close the tube and incubate for 10 minutes at room temperature.</li><li>4. Briefly vortex the tube and then do a quick spin (less than 5000xg) to concentrate the liquid at the bottom.</li><li>5. Store the suspended plasmid at -20°C. The DNA is stable for at least one year from date of shipping when stored at -20°C.</li></ol>
<b>RefSeq:</b>	<a href="#">NM_174851.2</a> , <a href="#">NP_77276.2</a>
<b>RefSeq Size:</b>	3962 bp
<b>RefSeq ORF:</b>	1608 bp
<b>Locus ID:</b>	242700
<b>UniProt ID:</b>	<a href="#">Q8CGK5</a>
<b>Cytogenetics:</b>	4 D3
<b>Gene Summary:</b>	<p>The IFNLR1/IL10RB dimer is a receptor for the cytokine ligands IFNL2 and IFNL3 and mediates their antiviral activity. The ligand/receptor complex stimulate the activation of the JAK/STAT signaling pathway leading to the expression of IFN-stimulated genes (ISG), which contribute to the antiviral state. Determines the cell type specificity of the lambda interferon action. Shows a more restricted pattern of expression in the epithelial tissues thereby limiting responses to lambda interferons primarily to epithelial cells of the respiratory, gastrointestinal, and reproductive tracts. Seems not to be essential for early virus-activated host defense in vaginal infection, but plays an important role in Toll-like receptor (TLR)-induced antiviral defense. Plays a significant role in the antiviral immune defense in the intestinal epithelium.</p> <p>[UniProtKB/Swiss-Prot Function]</p>