

Product datasheet for **MG208545**

Zyx (BC054775) Mouse Tagged ORF Clone

Product data:

Product Type:	Expression Plasmids
Product Name:	Zyx (BC054775) Mouse Tagged ORF Clone
Tag:	TurboGFP
Symbol:	Zyx
Synonyms:	9530098H06Rik; R75157
Mammalian Cell Selection:	Neomycin
Vector:	pCMV6-AC-GFP (PS100010)
E. coli Selection:	Ampicillin (100 ug/mL)



[View online »](#)

ORF Nucleotide Sequence:

>MG208545 representing BC054775
 Red=Cloning site Blue=ORF Green=Tags(s)

TTTTGTAATACGACTCACTATAGGGCGGCCGGAATTCGTCGACTGGATCCGGTACCGAGGAGATCTGCC
 GCC**CGCATCGCC**

ATGGCGGCCCGCCCGCCCTCCCGCATCTCCGTCTCCGTCTCGGCCCGCGTTTTACGCCCCGAGAG
 AGAAGTTCGCCCCGTTGTGCCCCAAAGCCAAAGTGAATCCTTCCGGCCTGGGGACAGCGAGCCTCC
 TGTAGCAGCCGGGGCCAAAGAGCGCAGATGGGTGGGTGGGCGAGATCCACCACCACCCCGGAAGAC
 TTTCTTTGCCCCCTCTCCCTTATTGGGGAGGGCGACGACTCAGAGGGTGCCTGGGAGGTGCCTTCC
 CACCTCCACCTCCCCGATGATCGAGGAACATTCCCCCTGCTCCTCTGGAGGAGGACATTTCCCTC
 CCCTCCACCTCCACTGGAGGAGGAGGGAGGCCCTGAGGCCCTACCCAGCTCCACCCGAGGTATCATCC
 GGATATGTACCCACCAGTTGCCACTCCATTTGTTCCAAGCCTAGTACCAAACCTGCCCTGGGGCA
 CAGCACCTTGCCTCCTTGAAGACCCCTTCTAGCTCCAGCCACCACCTCAGCCGAGGCCAAGCCTCA
 GGTCCAGCTCCATGTCCAGCCTCAGGCCAAGCCCATGTCCAACCCAGCCTGTGTCTTCTGCTAATACA
 CAGCCCCGGGGTCCCCTTCTCAGGCACCAACTCCAGCACCTAAGTTTGCCTCAGTGGCTCTAAATTTA
 CTCCCCTGGTTTCCAAGTTCAGCCCTGGTGTCTCAAGTGGACCTGGGCCACAGCCCAATCAAAAAATGGT
 GCCTCCGGATGCTCCTTCTGTGAGCACAGGCTCCCCTCAGCCCCCTAGCTTACCTATGCTCAGCAG
 AAGGAGAAGCCCTAGTTCAAGAGAAGCAGCACCACAGCCTCCACCAGCTCAAAACCAAAACCAGGTAC
 GCTCTCCTGGAGGCCAGGCCCTTGACCCTGAAGGAGGTAGAGGAGTTGGAGCAGCTGACCCAGCAGCT
 GATGCAGGACATGGAACCCCTCAGAGGCAGAGCGTGGCAGTGAATGAGTCTGTGGCAATGCAATCAG
 CCACTGGCCCGTGCACAGCCTGCGGTTTCGTGACTGGGACAACCTGTTCCACATCACCTGCTTCACTTGC
 ATCAGTGTACAGCAGCTGACAGGACAGCAGTCTATAGCCTGGAGGGAGCACCATATTGTGAGGCGCTG
 CTACACCGACACTTTGGAGAAGTGCAACACCTGTGGGCAGCCATCACTGACCGCATGCTGAGGGCCACT
 GGCAAAGCCTACCACCCACAGTCTTCACTGTGTGGTCTGCGCCTGTCCCCTGGAGGGCACCTCCTTCA
 TTGTGGACCAGGCCAATCAGCCCCACTGTGTCCCTGACTATCACAAGCAATACGCTCCAAGGTGCTCCGT
 CTGCTCGGAGCCAATCATGCCTGAGCCTGGCCGAGACGAGACTGTGCGAGTAGTGGCGCTGGATAAAGAC
 TTTCATATGAAGTGTACAAGTGTGAGGACTGTGGAAACCTCTGTCCATTGAGGCAGATGACAACGGCT
 GTTCCCTCTGGATGGCCAGTCTTTGTCGGAAGTGCCACTCCGCTAGAGCCAGACC

ACGCGTACGCGGCCGCTCGAG - GFP Tag - GTTTAA

Protein Sequence:

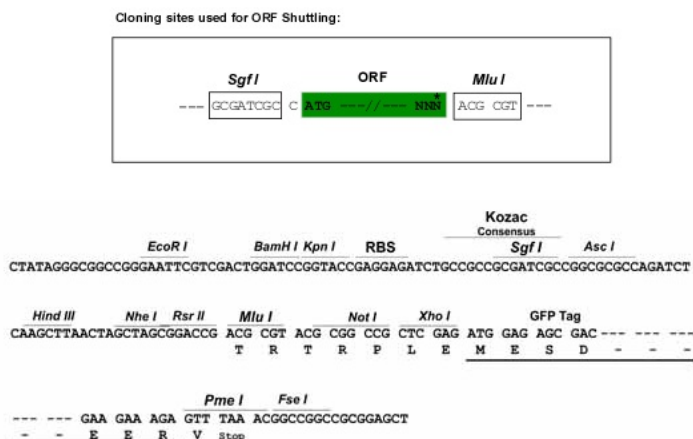
>MG208545 representing BC054775
 Red=Cloning site Green=Tags(s)

MAAPRPPPAISVSVSAPAFYAPQKFFAPVVAPKPKVNPFRPGDSEPPVAAGAQRAMGRVGEIPPPPPED
 FPLPPPPLIGEGDSEALGGAFPPPPPMIEEPFPPAPLEEDIFSPPPPLEEEGPEAPTQLPPQVSS
 GYVPPVATPFVVPKSTKPAPGGTAPLPPWKTPSSSQPPQPQAKPQVQLHVQPQAKPHVQPQPVSSANT
 QPRGPLSQAPTPAPKFAVAPKFTPVVSKFSPGAPSGPGQPNQKMPDPDAPSSVSTGSPQPPSFTYAQQ
 KEKPLVQEKQHPQPPAQNQNQVRSPGGPGLTLKEVEELEQLTQQLMQDMEHPQRQSVAVNESGCKNQ
 PLARAQPAVRALGQLFHITCFTCHQCQQQLQGQQFYSLGAPYCEGCTDTLEKCNCTCGQPITDRMLRAT
 GKAYHPQCFTCVVACPLEGTSFIVDQANQPHCVDPYHKQYAPRCSVCSEPIPEPGRDETIVRVVALDKN
 FHMCKYKCEDCGKPLSIEADDNGCFPLDGHVLCRKCHSARAQT

TRTRPLE - GFP Tag - V

Restriction Sites:

Sgfl-MluI

Cloning Scheme:


ACCN: BC054775

ORF Size: 1601 bp

OTI Disclaimer: The molecular sequence of this clone aligns with the gene accession number as a point of reference only. However, individual transcript sequences of the same gene can differ through naturally occurring variations (e.g. polymorphisms), each with its own valid existence. This clone is substantially in agreement with the reference, but a complete review of all prevailing variants is recommended prior to use. [More info](#)

OTI Annotation: This clone was engineered to express the complete ORF with an expression tag. Expression varies depending on the nature of the gene.

Components: The ORF clone is ion-exchange column purified and shipped in a 2D barcoded Matrix tube containing 10ug of transfection-ready, dried plasmid DNA (reconstitute with 100 ul of water).

Reconstitution Method:

1. Centrifuge at 5,000xg for 5min.
2. Carefully open the tube and add 100ul of sterile water to dissolve the DNA.
3. Close the tube and incubate for 10 minutes at room temperature.
4. Briefly vortex the tube and then do a quick spin (less than 5000xg) to concentrate the liquid at the bottom.
5. Store the suspended plasmid at -20°C. The DNA is stable for at least one year from date of shipping when stored at -20°C.

RefSeq: [BC054775](#), [AAH54775](#)

RefSeq Size: 2323 bp

RefSeq ORF: 1601 bp

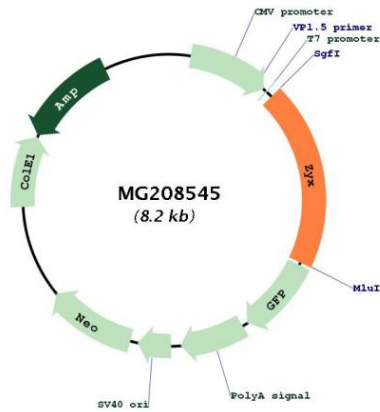
Locus ID: 22793

Cytogenetics: 6 B2.1

Gene Summary:

Adhesion plaque protein. Binds alpha-actinin and the CRP protein. Important for targeting TES and ENA/VASP family members to focal adhesions and for the formation of actin-rich structures. May be a component of a signal transduction pathway that mediates adhesion-stimulated changes in gene expression (By similarity).[UniProtKB/Swiss-Prot Function]

Product images:



Circular map for MG208545