

## Product datasheet for **MG208530**

### **Eya2 (NM\_010165) Mouse Tagged ORF Clone**

#### **Product data:**

Product Type:	Expression Plasmids
Product Name:	Eya2 (NM_010165) Mouse Tagged ORF Clone
Tag:	TurboGFP
Symbol:	Eya2
Synonyms:	Eab1
Mammalian Cell Selection:	Neomycin
Vector:	pCMV6-AC-GFP (PS100010)
E. coli Selection:	Ampicillin (100 ug/mL)



[View online »](#)

**ORF Nucleotide Sequence:**

>MG208530 representing NM\_010165  
 Red=Cloning site Blue=ORF Green=Tags(s)

TTTTGTAATACGACTCACTATAGGGCGGCCGGAATTCGTCGACTGGATCCGGTACCGAGGAGATCTGCC  
 GCC**CGATCGCC**

ATGTTAGAAGTGGTGACCTCACCAGCCTCGCAACAAGCAGTGACTGGAGCGAGCACGGTGTCCCGTGG  
 GGACGCTGAGTGACAGGGAAGGCATCGCCAAATCAGCGGCTCTGAGTGTGCCTCAGCTCTTTGTGAAGTC  
 TCATCCACGTGTCCCTCCTGGTCAGTCCTCCACAGCCATGGCGGCTATGGCCAGACACAGTACAGCACA  
 GGCATTACAGCAGGCACCACCTATACAGCGTACCCAACCTCCGGCGCAAGCCTATGGAATCCCCCTTACA  
 GCATCAAGACAGAAGACAGTTTGAATCACTCCCCAGCCAGAGCGGGTCTGAGCTACGGACCGAGCTT  
 CAGCACCGCGCTGTGGACAGAGCCCCACACCTACCCCGTGCACAGCACCGCTGGGCTCTATCAAGGC  
 GCCAACGGACTGACCAACACCGCTGGATTTGGGAGCGTGCACCAGGATTATCCGCTCCTACCCAGCTTTT  
 CACAGAACCAGTACCCCACTATTTAGCCCATCATAACAACCCGCTACGTCCTGCCAGCAGCCTCTG  
 CTCTCGCCCTCTCCAGTCCACCTACGTCCTCCAGGAGGCTCCTCACAATGTCCCAGCCAGAGTTCT  
 GAGTCCCTGGCCGGAGACTACAACACACAACCGACCCTCCACACCAGCAAAGGAGGGTGACACAGAGA  
 GGCCACATCGAGCCTCGGATGGGAAGCTACGGGGCCGGTCAAAGAGAAATAGTGACCCTTCCCAGCAGG  
 AGACAATGAAATCGAGCGGTGTTCTGCTGGGACCTGGACGAGACAATCATTATCTTCCACTCCCTGCTC  
 ACAGGGACGTTTGCATCCAGATACGGGAAGGACACCACGACGCTGTGCGCATTGGCCTGATGATGGAGG  
 AGATGATCTTCAACCTTGTGACACACCTGTTCTTCAATGACCTGGAGGACTGTGACCAATCCACGT  
 GGATGATGTCTCATCCGATGACAATGGTCAGGATTTAAGCACATACAACTTCTCCACTGATGGCTCCAC  
 AGCACGGCGCCAGGAGCCAGCTTGTGCTGGGTACAGGTGTTATGGCGGTGTGGACTGGATGAGGAAAC  
 TGGCCTTCCGCTACCGTCTGTGAAGGAGATGTACAACACCTACCGCAACAACGTGGGTGGCTTGTATAGG  
 TGCTCCCAAAAGAGAGACCTGGCTGCAGCTGCGCGCCGAGCTGGAGGCCCTGACTGACCTCTGGTCAAC  
 CACTCCCTGAAAGCCCTCAATCTCATCAACTCTGACCCAACTGTGTCAATGTGTTGGTACCACCACGC  
 AACTGATCCCTGCATTGGCCAAGGTCTGCTGTACGGTCTGGGCTCCGTGTTCCCATCGAGAACATCTA  
 CAGTGGCAACAAGACAGGCAAGGAGAGCTGCTTCAAAGAATCATGCAGAGGTTTGGCCGAAAGCTGTC  
 TACATTGTGATAGGCGACGGGTAGAGGAAGAGCAAGGAGCCAAAAGCACAACATGCCTTTCTGGAGGA  
 TATCTGTGATGCTGACCTGGAGGCTCTAAGGCATGCCCTGGAAGTGGAGTATCTA

**ACGCGTACGCGGCCGCTCGAG** - GFP Tag - GTTTAA

**Protein Sequence:**

>MG208530 representing NM\_010165  
 Red=Cloning site Green=Tags(s)

MLEVVTSPSLATSSDWSEHGAAVGTLSDREGIAKSAALSVPQLFVKSHRPVPPGQSSTAMAAYGQTQYST  
 GIQQAPPYTAYTPAQAYGIPPYSIKTEDSLNHSQSGFLSYGPSFSTAPAGQSPYTYVHSTAGLYQG  
 ANGLTNTAGFGSVHQDYPSYPSFSQNPYPQYFSPSYNPPYVPASSLCSPLSTSTYVLQEAPHNVPSQSS  
 ESLAGDYNTHNGPSTPAKEGDTERRPHRASDGKLRGRSKRNSDPSAPAGDNEIERVFWDLDETIIFHSL  
 TGTAFASRYGKDTTTSVRIGLMEEMIFNLADTHLFFNDLEDQIHVDDVSSDDNGQDLSTYNFSTDGFH  
 STAPGASLCLGTGVHGGVDWMRKLAFRYRRVKEMYNTYRNNVGGIIGAPKRETWLQLRAELEALTDLWLT  
 HSLKALNLSRPNVNLVTTTQLIPALAKVLLYGLGSVFIENIYSATKTGKESCFERIMQRFGRKAV  
 YIVIGDVEEEQAKKHNMFPWRISCHADLEALRHALELEYL

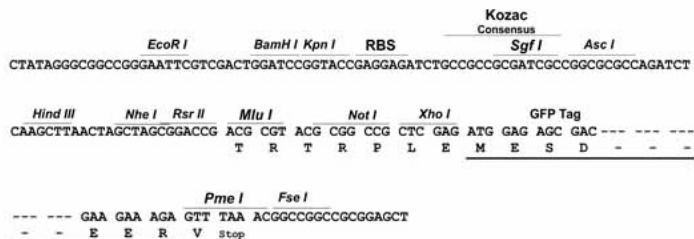
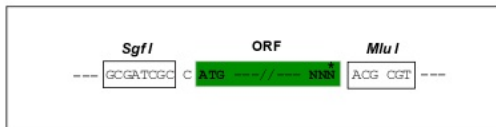
**TRTRPLE** - GFP Tag - V

**Restriction Sites:**

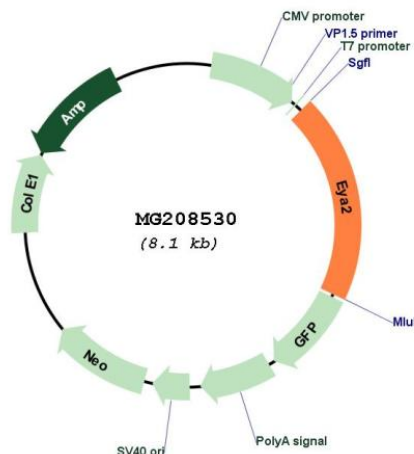
Sgfl-MluI

**Cloning Scheme:**

Cloning sites used for ORF Shutting:



**Plasmid Map:**



<b>ACCN:</b>	NM_010165
<b>ORF Size:</b>	1596 bp
<b>OTI Disclaimer:</b>	The molecular sequence of this clone aligns with the gene accession number as a point of reference only. However, individual transcript sequences of the same gene can differ through naturally occurring variations (e.g. polymorphisms), each with its own valid existence. This clone is substantially in agreement with the reference, but a complete review of all prevailing variants is recommended prior to use. <a href="#">More info</a>
<b>OTI Annotation:</b>	This clone was engineered to express the complete ORF with an expression tag. Expression varies depending on the nature of the gene.
<b>Components:</b>	The ORF clone is ion-exchange column purified and shipped in a 2D barcoded Matrix tube containing 10ug of transfection-ready, dried plasmid DNA (reconstitute with 100 ul of water).
<b>Reconstitution Method:</b>	<ol style="list-style-type: none"><li>1. Centrifuge at 5,000xg for 5min.</li><li>2. Carefully open the tube and add 100ul of sterile water to dissolve the DNA.</li><li>3. Close the tube and incubate for 10 minutes at room temperature.</li><li>4. Briefly vortex the tube and then do a quick spin (less than 5000xg) to concentrate the liquid at the bottom.</li><li>5. Store the suspended plasmid at -20°C. The DNA is stable for at least one year from date of shipping when stored at -20°C.</li></ol>
<b>RefSeq:</b>	<a href="#">NM_010165.1</a>
<b>RefSeq Size:</b>	2364 bp
<b>RefSeq ORF:</b>	1599 bp
<b>Locus ID:</b>	14049
<b>UniProt ID:</b>	<a href="#">O08575</a>
<b>Cytogenetics:</b>	2 85.83 cM
<b>Gene Summary:</b>	This gene encodes a member of the eyes absent protein family. The encoded protein is a tyrosine phosphatase which acts as a transcriptional activator during development. Alternative splicing results in multiple transcript variants. [provided by RefSeq, Dec 2012]