

## Product datasheet for **MG208511**

### **Slc37a1 (NM\_153062) Mouse Tagged ORF Clone**

#### **Product data:**

Product Type:	Expression Plasmids
Product Name:	Slc37a1 (NM_153062) Mouse Tagged ORF Clone
Tag:	TurboGFP
Symbol:	Slc37a1
Synonyms:	G3PP
Mammalian Cell Selection:	Neomycin
Vector:	pCMV6-AC-GFP (PS100010)
E. coli Selection:	Ampicillin (100 ug/mL)



[View online »](#)

**ORF Nucleotide Sequence:**

>MG208511 representing NM\_153062  
 Red=Cloning site Blue=ORF Green=Tags(s)

TTTTGTAATACGACTCACTATAGGGCGGCCGGAATTCGTCGACTGGATCCGGTACCGAGGAGATCTGCC  
 GCC**CGGATCGCC**

ATGGCTCTGCTTCCCGTGGGCATCCGCTTCATCATCTCCTTCTCCAGGGATCAGTGGTACCGGGCTTTCA  
 TTTTATGCTGACCTTTCTGCTCTATGCAAGCTTCCACTTATCCCGAAAGCCTATCAGCATAGTGAAGGG  
 CGAGCTTCAACAAGCAGTGTACTGCAGGAGATGGCCTGAGTCTCCATTAGTGACCTAGCAGCAGCACC  
 AGGCATGGCCCCACCACTGGCTCCTGAACAATGAGACCGACTGTGGCTGGGCCCCCTTCGATAAGAACA  
 ATTACCAGCAGCTGCTTGGAGCCCTGGACTACGCCTTCTGTGCGCCTATGCCATTGGAATGTACCTGAG  
 TGAATAATAGGGGAACGCCTGCCGATTAGGTATTACCTGACTTTCGGGATGCTGGCCAGCGGCCCTTC  
 ACAGCCCTGTTCCGGCTTGGGCTATTTCTACAACATCCACAGCCTGGGATTCTACGTGGTGACCCAGATCA  
 TTAATGGACTGGTGCAGACCACAGGCTGGCCAGCGTTGTACCTGCCTCAGCAACTGGTTTGGAAAAGG  
 AAGGCGTGGCCTGATCATGGGGATTTGAACTCCACACCTCCGTGGGCAACATTCTGGGGTCTTGATT  
 GCCGGCTACTGGGTGCTACGTGCTGGGCCTGTATTTATCGTGCCTGGGGCCATCGTGGCAGCCATGG  
 GGATAGTGTGCTTCTCTTTCTCATCGAACACCCTAAGGACGTCAAGTGCTCCTCCACCCTCCCCACGCA  
 CCCTAGAGCCTCTGAGAAATGGCATAAACAGATTTAGACTGCAGAAGCAAACCACGTACAGTGAAGAAGT  
 GGACCTCTGGACCAGAGCTTCACTGCTTGTACTCTCCGACGGGAAGAACCCCTTCACCCAAGCCATA  
 TTGTTGCTCCTCCTGCTGATGGCAACATGGCCGCCATCAGCTTACGGGAGCCCTGAGGATCCCGGGCGT  
 GATTGAGTTTTCTGTGTTTGTGTTTGCAGCTGAGTACACATTCTGTTCTGGCTCCCGCTG  
 TACATCACCAGTGTAGATCACCTGGATGCCAAGAAAGCTGGGAGCTGTCCACATTGTTTACGCTGGGCG  
 GGATCTTTGGTGGGATTCTAGCAGGCTGATCTCCGACCGTCTGGAGAAACGAGCCTCCACTTGTGGTCT  
 GATGCTATTGCTGGCAGCACCCACGCTCTATGTCTTCTCCTCCGTCAGCAGAATGGGCTAGAAGCCACC  
 ATAGCCATGTTGCTCCTCAGTGGGGCCCTGGTGGGCGCCCTACGCACTGATCACCCTGCGTCTCTG  
 CAGACTTGGGACTCACAAGAGTCTGAAAGGAACTCCCACGCCCTGTCCACCCTGACAGCCATCATCGA  
 CGGCACTGGGCTGTAGGAGCTGCCTTGGGGCCCTGCTGGCAGGGCTCATCTCCCCTCTGGATGGAGC  
 AACGTGTTCTACATGCTGATGTTTGCAGATGCCTGTGCCTTACTGTTCTGCTCCGCTCATACACAAGG  
 AGTTGAGCTGTCCAGGCCAGCCGAGGATCCAGGCTCCGCTGAAGGAACAC

**ACGCGTACGCGGCCGCTCGAG** - GFP Tag - GTTTAA

**Protein Sequence:**

>MG208511 representing NM\_153062  
 Red=Cloning site Green=Tags(s)

MALLPVGIRFIIISFSRDQWYRAFIFMLTFLLYASFHLSRKPISIVKELHKQCTAGDGPESPFSDPSSST  
 RHGPTHWLLNNETDCGWAPFDKNNYQQLLALDYAFLLCAYAIMYLSGIIGERLPIRYLLTFGMLASGAF  
 TALFGLGYFYNIHSLGFYVVTQIINGLVQTTGWPSVVTCLSNWFGKRRRLIMGIWNSHTSVGNILGSLI  
 AGYWVSTCWGLSFIVPGAIVAAMGIVCFLLFIEHPKDVKCSSTLPTHPRASENGINRFLQKQTTYSEKN  
 GPLDPELQCLLLSDGKNPLHPSHIVVLPADGNMAAISFTGALRIPGVIEFSLCLLFAKLVSYTFWFLPL  
 YITSVDHLDAKKAGELSTLFDVGGIFGGILAGVISDRLEKRASTCGLMLLLAAPTLYVFSVSRMGLEAT  
 IAMLLLSGALVSGPYALITTAVSADLGTGTHKSLKGNHALSTVTAIIDGTGSVGAALGPLLAGLISPSGWS  
 NVFYMLMFADACALLFLVRLIHKELSCPAPAAGIQAPLKEH

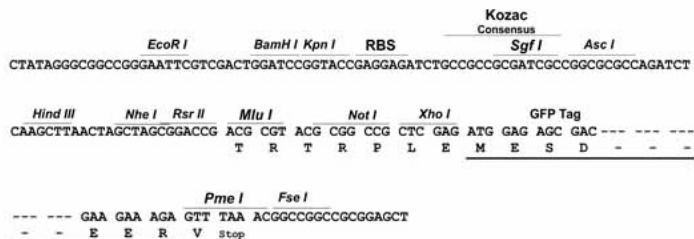
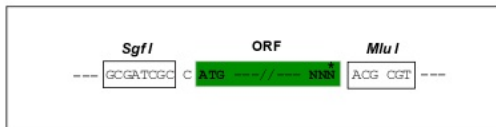
**TRTRPLE** - GFP Tag - V

**Restriction Sites:**

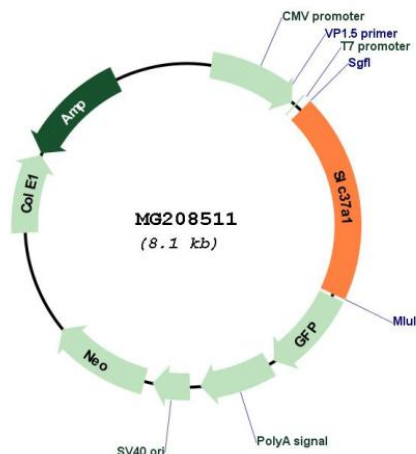
Sgfl-MluI

Cloning Scheme:

Cloning sites used for ORF Shutting:



Plasmid Map:



<b>ACCN:</b>	NM_153062
<b>ORF Size:</b>	1593 bp
<b>OTI Disclaimer:</b>	The molecular sequence of this clone aligns with the gene accession number as a point of reference only. However, individual transcript sequences of the same gene can differ through naturally occurring variations (e.g. polymorphisms), each with its own valid existence. This clone is substantially in agreement with the reference, but a complete review of all prevailing variants is recommended prior to use. <a href="#">More info</a>
<b>OTI Annotation:</b>	This clone was engineered to express the complete ORF with an expression tag. Expression varies depending on the nature of the gene.
<b>Components:</b>	The ORF clone is ion-exchange column purified and shipped in a 2D barcoded Matrix tube containing 10ug of transfection-ready, dried plasmid DNA (reconstitute with 100 ul of water).
<b>Reconstitution Method:</b>	<ol style="list-style-type: none"><li>1. Centrifuge at 5,000xg for 5min.</li><li>2. Carefully open the tube and add 100ul of sterile water to dissolve the DNA.</li><li>3. Close the tube and incubate for 10 minutes at room temperature.</li><li>4. Briefly vortex the tube and then do a quick spin (less than 5000xg) to concentrate the liquid at the bottom.</li><li>5. Store the suspended plasmid at -20°C. The DNA is stable for at least one year from date of shipping when stored at -20°C.</li></ol>
<b>RefSeq:</b>	<a href="#">NM_153062.2</a> , <a href="#">NP_694702.1</a>
<b>RefSeq Size:</b>	2942 bp
<b>RefSeq ORF:</b>	1596 bp
<b>Locus ID:</b>	224674
<b>UniProt ID:</b>	<a href="#">Q8R070</a>
<b>Cytogenetics:</b>	17 B1
<b>Gene Summary:</b>	Inorganic phosphate and glucose-6-phosphate antiporter. May transport cytoplasmic glucose-6-phosphate into the lumen of the endoplasmic reticulum and translocate inorganic phosphate into the opposite direction. Independent of a luminal glucose-6-phosphatase. May not play a role in homeostatic regulation of blood glucose levels.[UniProtKB/Swiss-Prot Function]