

Product datasheet for **MG208509**

Cnot2 (BC063105) Mouse Tagged ORF Clone

Product data:

Product Type:	Expression Plasmids
Product Name:	Cnot2 (BC063105) Mouse Tagged ORF Clone
Tag:	TurboGFP
Symbol:	Cnot2
Synonyms:	2600016M12Rik; 2810470K03Rik; AA537049; AA959607; AW557563; C79650
Mammalian Cell Selection:	Neomycin
Vector:	pCMV6-AC-GFP (PS100010)
E. coli Selection:	Ampicillin (100 ug/mL)



[View online »](#)

ORF Nucleotide Sequence:

>MG208509 representing BC063105
 Red=Cloning site Blue=ORF Green=Tags(s)

TTTTGTAATACGACTCACTATAGGGCGGCCGGAATTCGTCGACTGGATCCGGTACCGAGGAGATCTGCC
 GCC**CGGATCGCC**

ATGTTGAAAGAAGTTGCACAGGTGACAAACAGCATGTTTGGTCTTCAAGAAAGAAGTTGTAGAGGGG
 TGGACAGCGACTACCATGATGAGAACATGTACTACAGCCAGTCTTCTATGTTCCACATCCGTGAGAGAA
 AGATATGCTGGCATCGCCATCTACGTCAGGTGAGTCTCAATTTGGGCAAGTTTATACGGGCAACAA
 AGTGCAGTACGGCTTCCAATGAGGGGGATGAGCAACAATACCCCTCAGTTAAATCGCAGCTTATCACAAG
 GCAGTACGTTACCGAGCCAGTACGCCAACACAGGGGTACCAACAATGTCAGTTCACACGCCTCCATC
 TCCAAGCAGGGGTATTTGCCTATGAATCCTAGGAATATGATGAACCACTCCAGGTTGGTCAGGGCATT
 GGAATTCCTAGCAGGACAAATAGCATGAGCAGTTCAGGGTTAGGTAGCCCAACAGAAGCTGCCAAGCA
 TAATATGATGCCAAAGCAACAGCCTTCTCGACAGCCTTTACTGTGAACAGTATGTCTGGATTTGGAAT
 GAACAGGAATCAGGCATTTGGAATGAATAACTCCTTATCAAGTAACATTTTAAATGGAACAGATGGCAGT
 GAAAATGTGACAGGATTGGACCTTTAGATTTCCAGCGTTAGCTGACCGGAATAGAAGGGAAGGGAGCG
 GCAACCCAACTCCATTAATAAACCCCTTGGCTGGAAGAGCTCCTTACGTTGGAATGGTAACAAAACCTGC
 AAATGAGCAATCCCAAGACTTCTCAATACACAACGAAGATTTCCAGCATTACCTGGTCCAGCTATAAA
 GATCCAACGTCAAGTAATGACGACAGCAAACTAATTTGAGTACATCGGGGAAGACGACTTCAAGTACAG
 ATGGACCCAAATCCCTGGAGATAAAAGTTCAACAACACAAAACAATAATCAACAGAAAAAGGGGATCCA
 GGTGTTACCTGATGGTCGAGTTACTAACATTCTCAAGGGATGGTGACGGACCAATTTGGAATGATTGGC
 CTGTTAACATTTATCAGGGCAGCAGAGACAGACCCAGGAATGGTACATCTTGCTTTAGGAAGTGACTTAA
 CAACATTAGGCCTCAATCTGAACCTCACCTGAAAATCTCTATCCCAAATTTGCATCACCCCTGGGCTTCTTC
 ACCTTGTGCGCCTCAAGACATAGACTTCCATGTTCCATCAGAATATTTAACAAACATTCACATTAGGGAT
 AAGCTGGCTGCAATCAAACCTGGCCGATATGGAGAAGACCTCCTTCTATCTGTATTACATGAACGGCG
 GGGATGTATTACAACCTTAGCTGCGGTAGAACTTTTTAACCGTGATTGGAGATACCACAAGGAGGAGCG
 GGTATGGATTACCAGGGCACCAGGCATGGAGCCAAACAATGAAAACCAACACGTATGAGCGGGGGACCTAC
 TATTTCTTTGACTGTCTCAACTGGAGGAAAGTAGCTAAGGAGTTCATCTGGAATATGACAAATTAGAAG
 AGCGGCCTCACCTGCCATCCACCTTCAACTACAACCTGCTCAGCAAGCCTTC

ACGCGTACGCGGCCGCTCGAG – GFP Tag – GTTTAA

Protein Sequence:

>MG208509 representing BC063105
 Red=Cloning site Green=Tags(s)

MLKEVAQVTNSMFGASRKKFVEGVDSYHDENMYYSQSSMFPHRSEKMDLASPSTSGQLSQFGASLYGQQ
 SALGLPMRGMSNNTPLNRSLSQGTQLPSHVPTTGVPTMSLHTPPSPSRGILPMNPRNMNHSQVGQGI
 GIPSRNMSSSGLGSPNRSSPIICMPKQPSRQPFVNSMSGFGMNRNQAFGMNNSLSSNIFNGTDGS
 ENVTGLDLSDFPALADNRREGSGNPTPLINPLAGRAPYVGMVTKPANEQSQDFSIHNEDFPALPGSSYK
 DPTSSNDDSKSNLSTSGKTTSSDGPKFPKDKSSTTQNNNQKKGIQVLPDGRVTNIPQGMVTDQFGMIG
 LLTFIRAETDPGMVHLALGSDLTTLGLNLNSPENLYPKFASPWASSPCRQDIDFHVPEYLNIHIRD
 KLAAIKLGRYGEDLLFYLYMNGDVLQLLAVELFNRDWRHYKKEERVWITRAPGMEPTMTNTYERGT
 YFFDCLNWRKVAKEFHLEYDKLEERPHLPSTFNYPAAQAF

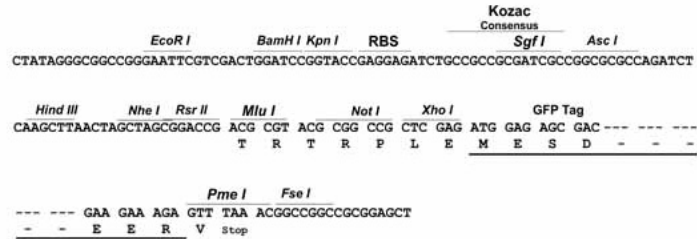
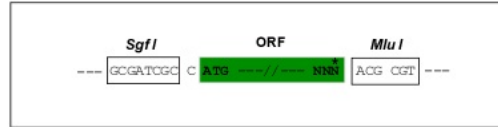
TRTRPLE – GFP Tag – V

Restriction Sites:

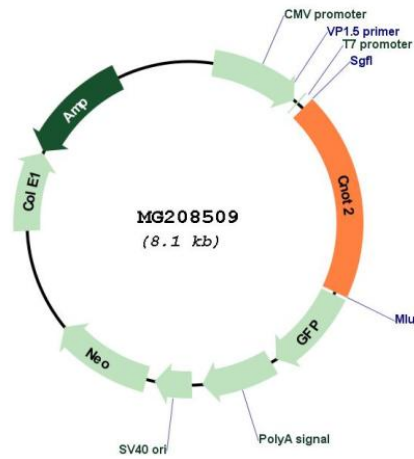
Sgfl-Mlul

Cloning Scheme:

Cloning sites used for ORF Shutting:



Plasmid Map:



ACCN:	BC063105
ORF Size:	1595 bp
OTI Disclaimer:	The molecular sequence of this clone aligns with the gene accession number as a point of reference only. However, individual transcript sequences of the same gene can differ through naturally occurring variations (e.g. polymorphisms), each with its own valid existence. This clone is substantially in agreement with the reference, but a complete review of all prevailing variants is recommended prior to use. More info
OTI Annotation:	This clone was engineered to express the complete ORF with an expression tag. Expression varies depending on the nature of the gene.
Components:	The ORF clone is ion-exchange column purified and shipped in a 2D barcoded Matrix tube containing 10ug of transfection-ready, dried plasmid DNA (reconstitute with 100 ul of water).
Reconstitution Method:	<ol style="list-style-type: none">1. Centrifuge at 5,000xg for 5min.2. Carefully open the tube and add 100ul of sterile water to dissolve the DNA.3. Close the tube and incubate for 10 minutes at room temperature.4. Briefly vortex the tube and then do a quick spin (less than 5000xg) to concentrate the liquid at the bottom.5. Store the suspended plasmid at -20°C. The DNA is stable for at least one year from date of shipping when stored at -20°C.
RefSeq:	BC063105 , AAH63105
RefSeq Size:	3014 bp
RefSeq ORF:	1595 bp
Locus ID:	72068
Cytogenetics:	10 D2
Gene Summary:	Component of the CCR4-NOT complex which is one of the major cellular mRNA deadenylases and is linked to various cellular processes including bulk mRNA degradation, miRNA-mediated repression, translational repression during translational initiation and general transcription regulation. Additional complex functions may be a consequence of its influence on mRNA expression. Required for the CCR4-NOT complex structural integrity. Can repress transcription and may link the CCR4-NOT complex to transcriptional regulation; the repressive function may specifically involve the N-Cor repressor complex containing HDAC3, NCOR1 and NCOR2. Involved in the maintenance of embryonic stem (ES) cell identity; prevents their differentiation towards extraembryonic trophectoderm lineages. [UniProtKB/Swiss-Prot Function]