

Product datasheet for **MG208482**

1200003I07Rik (BC063330) Mouse Tagged ORF Clone

Product data:

Product Type:	Expression Plasmids
Product Name:	1200003I07Rik (BC063330) Mouse Tagged ORF Clone
Tag:	TurboGFP
Symbol:	1200003I07Rik
Synonyms:	1200003I07Rik
Mammalian Cell Selection:	Neomycin
Vector:	pCMV6-AC-GFP (PS100010)
E. coli Selection:	Ampicillin (100 ug/mL)



[View online »](#)

ORF Nucleotide Sequence:

>MG208482 representing BC063330
 Red=Cloning site Blue=ORF Green=Tags(s)

TTTTGTAATACGACTCACTATAGGGCGGCCGGAATTCGTCGACTGGATCCGGTACCGAGGAGATCTGCC
 GCC**CGGATCGCC**

ATGGAGGCAGCCATTGTTGGACTCTCCAGGCCTGATGAGGGTTTGGTGAAGCTTTGAGGATCTGGTGGTGC
 ACTTCACCCAGGATGAGTGGGATTTGCTGGCTCCTTCTCAGAAGACTCTTACGGAGATGTGATGCTGGA
 GACCTTCAGAACTTCACTGCCGTAGGATATGAATGGGAAGATGAGGCAATTGAAGACCATTGTGAAGAT
 CCTGAAGTAAATCTAAGGAACATCGTCACTCACTCTGAATACACACAGTATGAACACGAGGAATATGAAG
 AGAAGCCACCTGATTCTAATTTTCTCACAAGTGTGAAGGCCCTTGAGGAACTAAGACTTCGAGTGGACC
 ATCTGTGTGTGAGGTATGTTAAAGACCTTTGGACTGTACCACCTAACTTACAACGGACATCACAACAT
 GACTACAAGGAGCTCAGAGGAGGCCACACTGAAGAAAATGATTCTGAAGGTAACCACTGTGAGAAAACCT
 CCGGTTCCCTTCAGAAAGAAGACAAAATTCATACTGGAAAAAACTCTATGTGTGTCAAGAGTGTGGTAA
 AGCCTTTAGGTATCCCAGCGCCCTTCAGTTACATGAAAGAATTCATACTGGAGAAAAACCTACGAGTGT
 AAAGACTGTGGAAAGCCCTTAGAGGTCTTAGCGCCCTCACTTACATGAAAGAATCCATACTGGAGAAA
 AACCTACGAGTGAAGCAGTGTGGGAGAGCCTTACGATATCTCAGTGCTCTTCAGTTGCATGAAAGAAT
 TCACACTGAGGAGAGGCCCTGTGAGTGTAAACAGTGTGGGAAAACCTTTAGATATAGCAGGGCCCTCAA
 TTACATGAAAGAATTCATACCGGAGAGAAGCCCTATGAATGTAACAATGTGGGAAATTTTTCAGAAGTC
 ACAGGACCCCTTAAGTTACATAAAAGAATTCATACTGGAGAAAAACCTATGAGTGTAAAGAATGTGGAA
 AGCTTTTATAGTGGCTTACTTCTGAAGTTACATGAAAAGATTACTGAGGAAAAACCGTATGAATGC
 CAAGAGTGTGGAAAGCCCTTCAGGTGTCAGGCGTCCTATCATAGACATAAAATAACTCATGGTGGAGAAA
 CATTGTATGAATGTAAGGAGTGTGGGAAGTCCTTCAATTTATCCCTTTTACTTCAAGTGCATGAAAGA
 TCACACTGGTGAAGCCCTTTGAGTGTAAAGCTCTGCGGTAAAGCCCTTAGGTGTGAGTCCCTCGCTTCGA
 CTGCACGAGAGAACACACACAGGAGAAAAACCTATGAGTGTAAAGCACTGTGGCAAGCCCTTTTCAAGT
 ACAATTACCTTCGATTTACGAACGAAGCCACACTGGAGAGAAAACCTATGAATGTAAGGAGTGTGGTAA
 AACTTTACACATCGCTTTACCTTCGATCACATGAAAGAAGACATACTGGGAGAAAGCCGTACCACTGC
 GGACAGTGTGGCAGATCCTTCAGCAGGCACAGTTCCTTTAAGAGACATCAGTCACTCATGGAGAAAGCC
 CATATGAACAGTATCTAATTCATTATCCCATTTCTTCAAAGGAA

ACGCGTACGCGGCCGCTCGAG – GFP Tag – GTTTAA

Protein Sequence:

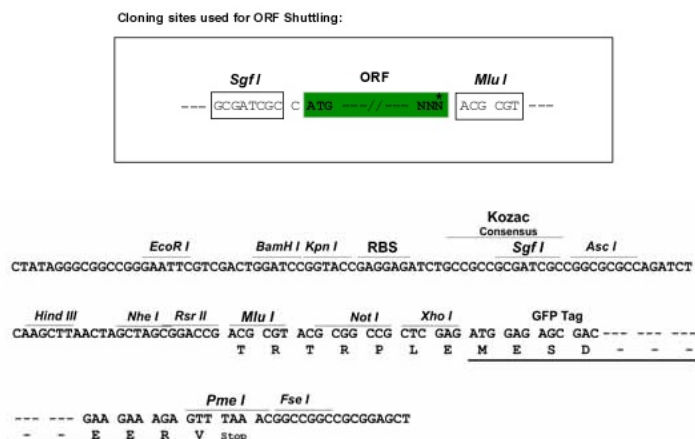
>MG208482 representing BC063330
 Red=Cloning site Green=Tags(s)

MEAAIVGLSRPDEGLVSFEDLVVHFTQDEWDLAPSQKTLYGDVMLETFRNFTAVGYEWEDAIEDHCE
 PEVNLRNIVTHSEYTYEHEEYEEKPPDSNFLTSVEGLEETKTSVSGPSVCEVCLKTFGLYHLTYNGHHNY
 DYKELRGGHTEENDSEGNQCEKTSGLQKEDKIHTGKKLYVCQECGKAFRYPALQLHERIHTGEKPYEC
 KDCGKAFRGLSALHLHERIHTGEKPYECKQCGRAFTYLSALQLHERIHTTEERPCECKQCGKTFRYSRALK
 LHERIHTGEKPYECKQCGKFFRSHRTLKHKRIHTGEKPYECKEKGAFRWLTSLLKHEKIHTGEKPYEC
 QECGKAFRCQASYHRHKITHGGETLYECKEKGKSFYPSLLQVHERHTGEKPFCKLQCGAFRCQSSLR
 LHERHTGEKPYECKHCGKAFSSYNLRFHERSHTGEKPYECKEKGKTFTHRSYLRSHERHTGEKPYQC
 GQCGRSFSRHSSFKRHQSVHGESPYEQLIPLSPFPSKE

TRTRPLE – GFP Tag – V

Restriction Sites:

Sgfl-MluI

Cloning Scheme:


ACCN: BC063330

ORF Size: 1589 bp

OTI Disclaimer: The molecular sequence of this clone aligns with the gene accession number as a point of reference only. However, individual transcript sequences of the same gene can differ through naturally occurring variations (e.g. polymorphisms), each with its own valid existence. This clone is substantially in agreement with the reference, but a complete review of all prevailing variants is recommended prior to use. [More info](#)

OTI Annotation: This clone was engineered to express the complete ORF with an expression tag. Expression varies depending on the nature of the gene.

Components: The ORF clone is ion-exchange column purified and shipped in a 2D barcoded Matrix tube containing 10ug of transfection-ready, dried plasmid DNA (reconstitute with 100 ul of water).

Reconstitution Method:

1. Centrifuge at 5,000xg for 5min.
2. Carefully open the tube and add 100ul of sterile water to dissolve the DNA.
3. Close the tube and incubate for 10 minutes at room temperature.
4. Briefly vortex the tube and then do a quick spin (less than 5000xg) to concentrate the liquid at the bottom.
5. Store the suspended plasmid at -20°C. The DNA is stable for at least one year from date of shipping when stored at -20°C.

RefSeq: [BC063330](#)

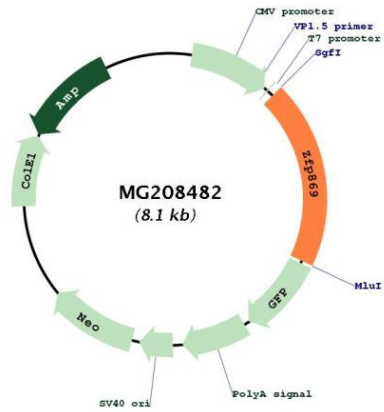
RefSeq Size: 4671 bp

RefSeq ORF: 1589 bp

Locus ID: 66869

Cytogenetics: 8 B3.3

Product images:



Circular map for MG208482