

Product datasheet for **MG208473**

Lad1 (NM_133664) Mouse Tagged ORF Clone

Product data:

Product Type:	Expression Plasmids
Product Name:	Lad1 (NM_133664) Mouse Tagged ORF Clone
Tag:	TurboGFP
Symbol:	Lad1
Synonyms:	lad-1; LADA
Mammalian Cell Selection:	Neomycin
Vector:	pCMV6-AC-GFP (PS100010)
E. coli Selection:	Ampicillin (100 ug/mL)



[View online »](#)

ORF Nucleotide Sequence:

>MG208473 representing NM_133664
 Red=Cloning site Blue=ORF Green=Tags(s)

TTTTGTAATACGACTCACTATAGGGCGGCCGGAATTCGTCGACTGGATCCGGTACCGAGGAGATCTGCC
 GCC**CGCATCGCC**

ATGTCGGTCAGCAGAAAGGACTGGTCCGCGCTGTCCAGCCTTGCCCGACAGCGGACTTTGGAGGACGAAG
 AGGAGCAGGAGCGGAAACGCAGGCGGAGGCACCGCAACCTGAGTTCAACACAGATGATGAATCTCCAAA
 ACTCACCCAGAATGGAGCTCAGAGATCTGTGGAGAGGCTGCCAGTGTGGAGGAAGCAGAGGTCTCTAAG
 CCATCGCCCCAGCCTCCAAAGATGAAGATGAAGACTTCCAGGCCATCCTTAGGACCAGAAAAGGAGCGGA
 GACAGAGGCGGCAGGTGGTAGAGGCTGTCCAGGCTCCAGTACAGGAGAGGCCAGAGGCAGAGGAGGAAAAG
 AGACAGCCTGGGCCCTGAGCAGACCTCGTCACAGCCCCTTGTGCCTAAGAAGAAAGTGGAGGCCCTGCCT
 CGCCGGAGACTGAGTCGGGAGCAGAGAGGCCCTTGGGCCAGGACGAAGAAGCCCTAAAGAACAGAGAGC
 TTGCGGAAGGAGAAAAGAGGCTTCCAGAAGAGACGGTGGCTCAGCAGAAGACCTTGGTCTCTGAGAAAAC
 GCCTGTCTCAGAGAAGACCCAGTGCCTGCCAAAAGACTGGTTTCTGAGAAAGCCTGCCCTCAGAGAAG
 GGGACAGCCACAGAGAAAGCGTCTCTGACTGAGAAAAGACATAGCCCAGAGAAGTTGGTTCCAGAAAAAA
 CAAGTGTGACAGAGAAGTACCAGTCCCTGAGAAGACGCTTGTGTCTCTGAAGACGGCAGCACCAGAGAG
 AAGTCCCTCCAGTTCTAGAAAAGCCATCGTCTCAGAGAAGATGCAGGAGAGGAAGCTGGTGTGCGGAG
 AAAGCATCCATCTTTGAGAAGTCACTAGTCTCAGAGGCAAAGCTGACGCCAAAGAAGGCAGCAGTGTGAG
 AGCAGCCCCAGACCCTGGGGAAAGCCAGGCCACCACGAGGGAGCCCAGAGGAAGGGCCCTCCCTGACAA
 GAGCCCACCTTCTTGCAGAGCAGAGCACACCAGCCCCGCCGACCAAAGCCTCTCGTTTCCACCCATC
 ACACCTCAGGTGAAAATCCAGCAAGGATGAAGATGCAGACACACCTTACCCACCTGCTCACCTACA
 GCAGTCCCTCAAACGCTCCAGCCCCAGGACCATCTCCTTCCGGATGAGCCCCAGGAAAGACAACCTCAGA
 AACACCCTTAACCCGAGTGCCAGCGTGAGGCTGCCGGCTAGCACCGTCAAGCTAGGGGAGAAAAGTGGAG
 AGATACCACACAGCCATCCAGAGGTCAGAAATCCGTCAGGTCTCCAGGCTCCTCCCGTACTGAAGTCTTG
 TCACACCTGCCGGTGTAGCCAGCAAGCGACACCTTTTGAAGAGGAGCTGTGAGGCCAGAACCGCACAGA
 ACCAACCTCCATCCGAAAGGAGAATCTGCGTCTGTGAGGGTCTGACATCAAGACTTAACCTGTGGATC
 AGCAAGACCCAGGATTCGGGAGACCAGGTTCTCAGGAGGTACGGAAAGAGGCATCAGTACCAAGAGGG
 CTAATGGGAAGCAAGCCGTCCACATCCCTGGATGCAGAGGTG

ACGCGTACGCGGCCGCTCGAG - GFP Tag - GTTTAA

Protein Sequence:

>MG208473 representing NM_133664
 Red=Cloning site Green=Tags(s)

MSVSRKDWSSALSSLARQRTLEDEEEQERERRRRHRNLSSTTDDDESPKLTQNGAQRVSVERLPSVEEAEVSK
 PSPPASKDEDEDFAQILRTRKERRRRQVVEAVQAPVQERPEAEERDSLGPQTSQPLVPKKKVEALP
 RRRRLSREQRGPWAQDEERLKNRELAEGEKRLPEETVAQQKTLVSEKTPVSEKTPVPAKRLVSEKACPSEK
 GTATEKASLTEKRHSPEKLVPEKTSVTEKSPVPEKTLVSLKTAAPERRSPPVLEKAIVSEKMQRKLVSE
 KASIFEKSLVSEAKLTPKKAHVSEQPQTGGSQATTREPRGRALPDKSPPSSAEQSTPAPPTKASRFPI
 TLQVKIPSKDEDADTPSPTLLTYSSSLKRSSPRTISFRMSPRKDNSETPLTRSASVRLPASTVKLGEKLE
 RYHTAIQRSESVRSPGSSRTEVLVTPAGVASKRHLFEKELSGQNRTEPTSIRKENLRLSGVVT SRLNLWI
 SKTQDSGDHGSQEVKREASVTKRAQWQSKPSTSLDAEV

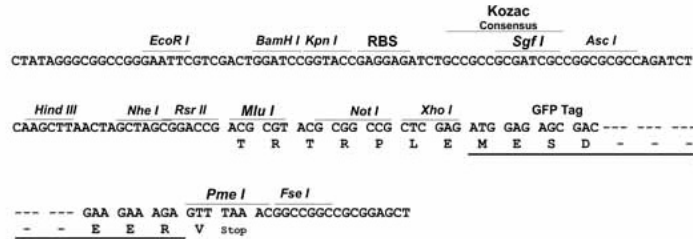
TRTRPLE - GFP Tag - V

Restriction Sites:

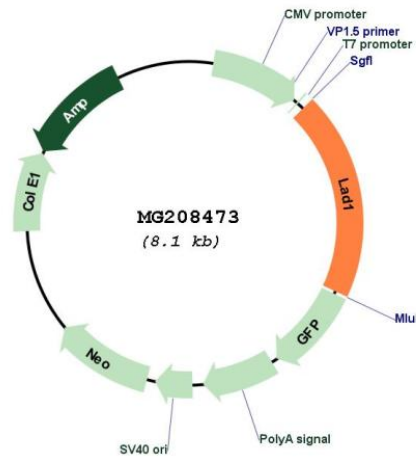
Sgfl-MluI

Cloning Scheme:

Cloning sites used for ORF Shutting:



Plasmid Map:



ACCN:	NM_133664
ORF Size:	1584 bp
OTI Disclaimer:	The molecular sequence of this clone aligns with the gene accession number as a point of reference only. However, individual transcript sequences of the same gene can differ through naturally occurring variations (e.g. polymorphisms), each with its own valid existence. This clone is substantially in agreement with the reference, but a complete review of all prevailing variants is recommended prior to use. More info
OTI Annotation:	This clone was engineered to express the complete ORF with an expression tag. Expression varies depending on the nature of the gene.
Components:	The ORF clone is ion-exchange column purified and shipped in a 2D barcoded Matrix tube containing 10ug of transfection-ready, dried plasmid DNA (reconstitute with 100 ul of water).
Reconstitution Method:	<ol style="list-style-type: none">1. Centrifuge at 5,000xg for 5min.2. Carefully open the tube and add 100ul of sterile water to dissolve the DNA.3. Close the tube and incubate for 10 minutes at room temperature.4. Briefly vortex the tube and then do a quick spin (less than 5000xg) to concentrate the liquid at the bottom.5. Store the suspended plasmid at -20°C. The DNA is stable for at least one year from date of shipping when stored at -20°C.
RefSeq:	NM_133664.3
RefSeq Size:	2993 bp
RefSeq ORF:	1587 bp
Locus ID:	16763
UniProt ID:	P57016
Cytogenetics:	1 E4
Gene Summary:	Anchoring filament protein which is a component of the basement membrane zone. [UniProtKB/Swiss-Prot Function]