

Product datasheet for **MG208464**

Hexa (NM_010421) Mouse Tagged ORF Clone

Product data:

Product Type:	Expression Plasmids
Product Name:	Hexa (NM_010421) Mouse Tagged ORF Clone
Tag:	TurboGFP
Symbol:	Hexa
Synonyms:	Hex-1
Mammalian Cell Selection:	Neomycin
Vector:	pCMV6-AC-GFP (PS100010)
E. coli Selection:	Ampicillin (100 ug/mL)



[View online »](#)

ORF Nucleotide Sequence:

>MG208464 representing NM_010421
 Red=Cloning site Blue=ORF Green=Tags(s)

TTTTGTAATACGACTCACTATAGGGCGGCCGGAATTCGTCGACTGGATCCGGTACCGAGGAGATCTGCC
 GCC**CGCATCGCC**

ATGGCCGGCTGCAGGCTCTGGGTTTCGCTGCTGCTGGCGCGCGGTTGGCTTGCTTGGCCACGGCACTGT
 GGCCGTGGCCCCAGTACATCCAAACCTACCACCGCGCTACACCCTGTACCCCAACAACCTCCAGTCCG
 GTACCATGTCAGTTCGGCCGCGCAGGCGGGCTGCGTCGTCTCGACGAGGCCCTTCGACGCTACCGTAAC
 CTGCTCTTCGGTCCGGCTCTGGCCCCGACCCAGCTTCTCAAATAAACAGCAAACGTTGGGAAGAACA
 TTCTGGTGGTCTCCGTCGTACAGCTGAATGTAATGAATTTCTAATTTGGAGTCGGTAGAAAATTACAC
 CCTAACCATTAATGATGACCAGTGTACTCGCCTCTGAGACTGTCTGGGGCGCTCTCCGAGGTCTGGAG
 ACTTTCAGTCAGCTTGTGGAAATCAGCTGAGGGCACGTTCTTATCAACAAGACAAAGATTAAGACT
 TTCTCGATTCCCTCACCAGGGCGTACTGCTGGATACATCTCGCCATTACCTGCCATTGTCTAGCATCCT
 GGATACACTGGATGTCATGGCATACAATAAATCAACGTGTTCCACTGGCACTTGGTGGACGACTCTTCC
 TTCCCATATGAGAGCTTCACTTTCCAGAGCTCACCAGAAAGGGGCTCTCAACCCTGCTACTCACATCT
 ACACAGCACAGGATGTGAAGGAGGTCATTGAATACGCAAGGCTTCGGGGTATCCGTGTGCTGGCAGAATT
 TGACACTCCTGGCCACACTTTGTCCTGGGGGCCAGGTGCCCTGGGTTATTAACACCTTGCTACTCTGGG
 TCTCATCTCTGGCACATTTGGACCGGTGAACCCAGTCTCAACAGCACCTATGACTTCATGAGCACAC
 TCTTCTGGAGATCAGCTCAGCTTCCCGGACTTTTATCTCCACTGGGAGGGATGAAGTCGACTTCAC
 CTGCTGGAAGTCAACCCCAACATCCAGGCTTCAAGAAAAGGGCTTTACTGACTTCAAGCAGCTG
 GAGTCTTCTACATCCAGACGCTGCTGGACATCGTCTGATTATGACAAGGGCTATGTGGTGTGGCAGG
 AGGTATTTGATAATAAAGTGAAGTTTCGGCCAGATACAATCATAACAGTGTGGCGGAAGAAATGCCAGT
 AGAGTACATGTTGGAGATGCAAGATATCACCAGGGCTGGCTTCGGGGCCCTGCTGTCTGCTCCCTGGTAC
 CTGAACCGTGTAAAGTATGGCCCTGACTGGAAGGACATGTACAAAGTGGAGCCCTGGCGTTTCATGGTA
 CGCCTGAACAGAAGGCTCTGGTATTGGAGGGGAGGCTGTATGTGGGAGAGTATGTGGACAGCACAA
 CCTGGTCCCAGACTCTGGCCAGAGCGGGTCCCGTCGCTGAGAGACTGTGGAGCAGTAACCTGACAAC
 AATATAGACTTTGCCTTTAAACGTTTGTGCGATTTCCGTTGTGAGCTGGTGGAGAGGAATCCAGGCC
 AGCCCATCAGTGTAGGCTACTGTGAGCAGGAGTTTGGAGCAGCT

ACGCGTACGCGGCCGCTCGAG – GFP Tag – GTTTAA

Protein Sequence:

>MG208464 representing NM_010421
 Red=Cloning site Green=Tags(s)

MAGCRLWVSLLLAAALACLATALWPWPQYIQTYHRRYTLYPNNFQFRYHVSSAAQAGCVLDEAFRRYRN
 LLFGSGSWPRPSFSNKQQLGKNILVSVVTAECNEFPNLESVENYTLTINDDQCLLASETVWALRGLE
 TFSQLVWKS AEGTFFINKTKIKDFPRFPHRGVLLDTSRHYLPLSSILDITLDVMAYNKFNVFHWHLVDDSS
 FPYESFTFPELTRKGSFNPVTHIYTAQDVKEVIEYARLRGIRVLAEFDTPGHTLSWGPAPGLLTPCYSG
 SHLSGTFGPVNPVSLNSTYDFMSTLFLEISSVFPDFYHLHGGDEVDFTCWKSNPNIQAFMKKKGFTDFKQL
 ESFYIQTLLDIVSDYDKGYVWVQEVFDNKVVRPDTIIQVWREEMPVEYMLEMQDITRAGFRALLSAPWY
 LNRVKYGPDWKDMYKVEPLAFHGTPEQKALVIGGEACMWGEYVDSTNLVPRWPRAVAERLWSSNLTT
 NIDFAFKRLSHFRCELVRRGIQAQPI SVGYCEQEFEQT

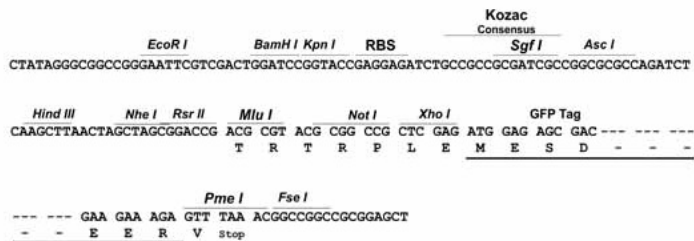
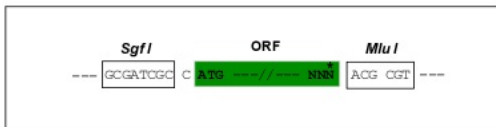
TRTRPLE – GFP Tag – V

Restriction Sites:

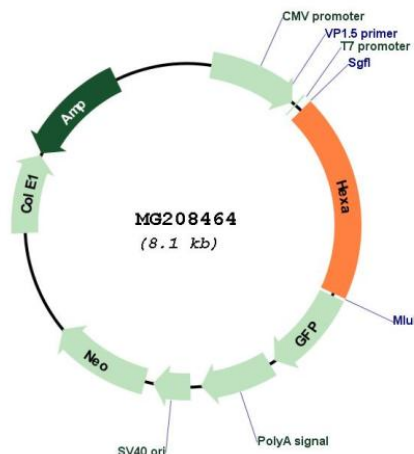
Sgfl-Mlul

Cloning Scheme:

Cloning sites used for ORF Shutting:



Plasmid Map:



ACCN:	NM_010421
ORF Size:	1584 bp
OTI Disclaimer:	The molecular sequence of this clone aligns with the gene accession number as a point of reference only. However, individual transcript sequences of the same gene can differ through naturally occurring variations (e.g. polymorphisms), each with its own valid existence. This clone is substantially in agreement with the reference, but a complete review of all prevailing variants is recommended prior to use. More info
OTI Annotation:	This clone was engineered to express the complete ORF with an expression tag. Expression varies depending on the nature of the gene.
Components:	The ORF clone is ion-exchange column purified and shipped in a 2D barcoded Matrix tube containing 10ug of transfection-ready, dried plasmid DNA (reconstitute with 100 ul of water).
Reconstitution Method:	<ol style="list-style-type: none">1. Centrifuge at 5,000xg for 5min.2. Carefully open the tube and add 100ul of sterile water to dissolve the DNA.3. Close the tube and incubate for 10 minutes at room temperature.4. Briefly vortex the tube and then do a quick spin (less than 5000xg) to concentrate the liquid at the bottom.5. Store the suspended plasmid at -20°C. The DNA is stable for at least one year from date of shipping when stored at -20°C.
RefSeq:	NM_010421.5
RefSeq Size:	1866 bp
RefSeq ORF:	1587 bp
Locus ID:	15211
UniProt ID:	P29416
Cytogenetics:	9 32.02 cM
Gene Summary:	This gene encodes a member of the glycosyl hydrolase 20 family of proteins. The encoded preproprotein is proteolytically processed to generate the alpha subunit of the lysosomal enzyme beta-hexosaminidase. This enzyme, together with the cofactor GM2 activator protein, catalyzes the degradation of the ganglioside GM2, and other molecules containing terminal N-acetyl hexosamines. Mice lacking the encoded protein exhibit accumulation of gangliosides in the brain and membranous cytoplasmic bodies in neurons. Certain mutations in the human ortholog of this gene cause Tay-Sachs disease. [provided by RefSeq, Aug 2016]