

## Product datasheet for **MG208447**

### **Pole2 (NM\_011133) Mouse Tagged ORF Clone**

#### **Product data:**

Product Type:	Expression Plasmids
Product Name:	Pole2 (NM_011133) Mouse Tagged ORF Clone
Tag:	TurboGFP
Symbol:	Pole2
Mammalian Cell Selection:	Neomycin
Vector:	pCMV6-AC-GFP (PS100010)
E. coli Selection:	Ampicillin (100 ug/mL)



[View online »](#)

**ORF Nucleotide Sequence:**

>MG208447 representing NM\_011133  
 Red=Cloning site Blue=ORF Green=Tags(s)

TTTTGTAATACGACTCACTATAGGGCGGCCGGAATTCGTCGACTGGATCCGGTACCGAGGAGATCTGCC  
 GCC**CGCATCGCC**

ATGGCGCCGAGCGGCTGCGGAGCCGACGGTCTCAGCTTCAAGCTGCGGGCTTGTCTCAGGAGTG  
 AAGCCACCAAGTATCTGACTGAAGCTCTCCAGTCTGTCACTGAATTGGAGCTAGAGGAGAACCTAGGAAA  
 GATCATCGATGCAGTTGAAAAGCAGCCCTTGTCTCGAACATGATCGAACGATCTGTCGTGGAGGACGT  
 GTGCAAGAGTGCAGTCACTGTGGATGAGACTATAGAGCACGTTTTCAATATCATTGGAGCTTTTGATA  
 TTCCACGTTTTATATAAATTCAGAAAGGAAAAATTTCTTCTCTATCCATGACTAATCATGCTGCACC  
 AACCTATTTGGAACAGCAAGAGACAAAGCCGAGCTGTATCTTGAACGCTATACCATTTACACCAGAGG  
 ACACACAGACATGAATTGTTCACTCCTCCGGTATAGGCTCACACCTGAAGAAAGTGGGAGCAAGTTCC  
 AGCTTAAACTATAGAAACCTTACTGGTAGCACAAGCAAAGTTGGTACGATGATCGTCTGGGATGAT  
 AACCCAGCTGAAAGAGGGGAAGTTTTCTGGAAGATCCTACTGGAACAGTACAACCTGGACCTTAGTAAA  
 GCTCAGTTCACAGTGGCTTATACACCGAGGCCTGCTTCTGCTGGCAGAAGGTTGGTTTGAAGTCAAG  
 TGTTTTACGCCAATGCCTTTGGATTTCTCCCACTGAGCCCTCCAGCACCACAAGGGCGTACTATGGAAA  
 TATTAATTTTTTTGGAGGGCCTTCTAATGCATCAGTGAAGACGTATACAAAGCTGAGACAGCTGGAAGAT  
 GAGAACAAGGACGCCATGTTTGTGATTGTGTCTGATGTTGGTTGGACCAAGTGAAGTGTGGAGAAGT  
 TTCATGTAATGTTTTCTGGTTACTCGCCAGCACCTCCAACCTGCTTATTTCTGTGTGTAATTTTTTCATC  
 TGCACCATATGGAAAAATCAAGTCCAGGCTTTGAAAGATTCCCTAAAATCTTTGGCAGACATAATATGT  
 GAATATCCAAGTATCCACCAAAGTAGCCGTTTTGTGTTGTGCTGGCCAGAGGATCCTGGATTTGGTT  
 CCATTTTACCAAGGCCCACTCGTGAAGCATCACACAGGAATTCAGACAAAGGTTCCGTTTTTCAGT  
 TTTACAGACTAATCCTTGCAGAATTCAGTATTGTACACAAGAAATAATTATCTTCCGTGAAGACTTAGTG  
 AATAAAATGTGTAGAAACTGTGTCGTTTTCTAGCAGCAGTTTGGATATTCCTACTCACTTCGTAAGA  
 CCATCTTATCTCAGGGACATCTGGCTCCTCCTCTTTACGTATGCCCGTCCACTGGGCATATGATTA  
 CACGTTGAGAGTGTACCCGGTGCACCTGCTGGTCAATGCAGACAAGTACGACCCGTTACCCTGACC  
 AACCCGATTGCCTCTGCATAAACCTGGCTCCTTCCAAGAAGTGGATTTGCATTCAAAGTTTTTTACC  
 CTTCCAGTAAAACAGTAGAAGACAGCAAACCTTCAGGGCTTT

**ACGCGTACGCGGCCGCTCGAG** - GFP Tag - GTTTAA

**Protein Sequence:**

>MG208447 representing NM\_011133  
 Red=Cloning site Green=Tags(s)

MAPERLRRTVSAFKLRGLLLRSEATKYLTEALQSVTELELEENLGKIIDAVEKQPLSSNMIERSVVEAA  
 VQECSSQVDEIEHVFNIIIGAFDIPRFIYNSEKFLPLSMTNHAAPTLFGTARDKAELYLERYTILHQR  
 THRHELFPPVIGSHLEESGSKFQLKTIETLLGSTSKVGDVIVLGMITQLKEGKFFLEDPTGTVQLDLSK  
 AQFHSGLYTEACFVLAEGWFEDQVFHANAFGFPPTPEPSTTRAYYGNINFFGGPSNASVKTYTKLRQLED  
 ENKDAMFVIVSDVWLDQVQVLEKFHVMFSGYSPAPPTCFILCGNFSSAPYGNQVQALKDSLKSLADIIC  
 EYPSIHQSSRFVFPVGPEDPFGFSILPRPPLAESITQEFRQRPVFPVFTTNPRIQYCTQEIIIFREDLV  
 NKMCRCNVRFPSSSLDIPHFVKIILSQGHLAPLPLVYCPVHWAYDYTLRYPVPDLLVIADKYDPFTVT  
 NTDCLINPGSFPRSGFAFKVFYPSSKTVEDSKLQGF

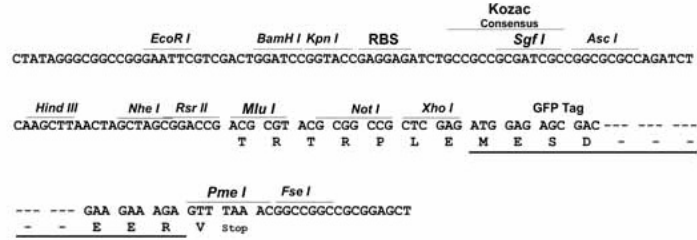
**TRTRPLE** - GFP Tag - V

**Restriction Sites:**

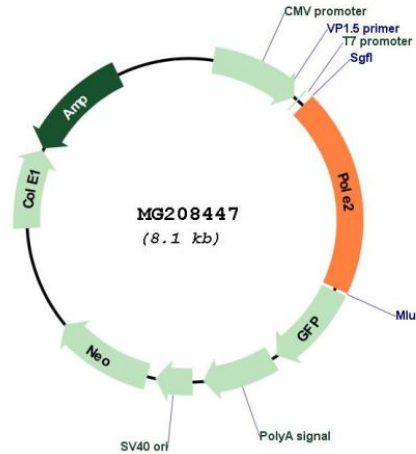
Sgfl-MluI

Cloning Scheme:

Cloning sites used for ORF Shutting:



Plasmid Map:



<b>ACCN:</b>	NM_011133
<b>ORF Size:</b>	1581 bp
<b>OTI Disclaimer:</b>	The molecular sequence of this clone aligns with the gene accession number as a point of reference only. However, individual transcript sequences of the same gene can differ through naturally occurring variations (e.g. polymorphisms), each with its own valid existence. This clone is substantially in agreement with the reference, but a complete review of all prevailing variants is recommended prior to use. <a href="#">More info</a>
<b>OTI Annotation:</b>	This clone was engineered to express the complete ORF with an expression tag. Expression varies depending on the nature of the gene.
<b>Components:</b>	The ORF clone is ion-exchange column purified and shipped in a 2D barcoded Matrix tube containing 10ug of transfection-ready, dried plasmid DNA (reconstitute with 100 ul of water).

**Reconstitution Method:**

1. Centrifuge at 5,000xg for 5min.
2. Carefully open the tube and add 100ul of sterile water to dissolve the DNA.
3. Close the tube and incubate for 10 minutes at room temperature.
4. Briefly vortex the tube and then do a quick spin (less than 5000xg) to concentrate the liquid at the bottom.
5. Store the suspended plasmid at -20°C. The DNA is stable for at least one year from date of shipping when stored at -20°C.

**RefSeq:** [NM\\_011133.1](#), [NP\\_035263.1](#)

**RefSeq Size:** 1697 bp

**RefSeq ORF:** 1584 bp

**Locus ID:** 18974

**UniProt ID:** [O54956](#)

**Cytogenetics:** 12 C2

**Gene Summary:** Participates in DNA repair and in chromosomal DNA replication.[UniProtKB/Swiss-Prot Function]