

## Product datasheet for **MG208437**

### **Pfkfb3 (BC052400) Mouse Tagged ORF Clone**

#### **Product data:**

Product Type:	Expression Plasmids
Product Name:	Pfkfb3 (BC052400) Mouse Tagged ORF Clone
Tag:	TurboGFP
Symbol:	Pfkfb3
Synonyms:	E330010H22, iPFK-2
Mammalian Cell Selection:	Neomycin
Vector:	pCMV6-AC-GFP (PS100010)
E. coli Selection:	Ampicillin (100 ug/mL)



[View online »](#)

**ORF Nucleotide Sequence:**

>MG208437 representing BC052400  
 Red=Cloning site Blue=ORF Green=Tags(s)  
 TTTTGAATACGACTCACTATAGGGCGGCCGGAATTCGTCGACTGGATCCGGTACCGAGGAGATCTGCC  
 GCC**CGCATCGCC**

ATGCCGTTGGAAGTACCCAGAGCCGGGTACAGAAGATCTGGGTGCCCGTCGATACCGACCTCGTTGC  
 CCAGATCTGTGGGCCGAAGCTGACCAACTCCCAACCGTATTGTGATGGTGGGCTCCAGCCGGGG  
 TAAGACTTACATCTCAAGAAGCTGACTCGCTACCTCAACTGGATAGGTGTTCCAACGAAAGTGTTCAAT  
 GTGGGAGAGTATCGCGTGAGGCTGTGAAGCAGTACAGCTTTACAACCTCTCCGCCCTGACAATGAGG  
 AAGCCATGAGAGTCCGAAACAGTGTGCCTTAGCTGCCCTGAGAGATGTCAAAGCTACCTGACAAAGGA  
 AGGTGGACAGATTGCAGTTTTTGTGCCACCAATACAACCTAGAGAAAGAAGGCACATGATCCTTAATTTT  
 GCCAAAGAAAATGACTTCAAGGCATTTTTTCATCGAGTCGGTCTGTGACGACCTACTGTTGTGCCCTCCA  
 ACATCATGGAAGTAAAACTCCAGCCCGATTACAAAGACTGCAACTCAGCAGAAGCCATGGACGACTT  
 CATGAAGAGAATCAATTGCTATGAAGCCAGCTACCAGCCTTTGACCCTGATAAATGTGACAGGGACTTG  
 TCACTCATCAAAGTGATTGATGTTGGCCGGAGGTTCTTGGTGAACAGAGTGCAGGACCACATCCAGAGCC  
 GAATTGTATACTACCTGATGAACATCCAGTGCAGCCCGTACCATCTACCTGTGTGCGCATGGCGAGAA  
 TGAGTACAACCTTGAGGGCAAGATTGGGGGCGACTCAGGCTTGTCCAGCAGAGGCAAGAAGTTCCGCAAT  
 GCCCTGAGCAAGTTCGTAGAAGAACAGAATCTGAAGGACCTCCGTGTGTGGACCAGCCAGCTGAAAAGTA  
 CCATTCAGACCGCGGAGGCCCTGAGGCTCCCCTACGAGCAGTGAAGGCACTCAACGAGATCGATGCTGG  
 TGTGTGTGAGGAACTAACCTATGAGGAGATCAGAGTACCTACCTGAGGAGTACGCACTGCGTGAACAG  
 GACAAGTACTACTATCGCTATCCACCGGAGATCCTACCAGGATCTTGTCCAACGCCTGGAGCCTGTGA  
 TCATGGAATTAGAGCGCCAAGAGAATGTATTGGTCATCTGTACCAGGCTGTTCTACGCTGCTACTAGC  
 CTACTTCTCGACAAGAGTGCAGAGGAGATGCCATACCTGAAATGTCCGCTCCACACTGTCTGAAACTG  
 ACACCTGTGGCATATGGGTGCCGGTGGAGTCCATTTACTTGAATGTAGAATCGGTGAGCACACCCGGG  
 AGAGGTGAGAGGATGCAAAGAAGGGACCTAACCCGCTCATGAGACGCAATAGTGTACCCCACTAGCCAG  
 TCCCGAGCCACCAAAAAGCCTCGCATCAACAGCTTTGAGGAGCGTGTGGCTTCCACTTCTGCTGCCCTG  
 CCAAGCTGCTGCCCCCGAAGTGCCACGCAGCTGCCCGACAACCTTTGCTAGGGAAAGCCTGTCTAC  
 GAAGTGTCTGTACATTTTTTCAAAGTTTTCTCCTTAC

**ACGCGTACGCGGCCGCTCGAG - GFP Tag - GTTTAA**

**Protein Sequence:**

>MG208437 representing BC052400  
 Red=Cloning site Green=Tags(s)  
 MPLELTQSRVQKIWVPVDHRPSLPRSCGPKLTNSPTVI VMVGLPARGKTYISKLLTRYLNWIGVPTKVFN  
 VGEYRREAVKQYSSYNFFRPDNEEAMRVRKQCALAALRDVKSYL TKEGGQIAVFDATNTTRERRHMILNF  
 AKENDFKAFFIESVCDPTVVASNIMEVKISSPDYKDCNSAEAMDDFMKRINCYEASYQPLDPDKDRDL  
 SLIKVIDVGRFRLVNRVQDHIQSRIVYYLMNIHVQPRTIYLCRHGENEYNLQGKIGGDSGLSSRGKFFAN  
 ALSKFVEEQNLKDLRVWTSQLKSTIQTAELRLPYEQWKALNEIDAGVCEELTYEEIRDTYPEEYALREQ  
 DKYYYYRYPTGESYQDLVQRLEPVMELERQENLVICHQAVLRCLLAYFLDKSAEEMPYLKCPLHTVLKL  
 TPVAYGCRVESIYLNVESVSTHRERSEDAKKGPNPLMRRNSVTPLASPEPTKKPRINSFEERVASTSAAAL  
 PSCLPPEVPTQLPGQPLLGKACLRSVCHIFSKFSPY

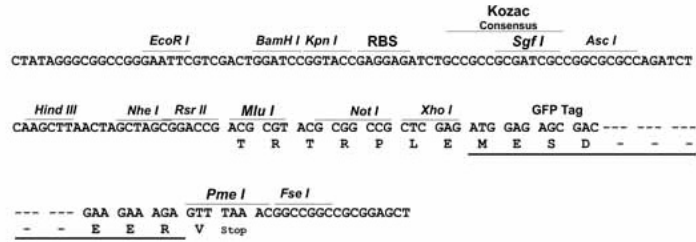
**TRTRPLE - GFP Tag - V**

**Restriction Sites:**

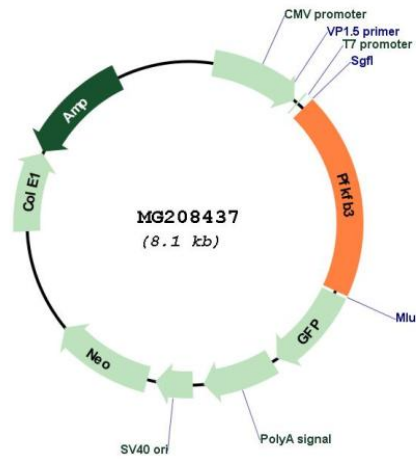
Sgfl-Mlul

Cloning Scheme:

Cloning sites used for ORF Shutting:



Plasmid Map:



<b>ACCN:</b>	BC052400
<b>ORF Size:</b>	1580 bp
<b>OTI Disclaimer:</b>	<p>Due to the inherent nature of this plasmid, standard methods to replicate additional amounts of DNA in E. coli are highly likely to result in mutations and/or rearrangements. Therefore, OriGene does not guarantee the capability to replicate this plasmid DNA. Additional amounts of DNA can be purchased from OriGene with batch-specific, full-sequence verification at a reduced cost. Please contact our customer care team at <a href="mailto:custsupport@origene.com">custsupport@origene.com</a> or by calling 301.340.3188 option 3 for pricing and delivery.</p> <p>The molecular sequence of this clone aligns with the gene accession number as a point of reference only. However, individual transcript sequences of the same gene can differ through naturally occurring variations (e.g. polymorphisms), each with its own valid existence. This clone is substantially in agreement with the reference, but a complete review of all prevailing variants is recommended prior to use. <a href="#">More info</a></p>
<b>OTI Annotation:</b>	This clone was engineered to express the complete ORF with an expression tag. Expression varies depending on the nature of the gene.
<b>Components:</b>	The ORF clone is ion-exchange column purified and shipped in a 2D barcoded Matrix tube containing 10ug of transfection-ready, dried plasmid DNA (reconstitute with 100 ul of water).
<b>Reconstitution Method:</b>	<ol style="list-style-type: none"> <li>1. Centrifuge at 5,000xg for 5min.</li> <li>2. Carefully open the tube and add 100ul of sterile water to dissolve the DNA.</li> <li>3. Close the tube and incubate for 10 minutes at room temperature.</li> <li>4. Briefly vortex the tube and then do a quick spin (less than 5000xg) to concentrate the liquid at the bottom.</li> <li>5. Store the suspended plasmid at -20°C. The DNA is stable for at least one year from date of shipping when stored at -20°C.</li> </ol>
<b>RefSeq:</b>	<u>BC052400, AAH52400</u>
<b>RefSeq Size:</b>	4698 bp
<b>RefSeq ORF:</b>	1580 bp
<b>Locus ID:</b>	170768
<b>Cytogenetics:</b>	2 A1