

## Product datasheet for **MG208434**

### Cyp11a1 (NM\_019779) Mouse Tagged ORF Clone

#### Product data:

Product Type:	Expression Plasmids
Product Name:	Cyp11a1 (NM_019779) Mouse Tagged ORF Clone
Tag:	TurboGFP
Symbol:	Cyp11a1
Synonyms:	csc; Cyp11a; Cypxia1; D9Ert411e; P450sc; Sc
Mammalian Cell Selection:	Neomycin
Vector:	pCMV6-AC-GFP (PS100010)
E. coli Selection:	Ampicillin (100 ug/mL)



[View online »](#)

**ORF Nucleotide Sequence:**

>MG208434 representing NM\_019779  
 Red=Cloning site Blue=ORF Green=Tags(s)

TTTTGTAATACGACTCACTATAGGGCGGCCGGAATTCGTCGACTGGATCCGGTACCGAGGAGATCTGCC  
 GCC**CGCATCGCC**

ATGCTGGCTAAAGGACTTCCCTGCGCTCAGTGTGGTCAAAGGCTGCCAACCTTCTGAGCCCTACGT  
 GGCAGGGTCCAGTGTGAGTACTGGAAAGGAGCTGGTACCTCTACTAGCAGTCCTAGGTCCTTCAATGA  
 GATCCCTTCCCCTGGCGACAATGGTTGGCTAAACCTGTACCCTTCTGGAGGGAGAGTGGCACACAGAAA  
 ATCCATTACCATCAGATGCAGAGTTTCCAAAAGTATGGCCCCATTTACAGGGAGAAGCTGGGCACCTTGG  
 AGTCAGTTTACATCGTGGACCCCAAGGATGCGTCGATACTTCTCATGCGAGGGTCCCAACCCGGAGCG  
 GTTCTTGTGCCCCCTGGGTGGCTATCACCAGTATTATCAGAGGCCATTGGGGTCTGTTTAAAGAGT  
 TCAGATGCCTGGAAGAAAGACCGAATCGTCTAAACCAAGAGGTGATGGCGCCTGGAGCCATCAAGAACT  
 TCGTGGCCCTGCTGGAAGGTGTAGCTCAGGACTTCATCAAAGTCTTACACAGACGCATCAAGCAGCAAAA  
 TTCTGAAATTTCTCAGGGGTCACTAGTGTGACCTATTCGGCTTTTCTTTGAGTCCATCAGCAGTGT  
 ATATTTGGGGAGCGCATGGGGATGCTGGAGGAGATCGTGGATCCCAGGCCACGGGTTCAATGCTG  
 TCTACCAGATGTTCCACACCAGTGTCCCATGCTCAACCTGCCTCCAGACTTCTTTCGACTCCTCAGAAC  
 TAAGACCTGGAAGGACCATGCAGCTGCCTGGGATGTGATTTTCAATAAAGCTGATGAGTACACCCAGAAC  
 TTCTACTGGGACTTAAGGCAGAAGCGAGACTTCAGCCAGTACCCTGGTGTCTTTATAGCCTCCTGGGG  
 GCAACAAGCTGCCCTTCAAGAACATCCAGGCCAACATTACCGAGATGCTGGCAGGAGGGGTGGACACGAC  
 CTCCATGACCTGCAGTGAACCTTTATGAGATGGCACACAATTGAAGGTACAGGAGATGCTGCGGGCT  
 GAAGTCTGGCTGCCCGGCCAGGCCAGGGAGACATGGCCAAGATGGTACAGTTGGTTTCACTCCTCA  
 AAGCCAGCATCAAGGAGACTGAGACTCCACCCATCTCCGTGACCTTGAGAGTACACTGTGAATGA  
 CCTGGTGTCTCGTAATTACAAGATTCAGCCAAGACTTTGGTACAGGTGGCTAGCTTTGCCATGGGTGCA  
 GATCCGGGCTTCTTCCAAATCCAAACAAGTTGACCCAACCTCGTTGGCTGGAAAAAGCCAAAATACCA  
 CCCACTCCGGTACTTGGGCTTTGGCTGGGGTGTTCGGCAGTGTCTGGCCGGCGGATTGCGGAGCTGGA  
 GATGACCATCCTCTTATCAATCTGCTGGAGAACTTCAGAATTGAAGTTCAAAATCTCCGTGATGTGGG  
 ACCAAGTTCAGCCTCATCTGATGCCTGAGAACCCATCCTCTTCAACTCCAGCCTCTCAAGCAGGACC  
 TGGGCCAGCCGTGACCAGAAAAGACAACACTGTGAAC

**ACGCGTACGCGGCCGCTCGAG** - GFP Tag - GTTTAA

**Protein Sequence:**

>MG208434 representing NM\_019779  
 Red=Cloning site Green=Tags(s)

MLAKGLSLRSVLVKGCQPFLSPTWQGPVLSTGKAGTSTSSPRSFNEIPSPGDNGWLNLYHFWRESGTQK  
 IHYHQMSFQKYGPIYREKLGTLQSVYIVDPKASILFSCGPNPERFLVPPWVAYHQYYQRPVGLFKS  
 SDAWKDRIVLNQEVMAPGAIKNFVPLLEGVAQDFIKVLHRRIKQNSGNFSGVISEDLLFRFSFESSV  
 IFGERMGMLEEIVDPEAQRFINAVYQMFHTSVPMLNLPDFRLLRKTWKDHAAAWDVIFNKADYEYTN  
 FYWDLRQKRDFSQYPGVLYSLLGGNKLFPKNIQANITEMLAGGVDTTSMTLQWNL YEMAHNLKVQEMLRA  
 EVLAARRQAQGDMAKMQVLSLLKASIKETLRHLPI SVTLQRYTVNDL VLRNYKIPAKTLVQVASFAMGR  
 DPGFFPNPNKFDPTRWLEKSQNTTHFRYLGFGWVGRQCLGRRIAELEMTILLINLLENFRIEVQNLRDVG  
 TKFSLILMPENPILFNFQPLKQDLGPAVTRKDNTVN

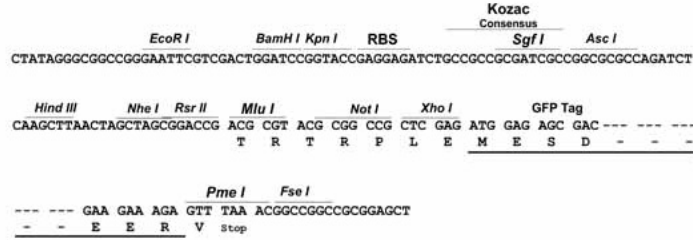
**TRTRPLE** - GFP Tag - V

**Restriction Sites:**

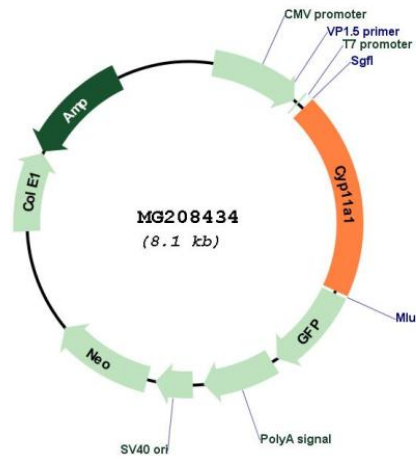
Sgfl-MluI

Cloning Scheme:

Cloning sites used for ORF Shutting:



Plasmid Map:



<b>ACCN:</b>	NM_019779
<b>ORF Size:</b>	1578 bp
<b>OTI Disclaimer:</b>	The molecular sequence of this clone aligns with the gene accession number as a point of reference only. However, individual transcript sequences of the same gene can differ through naturally occurring variations (e.g. polymorphisms), each with its own valid existence. This clone is substantially in agreement with the reference, but a complete review of all prevailing variants is recommended prior to use. <a href="#">More info</a>
<b>OTI Annotation:</b>	This clone was engineered to express the complete ORF with an expression tag. Expression varies depending on the nature of the gene.
<b>Components:</b>	The ORF clone is ion-exchange column purified and shipped in a 2D barcoded Matrix tube containing 10ug of transfection-ready, dried plasmid DNA (reconstitute with 100 ul of water).
<b>Reconstitution Method:</b>	<ol style="list-style-type: none"><li>1. Centrifuge at 5,000xg for 5min.</li><li>2. Carefully open the tube and add 100ul of sterile water to dissolve the DNA.</li><li>3. Close the tube and incubate for 10 minutes at room temperature.</li><li>4. Briefly vortex the tube and then do a quick spin (less than 5000xg) to concentrate the liquid at the bottom.</li><li>5. Store the suspended plasmid at -20°C. The DNA is stable for at least one year from date of shipping when stored at -20°C.</li></ol>
<b>RefSeq:</b>	<a href="#">NM_019779.2</a> , <a href="#">NP_062753.2</a>
<b>RefSeq Size:</b>	1891 bp
<b>RefSeq ORF:</b>	1581 bp
<b>Locus ID:</b>	13070
<b>UniProt ID:</b>	<a href="#">Q9QZ82</a>
<b>Cytogenetics:</b>	9 31.63 cM
<b>Gene Summary:</b>	Catalyzes the side-chain cleavage reaction of cholesterol to pregnenolone, the precursor of most steroid hormones.[UniProtKB/Swiss-Prot Function]