

Product datasheet for **MG208433**

PPP2R3A (BC027415) Mouse Tagged ORF Clone

Product data:

Product Type:	Expression Plasmids
Product Name:	PPP2R3A (BC027415) Mouse Tagged ORF Clone
Tag:	TurboGFP
Symbol:	PPP2R3A
Synonyms:	PP2A B"-PR59; PP2A PR59; PPP2R3; PPP2R3A; PR59
Mammalian Cell Selection:	Neomycin
Vector:	pCMV6-AC-GFP (PS100010)
E. coli Selection:	Ampicillin (100 ug/mL)



[View online »](#)

ORF Nucleotide Sequence:

>MG208433 representing BC027415
 Red=Cloning site Blue=ORF Green=Tags(s)

TTTTGTAATACGACTCACTATAGGGCGGCCGGAATTCGTCGACTGGATCCGGTACCGAGGAGATCTGCC
 GCC**CGGATCGCC**

ATGGCGCCGCTGACGCCGCGCTACAGCTGAAGGTGGACGAGCTCTCCGCGCTGGCTCGGCGATCCTC
 ACACGCAGCGCGCTCAGCCACGCCCTCGCCGCATCCGGGACCCAGGACGACCTCTGACCCCGCCG
 CGCCGCGACCCCGATGCGGACCCCGAAACACGACCTCCGACCCTAACCCCGCCTCCCGACCGCTGCCG
 CGGCCCGCTGAGAACGACGGGACCCAGGACGGTCCATGCCACAGGAAGGAGGAGCCCGCCCGCAGT
 CCCCACCCCTGGCCACAGCGTCCCGCCTTCTACTTCCCTTGGCGTGCACCCCGCCCGTCCCCAGGA
 CACGGAGGATGCCATCGCCCTCGTGGAGTGCAGGTTGAGGGGCTGCCTCGTGGGAGGGCGGGTCTGGG
 GACATGGCCGTGGTTGCCAAGGCTGTGGCTGCCCTCTGACTGGAAGGCCCGCTGTTCTACGCTGCGG
 GCGCGAGCGCACAGGCTCTGTATCCGTGCACATGTTCTGACTATGTGGCGCAAAGTCTGCTGACCTG
 CCATGATGATGCTGCGCGGTTCTGCGGCTGCTGGCCACCCGGGTGTAGTGGCCTCATCCAGGAGGAC
 TTTGTGCCCTTCTGCAGGATGTGGTAACTCGCACCCGGGCTGGCCTTCTGAGGGCAGCGAAGGACT
 TCCACTCACGTTACATCACACAGTGATTACAGAGGATCTTCTACACAGTAAACCGGTCATGGTCAGGGAT
 GATCTCGCGTGAGGAGCTAAGGCGCAGCAGCTTCTGCAGGCTGTGTACAGTTGGAGGTAGAGCCTGAC
 ATCAACCGCATGACGTCGTTCTTCTTATGAGCATTCTATGTCATCTACTGCAAGTCTGGGAGCTCG
 ACCTCGACCGGACCTCACCAATTGACAGGAGCGACCTCGCACGCCATGGGGACGGGGCCATCTCTCCAG
 AATGATTGACCGCATCTTCTCAGGGCCGTCACCAGGGCAGGCTGCCCGAAAGTTCGGGAAGCTGAGC
 TACGCAGACTTTGTATGGTTCCTGCTCTCCGAGGAGACAAGACTACGCCACCAGCACCAGTACTGGT
 TCCGTTGCATGGACCTGGACGGTGGCGGCTCTCTCCATGTTTGAGCTCGAGTCTTCTATGAGGAGCA
 GGCCAGCGCATGGCCCGCCGGGTGTGGAGCCCTCCCTTCCACGACCTTGCACGCCAGGTGCTCGAC
 CTGTCGCCCCGCGCTGCCCGCCGGATCACGCTGCGGACCTGAAGCAGTGGCGCTGGCGGGTGGT
 TCTTCGACGCTTCTTCAACGTGGACAAGTACCTGGCACGGGAGCAGCGGAGCAGGCGGGGACTCCGCA
 GGACACTGACTCCGACCCCGCGCATCTGCCTGGGACAGGTATGCCGCGAGGAGTACGACTTCTCGTG
 GCCGAGGAGCCATGGCAGAGGACGACGACCATGACGAAGGGTCCGACCCCATAGATCTCTACGGCC
 TTGCTGACGAGGACTGCGACGACCTGGAGCCTCTG

ACGCGTACGCGGCCGCTCGAG - GFP Tag - GTTTAA

Protein Sequence:

>MG208433 representing BC027415
 Red=Cloning site Green=Tags(s)

MAPLTPRLQLKVDELFRRLGDPHTQRALSHALRRIRDPGTSDPAAAAATPDADPGNTSDPNPASRPLP
 RPALRTTGPRTVHAHRKEEPPQSPPHSVPAFYFPCGRPPRPQDTEAIALVECAFEGLPGRAGLG
 DMAVVAKACGCPLYWKAPLFYAAGGERTGSVSVHMFVAMWRKVLTLCHDDAARFVRLLGHPGCSGLIQED
 FVPFLQDVVNSHPGLAFLRAAKDFHSRYITTVIQRIFYTVNRSWSGMISREELRRSFLQAVSQLEVEPD
 INRMTSFFSYEHFYIYCKFWELDLDRDLTIDRSDLARHGDAISSRMIDRIFSGAVTRARLPRKVGKLS
 YADFVWLLSEEDKTTPTSTEYWFRCMDLDGDGALSMFELEFFYEEQAQRMAARGVEPLPFHDLARQVLD
 LVAPRCPRITLRLDKQCLAGEFFDAFFNVDKYLAREQREQAGTPQDTSDDPAASAWDRYAAEEYDFLV
 AEEAMAEDDDHDEGSDPIDLYGLADEDCDDLEPL

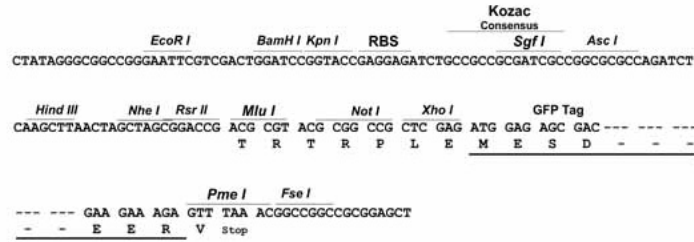
TRTRPLE - GFP Tag - V

Restriction Sites:

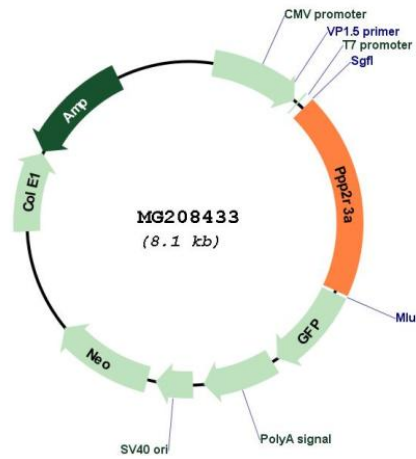
Sgfl-Mlul

Cloning Scheme:

Cloning sites used for ORF Shutting:



Plasmid Map:



ACCN:	BC027415
ORF Size:	1575 bp
OTI Disclaimer:	The molecular sequence of this clone aligns with the gene accession number as a point of reference only. However, individual transcript sequences of the same gene can differ through naturally occurring variations (e.g. polymorphisms), each with its own valid existence. This clone is substantially in agreement with the reference, but a complete review of all prevailing variants is recommended prior to use. More info
OTI Annotation:	This clone was engineered to express the complete ORF with an expression tag. Expression varies depending on the nature of the gene.
Components:	The ORF clone is ion-exchange column purified and shipped in a 2D barcoded Matrix tube containing 10ug of transfection-ready, dried plasmid DNA (reconstitute with 100 ul of water).
Reconstitution Method:	<ol style="list-style-type: none">1. Centrifuge at 5,000xg for 5min.2. Carefully open the tube and add 100ul of sterile water to dissolve the DNA.3. Close the tube and incubate for 10 minutes at room temperature.4. Briefly vortex the tube and then do a quick spin (less than 5000xg) to concentrate the liquid at the bottom.5. Store the suspended plasmid at -20°C. The DNA is stable for at least one year from date of shipping when stored at -20°C.
RefSeq:	BC027415.1
RefSeq Size:	1907 bp
RefSeq ORF:	1577 bp
Locus ID:	19054
Cytogenetics:	9 F4