

Product datasheet for **MG208432**

Ncf2 (NM_010877) Mouse Tagged ORF Clone

Product data:

Product Type:	Expression Plasmids
Product Name:	Ncf2 (NM_010877) Mouse Tagged ORF Clone
Tag:	TurboGFP
Symbol:	Ncf2
Synonyms:	Ncf-2; NOXA2; p67phox
Mammalian Cell Selection:	Neomycin
Vector:	pCMV6-AC-GFP (PS100010)
E. coli Selection:	Ampicillin (100 ug/mL)



[View online »](#)

ORF Nucleotide Sequence:

>MG208432 representing NM_010877
 Red=Cloning site Blue=ORF Green=Tags(s)

TTTTGTAATACGACTCACTATAGGGCGGCCGGAATTCGTCGACTGGATCCGGTACCGAGGAGATCTGCC
 GCC**CGCATCGCC**

ATGTCCTGGCTGAGCCATCAGACTCTGGAATGAAGGGGTGCTCGCAGCCGACAAGAAGGACTGGAAGG
 GGCCCTGGAGGCTTCAGCGAGGTGCAGGACCCCACTCGAGGATTTGCTTCAACATAGGCTGCGTGAA
 CACCATCTGGAAAACCTGCAGGAGCCGAGCAGGCTTCACAAAAGCATCAACAGAGACAAGCACTCT
 GCAGTGGCTACTCCAGAGAGGAATGCTCTACTACAGAATGGAGAAGTACGACCTTGCTATCAAAGACC
 TTAAGAGGCTTGACGCAGCTTCGTGGGAACCAGCTGATAGACTACAAGATCCTGGGGTGCAGTTCAA
 GCTGTTTGCTGTGAGGTATTGTACAATATTGCTCTCATGCATGCCAAGAAAGAGGAATGGAAGAAAGCA
 GAAGAGCAGTTGGCATTGGCAACCAACATGAAGTCCGAGCCAGGCATTCCAAGATCGACAAGGCCATGG
 AGAGCATCTGGAAGCAGAAGCTGTCGAGCCCGTGGTATCCCTGTGGTGGCTGTTCCGTCCAAATGA
 GAGGCAGTGGCTCAGCTGGCCAAAAGGACTATCTGGCAAGGCTACGTTGTAGCATCTGTGGTTTAC
 CAAGACAACCTTTCTGGCTTCGCCCTCTGCAGCCGAGTCAGCAGAGCCCTCCAGACCCAAAACCC
 CAGAAATCTTCAGGGCTCTGGAAGGTGAGGCACACCGCGTATTGTTTGGCTTTGTGCCGGAGACGCCAGA
 AGAGCTACAGGTCATGCCTGGGAACATCGCTTTTGTCTTGAAGAAGGCGAGTATAACTGGGCCACAGTC
 ATGTTCAATGGACAGAAGGGCTTGTCCTGCAACTACCTGGAGCCAGTTGAGCTTCGGATTACCCTC
 AGTCGAGCCCGAGGAAGATACCTCTCCAGAATCTGATATTCCACCACCTCCTAATTCTAGTCCCCCAGG
 AAGACTCCAGTTGTCACCAGGTCACAAGCAAAAAGAGCCCAAGGAAGTGAAGCTCAGCGTGCCTATGCCT
 TACATGCTCAAGTGCATTACAATAACACAGTGGTTCATGGAGACGCGGCTTGGCTCCCTACAGCCAGC
 TTCGGAACATGGTGTCTAAGAAGCTGGCGCTCTCGCCAGAACACACTAACTGAGCTACCGGCTCGGCA
 CAGCCACGAGCTTCTGCTCCTGTCCGAAGAAAGCATGAAGGATGCCTGGGCAAGTGAAGAACTACTGC
 CTGACTCTGTGGTGTGAGCATAACGGTGGTGGTACCAAGGCTTATTGATGAACCCATACAAAGGGAAACT
 CAGACGCCAGTAAGCAGACTACGGAGCCTCAGCCTAAGGAGGGGACCCAGGTGGTAGCAATCTTCAGTTA
 TGAGGCTGCCAGCCAGAAGACCTGGAATTTGTGGAAGGAGATGTAATCCTGGTACTGTCACATGTGAAT
 GAAGAATGGCTGGAAGGGGAGTGTAAAGGGAAAGTTGCCATTTCCCGAAGGCTTTTGTGAAGGATGTG
 CAGCCAAGAATTTGAAGGCATTCCAGAGAAGTC

ACGCGTACGCGGCCGCTCGAG – GFP Tag – GTTTAA

Protein Sequence:

>MG208432 representing NM_010877
 Red=Cloning site Green=Tags(s)

MSLAEAIRLWNEGVLAADKKDWKGALEAFSEVQDPHSRICFNIGCVNTILENLQAAEQAFTKSINRDKHS
 AVAYFQRGMLYYRMEKYDLAIKDLKEAL TQLRGNQLIDYKILGLQFKLFACEVL YNIALMHAKKEEWKKA
 EEQLALATNMKSEPRHSIDKAMESIWKQKLFEPVVIPVGR LFRPNERQVAQLAKKDYLGKATVVASVVH
 QDNFSGFAPLQPQSAEPPRPKTP EIFRALEGEAHRVLF GFVPETPEELQVMPGNIVFVLKKGSDNWATV
 MFNGQKGLVPCNYLEPVELRIHPQSQPQEDTSPESDIPPPPNSSPPGRLQLSPGHKQKEPKELKLSVPMP
 YMLKVHYKYTVVMETRLGLPYSQLRNMVSKKLALSPEHTKLSYRRRDSHELLLLSEESMKDAWGQVKNYC
 LTLWCEHTVGDQGLIDEP IQRENSDASKQTTEPQPKEGTQVVAIFSYEAAQPEDLEFVEGDVILVLSHVN
 EEWLEGECKGKVGIFPKAFVEGCAAKNLEGIPREV

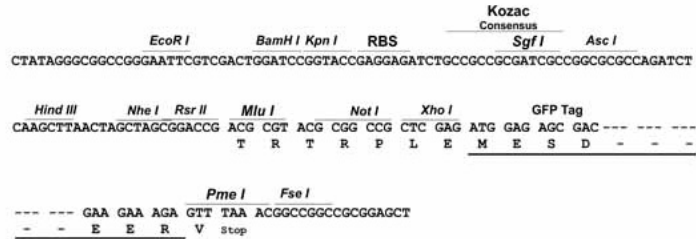
TRTRPLE – GFP Tag – V

Restriction Sites:

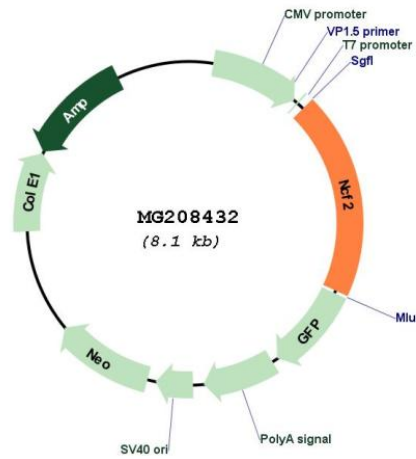
Sgfl-MluI

Cloning Scheme:

Cloning sites used for ORF Shutting:



Plasmid Map:



ACCN:	NM_010877
ORF Size:	1575 bp
OTI Disclaimer:	The molecular sequence of this clone aligns with the gene accession number as a point of reference only. However, individual transcript sequences of the same gene can differ through naturally occurring variations (e.g. polymorphisms), each with its own valid existence. This clone is substantially in agreement with the reference, but a complete review of all prevailing variants is recommended prior to use. More info
OTI Annotation:	This clone was engineered to express the complete ORF with an expression tag. Expression varies depending on the nature of the gene.
Components:	The ORF clone is ion-exchange column purified and shipped in a 2D barcoded Matrix tube containing 10ug of transfection-ready, dried plasmid DNA (reconstitute with 100 ul of water).
Reconstitution Method:	<ol style="list-style-type: none">1. Centrifuge at 5,000xg for 5min.2. Carefully open the tube and add 100ul of sterile water to dissolve the DNA.3. Close the tube and incubate for 10 minutes at room temperature.4. Briefly vortex the tube and then do a quick spin (less than 5000xg) to concentrate the liquid at the bottom.5. Store the suspended plasmid at -20°C. The DNA is stable for at least one year from date of shipping when stored at -20°C.
RefSeq:	NM_010877.2 , NP_035007.1
RefSeq Size:	2597 bp
RefSeq ORF:	1578 bp
Locus ID:	17970
UniProt ID:	O70145
Cytogenetics:	1 65.05 cM
Gene Summary:	NCF2, NCF1, and a membrane bound cytochrome b558 are required for activation of the latent NADPH oxidase (necessary for superoxide production).[UniProtKB/Swiss-Prot Function]