

Product datasheet for **MG208431**

Slc32a1 (BC052020) Mouse Tagged ORF Clone

Product data:

Product Type:	Expression Plasmids
Product Name:	Slc32a1 (BC052020) Mouse Tagged ORF Clone
Tag:	TurboGFP
Symbol:	Slc32a1
Synonyms:	R75019; VGAT; Viaat
Mammalian Cell Selection:	Neomycin
Vector:	pCMV6-AC-GFP (PS100010)
E. coli Selection:	Ampicillin (100 ug/mL)



[View online »](#)

ORF Nucleotide Sequence:

>MG208431 representing BC052020
 Red=Cloning site Blue=ORF Green=Tags(s)

TTTTGTAATACGACTCACTATAGGGCGGCCGGAATTCGTCGACTGGATCCGGTACCGAGGAGATCTGCC
 GCC**CGGATCGCC**

ATGGCCACCCTGCTCCGAGCAAGCTGACCAATGTGGCCACCTCCGTGTCCAACAAGTCCCAGGCCAAGG
 TGAGCGGCATGTTTGCCAGGATGGGTTTCAGGCGGCCACCGATGAGGAAGCGGTGGCTTCGCGCACTG
 CGACGATCTCGACTTTGAGCATCGCCAGGGCTGCAGATGGACATCCTGAAATCGGAAGGCGAGCCCTGC
 GGAGACGAGGGCGCAGAAGCTCCCGTCGAGGGAGACATTCATTATCAGCGCGGGCGCTCCTCTGCCAC
 CCTCTGGCTCCAAGGACCAGGCCGTGGGAGCTGGTGGGGAGTTCGGGGGTACGACAAACCAAGATCAC
 GGCGTGGGAAGCGGGCTGGAACGTGACAAATGCCATTAGGGCATGTTCTGTCTGGGCTACCTACGCC
 ATCCTCCACGGCGGTACCTGGGTTGTTCTCATCATCTTCGCCGAGTGGTGTCTGTCTACACCGCA
 AGATCCTCATCGCGTGCCTGTACGAGGAGAACGAAGACGGGGAGGTGGTGCCTGCGGGACTCGTATGT
 GGCCATAGCTAACGCATGCTGCGCTCCTCGATTCCCCACCTGGGCGGCCGCTGGTCAATGTGGCGCAG
 ATCATCGAGCTGGTGATGACGTGTATCTTGTACGTGCTGGTGAGCGGCAACCTCATGTACAACAGTTCC
 CGGGGCTGCCCGTGTGCGAGAAGTCTGGTCCATCATAGCCACAGCGGTGCTGCTGCCCTGCGCCTTCT
 GAAGAATCTCAAGGCCGTGTCCAAGTTCAGTCTGCTGTGTACGCTGGCCACTTCGTCATCAACATCCTG
 GTCATCGCTTACTGTCTCTCTCGCGCGCTGATTGGGCCCTGGGAGAAGGTGAAGTTCTACATCGACGTCA
 AGAAGTTTCCCATCTCCATTGGCATCATCGTGTTCAGTACACGTCGAGATCTTCTGCCCTCTCTCGA
 AGGCAACATGCAGCAGCCAGCGAATCCACTGCATGATGAACGGACACACATCGCCGCTGCGTGCTC
 AAGGGTCTCTTCGCGCTCGTGCCTACCTCACCTGGGCCGACGAGACCAAGGAAGTCAACCGGATAACC
 TGCCCGGCTCCATCCGCGCGGTGGTCAACCTCTCTGGTGGCCAAAGGCGCTGCTCATCCGTTGCC
 CTCTTCGCGGCCGTGCAAGTCTGAGAGAAGTCTCTCTCCAGGAAGGCAGTCCGCGCTTCTCCCGCC
 TGCTATGGAGGCGACGGTGCCTTAAGTCTGGGGCTGACGCTGCGCTGCGCGTGGTGGTCTTACGCG
 TGCTCATGGCCATCTACGTGCCACACTTCGCGTGTCTCATGGCCCTCACGGGCAGCCTCACAGGCGCCGG
 CCTCTGCTTCTGCTGCCAGCCTTCCACTTGCCTTCTCTGGCGAAGCTGCTGTGGCACCAGGTC
 TTCTTCGATGTGGCCATCTTCGTCATCGGCGCATCTGCAGCGTGTCCGGCTTCGTGCATTCACTCGAGG
 GTCTCATCGAGGCTACCGAACCAACGCAGAGGAC

ACGCGTACGCGGCCGCTCGAG - GFP Tag - GTTTAA

Protein Sequence:

>MG208431 representing BC052020
 Red=Cloning site Green=Tags(s)

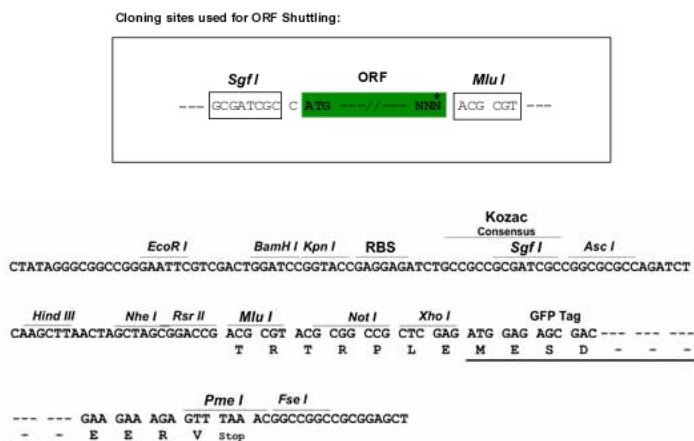
MATLLRSKLTNVATSVSNKSQAKVSGMFARMGFQAATDEEAVGF AHCDLDFEHRQLQMDILKSEGEPC
 GDEGAEPVEGDIHYQRGGAPLPPSGSKDQAVGAGGEFGGHDKPKITAWAAGWNVTNAIQGMFVLGLPYA
 ILHGGYLGLFLIIFAAVVCCYTGKILIACLYEENEDGEVVRVRSYVAIANACCAPRFP TLGGRVNVAAQ
 IIELVMTCILYVVVSGNLMYNSFPGLPVSQKSWSIATAVLLPCAFLKNLKAVSKFSL LCTLAHFVINIL
 VIAYCLSRARDWAEKVKFYIDVKKFPISIGIIVFSYTSQIFLPSLEGNMQPSEFHCMMNWTHIAACVL
 KGLFALVAYLTWADETKEVITDNLPGSIRAVVNLFLVAKALLSYPLPFFAAVEVLEKSLFQEGSRAFFPA
 CYGGDGR LKSWGLTLRCALVVFTLLMAIYVPHFALLMGLTGSLTGAGLCFLLPSLFHLRLLWRKLLWHQV
 FFDVAIFVIGGICSVSGFVHSLEGLIEAYRTNAED

TRTRPLE - GFP Tag - V

Restriction Sites:

Sgfl-MluI

Cloning Scheme:



ACCN: BC052020

ORF Size: 1575 bp

OTI Disclaimer: The molecular sequence of this clone aligns with the gene accession number as a point of reference only. However, individual transcript sequences of the same gene can differ through naturally occurring variations (e.g. polymorphisms), each with its own valid existence. This clone is substantially in agreement with the reference, but a complete review of all prevailing variants is recommended prior to use. [More info](#)

OTI Annotation: This clone was engineered to express the complete ORF with an expression tag. Expression varies depending on the nature of the gene.

Components: The ORF clone is ion-exchange column purified and shipped in a 2D barcoded Matrix tube containing 10ug of transfection-ready, dried plasmid DNA (reconstitute with 100 ul of water).

Reconstitution Method:

1. Centrifuge at 5,000xg for 5min.
2. Carefully open the tube and add 100ul of sterile water to dissolve the DNA.
3. Close the tube and incubate for 10 minutes at room temperature.
4. Briefly vortex the tube and then do a quick spin (less than 5000xg) to concentrate the liquid at the bottom.
5. Store the suspended plasmid at -20°C. The DNA is stable for at least one year from date of shipping when stored at -20°C.

RefSeq: [BC052020](#), [AAH52020](#)

RefSeq Size: 2814 bp

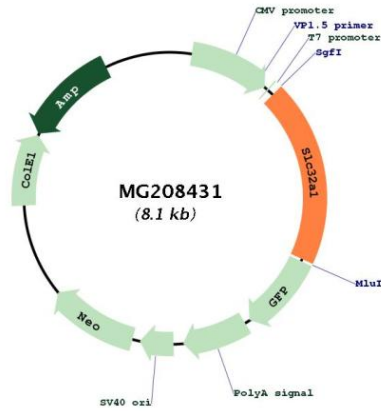
RefSeq ORF: 1577 bp

Locus ID: 22348

Cytogenetics: 2 H1

Gene Summary: Involved in the uptake of GABA and glycine into the synaptic vesicles.[UniProtKB/Swiss-Prot Function]

Product images:



Circular map for MG208431