

Product datasheet for **MG208429**

Arsg (NM_028710) Mouse Tagged ORF Clone

Product data:

Product Type:	Expression Plasmids
Product Name:	Arsg (NM_028710) Mouse Tagged ORF Clone
Tag:	TurboGFP
Symbol:	Arsg
Synonyms:	6330406P08Rik; AI846872
Mammalian Cell Selection:	Neomycin
Vector:	pCMV6-AC-GFP (PS100010)
E. coli Selection:	Ampicillin (100 ug/mL)



[View online »](#)

ORF Nucleotide Sequence:

>MG208429 representing NM_028710
 Red=Cloning site Blue=ORF Green=Tags(s)

TTTTGTAATACGACTCACTATAGGGCGGCCGGAATTCGTCGACTGGATCCGGTACCGAGGAGATCTGCC
 GCC**CGCATCGCC**

ATGGGCTGGCTCTTTCTAAAGTTTTGTGGTTGGCATGGCTTTTCTGGATTTTCTACCTCTCGTGG
 ATTTCTCTATCAGTGGGAAAACAAGAGCCCCCAACAAACATCGTGATCATTTTGGCTGATGACATGGG
 ATGGGGTGATCTGGGAGCAAACCTGGGCAGAAAACAAGGACACCACCAATCTTGACAAGATGGCTCCGAA
 GGAATGAGGTTTGTAGACTTCCACGCAGCTGCTTCTACCTGCTCCCCATCCCGAGCCTCCCTGCTCACTG
 GCCGGTGGTCTACGGAACGGAGTCACGCACAACCTCGCAGTCACTCTGTAGGGGGGCTTCCAGTCAA
 CGAGACCACCTTGGTAGAGGTGCTGCGACAGGAGGTTACGTCACTGCCATGATAGGCAAGTGGCATCTT
 GGGCATCATGGCTCTTATCATCCCAATTTCCGTGGCTTCGATTACTACTTTGGAATCCCATATAGCAATG
 ACATGGGTTGCACTGATGCTCCAGGCTACAACCTACCTCCTTGTCCAGCGTGTCCACAGAGAGATGGCCT
 ATGGAGGAACCTGGGAGGGACTGTTACACAGATGTTGCCCTTCTCTATGAAAACCTGAACATCGTG
 GAGCAGCCTGTGAACCTGAGCGGCTTGCACAGAAGTACGCAGAAAGGGCAGTGGAGTTCATTGAGCAGG
 CAAGCACCACTGGAAGACCCCTTCTGCTCTACGTGGGCCTGGCTCACATGCATGTGCCTTTGTCTGTAAC
 TCCACCATTGGCACACCCACAGCGCAAAGCCTGTACCGTGAAGTCTCCGGGAGATGGACAGTCTGGTA
 GGGCAGATCAAGGACAAAGTTGACCATGTGGCAAGAGAAAACACACTCCTCTGGTTTACAGGAGACAATG
 GCCCATGGGCTCAGAAGTGTGAGCTGGCAGGCAGCGTGGGTCCCTTCTTCGGGTTGTGGCAAACCCATCA
 AGGGGGAAGTCCAACCAAGCAGACCACCTGGGAAGGTGGGCATCGGGTCCAGCACTGGCTTACTGGCCT
 GGCAGAGTCCAGCCAACGTCACTAGCACCGCCTGTTAAGCTTGTAGACATCTTCCCCACCGTATAG
 CTCTGGCAGGACCCAGCTTCCCCAAACCCGAAATTTGATGGACGGGATGTCTCTGAGGTGCTCTTTGG
 CAAGTCAAGATGGGGCACAGGTGCTATTCCACCCCAACAGTGGGGCTGCTGGAGAGTATGGCGCCCTG
 CAGACTGTCCGCCTAAACCATTACAAGCTTTCTACATCACTGGTGGAGCCAAAGCTTGTGATGGGAGCG
 TGGGCTCTGAGCAGCACCACGTGGCCCTCTCATTTTCAACCTAGAAGATGCTGCTGATGAAGGGATGCC
 TCTACAGAAGGGGAGCCCGAGTACCAGGAGGTGCTGCAGCAGGTACCAGGGCTCTCGCAGATGCTCCTC
 CAAGACATCGCTGATGACAACAGCTCCCGAGCAGACTACACTCAGGATCCTTCAGTGATTCCTTGTCTGTA
 ACCCCTATCAAACCTACCTGCCGTGCCAACCGGTC

ACGCGTACGCGGCCGCTCGAG - GFP Tag - GTTTAA

Protein Sequence:

>MG208429 representing NM_028710
 Red=Cloning site Green=Tags(s)

MGWFLKLVLLVGMASGFFYPLVDFSIKTRAPQPNIVIIILADDMGWGDLGANWAETKDTTNLDKMASE
 GMRFVDFHAAASTCSPSRASLLTGRLGLRNGVTHNFAVTSVGGLPVNETTLVEVLRQEGYVTAMIGKWHL
 GHHGSYHPNFRGFDYYFGIPYSNDMGCTDAPGYNYPPCPACQDRDGLWRNPGRDCYTDVALPLYENLNIV
 EQPVNLSGLAQKYAERAVEFIEQASTSGRPFLLYVGLAHMHVPLSVTPPLAHPQRQSLYRASLREMSLV
 GQIKDKVDHVARENTLLWFVDGNGPWAQKCELAGSVGPFGLWQTHQGGSPKQTTWEGGHRVPALAYWP
 GRVPANVTSTALLSLLDIFPTVIALAGASLPPNRKFDGRDVSEVLFKGSQMGRVLFHPNSGAAGEYGAL
 QTVRLNHYKAFYITGGAKACDGSVGPQHHVAPLIFNLEDAADEGMPLQKGSPEYQEVLLQVTRALADVL
 QDIADDNSSRADYTDPSVIPCCNPYQTTCRCQPV

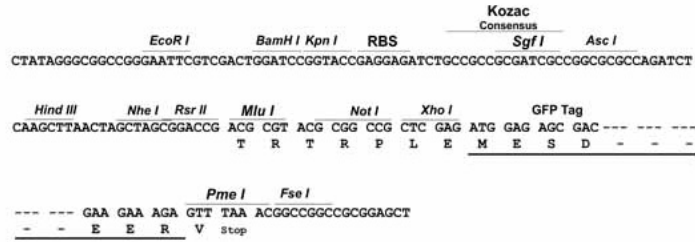
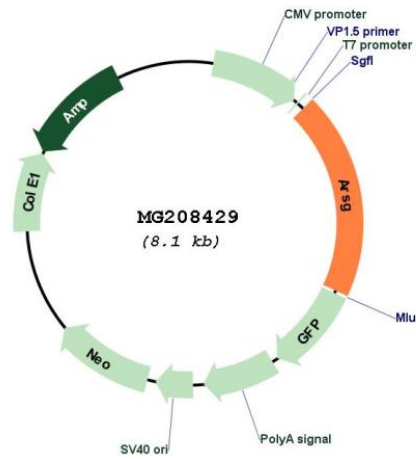
TRTRPLE - GFP Tag - V

Restriction Sites:

Sgfl-Mlul

Cloning Scheme:

Cloning sites used for ORF Shutting:

**Plasmid Map:**

ACCN:	NM_028710
ORF Size:	1575 bp
OTI Disclaimer:	The molecular sequence of this clone aligns with the gene accession number as a point of reference only. However, individual transcript sequences of the same gene can differ through naturally occurring variations (e.g. polymorphisms), each with its own valid existence. This clone is substantially in agreement with the reference, but a complete review of all prevailing variants is recommended prior to use. More info
OTI Annotation:	This clone was engineered to express the complete ORF with an expression tag. Expression varies depending on the nature of the gene.
Components:	The ORF clone is ion-exchange column purified and shipped in a 2D barcoded Matrix tube containing 10ug of transfection-ready, dried plasmid DNA (reconstitute with 100 ul of water).
Reconstitution Method:	<ol style="list-style-type: none">1. Centrifuge at 5,000xg for 5min.2. Carefully open the tube and add 100ul of sterile water to dissolve the DNA.3. Close the tube and incubate for 10 minutes at room temperature.4. Briefly vortex the tube and then do a quick spin (less than 5000xg) to concentrate the liquid at the bottom.5. Store the suspended plasmid at -20°C. The DNA is stable for at least one year from date of shipping when stored at -20°C.
RefSeq:	NM_028710.2 , NP_082986.2
RefSeq Size:	2982 bp
RefSeq ORF:	1578 bp
Locus ID:	74008
UniProt ID:	Q3TYD4
Cytogenetics:	11 E1
Gene Summary:	Displays arylsulfatase activity with pseudosubstrates at acidic pH, such as p-nitrocatechol sulfate.[UniProtKB/Swiss-Prot Function]