

Product datasheet for **MG208419**

PPP2R3A (BC059852) Mouse Tagged ORF Clone

Product data:

Product Type:	Expression Plasmids
Product Name:	PPP2R3A (BC059852) Mouse Tagged ORF Clone
Tag:	TurboGFP
Symbol:	PPP2R3A
Synonyms:	PP2A B ^{''} -PR59; PP2A PR59; PPP2R3; PPP2R3A; PR59
Mammalian Cell Selection:	Neomycin
Vector:	pCMV6-AC-GFP (PS100010)
E. coli Selection:	Ampicillin (100 ug/mL)



[View online »](#)

ORF Nucleotide Sequence:

>MG208419 representing BC059852
 Red=Cloning site Blue=ORF Green=Tags(s)
 TTTTGTAAATACGACTCACTATAGGGCGGCCGGGAATTCGTCGACTGGATCCGGTACCGAGGAGATCTGCC
 GCC**CGGATCGCC**

ATGGCGCCGCTGACGCCGCGCTACAGCTGAAGGTGGACGAGCTCTCCGCGCTGGCTCGGCGATCCTC
 ACACGCAGCGCGCTCAGCCACGCCCTCGCCGCATCCGGGACCCAGGGACGACCTCTGACCCCGCCG
 CGCCGCGACCCCGATGCGGACCCCGAAACACGACCTCCGACCCTAACCCCGCCTCCCGACCGCTGCCG
 CGGCCCGCGCTGAGAACGACGGGACCCAGGACGGTCCATGCCACAGGAAGGAGGAGCCCGCCCGCAGT
 CCCCACCCCTGGCCACAGCGTCCCGCCTTCTACTTCCCTTGCGGTGCACCCCGCCCGTCCCGAGGA
 CACGGAGGATGCCATCGCCCTCGTGGAGTGCAGCTTTCGAGGGGCTGCCTCGTGGGAGGGCGGGTCTGGG
 GACATGGCCGTGGTTGCCAAGGCTGTGGCTGCCCTCTGACTGGAAGGCCCGCTGTTCTACGCTGCGG
 GCGCGGAGCGCACAGGCTCTGTATCCGTGCACATGTTCTGACTATGTGGCGCAAAGTCTGCTGACCTG
 CCATGATGATGCTGCGCGGTTCTGCGGCTGCTGGCCACCCGGGTGTAGTGGCCTCATCCAGGAGGAC
 TTTGTGCCCTTCTGCAGGATGTGGTGAACCTCGCACCCGGGCTGGCCTTCTGAGGGCAGCGAAGGACT
 TCCACTCACGTTACATCACACAGTGATTACAGAGGATCTTCTACACAGTAAACCGGTATGGTCAGGGAT
 GATCTCGCGTGAGGAGCTAAGGCGCAGCAGCTTCTGCAGGCTGTGTACAGTTGGAGGTAGAGCCTGAC
 ATCAACCGCATGACGTCGTTCTTCTTATGAGCATTCTATGTCATCTACTGCAAGTCTGGGAGCTCG
 ACCTCGACCGGACCTCACCAATTGACAGGAGCGACCTCGCACGCCATGGGGACGGGGCCATCTCTCCAG
 AATGATTGACCGCATCTTCTCAGGGCCGTCACAGGGCGAGGCTGCCCGAAAGGTGCGGAAGCTGAGC
 TACGCAGACTTTGTATGGTTCCTGCTCTCCGAGGAGGACAAGACTACGCCACCAGCACCAGTACTGGT
 TCCGTTGCATGGACCTGGACGGTGCAGCGCTCTCTCCATGTTTGAGCTCGAGTCTTCTATGAGGAGCA
 GGCCAGCGCATGGCCCGCCGGGTGTGGAGCCCTCCCTTCCACGACCTTGCACGCCAGGTGCTCGAC
 CTGTCGCCCCGCGCTGCCCGCCGGATCACGCTGCGGACCTGAAGCAGTGCAGCCTGGCGGGTGA
 TCTTCGACGCTTCTTCAACGTGGACAAGTACCTGGCACGGGAGCAGCGGAGCAGGCGGGGACTCCGCA
 GGACACTGACTCCGACCCCGCGCATCTGCCTGGGACAGGTATGCCGCGGAGGAGTACGACTTCTCGTG
 GCCGAGGAGGCCATGGCAGAGGACGACGACCATGACGAAGGGTCCGACCCCATAGATCTCTACGGCC
 TTGCTGACGAGGACTGCGACGACCTGGAGCCTCTG

ACGCGTACGCGGCCGCTCGAG - GFP Tag - GTTTAA

Protein Sequence:

>MG208419 representing BC059852
 Red=Cloning site Green=Tags(s)
 MAPLTPRLQLKVDELFRRLGDPHTQRALSHALRRIRDPGTSDPAAAAATPDADPGNTSDPNPASRPLP
 RPALRTTGPRTVHAHRKEEPPQSPPHSVPAFYFPCGRPPRPQDTEAIALVECAFEGLPGRAGLG
 DMAVVAKACGCPLYWKAPLFYAAGGERTGSVSVHMFVAMWRKVLTLCHDDAARFVRLLGHPGCSGLIQED
 FVPFLQDVVNSHPGLAFLRAAKDFHSRYITTVIQRIFYTVNRSWSGMSREELRRSFLQAVSQLEVEPD
 INRMTSFFSYEHFYIYCKFWELDLDRDLTIDRSDLARHGDAISSRMIDRIFSGAVTRARLPRKVGKLS
 YADFVWFLLEEDKTTPTSTEYWFRCMDLDGDGALSMFELEFFYEEQAQRMAARGVEPLPFHDLARQVLD
 LVAPRCPRITLRLDKQCLAGEFFDAFFNVDKYLAREQREQAGTPQDSDPAASAWDRYAAEEYDFLV
 AEEAMAEDDDHDEGSDPIDLYGLADEDCDDLEPL

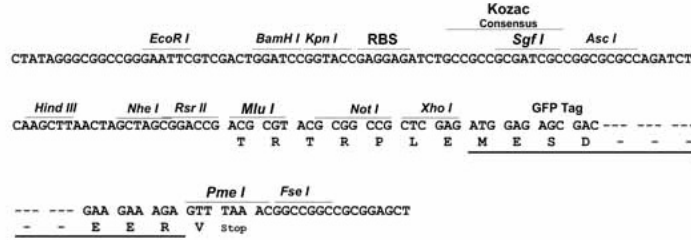
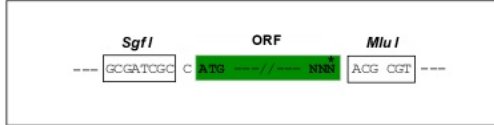
TRTRPLE - GFP Tag - V

Restriction Sites:

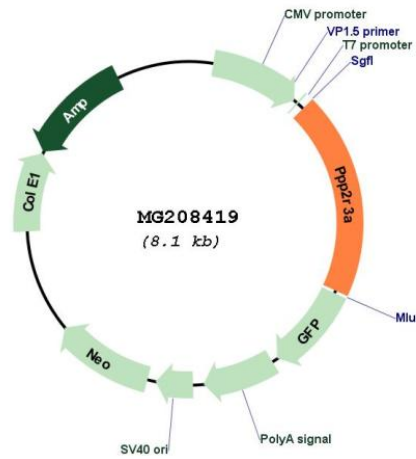
Sgfl-MluI

Cloning Scheme:

Cloning sites used for ORF Shutting:



Plasmid Map:



ACCN:	BC059852
ORF Size:	1577 bp
OTI Disclaimer:	The molecular sequence of this clone aligns with the gene accession number as a point of reference only. However, individual transcript sequences of the same gene can differ through naturally occurring variations (e.g. polymorphisms), each with its own valid existence. This clone is substantially in agreement with the reference, but a complete review of all prevailing variants is recommended prior to use. More info
OTI Annotation:	This clone was engineered to express the complete ORF with an expression tag. Expression varies depending on the nature of the gene.
Components:	The ORF clone is ion-exchange column purified and shipped in a 2D barcoded Matrix tube containing 10ug of transfection-ready, dried plasmid DNA (reconstitute with 100 ul of water).
Reconstitution Method:	<ol style="list-style-type: none">1. Centrifuge at 5,000xg for 5min.2. Carefully open the tube and add 100ul of sterile water to dissolve the DNA.3. Close the tube and incubate for 10 minutes at room temperature.4. Briefly vortex the tube and then do a quick spin (less than 5000xg) to concentrate the liquid at the bottom.5. Store the suspended plasmid at -20°C. The DNA is stable for at least one year from date of shipping when stored at -20°C.
RefSeq:	BC059852 , AAH59852
RefSeq Size:	2172 bp
RefSeq ORF:	1577 bp
Locus ID:	19054
Cytogenetics:	9 F4