

Product datasheet for **MG208414**

Pmpca (NM_173180) Mouse Tagged ORF Clone

Product data:

Product Type:	Expression Plasmids
Product Name:	Pmpca (NM_173180) Mouse Tagged ORF Clone
Tag:	TurboGFP
Symbol:	Pmpca
Synonyms:	1200002L24Rik; 4933435E07Rik; Alpha-MPP; P-55
Mammalian Cell Selection:	Neomycin
Vector:	pCMV6-AC-GFP (PS100010)
E. coli Selection:	Ampicillin (100 ug/mL)



[View online »](#)

ORF Nucleotide Sequence:

>MG208414 representing NM_173180
 Red=Cloning site Blue=ORF Green=Tags(s)

TTTTGTAATACGACTCACTATAGGGCGGCCGGGAATTCGTCGACTGGATCCGGTACCGAGGAGATCTGCC
 GCC**CGGATCGCC**

ATGGCGACGGCAGTGTGGCGGCTGCGCGGCTGCTTCGGGGATCTGCGGTGCTGTGCGCGCGGCCAGGT
 TTGGATCTCCTGCACACAGACGGTTCAGCAGTGGTGCCACCTACCCCAACATCCCCTCTCTTCCCTT
 GCCTGGAGTACCAAGCCTATTTTTGCAACAGTTGATGGACAGGAAAAGTTTGAACCAAAGTTACCACT
 CTGGACAATGGGCTTCGTGTGGCATCTCAAATAAGTTTGGACAATTCTGTACCGTAGGAATTCTTATTA
 ATTCAGGATCACGATATGAAGCGAAATATCTTAGTGGAAAGCTCATTTTTTGGAAAAATTGGCATTTC
 GTCCACTGCTCGATTTGACAGCAAAGACGAAATCCTGCTACGCTGAAAAACATGGTGGTATCTGTGAC
 TGCCAGACCTCAAGAGACACCACCATGTATGCTGTGTCTGCTGACAGCAAAGGCTTGGACACTGTGGTGG
 ATCTGTTGGCTGATGTGGTTCTGCACCCCGACTGACAGATGAAGAAATTGAGATGACGAGGATGGCTGT
 GCAGTTTGAAGTACAGGACCTGAACATGAGACCTGACCCAGAGCCACTGCTCACCAGATGATTCATGAA
 GCTGCTTTTAGGGAGAACACAGTGGGTCTGCACCGGTTCTGCCCTGTAGAGAACATAGCGAAGATCGATC
 GGAAGTGTGCTGACTCCTACCTAAAGAATACTACACCCCTGACCGCATGGTGTCTGGGGTGGGCGT
 GGAGCATGAGCACCTAGTAGAATGTGCCAGAAAGTACCTCGTGGGAGCCGAGCCTGCCTGGGGAGCCCT
 GGAACGGTGGACGTTGACAGATCAGTGGCACAGTACACTGGGGGATCATCAAGTGGAAAGAGACATGT
 CAAATGTCAGCCTTGGCCCAACCCCAATTCAGAGCTCACACACATCATGGTGGGACTGGAGAGCTGTT
 CTTCCTGGAGGACGACTTATCCCCTTGTCTGTCTGAATATGATGATGGGAGGAGGGGCTCCTTCTCA
 GCTGGAGGGCTGGCAAAGGCATGTTCTCAGGCTCTACCTCAATGTGCTCAATCGGCACCACTGGATGT
 ACAATGCAACCTCTACCACACAGCTATGAAGATACAGGCCTCCTGTGCATTATGCCAGCGCAGACCC
 AAGACAAGTTCGAGAAATGGTAGAAATCATCACAAGGAGTTTATCTTGATGGGCAGGACGGTGGATTTG
 GTGGAGCTAGAGCGGGCAAGACACAGCTCATGTCCATGCTCATGATGAACCTGGAGTCCAGGCCTGTGA
 TTTTTGAGGATGTGGGAGGCAGGTGTTGGCTACACATTCAAGAAAGCTGCCCCACGAGCTATGTACACT
 CATTTCGCAACGTGAAGCCAGAAGATATCAAGAGGGTGTCTCCAAGATGCTCCGTGGCAAGCCTGCTGTG
 GCTGCCCTGGGTGATTTGACTGACCTACCCACCTATGAGCACATCCAGGCAGCGTGTCCAGCAGAAATG
 GACACCTGCCAGATCATACCGGCTGTTCCGG

ACGCGTACGCGGCCGCTCGAG - GFP Tag - GTTTAA

Protein Sequence:

>MG208414 representing NM_173180
 Red=Cloning site Green=Tags(s)

MATAVWAAARLLRGSAVLCARPRFGSPAHRRFSSGATYPNIPLSSPLPGVPKPIFATVDGQEKFETKVTT
 LDNGLRVASQNKFGQFCTVGILINSGSRYEAKYLSGIAHFLEKLAFSSTARFDSKDEILLTLEKHGGICD
 CQTSRDTTYAVSADSKGLDVTVDLLADVVLHPRLTDEE.IEMTRMAVQFELEDLNMRPDPEPLLEMIHE
 AAFRENTVGLHRFCPVENIAKIDREVLHSHYKKNYYTPDRMVLAVGVVEHEHLVECARLYLVAEPAWGAP
 GTVDVDRSVAQYTGIIKVERDMSNLSLGPPIPELTHIMVGLSCSFLEDDFIPFAVLNMMGGGGSFS
 AGGPGKGMFSRLYLNVLNRHHWYNATSYHHSYEDTGLLCIHASADPRQVREMEIITKEFILMGRVTDL
 VELERAKTQLMSMLMMNLESRPVIIFEDVGRQVLATHSRKLPHELCTLIRNVKPEDIKRVASKMLRGKPAV
 AALGDLTDLPTYEHIQAALSSRNHGLPRSYRLFR

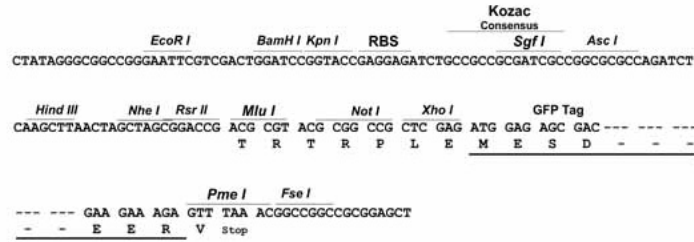
TRTRPLE - GFP Tag - V

Restriction Sites:

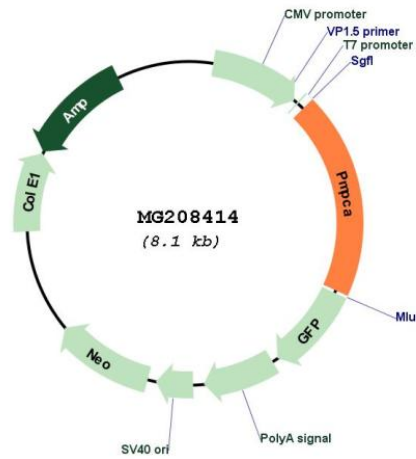
Sgfl-Mlul

Cloning Scheme:

Cloning sites used for ORF Shutting:



Plasmid Map:



ACCN:	NM_173180
ORF Size:	1572 bp
OTI Disclaimer:	The molecular sequence of this clone aligns with the gene accession number as a point of reference only. However, individual transcript sequences of the same gene can differ through naturally occurring variations (e.g. polymorphisms), each with its own valid existence. This clone is substantially in agreement with the reference, but a complete review of all prevailing variants is recommended prior to use. More info
OTI Annotation:	This clone was engineered to express the complete ORF with an expression tag. Expression varies depending on the nature of the gene.
Components:	The ORF clone is ion-exchange column purified and shipped in a 2D barcoded Matrix tube containing 10ug of transfection-ready, dried plasmid DNA (reconstitute with 100 ul of water).
Reconstitution Method:	<ol style="list-style-type: none">1. Centrifuge at 5,000xg for 5min.2. Carefully open the tube and add 100ul of sterile water to dissolve the DNA.3. Close the tube and incubate for 10 minutes at room temperature.4. Briefly vortex the tube and then do a quick spin (less than 5000xg) to concentrate the liquid at the bottom.5. Store the suspended plasmid at -20°C. The DNA is stable for at least one year from date of shipping when stored at -20°C.
RefSeq:	NM_173180.3 , NP_775272.1
RefSeq Size:	3125 bp
RefSeq ORF:	1575 bp
Locus ID:	66865
UniProt ID:	Q9DC61
Cytogenetics:	2 A3
Gene Summary:	Substrate recognition and binding subunit of the essential mitochondrial processing protease (MPP), which is required for maturation of the majority of mitochondrial precursor proteins (By similarity). Most MPP cleavage sites follow an arginine at position -2 (By similarity). [UniProtKB/Swiss-Prot Function]