

Product datasheet for **MG208408**

Arhgef3 (BC005517) Mouse Tagged ORF Clone

Product data:

Product Type:	Expression Plasmids
Product Name:	Arhgef3 (BC005517) Mouse Tagged ORF Clone
Tag:	TurboGFP
Symbol:	Arhgef3
Synonyms:	1200004I24Rik; 9830169H03Rik; C76747; Xpln
Mammalian Cell Selection:	Neomycin
Vector:	pCMV6-AC-GFP (PS100010)
E. coli Selection:	Ampicillin (100 ug/mL)



[View online »](#)

ORF Nucleotide Sequence:

>MG208408 representing BC005517
 Red=Cloning site Blue=ORF Green=Tags(s)

TTTTGTAATACGACTCACTATAGGGCGGCCGGAATTCGTCGACTGGATCCGGTACCGAGGAGATCTGCC
 GCC**CGCATCGCC**

ATGGTGGCCAAGGATTACCCCTTCTACCTCACTGTCAAGAGGGCAAACCTGCAGCTTGGAGGCCCCCTGG
 GCAGCGGGTGGCCAAGGACGAGGAACCTAGTAACAAAAGGGTCAAACCCCTTCCAGAGTCACATCGCT
 AGCAAACCTCATTCCACCTGTGAAGACCACACCATTAAAGCGCTTCAGCCAGACCTTGCAGCGGTCCATC
 AGCTTCCGCAGCGAGAGCCGCCGACATCCTTCCCCCGAGCTTGGTCCAGAAATGCCACCTCTCAA
 GCACAAAGCGGAGAGACAGCAAACCTGTGGAGTGAGACCTTCGATGTGTGTGCAATCAGGTGCTCACGGC
 CAAGGAGATCAAGAGACAGGAGCGATCTTTGAACCTTCTCAAGGTGAAGAAGACTTGATAGAGGACTTG
 AAATTAGCAAAAAGGCCTACCACGACCCCATGCTGAACTCTCCATAATGACGGAACAGGAACTGAATC
 AGATTTTTGGGACCTGGACTCTCTAATTCCTCCATGAAGAGCTCCTCAGTCAGCTTCGAGATGTTCCG
 GAAACCCGATGGCTCGACTGAGCAGTTGGTCCCATCCTCGTGGGCTGGCTGCCCTGTCTCAGCTCCTAC
 GACAGCTACTGCAGCAATCAAGTCGCCGCCAAAGCCCTGCTGGACCACAAAAGCAGGACCACAGAGTGC
 AGGACTTCTCCAGCGCTGTTTGAATCACCTTCAGTCGAAAACCTCGATCTCTGGAATTCCTTGATAT
 TCCCCGGAGCCGGCTAGTGAAGTATCCTCTGCTCCTTCGAGAAATCCTGAGGCATACACCAAATGATAAC
 CCAGACCAGCAGCACCTGGAAGAAGCTATAAACATCATCCAGGGAATTGTGGCAGAAATCAACACCAAGA
 CTGGGGAAATCGGAATGCCGCTATTACAAAGAGCGGCTCCTTACCTGGAAGAAGGCCAGAAAAGATTCTCT
 GATTGACAGCTCAAGGGTCTGTGTGTGATGGAGAGCTGAAAAATAACCGGGGTGTGAACTCCATGTT
 TTCTGTTCGAAGAAGTCTGGTGTATCACCCGAGCTATCACTCACACGAGCAGCTCTGCTATCAGTTGT
 ACCGGCAGCCCATCCCTGTGAAGGACCTCACGCTGGAAGACCTGCAGGATGGAGAAGTCCGGCTGGTGG
 CTCCTGCGCGGGGCTTCAGCAACAACGAGAGAGTTAAAAACTTCTTCAGAGTCAGTTTCAAAAATGGA
 TCCCAAAGTCAGACCCACTCACTACAAGCCAACGACACCTTCAACAAACAGCAGTGGCTCAACTGTATCC
 GTCAGGCAAAAAGAACTGTTCTGTCTGCTGCCGCCAGGCTGGCTTGCTTGACTCTGAGGGACTGGTCCA
 GGGTCCCAGCACTGAGAACAGGGAGCCACAGGGAGAAAACAAAACCTTGAGCAGATGGACCAATCGGACAGC
 GAGTCGGACTGCAGTATGGACACCAGTGGGTGAGCTTGGTGTGAGCGGATGGAACAGACAGACGCTT
 CCTGTGCAAACAGCAGGCCCGAGGAGAGTGTCT

ACGCGTACGCGGCCGCTCGAG - GFP Tag - GTTTAA

Protein Sequence:

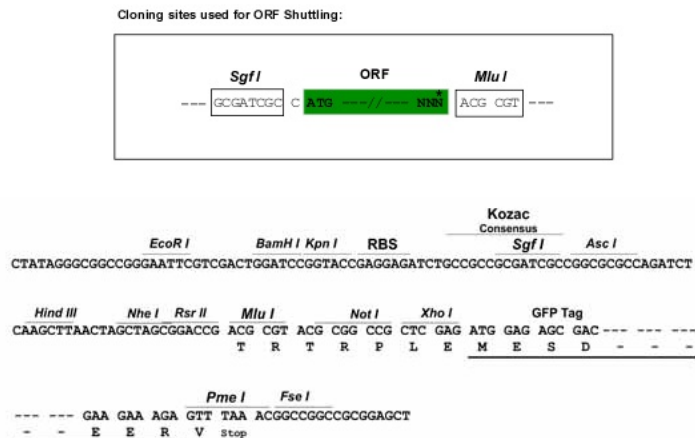
>MG208408 representing BC005517
 Red=Cloning site Green=Tags(s)

MVAKDYPFYLVKVRANCSLEAPLGSVAKDEEPSNKRKVKPLSRVTSANLIPPVKTTPPKRFSQTLQRSI
 SFRSESRPDILAPRAWSRNATSSSTKRRDSKLWSETFDVCVNVQLTAKEIKRQEAIFFELSQGEEDLIEDL
 KLAKKAYHDPMLKLSIMTEQELNQIFGTLDSLIPLHEELLSQLRDVVRKPDGSTEHVGPILVWLPCLSSY
 DSYCSNQVAAKALLDHKKQDHRVQDFLQRCLESPFSRKLDLWNFLDIPRSRLVKYPLLLREILRHTPNND
 PDQQHLEEAINI IQGIVAEINTKTGESECRYKERLLYLEEGQKDSLIDSSRVLCCHGELKNNRNVKLVH
 FLFQEVLVITRAITHNEQLCYQLYRQPIPVKDLTLEDLQDGEVRLGGSLRGAFSNNERNVKNFFRVSFKNG
 SQSQTHSLQANDTFNKQQLNLCIRQAKETVL SAAGQAGLLDSEGLVQPGTENREPQGETKLEQMDQSDS
 ESDCSMDTSEVSLE CERMEQTDASCANSRPEESV

TRTRPLE - GFP Tag - V

Restriction Sites:

Sgfl-MluI

Cloning Scheme:


ACCN: BC005517

ORF Size: 1572 bp

OTI Disclaimer: The molecular sequence of this clone aligns with the gene accession number as a point of reference only. However, individual transcript sequences of the same gene can differ through naturally occurring variations (e.g. polymorphisms), each with its own valid existence. This clone is substantially in agreement with the reference, but a complete review of all prevailing variants is recommended prior to use. [More info](#)

OTI Annotation: This clone was engineered to express the complete ORF with an expression tag. Expression varies depending on the nature of the gene.

Components: The ORF clone is ion-exchange column purified and shipped in a 2D barcoded Matrix tube containing 10ug of transfection-ready, dried plasmid DNA (reconstitute with 100 ul of water).

Reconstitution Method:

1. Centrifuge at 5,000xg for 5min.
2. Carefully open the tube and add 100ul of sterile water to dissolve the DNA.
3. Close the tube and incubate for 10 minutes at room temperature.
4. Briefly vortex the tube and then do a quick spin (less than 5000xg) to concentrate the liquid at the bottom.
5. Store the suspended plasmid at -20°C. The DNA is stable for at least one year from date of shipping when stored at -20°C.

RefSeq: [BC005517.1](#)

RefSeq Size: 3628 bp

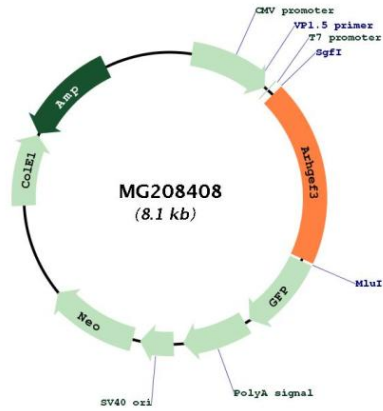
RefSeq ORF: 1574 bp

Locus ID: 71704

Cytogenetics: 14 16.09 cM

Gene Summary: Acts as guanine nucleotide exchange factor (GEF) for RhoA and RhoB GTPases. [UniProtKB/Swiss-Prot Function]

Product images:



Circular map for MG208408