

Product datasheet for **MG208404**

Arfgap3 (NM_025445) Mouse Tagged ORF Clone

Product data:

Product Type:	Expression Plasmids
Product Name:	Arfgap3 (NM_025445) Mouse Tagged ORF Clone
Tag:	TurboGFP
Symbol:	Arfgap3
Synonyms:	0610009H19Rik; 1810004P07Rik; 1810035F16Rik; 9130416J18Rik; Arfgap1
Mammalian Cell Selection:	Neomycin
Vector:	pCMV6-AC-GFP (PS100010)
E. coli Selection:	Ampicillin (100 ug/mL)



[View online »](#)

ORF Nucleotide Sequence:

>MG208404 representing NM_025445
 Red=Cloning site Blue=ORF Green=Tags(s)

TTTTGTAATACGACTCACTATAGGGCGGCCGGAATTCGTCGACTGGATCCGGTACCGAGGAGATCTGCC
 GCC**CGCATCGCC**

ATGGGGGACCCAGCAAGCAGGACATCCTGGCCATCTTCAAGCGCTGCGCTCGGTGCCACTAACAAAGG
 TGTGTTTTGACTGTGGTGCCAAAAATCCAGCTGGGCCAGCATAAGCTATGGGGTGTCTCTGCATTGA
 CTGCTCTGGATCACACCGGTCGCTCGGGGTTCACTTGAGTTTTATTTCGGTCCACAGAGCTGGATTCAAAC
 TGGTCGTGGTTCCAGCTTCGATGCATGCAAGTTGGAGGAACTCAAATGCTTCTCTCTTCCACCAAC
 ATGGGTGTGCCACCAAGGACACCAACGCCAAGTACAACAGCCGTGCGGCTCAGCTCTACAGGAGAAGAT
 CAAGACTCTGGCCACCCAGGCCACCCGACGGCACGGCACCGATCTGTGGCTGGACAGCTGTGCGGCTCCA
 CCTGTGTCCCCTCTCAAAGGAGGAAGATTTTTTGTCTCTCACGCCTCTCTGGAGGTCAGTGGTGCTA
 TGCAGGCATCCGCACAGCCAGAGTCAGCCTCTTCAACACCGTGGGGCTTGAAACCCTCCAGAAAAACA
 TGAAGGTGGGCCAGGACAAGGGCAAGCGTGGAAGGTCTGAACACCCCTGAAAGGCTGCACCAGAGGTT
 TCATCGATTATAAAAAAGAACCAATCAAGCAAAAAAGGACTTGGAGCCAAAAAGGAAGCTTGGGAG
 CCCAGAACTGACAAATACATCCTTCACTGAGATCGAAAAGCAAGCTCAGGCTGTGGATAAGAGGAAGGA
 GCAGGAAGACCTTGCAGGGGTGCCCAAAGGAGGAGTCTATTGTTTCGTCCTTGCAGCTGGCCTACAAG
 GATCTGGAAATCAGCAGGAAGAAAGATGAAAGACTGAACCTGAGTGGCCAGAAGAAGGTGGAAGCCGAGC
 GGCTGGGCATGGGCTTTGGAAGCTGCAGGAGTGGCATCTCCACTCGGTGACTTCAGACATGCAGACCAT
 TGAGCAGGAGTCGCCCACACTGGCAAAGCCGAGGAGGAAGTACCAGGAGGACCCAGAGGACTCGTACTTC
 AGCTCCAGCTCCAAGTGGTCTGAGCAGAGCAGCAGCAGGTAAGTACGACACCCATGGAGTTAAGAAGCA
 GTCCTTCTCTAGCTGGGATGATGGTGCCGATTCCTACTGGAAGAAAGACAGCAGCAGACCCCGAGCC
 TGCCATGAGAAGCACCGGCTCTTCAGACAGGCCAGTGCTCGCCGGAAGCCAGAATATGAGCCCATTTGGC
 AGCACAGATGAAGCCAGAAAGTTTGGCAACGTCAAGGCCATCTCTTCAAGACATGTACTTTGGAATTC
 AAGCCAGACAGATTTTGAACCCGGGCGGGCTGGAGAGGCTCTCCACCAGCTCTCCATAAGCTCTGC
 AGACCTTTTTGATGAGCAGAGGAAGCAGACTGCAGGAACTACAACCTTTCCAATGTGCTGCCCAATGCC
 CCAGACATGGCGCAGTTCAAGCAAGGTGTGCGCTCCGTTGCTGAAAACTTCCGCTTTCGCCAATGGGG
 TCATGACGTCCATTCAGGATCGTACGGTTCT

ACGCGTACGCGGCCGCTCGAG – GFP Tag – GTTTAA

Protein Sequence:

>MG208404 representing NM_025445
 Red=Cloning site Green=Tags(s)

MGDPSKQDILAIKRLRSVPTNKVCFDCGAKNPSWASISYGVFLCIDCSGSHRSLGVHLSFIRSTELDSN
 WSWFQLRCMQVGGNSNASSFFHQHGCATKDTNAKYNRAAQLYREKIKTLATQATRRHGTDLWLDSCAAP
 PVSPPPKEEDFFASHASLEVSGAMQASAPESASSTPWGLETTPEKHEGGPGQGPSVEGLNTPGKAPEV
 SSIKKKPNQAKKGLGAKKGSLSGAQKLTNTSFTIEKQAQAVDKRKEQEDLARGAPKEESIVSSLRLAYK
 DLEISRKKDERLNLGQKQVEAERLGMGFGSCRSGISHSVTSDMQTIEQESPTLAKPRRYQEDPEDSYF
 SSSSKWSEQSSRYFDDPMELRSSSFSSWDDGADSYWKKDSSRDPEPAMRSTGSSDRPSARRKPEYEP
 IGSTDEAQKFKGNVKAISSDMYFGIQAQDFETRARLERLSTSSSISSADLFDEQRKQTAGNYNLSNVL
 PNA PDMAQFKQGVRSVAGKLSVFANGVMTSIQDRYGS

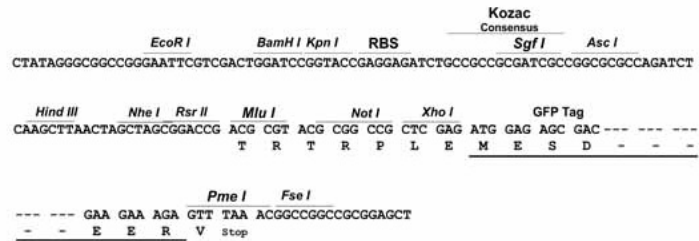
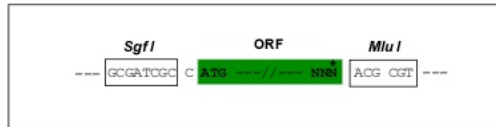
TRTRPLE – GFP Tag – V

Restriction Sites:

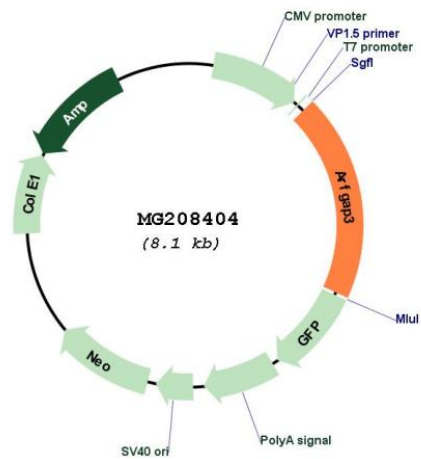
Sgfl-MluI

Cloning Scheme:

Cloning sites used for ORF Shutting:



Plasmid Map:



ACCN:	NM_025445
ORF Size:	1572 bp
OTI Disclaimer:	The molecular sequence of this clone aligns with the gene accession number as a point of reference only. However, individual transcript sequences of the same gene can differ through naturally occurring variations (e.g. polymorphisms), each with its own valid existence. This clone is substantially in agreement with the reference, but a complete review of all prevailing variants is recommended prior to use. More info
OTI Annotation:	This clone was engineered to express the complete ORF with an expression tag. Expression varies depending on the nature of the gene.
Components:	The ORF clone is ion-exchange column purified and shipped in a 2D barcoded Matrix tube containing 10ug of transfection-ready, dried plasmid DNA (reconstitute with 100 ul of water).
Reconstitution Method:	<ol style="list-style-type: none">1. Centrifuge at 5,000xg for 5min.2. Carefully open the tube and add 100ul of sterile water to dissolve the DNA.3. Close the tube and incubate for 10 minutes at room temperature.4. Briefly vortex the tube and then do a quick spin (less than 5000xg) to concentrate the liquid at the bottom.5. Store the suspended plasmid at -20°C. The DNA is stable for at least one year from date of shipping when stored at -20°C.
RefSeq:	NM_025445.2 , NP_079721.2
RefSeq Size:	2619 bp
RefSeq ORF:	1575 bp
Locus ID:	66251
UniProt ID:	Q9D8S3
Cytogenetics:	15 E1
Gene Summary:	GTPase-activating protein (GAP) for ADP ribosylation factor 1 (ARF1). Hydrolysis of ARF1-bound GTP may lead to dissociation of coatomer from Golgi-derived membranes to allow fusion with target membranes (By similarity).[UniProtKB/Swiss-Prot Function]