

Product datasheet for **MG208393**

Npepl1 (NM_213733) Mouse Tagged ORF Clone

Product data:

| | |
|---------------------------|---|
| Product Type: | Expression Plasmids |
| Product Name: | Npepl1 (NM_213733) Mouse Tagged ORF Clone |
| Tag: | TurboGFP |
| Symbol: | Npepl1 |
| Synonyms: | BC023239; C85514; mKIAA1974 |
| Mammalian Cell Selection: | Neomycin |
| Vector: | pCMV6-AC-GFP (PS100010) |
| E. coli Selection: | Ampicillin (100 ug/mL) |



[View online »](#)

ORF Nucleotide Sequence:

>MG208393 representing NM_213733
 Red=Cloning site Blue=ORF Green=Tags(s)

TTTTGTAATACGACTCACTATAGGGCGGCCGGGAATTCGTCGACTGGATCCGGTACCGAGGAGATCTGCC
 GCC**GCGATCGCC**

ATGGCGAGCGTGGGGCTGCAGTTCAGGCCAGCGCCGGGACCGGACCCCCAGAGCCGGCCCTGTCTGC
 TGTGGGCGCAGCTGCAACACCTGCACCGCGTGCCTGGAGCCACGTCCGCGGGAAGCTGCAGCCCGGGT
 CACCGAGGAGCTCTGGCAGGCAGCTCTGCCACGCTCAACCCCAACCCACAGACAGCTGTCTCTCTAC
 CTGAAGTGCGCCACAGTGGCAGCTCTGCCTTCTAGGGTGAAGCCGACATAACAGCCCGTCCGAGCCCACT
 TCATCACCAGGCTCGTGAGAACCTGCCTGCCTCCTGGAACCCACCGGTGTATCCTGATGGTCTGCGAACA
 GACTGAGGTTTTTGCCTCTGCCTGTGCCTTGGCACGGCCTTCCCACTCTTACACACCGCTCAGGGGCA
 TCCCGCGCGCAGAGAAGAGGACAGTATGGTGGAGTTCTTCTGGTGGGACAAGACAATGGCCAGTGG
 AAGTGTCCACCTGCAATGTTTAAACAATGCTACAGAAGGTGTCGACTAGCAGCTCGCATTGTGGACAC
 GCCGTGCAATGAGATGAACACAGACATCTTCTTGAGGAGATTATCCAAGTTGAAAGGAGCTGGGTATC
 ACCCCACCATCATCCGCGATGAGCAGCTAAAGACCAAAGGATTTGGAGGAATCTATGGGGTTGGCAAAG
 CTGCCCTCCATCCACCCGCTCTGGCCATCCTTAGCCACACCCCTGATGGGGCCACACAGACCATTGCCTG
 GGTGGGCAAGGGCATCGTCTATGACACCGCGGTCTCAGCATCAAAGGAAAGACCACTATGCCAGGGATG
 AAGCGAGACTGTGGGGTGCAGCCGCTCTGGGAGCCTTCCAGAGCCGATCAAGCAGGGTTTCAAAG
 ATAACCTCCATGCTGTGTCTGCTTGGCCGAGAATGCAGTTGGACCAACGCCACCAGGCCGGATGACAT
 TCACCTGCTGACTCGGGGAAGACCGTAGAGATCAACAACACGGATGCTGAGGGCAGGCTGGTGTGGCA
 GACGGGGTGTCTACGCTTGCAAAGACCTGGGGGCTGACATCATCGTGGACATGGCCACCCTGACAGGGG
 CACAAGGCATTGCCACAGGGAAGTACCATGCAGCCGCTGCTCACCACAGCCGAGTGGGAGGCCGCTG
 CGTGAAGGCTGGCCGGAAGTGCAGGACCTGGTCCACCCGCTAGTCTACTGCCCTGAGCTGCACTCAGC
 GAATTCACCTCGGCTGTGGCTGACATGAAGAACTCCGTGGCGGACCGAGACAACAGCCCAAGCTCCTGTG
 CTGGCCTCTTATTGCTTACACATCGGGTTTACTGGCCGGGGTCTGGGTCCACCTGGACATCGCTGC
 TCCAGTGCATGCTGGCGAGCGAGCCACAGGCTTTGGGGTGGCTCTCCTACTGGCTCTTTTGGCCGTGCC
 TCCGAGGACCCGCTGCTGAACCTGGTATCCCGCTGGACTGTGAGGTGGATGCCAGGAAGGCGACAACA
 TGGGGCGTGACTCCAAGAGACGGAGGCTCGTG

ACGCGTACGCGGCCGCTCGAG - GFP Tag - GTTTAA

Protein Sequence:

>MG208393 representing NM_213733
 Red=Cloning site Green=Tags(s)

MASVGLQFQASAGDADPQSRPLLLLGLQLHLHRVPWVSHVRGKLQPRVTEELWQAALATLNPNTDSCPLY
 LNCATVAALPSRVSRRHNSPSAAHFITRLVRTCLPPGTHRCILMVCEQTEVFASACALARAFPLFTHRSGA
 SRRAEKRTVMVEFFLVGQDNGPVEVSTLQCLTNATEGVRLAARIVDTPCNEMNTDIFLEEIIQVGKELGI
 TPTIIRDEQLKTKGFGGIYGVGKAALHPPALAILSHTPDGATQTIWVGKGIYVYDTGGLSIKGTTPMGM
 KRDCGAAAVLGAFFRAAIKQGFKNLHAFVCLAENAVGNATRPDDIHLLYSGKTVINNTDAEGRVLVA
 DGVSYACKDLGADIIIVDMATLTGAQGIATGKYHAAVL TNSAEWEAACVKAGRKCGDLVHPLVYCPHELHFS
 EFTSAVADMKNVADRDNSPSSCAGLFIASHIGFDWPGVWVHLDIAAPVHAGERATGFGVALLLALFGRA
 SEDPLLNLSPLDCEVDAQEGDNMGRDSKRRRLV

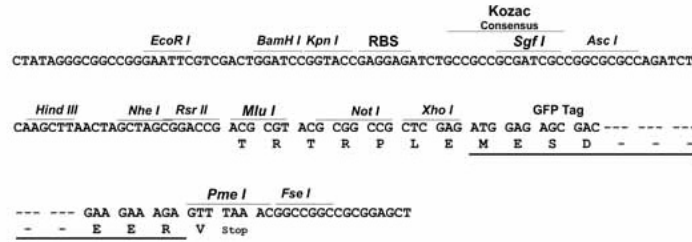
TRTRPLE - GFP Tag - V

Restriction Sites:

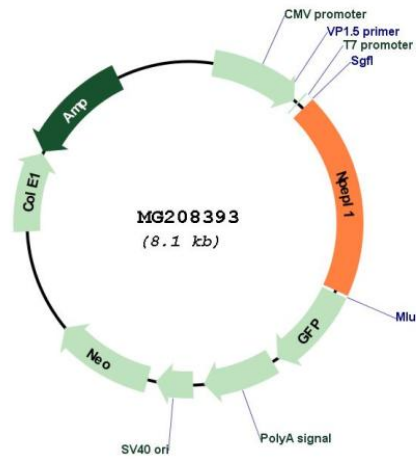
Sgfl-Mlul

Cloning Scheme:

Cloning sites used for ORF Shutting:



Plasmid Map:



| | |
|-------------------------------|---|
| ACCN: | NM_213733 |
| ORF Size: | 1572 bp |
| OTI Disclaimer: | The molecular sequence of this clone aligns with the gene accession number as a point of reference only. However, individual transcript sequences of the same gene can differ through naturally occurring variations (e.g. polymorphisms), each with its own valid existence. This clone is substantially in agreement with the reference, but a complete review of all prevailing variants is recommended prior to use. More info |
| OTI Annotation: | This clone was engineered to express the complete ORF with an expression tag. Expression varies depending on the nature of the gene. |
| Components: | The ORF clone is ion-exchange column purified and shipped in a 2D barcoded Matrix tube containing 10ug of transfection-ready, dried plasmid DNA (reconstitute with 100 ul of water). |
| Reconstitution Method: | <ol style="list-style-type: none">1. Centrifuge at 5,000xg for 5min.2. Carefully open the tube and add 100ul of sterile water to dissolve the DNA.3. Close the tube and incubate for 10 minutes at room temperature.4. Briefly vortex the tube and then do a quick spin (less than 5000xg) to concentrate the liquid at the bottom.5. Store the suspended plasmid at -20°C. The DNA is stable for at least one year from date of shipping when stored at -20°C. |
| RefSeq: | NM_213733.1 , NP_998898.1 |
| RefSeq Size: | 2105 bp |
| RefSeq ORF: | 1575 bp |
| Locus ID: | 228961 |
| UniProt ID: | Q6NSR8 |
| Cytogenetics: | 2 H4 |
| Gene Summary: | Probably catalyzes the removal of unsubstituted N-terminal amino acids from various peptides.[UniProtKB/Swiss-Prot Function] |