

Product datasheet for **MG208382**

Nol4 (NM_199024) Mouse Tagged ORF Clone

Product data:

Product Type:	Expression Plasmids
Product Name:	Nol4 (NM_199024) Mouse Tagged ORF Clone
Tag:	TurboGFP
Symbol:	Nol4
Synonyms:	1700013J13Rik; 4930568N03Rik; Gm1262
Mammalian Cell Selection:	Neomycin
Vector:	pCMV6-AC-GFP (PS100010)
E. coli Selection:	Ampicillin (100 ug/mL)



[View online »](#)

ORF Nucleotide Sequence:

>MG208382 representing NM_199024
 Red=Cloning site Blue=ORF Green=Tags(s)

TTTTGTAATACGACTCACTATAGGGCGGCCGGAATTCGTCGACTGGATCCGGTACCGAGGAGATCTGCC
 GCC**CGCATCGCC**

ATGGAGAGCGAGCGCACATGTACCGCCAGTTCAGGACTGGTGCCTTAGGACTTACGGGGACTCAGGCA
 AGACCAAGACGGTGACCGTAAGAAATATGAGCGGATTGTTACAGTTCTCAACGGCTCAGAGTCAAGCTC
 CACCGACAATGCCAAATTTAAATTTCTGGGTCAAATCGAAGGGTTTCCAGCTGGGCCAGCCTGATGAGGTC
 CGTGGGGGAGGCGCGCCGCAAGCAAGTCTCTCGTGCGGTCAAGACCACGGATGGCGTAGGAGTTG
 ATGAGAAGCTGTCTTACGGCGAGTGGCTGTGGTTGAAGATTTCTTTGACATCATCTATTCCATGCATGT
 GGAGACAGGGCCGAATGGAGAGCAAATCCGAAACACGCTGGGCAGAAGAGAAGTACAAAGCAATTTCA
 GAGAGCTATGCCTTCTACCAAGAGAAGCGGTGACACGGTTTCTAATGAGCTGTTCCGAGTGCCAGAAAA
 GAATGCACTTGAACCCAGATGGAACGGATCACAAAGATAATGAAAGCCTCTACACTGGTGACCAGCAT
 GATCGACTACAACATGCCAATCACAATGGCGTACATGAAGCACATGAAACTGCAGCTTCTGAACTCACAG
 CAAGATGAGGATGAAAGCTCAATAGAAAGTGACGAATTTGACATGAGTGATTCAACACGAATGTCAGCCG
 TGAACCTTGACCTTAGCTCCAACCTGGAAGAAAGAAATGCAAAGTCCCCAGACTGTCCATGGCCAGCAAGA
 TGATGACTCTGCTGCAGAGAGCTCTAATGGCAATGAGACTCTGGGGCACAGCTCAGCTGCTTACGGGGGA
 GCATGGCAGGGAGCCCGAGGACTCCAGCAGTGTGGCAAAAACGGGCTGGAGCAGGAAGAGCAGCCAC
 TGAACCTGAGTGACAGCCCCAGCTCTGCACAGCTCACTTCAGAGTTTCCAGGATAGATGACCAAGGCAGTGA
 TGGGAAAAACAAGTATAAGAATCTTCTAATCTCTGACCTCAAGATGGAACGAGAAGCGAGAGAAAATGGA
 AGCAAGTCTCCAGCACACAGCTACTCCAGCTATGACTCTGGCAAAAATGAGAGTGTGATCGAGGTGCAG
 AGGATCTGTCACTCAACAGGGGAGATGAAGATGAAGATGAACATGATGAGCATGAGGATTCGGAGAAGGT
 GAACGAGACAGATGGTGTGGAAGCTGAGAGGCTGAAAGCTTCAATTCTCGACCTATCCCTCCACCTT
 ACTTCAGCAGTTGCAGAGAGTATCTTGGCTTACGCTGTGAAAGCGAGAGTAGAAATGCTGCCAAGAGGA
 TGCGTCTGGATAAAGCACAGGATGAAGCTGCTCTGCTGACAAACAGTGCAAGCCGGAGGCAGCCAGGC
 CACCTACTCAACAGCTACTGTTCCAGGCTCCAGGAGGCCACAGATC

ACGCGTACGCGGCCGCTCGAG - GFP Tag - GTTTAA

Protein Sequence:

>MG208382 representing NM_199024
 Red=Cloning site Green=Tags(s)

MESERDMYRQFQDWLRTYGDGSGKTKTVTRKKYERIVQLLNGSESSSTDNAKFKFWVKSkgfLgQPDEV
 RGGGGGAKQVLFVRVKT TDG VGVDEKLSLRVAVVEDFDIIYSMHVETGPNGEQIRKHAGQKRTYKAIS
 ESYAFLPREAVTRFLMSCSECQKRMHLNPDGTDHKDNGKPPTLVTSMIDYNMPTIMAYMKHMKLQLLNSQ
 QDEDESSIESDEFDMSDSTRMSAVNSDLSNLEERMQSPQTVHGQQDDSAESSNGNETLGHSSAASGG
 AHGREPEDSSDGKTGLEQEEQLNLSDSPSSAQLTSEFRIDDQSDGKKNYKNLLISDLKMEREARENG
 SKSPAHSYSSYDSGKNE SVDRGAEDLSLNRGDEDEHDEHEDSEKVNEDTGVEAERLKAfNSRPiPSHL
 TSAVAESILASACESESrNAAKRMLDKAQDEAAPADKQCKPEAAQATYSTATVPGSQEDPQI

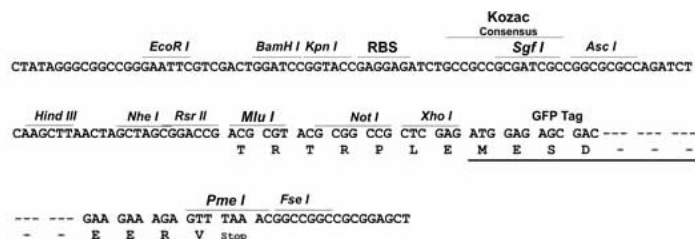
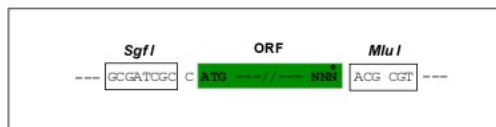
TRTRPLE - GFP Tag - V

Restriction Sites:

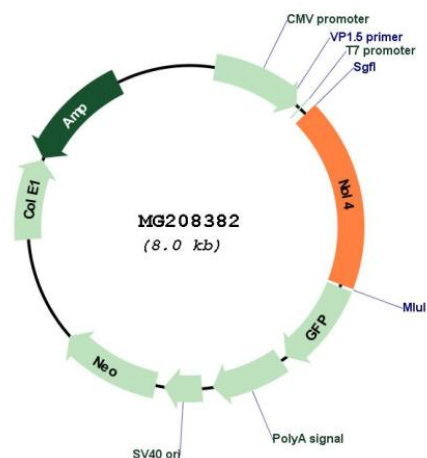
Sgfl-MluI

Cloning Scheme:

Cloning sites used for ORF Shutting:



Plasmid Map:



ACCN: NM_199024

ORF Size: 5026 bp

OTI Disclaimer: The molecular sequence of this clone aligns with the gene accession number as a point of reference only. However, individual transcript sequences of the same gene can differ through naturally occurring variations (e.g. polymorphisms), each with its own valid existence. This clone is substantially in agreement with the reference, but a complete review of all prevailing variants is recommended prior to use. [More info](#)

OTI Annotation: This clone was engineered to express the complete ORF with an expression tag. Expression varies depending on the nature of the gene.

Components: The ORF clone is ion-exchange column purified and shipped in a 2D barcoded Matrix tube containing 10ug of transfection-ready, dried plasmid DNA (reconstitute with 100 ul of water).

Reconstitution Method:

1. Centrifuge at 5,000xg for 5min.
2. Carefully open the tube and add 100ul of sterile water to dissolve the DNA.
3. Close the tube and incubate for 10 minutes at room temperature.
4. Briefly vortex the tube and then do a quick spin (less than 5000xg) to concentrate the liquid at the bottom.
5. Store the suspended plasmid at -20°C. The DNA is stable for at least one year from date of shipping when stored at -20°C.

RefSeq: [NM_199024.3](#)

RefSeq Size: 3309 bp

RefSeq ORF: 1452 bp

Locus ID: 319211

UniProt ID: [P60954](#)

Cytogenetics: 18 A2