

Product datasheet for **MG208380**

Glyctk (NM_174846) Mouse Tagged ORF Clone

Product data:

Product Type:	Expression Plasmids
Product Name:	Glyctk (NM_174846) Mouse Tagged ORF Clone
Tag:	TurboGFP
Symbol:	Glyctk
Synonyms:	6230410P16Rik; C430006L12
Mammalian Cell Selection:	Neomycin
Vector:	pCMV6-AC-GFP (PS100010)
E. coli Selection:	Ampicillin (100 ug/mL)



[View online »](#)

ORF Nucleotide Sequence:

>MG208380 representing NM_174846
 Red=Cloning site Blue=ORF Green=Tags(s)

TTTTGTAATACGACTCACTATAGGGCGGCCGGAATTCGTCGACTGGATCCGGTACCGAGGAGATCTGCC
 GCC**CGCATCGCC**

ATGGCTGCGGCCCTACAGGTCTTGCCCTGTCTCCTCCGAGCCCCGTCCCCTCCACTCCTCTGGGGCCCC
 CAGTGGCCCGGATGACCAAGTGGTATGGCTTTGGCAGAACAGGCACGGCAGCTGTTTGATAGTGCAGTGGG
 TGCTGTGCAGCCAGGCCCATGTGCAGAGGACTGTCCCTGGATCCTAGTGGCAGACAGCTGAAGGTG
 CGGGACCGGACCTTCCAGCTGCGGGAAAACCTCTACCTAGTGGGCTTCGGCAAGGCCGACTGGGCATGG
 CAGCTGCTGCCGAGGAGCTGCTGGCTCAGCATCTTGTGCAGGGTGTGATCAGCGTACCCAAGGGGATCCG
 AGCCGCTATGGAACATGCTGAAAGAAAGAGATGCTGCTGAAGCCACACAGCCGCTCCAGGTGTTGAG
 GCGCCGAGGACAACCTACCGGATCGGGATGCACTCCGGGCCGCGCTGACCATCCAGCAGCTGCCAGAGG
 GGCTCACTGCAGATGACCTGCTGCTGGTCTCATCTCAGGTGGGGCTCAGCCCTGCTGCCTGCTCCAAT
 CCCACCTGTCACACTGGAGGAGAAACAGATGCTCACCAAGCTGCTGGCAGCCGAGGAGCCACGATCCAG
 GAGCTGAACACCATCCGCAAGGCCCTGTGCGAGCTGAAGGGTGGAGGGCTGGCTCAGGCTGCCTATCCTG
 CTCAGGTGATAAGCCTCATCTTGTGAGATGTGATTGGGGACCCCTTGGAAAGTGATTGCCAGTGGCCCTAC
 GGTGGCCAGCGCCACAGTGTGCAAGACTGCCTGCATATTCTCAACCACTATGGCCTCCGTGCTGCTCTT
 CCCCCTCTGTGAAGACTGTGCTCTCCCGAGCTGACTCTGACCCCATGGACCACACACCTGTGGCCACG
 TCCTCAATGTGATCATCGGCTCTAACTCTTGGCGCTGGCTGAGGCTCAGAGGCAAGCTGAGGTGCTGGG
 CTACCATGCCATGGTGTGAGCACAGCCATGCAGGGTGTGTAAGAGAGTGGCTCGTTCTACGGGCTG
 CTAGCCCGGGTGGCTGCAGCCACCTCACTCCATCTTTGGCTGAGCGTCCCTTGGAGGAGGAGCGGAA
 TCCATCAGCTGGCAGCTGAGCTCCAGCTCCCGACCTGCAGCTGGAGGAGGCTCTGGAAGCGGTGGCAAA
 GGCTAAAGGGCCGGTCTGCCTCCTGGCTGGTGGTGGAGCCACGGTGCAGCTGCAGGGATCTGGCAAGGGC
 GGTGGAACCAAGAACTGGCCTTGCACGTGGGAGTGGAGCTGGGAAGGCACCACTGGGACCTATTGATG
 TGCTATTTTTGAGTGGAGGCACTGATGGGCAGGATGGGCCTACAAGGTGGCCGGGGCTGGGTCATGTC
 TGATCTCATCAGCCAGGCTTCTGCTGAGAGCCTGGACATCGCCACCTCCCTCACCAACAACGACTCATA
 ACTTTCTTTTGGCGTTCGGGGAGGAACATTTGCTGCACACAGGGTTGACAGGGACCAATGTTATGG
 ATGTCCACCTCCTGATTCTTCATCCTCAG

ACGCGTACGCGGCCGCTCGAG – GFP Tag – GTTTAA

Protein Sequence:

>MG208380 representing NM_174846
 Red=Cloning site Green=Tags(s)

MAAALQVLPCLLRAPSRPLLWPPVARMISGMALAEQARQLFDSAVGAVQPGPMLQRTLSDPSSGRQLKV
 RDRTFQLRENLYLVGFGKAVLGMAAAEEELLAQHLVQGVISVPKGIIRAAMEHAGKKEMLKPHSRVQVFE
 GAEDNLPDRDALRAALTIQQLAEGLTADDLLLVLISGGGSALLPAPIPPVTLEEKQMLTKLLAARGATI
 ELNTRKALSQKGGGLAQAAYPAQVLSLILSDVIGDPLEVIASGPTVASAHSVQDCLHILNHYGLRAAL
 PRSVKTVLSRADSDPHGPHTCGHVLNVIIGSNLALAEARQAEVLGYHAMVLSAMQGDVYKRVARFYGL
 LARVAAAHLTPSLAERPLEEEAELHQLAAELQLPDLQLEEALEAVAKAKGPVCLLAGGEPTVQLQGSKG
 GRNQELALHVGVELGRQPLGPIDVFLSGGTDGQDGPVKVAGAWMSDLISQASAESLDIATSLTNDSY
 TFFCRFRGGTHLLHTGLGTNVMDVHLLILHPQ

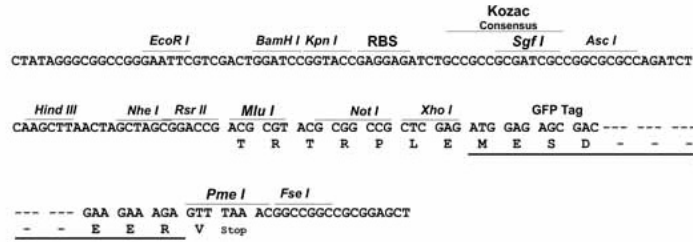
TRTRPLE – GFP Tag – V

Restriction Sites:

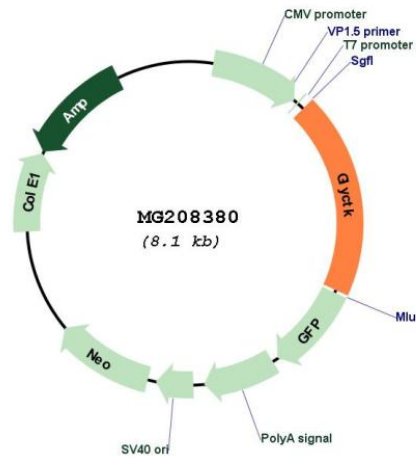
Sgfl-MluI

Cloning Scheme:

Cloning sites used for ORF Shutting:



Plasmid Map:



ACCN:	NM_174846
ORF Size:	1569 bp
OTI Disclaimer:	The molecular sequence of this clone aligns with the gene accession number as a point of reference only. However, individual transcript sequences of the same gene can differ through naturally occurring variations (e.g. polymorphisms), each with its own valid existence. This clone is substantially in agreement with the reference, but a complete review of all prevailing variants is recommended prior to use. More info
OTI Annotation:	This clone was engineered to express the complete ORF with an expression tag. Expression varies depending on the nature of the gene.
Components:	The ORF clone is ion-exchange column purified and shipped in a 2D barcoded Matrix tube containing 10ug of transfection-ready, dried plasmid DNA (reconstitute with 100 ul of water).
Reconstitution Method:	<ol style="list-style-type: none">1. Centrifuge at 5,000xg for 5min.2. Carefully open the tube and add 100ul of sterile water to dissolve the DNA.3. Close the tube and incubate for 10 minutes at room temperature.4. Briefly vortex the tube and then do a quick spin (less than 5000xg) to concentrate the liquid at the bottom.5. Store the suspended plasmid at -20°C. The DNA is stable for at least one year from date of shipping when stored at -20°C.
RefSeq:	NM_174846.3
RefSeq Size:	4226 bp
RefSeq ORF:	1572 bp
Locus ID:	235582
UniProt ID:	Q8QZY2
Cytogenetics:	9 F1