

Product datasheet for **MG208376**

AI450540 (BC062949) Mouse Tagged ORF Clone

Product data:

Product Type:	Expression Plasmids
Product Name:	AI450540 (BC062949) Mouse Tagged ORF Clone
Tag:	TurboGFP
Symbol:	AI450540
Synonyms:	AI450540; mKIAA1600
Mammalian Cell Selection:	Neomycin
Vector:	pCMV6-AC-GFP (PS100010)
E. coli Selection:	Ampicillin (100 ug/mL)



[View online »](#)

ORF Nucleotide Sequence:

>MG208376 representing BC062949
 Red=Cloning site Blue=ORF Green=Tags(s)

TTTTGTAATACGACTCACTATAGGGCGGCCGGAATTCGTCGACTGGATCCGGTACCGAGGAGATCTGCC
 GCC**CGCATCGCC**

ATGTTCTCCAAGCTTACGTCCATCCTGCAGCATGCCGTGGAGGCGCTCGACCGTCTCTCCCGTTACAAG
 AAGATTTTGTATCACTGGAAGGCGATTACACACTACTACATAGAACTTCAGATGATAAAGCCCCAGT
 GACCGACACAAACATCCCATCCCACCTGGAACAGATGTTAGACATCCTGGTCCAAGAAGAAAATGAGCGG
 GAATCTGGAGAGACAGGGCCATGCATGGAATACCTGCTCCATCACAAGATCTTGGAAACGTTATACACCT
 TAGGGAAAGCCGACTGCCCTCCAGGAATGAAGCAGCAGGTTTTGGTGTCTATACCAAGCTTCTGGGACG
 AATCCGGCAGCCCTGCTCCACACATCAACGTACACAGGCTGTGCAGAAATTAATTCGACTCTGTGGT
 GAGGTCCTTGCAACGCCAACGGAGAATGAAGAGATCCAGTTTCTCTGCATCGTGTGTCAAAGCTGAAAC
 AGGATCCCTACTTGGTCAACTTTTTCTGGAGAACAATCAAAGTCCCTGGTGTCCAGAGGAGCTCTGAG
 TGTCTATCTCAGAGGATGGCCAAAAGGTCAGGACCCGGGGTCCAGGAGACGTCAGCCAGTCCAGCAGCCC
 CAGGAGCTGTGAGGTGCTACTGGGGTGGAGCCACGGAGTCGGAGGAAGACCCCCCTCACAGATGGATG
 ACCTGTCTGCAAGCCTAGATGACCTCAATGTACCTCACTGCCGGAGGCCTCTGCCGTCCGGCCAAACCA
 GGACTACAACCTTAGTGAATCTTTGTTAAACCTGACAAGAAGTCTGACGGCCGGATAGCTGTGAAGGCC
 TGCGAGGGCTTGATGCTCTTGGTGAACCTACCGGAGCCTGCGGCTGCCAAGTGCCTTGTCTCAGAGCACCT
 GCCTGTGCGAGCTGTGACCGGCAGACTCACCTCCCTGTACAAGGCTCTACCTCAGTCAGTGGACCCCTT
 AGACATTGAAACCGTGGAGGCAGTTAACTGGGGTTGGACTCATACGCCATAAAGAAGACGCTTCGGCG
 TTCGGGGGAAGCGGGCCTAATTTCAATTTCTTCTCGCTGATTACTGTGATCAGTCATCAAGGAGG
 CAAAAAGACTGCTGCTGTCTCGCCAAAGCCATCCACGAAAGGTTCTTTGTTGGTGTCAAGGAAAC
 CCAGCTGATGCAGACCTCTGAGATGGGGATTCTGACCTCGACGGCCTTGTGCACCGCATCGTCCGGCAA
 GTGACCTCAGACGTCCTGCTCAGGAAATGGTGGTCTTCACTCCTCGGAGAACAGAGGGAGCCAGAAACTC
 TGTGAGAAATTAGCAGACATCCTCTAAGACATAGGTTAATCGAACATTGCGATCACATATCTGATGAGAT
 CAGCATCATGACCCTGAGGATGTTTGGATCTCCTACAAAAGCCCAATGAACACATCCTCTACAACCTG
 GTCTTGAGAAACCTGGAAGAAAGAACTATACGGAGAACAACCTTCTGCCCGGAAGACAAGGACGTGG
 TGGAGAACGGGCTGATAGCAGGCGCCGTA

ACGCGTACGCGGCCGCTCGAG - GFP Tag - GTTTAA

Protein Sequence:

>MG208376 representing BC062949
 Red=Cloning site Green=Tags(s)

MFSKLTSLQHAVEALAPSLPLQEDFVYHWKAI THYYIETSDDKAPVTD TNIPSHLEQMLDILVQEENER
 ESGETGPCMEYLLHHKILETLTYLTKADCPPGMKQVLFYTKLLGRIRQPLPHINVHRPVQKLI RLCG
 EVLATPTENEEIQFLCIVCAKLRQDPYLVNFFLENKSKSLVSRGALSVI SEDGPKGQDPGSGDVSQCQQP
 QELSGATGVEPTESEEEPPHQMDDL SASLDDLNVTS LPEASAVRPNQDYNLVNSLLNL TRSPDGRIAVKA
 CEGMLLVSLPEPAAAKCLAQSTCLCELLTGR L TSLYKALPQSVDPDIETVEAVNWGLDSYSHKEDASA
 FPGKRALISFLSWFDYCDQLIKEAQKTA AVALAKAIHERFFVGVMEPQLMQTSEMGI L TSTALLHRIVRQ
 VTSVDVLLQEMVVFILGEQREPETLSEISRHLRHRLIEHCDHISDEISIMTLRMFEHLLQKPNEHILYNL
 VLRNLEERNY TENKPSCPEDKDVVENGLIAGAV

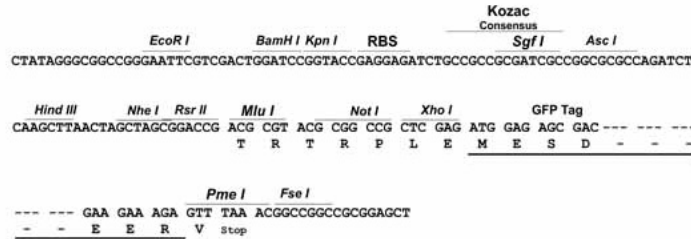
TRTRPLE - GFP Tag - V

Restriction Sites:

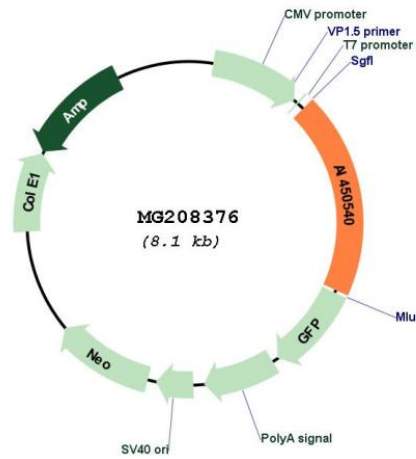
Sgfl-MluI

Cloning Scheme:

Cloning sites used for ORF Shutting:



Plasmid Map:



ACCN:	BC062949
ORF Size:	1571 bp
OTI Disclaimer:	The molecular sequence of this clone aligns with the gene accession number as a point of reference only. However, individual transcript sequences of the same gene can differ through naturally occurring variations (e.g. polymorphisms), each with its own valid existence. This clone is substantially in agreement with the reference, but a complete review of all prevailing variants is recommended prior to use. More info
OTI Annotation:	This clone was engineered to express the complete ORF with an expression tag. Expression varies depending on the nature of the gene.
Components:	The ORF clone is ion-exchange column purified and shipped in a 2D barcoded Matrix tube containing 10ug of transfection-ready, dried plasmid DNA (reconstitute with 100 ul of water).
Reconstitution Method:	<ol style="list-style-type: none">1. Centrifuge at 5,000xg for 5min.2. Carefully open the tube and add 100ul of sterile water to dissolve the DNA.3. Close the tube and incubate for 10 minutes at room temperature.4. Briefly vortex the tube and then do a quick spin (less than 5000xg) to concentrate the liquid at the bottom.5. Store the suspended plasmid at -20°C. The DNA is stable for at least one year from date of shipping when stored at -20°C.
RefSeq:	BC062949 , AAH62949
RefSeq Size:	3797 bp
RefSeq ORF:	1571 bp
Locus ID:	226252
Cytogenetics:	19 D2
Gene Summary:	May be required for proper functioning of the nervous system.[UniProtKB/Swiss-Prot Function]