

## Product datasheet for **MG208371**

### Cyp4f13 (NM\_130882) Mouse Tagged ORF Clone

#### Product data:

Product Type:	Expression Plasmids
Product Name:	Cyp4f13 (NM_130882) Mouse Tagged ORF Clone
Tag:	TurboGFP
Symbol:	Cyp4f13
Synonyms:	0610030I10Rik; Cypf13
Mammalian Cell Selection:	Neomycin
Vector:	pCMV6-AC-GFP (PS100010)
E. coli Selection:	Ampicillin (100 ug/mL)



[View online »](#)

**ORF Nucleotide Sequence:**

>MG208371 representing NM\_130882  
 Red=Cloning site Blue=ORF Green=Tags(s)

TTTTGTAATACGACTCACTATAGGGCGGCCGGAATTCGTCGACTGGATCCGGTACCGAGGAGATCTGCC  
 GCC**CGGATCGCC**

ATGCTACAGCTATGTCTGTCTGGCTGGGAATGGGGTCCCTGACTGCCTCTCCGTGGCATCTACTGCTGC  
 TGGGAGGGGCATCTTGGATTCTAGCCCGAATTCTGGCCTGGATCTATGCCTTCTATGACAACTGCAGTCG  
 CCTTCGTTGCTTCCCTCAGCCCCCTAAACCGAGCTGGTCTGGGGTCACTTGGCCTTGATGAAGAACAAC  
 GAGGAAAGCATGCAGTTCATAACACATCTGGGCCATGACTTCCGTGATGTCCACCTCTCTGGGTTGGAC  
 CTGTGTACCCAATCCTGCGACTCGTCCACCCGAATTCATTGCTCCCTGCTCCAAGCCTCAGCTGCTGT  
 TGCACCCAAGGAAATGACTCTCTATGGCTTCTGAAGCCCTGGCTGGGGGATGGGCTCCTGATGAGTGT  
 GGTGACAAAGTGGAGCCACCACCGACGCTGCTGACACCTGCCTTCACTTTGACATCCTGAAGTCTATG  
 TGAAGATTTTTAAACAAGAGTGTGAACATCATGCATGCTAAGTGGCAGTGCCTGGCCTCAAGGGCACTTC  
 CCGTCTGGACATGTTTGAACACATCAGCCTCATGACCTTGACAGCCTGCAGAAGTGCATCTTCAGTGT  
 GACAGCAACTGCCAAGAGTCTGACAGCAAATACATTGCTGCAATCCTGGAATAGCTCCCTGTAGTGA  
 AACGGCACCGCCAGCCCTTCTGTACTTGGACCTCCTGTACTATCTACTGCTGATGGGCGTCGCTCCG  
 CAAAGCCTGCGACCTGGTGCACAACTTCACAGATGCTGTGCATCAGGGAGAGACGCAGCACCTCAATACG  
 CAGGGTGTGAATTCCTAAAGGCCAAGGCTAAGACCAAACTTTAGACTTTATTGATGTTCTCTTGTATGG  
 CTGAGGATGAACATGGTAAGGGACTATCGAATGAGGACATCCGAGCAGAGGCTGACACCTCATGTTTGG  
 AGGCCATGACACCACCACAGTGCCTCTCTGGATTCTCTACAACCTGGCGAGGCACCCAGAATACCAG  
 GAGCGTCCCGCAGGAGGTTTCAAGGAGCTGCTGAGGGACCGAGACTCCGAGGAGATTGAATGGGACGACC  
 TGGCCAGTACCCTTCTGACCATGTGCATCAAGGAGAGTCTGCGGCTGCATCCCCGATCTTATTAAT  
 CTCCCGATGCTGCACCCAGGACATTCTGCTGCCAGATGGCCGGGCCATCCCAAAGGGAACATCTGTGTC  
 ATCAGCATTTTTCGGGTTCAACCAACCTTCAGTCTGGCCAGACCTGAGGTCTACAACCCCTTACAGT  
 TTGACCCAGAAAACCCACAGAAAAGGCCACCTCTGGCTTTTATCCCTTCTCAGCGGGGACCAGGAACTG  
 CATAGGACAGACTTTCGCCATGAGCGAGATAAAGGTGGCGCTGGCGCTGACCCTGCTGCGCTTCCGCATC  
 CTGCCAGACGACAAGGAGCCGCGCCGGAAGCCAGAGCTGATCCTGCGCGGAGGGCGGGCTGTGGCTGC  
 GGGTGGAGCCGCTGAGCGCCGGCGCACAG

**ACGCGTACGCGGCCGCTCGAG** - GFP Tag - GTTTAA

**Protein Sequence:**

>MG208371 representing NM\_130882  
 Red=Cloning site Green=Tags(s)

MLQLCLSWLGMGSLTASPWHL LLLGGASWILARILAWIYAFYDNC SRLRCFPQPPKPSWFWGHLALMKNN  
 EESMQFITHLGHDFRDVHL SWVGPVYPIRLVHPNFIAPLLQASAAVAPKEMTL YGFLKPWLDGLLMSA  
 GDKWSHHRRLLTPAFHFDILKSYVKIFNKSVNIMHAKWQCLASKGTSRLDMFEHISLMTLDSLQKCIFSV  
 DSNCQESDSKYIAAILELSSLVVKRHRQPFLYLDLLYYLTADGRRFRKACDLVHNFTDAVIRRRSTLNT  
 QGVEFLKAKAKTKLDFIDVLLMAEDEHGKLSNEDIRAEADTFMFGGHDTTTSALSWILYNLARHPEYQ  
 ERCRQEVQELLRDSEIEWDDLAQLPFLTMCIKESLRLHPPVLLISRCTQDILLPDGRAIPKGNICV  
 ISIFGVHNPVSWPDPEVYNPFRFDPENPQKRPLAFIPFSAGTRNCIGQTFAMSEIKVALALTLRFRI  
 LPDDKEPRRKPELILRAEGLWLRVEPLSAGAQ

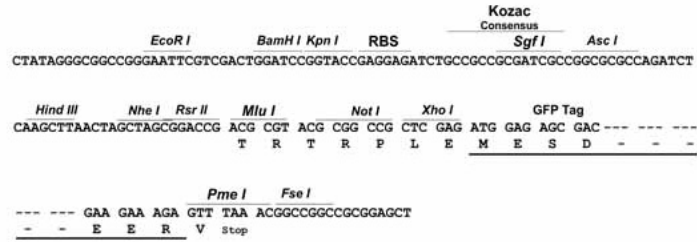
**TRTRPLE** - GFP Tag - V

**Restriction Sites:**

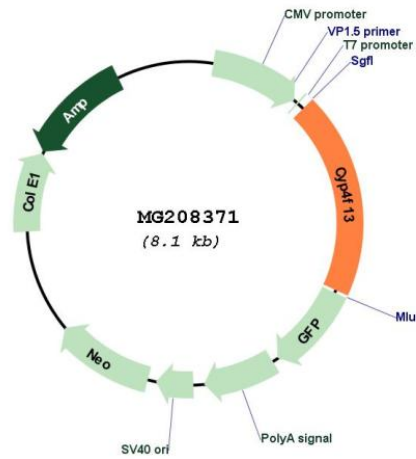
Sgfl-MluI

Cloning Scheme:

Cloning sites used for ORF Shutting:



Plasmid Map:



ACCN:	NM_130882
ORF Size:	1569 bp
OTI Disclaimer:	The molecular sequence of this clone aligns with the gene accession number as a point of reference only. However, individual transcript sequences of the same gene can differ through naturally occurring variations (e.g. polymorphisms), each with its own valid existence. This clone is substantially in agreement with the reference, but a complete review of all prevailing variants is recommended prior to use. <a href="#">More info</a>
OTI Annotation:	This clone was engineered to express the complete ORF with an expression tag. Expression varies depending on the nature of the gene.
Components:	The ORF clone is ion-exchange column purified and shipped in a 2D barcoded Matrix tube containing 10ug of transfection-ready, dried plasmid DNA (reconstitute with 100 ul of water).
Reconstitution Method:	<ol style="list-style-type: none"><li>1. Centrifuge at 5,000xg for 5min.</li><li>2. Carefully open the tube and add 100ul of sterile water to dissolve the DNA.</li><li>3. Close the tube and incubate for 10 minutes at room temperature.</li><li>4. Briefly vortex the tube and then do a quick spin (less than 5000xg) to concentrate the liquid at the bottom.</li><li>5. Store the suspended plasmid at -20°C. The DNA is stable for at least one year from date of shipping when stored at -20°C.</li></ol>
RefSeq:	<a href="#">NM_130882.1</a> , <a href="#">NP_570952.1</a>
RefSeq Size:	1731 bp
RefSeq ORF:	1572 bp
Locus ID:	170716
Cytogenetics:	17 B1