

Product datasheet for **MG208356**

Nsun2 (BC013625) Mouse Tagged ORF Clone

Product data:

Product Type:	Expression Plasmids
Product Name:	Nsun2 (BC013625) Mouse Tagged ORF Clone
Tag:	TurboGFP
Symbol:	Nsun2
Synonyms:	D13Wsu123e; Misu
Mammalian Cell Selection:	Neomycin
Vector:	pCMV6-AC-GFP (PS100010)
E. coli Selection:	Ampicillin (100 ug/mL)



[View online »](#)

ORF Nucleotide Sequence:

>MG208356 representing BC013625
 Red=Cloning site Blue=ORF Green=Tags(s)

TTTTGTAATACGACTCACTATAGGGCGGCCGGAATTCGTCGACTGGATCCGGTACCGAGGAGATCTGCC
 GCC**CGGATCGCC**

ATGGTGGTAAACCATGACGCATCCAGCATACCTAGACTTACAGTAGATGTGGACGGAAGGAAAGAGATTC
 TCTTCTATGATCGAATTTTATGTGATGTCCCTTGCACTGGCGATGGCACAATGAGAAAAACATTGATGT
 CTGGAAGAAATGGACAACCTTAAACAGCTTGACGCTCCATGGCCTGCAGCTTCGGATTGCAACTCGAGGT
 GCTGAGCAGCTGGCGGAAGGTGGCAGGATGGTGTATTCCACGTGTTCTTGAACCCCGTGGAGGATGAAG
 CAGTGATCGCAGCTCTGCTAGAGAAGAGTGAAGGAGCTTTGAGCTTGTGATGTGTCTGCTGAGTTGCC
 AGGACTGAAGTGGATGCCTGGAGTCTCACAGTGGAAAGTTCATGACTAGAGACGGGAGTGGTTTGCAGAC
 TGGCATGAGGTTCCCGAGGCAGGCATACACAAATCCGACCTACCATGTTCCACCAACGGACCTGGAGA
 AGCTACAGGCAATGCATCTAGAGCGATGCCTTCGAATCCTGCCCCATCATCAGAATACTGGAGGGTTCTT
 TGTGGCAGTATTGGTCAAGAAAGCACCAATGCCGTGGAACAAACGTGAGCCCAAGGTCCAGAATAAATCT
 GCAGAAGCCAGAGAACCCAGGGTATCCAGCCATGTGGCTGCCACAGAGGGAAATCCCACTGACCAGTCTG
 AGCTGGAAGTCAAGATGATAAAGTGGAGTGGTGAAGTCAAGAAACAGCTCACAACACTGAGAACACAGAGAG
 CAATGAGAAGAAAGATGGCGTGTGTGGCCCTCCTCCATCAAAGAAAATGAAGTTGTTTGGATTTAAAGAA
 GATCCATTTGATTCATTCCTGAAGATGATCCTTTATTCCACCTATTGAGAAGTTTTATGCCTTGGATC
 TTTCATTTCCCGAGGATGAATCTGTTAACCCGAACCACAGAAGGAAAGAAGCGGCAGCTTTATATGGTCTC
 CAAGGAGCTGAGGAATGTACTGTGAACAACAGCGAGAAGATGAAGGTCATTAACACTGGGATAAAAATC
 TGGTGTGCGAAATAACAGTGGTGAAGAATTCGATTGTGCATTCCGTTTGGCACAGGAGGGAATATATACAT
 TGTATCCATTTTCAATTCAAGAATCATCACTGTATCAATGGAAGACGTGAAGACACTGTTGACCCAGGA
 GAACCCATTCTTTAGAAAACCTGAGCAGTGAAGCCCTACAGTCAAGTCAAGGACCTCGCAAAGGGAAGTGT
 GTGCTGAAGTATGAGCCAGATTCTGCGAATCCAGACACCCCTCCAGTGCCCATCGTGTGTGGGTGGC
 GGGGAAAGGCCTCTATTGAACTTTTGTGCCAAAAATGAGCGGCTTATTATCTCAGGATGATGGGTCT
 GGAGGTAAGGAGAAAAGAAGAAAGAGGGAGTCACTTACCAATGAGAATGCTGCCAGCCAGAGCAG
 CCTGGAGATGAGGATGCCAAGCAGACAGCACAAGACCCCTGCGTCCAGACTCCGTCCTGGCTGTGATG
 CAGCTGCAGCTGAGCCATCCCG

ACGCGTACGCGGCCGCTCGAG - GFP Tag - GTTTAA

Protein Sequence:

>MG208356 representing BC013625
 Red=Cloning site Green=Tags(s)

MVNVHDASSIPRLTVDVDRKEILFYDRILCDVPCSGDGTMRKNIDVWKKWTTLNSLQLHGLQLRIATRG
 AEQLAEGGRMVYSTCSLNPVEDEAVIAALLEKSEGALELADVSAELPGLKWMPPGVSQWKVTRDGGQWFAD
 WHEVPQGRHTQIRPTMFPPTDLEKLQAMHLERCLRILPHHQNTGGFFVAVLVKKAPMPWNKRQPKVQNK
 AEAREPRVSSHVAATEGNPSDQSELESQMITGAGDSETAHNTENTESNEKKGVCPPPSKMKMLFGFKE
 DPFVFIPEDDPLFPPIEKFYALDPSFPRMNLTRTTEGKKRQLYMVSKELRNVLNNSEKMKVINTGIKV
 WCRNNSGEEFDCAFRLAQEGIYLYPFINSRIITVSMEDVKTLLTQENPFFRKLSEAYSQVKDLAKGSV
 VLKYEPPSANPDTLQCPVLCGWRGKASIRTFVPKNERLHYLRMMGLEVLGKKEGKGVILTNENAASPEQ
 PGDEDAKQTAQDPCVPDPSVPGCAAAAAPSR

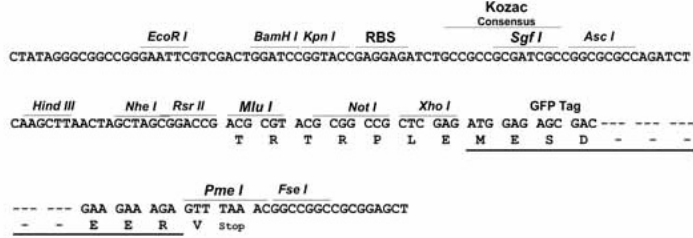
TRTRPLE - GFP Tag - V

Restriction Sites:

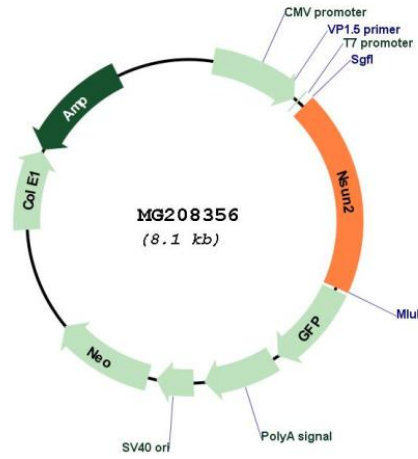
Sgfl-MluI

Cloning Scheme:

Cloning sites used for ORF Shutting:



Plasmid Map:



ACCN:	BC013625
ORF Size:	1565 bp
OTI Disclaimer:	The molecular sequence of this clone aligns with the gene accession number as a point of reference only. However, individual transcript sequences of the same gene can differ through naturally occurring variations (e.g. polymorphisms), each with its own valid existence. This clone is substantially in agreement with the reference, but a complete review of all prevailing variants is recommended prior to use. More info
OTI Annotation:	This clone was engineered to express the complete ORF with an expression tag. Expression varies depending on the nature of the gene.
Components:	The ORF clone is ion-exchange column purified and shipped in a 2D barcoded Matrix tube containing 10ug of transfection-ready, dried plasmid DNA (reconstitute with 100 ul of water).
Reconstitution Method:	<ol style="list-style-type: none">1. Centrifuge at 5,000xg for 5min.2. Carefully open the tube and add 100ul of sterile water to dissolve the DNA.3. Close the tube and incubate for 10 minutes at room temperature.4. Briefly vortex the tube and then do a quick spin (less than 5000xg) to concentrate the liquid at the bottom.5. Store the suspended plasmid at -20°C. The DNA is stable for at least one year from date of shipping when stored at -20°C.
RefSeq:	BC013625 , AAH13625
RefSeq Size:	2325 bp
RefSeq ORF:	1565 bp
Locus ID:	28114
Cytogenetics:	13 35.55 cM
Gene Summary:	RNA methyltransferase that methylates tRNAs, and possibly RNA polymerase III transcripts. Methylates cytosine to 5-methylcytosine (m5C) at positions 34 and 48 of intron-containing tRNA(Leu)(CAA) precursors, and at positions 48, 49 and 50 of tRNA(Gly)(GCC) precursors (By similarity). May act downstream of Myc to regulate epidermal cell growth and proliferation. Required for proper spindle assembly and chromosome segregation, independently of its methyltransferase activity.[UniProtKB/Swiss-Prot Function]