

Product datasheet for **MG208340**

Gtf2h1 (BC052837) Mouse Tagged ORF Clone

Product data:

Product Type:	Expression Plasmids
Product Name:	Gtf2h1 (BC052837) Mouse Tagged ORF Clone
Tag:	TurboGFP
Symbol:	Gtf2h1
Synonyms:	p62, 62kDa
Mammalian Cell Selection:	Neomycin
Vector:	pCMV6-AC-GFP (PS100010)
E. coli Selection:	Ampicillin (100 ug/mL)



[View online »](#)

ORF Nucleotide Sequence:

>MG208340 representing BC052837
 Red=Cloning site Blue=ORF Green=Tags(s)

TTTTGTAATACGACTCACTATAGGGCGGCCGGAATTCGTCGACTGGATCCGGTACCGAGGAGATCTGCC
 GCC**CGGATCGCC**

ATGGCAGAGAGAATTGCTTGGGCACCTGAAGGCAAAGACAGATTTACAATCAGCCATATGTATGCAGATA
 TTAATGCCAGAAAATCAGTCCAGAGGGAAAAGCTAAAATACAACCTCAGCTGGTCTGCATGCAGGGGA
 CACAACAACTTCCATTTTTCCAACGAAAGCACGGCAGTAAAAGAACGGGATGCAGTGAAGGACCTCCTT
 CAGCAGCTGCTGCCAAAGTTCAAGCGGAAAGCTAATAAAGAGCTGGAGGAGAAGAACAAGATGCTCCAAG
 AAGATCTGTTTTATTCCAACCTATAAAGACCTTGTGTGAGCCAAGTATCAGTGTGAGGAATTCTG
 GGCCAATCGTTTTAAATGTGAATGCAACAGATAGTTCTACATCCAGTCACAAGCAGGATGTTGGTATTCTG
 GCAGCATTTCTGGCTGATGTCCGGCCCCAACGGATGGCTGTAATGGTCTGAGATATAATTTAATTCTG
 ATATCATTGAATCTATATTTAGGACCTATCCAGCAGTAAAAATGAAATATGCAGAACTGTACCACAAA
 CATGACAGAAAAGGAGTTCTGGACAGCTTTTTCCAGTCCATTATTTTACAGGGACCGACTAAATACA
 GGATCGAAGGACCTCTTTCAGAAATGTGCCAAAATAGATGAGAAGGGATTAACAAATGGTTTCATTAG
 GAGTGAACCAATGCTAGATTTGACATCGTTGGAAGATAAGCCATTAGACGAGGGCTATGGCATTTC
 CTCTGTGCCATCTACTTCCAATTCAAAATCCATAAAGGAGAATAGTAATGCTGCCATCATCAAAAGGTTT
 AACCACCACAGTGCCATGGTCTGGCTGCTGGTCTCAGGAAACAACAAGCACAATGGACAGAATGGTG
 AGCCCAGCAGCGTGGATGGGAATTTCTGGGGATACAGACTGCTTTCAGCCAGCAGTCAAAGGGCAAAGTT
 GCAGGAGTCCATTGAATATGAAGACTTGGGAAACAACAATTCTGTGAAAACGATTGCACTGAATCTCAAG
 AAGTCAGACAGGTATTACCATGGTCTACTCCAATTCAGTCACTGCAGTATGCAACAAGTCAGGATCTCAAG
 TTAACTTTTTCAAAGTATTAGACAAGAAATGGAAGCTTACACACCCAAGTTAACTCAGGTTCTCTCAAG
 CAGTGCTGCTAGTACACCATCACAGCCCTGTACCTGGAGGAGCTCTTATGCAGGGAGGGACACAGCAA
 GCCGTAACACAGATGGTCCAAACGATATTGAGTCTGAATTGAAACACTTGTATGTGGCTGTTGGGGAAC
 TTCTGCGGCATTTTTGGTCTTGTCTTCTGTTAATACACCATTCTAGAAGAAAAGGTAGTAAAAATGAA
 GAGTAATTTGGAACGGTTCCAAGTTACAAGCTCTGCCATTCCAAGAAAAGATTCGGAGGCAGTATTTA
 AGCACAATCTGGTAAGTCACATAGAAGAGATGCTGCAGACAGCCTACAACAAGCTCCACGCGTGGCAAT
 CCCGGCGCTGATGAAGAAGCG

AG**CGGACCG**ACGCGTACGCGGCCGCTCGAG - GFP Tag - GTTTAA

Protein Sequence:

>MG208340 representing BC052837
 Red=Cloning site Green=Tags(s)

MAERIAWAPEGKDRFTISHMYADIKCQKISPEGKAKIQLQLVLHAGDITNFHFSNESTAVKERDAVKDLL
 QQLLPKFKRKANKELKRNRLQEDPVLFLYKDLVVSQVISAEEFWANRLNVNATDSSTSSHKQDVGIS
 AAFLADVRPQTDGNCGLRYNLSDIIESIFRTYPAVKMKAETVPHNMTEKEFWTRFFQSHYFHRDLNT
 GSKDLFAECAKIDEKGLKTMVSLGVKNPMLDLTSLDKPLDEGYGISSVPSTSNKSIKENSNAAIKRF
 NHHSAMVLAAGLRKQQAQNGQNGEPSSVDGNSGDTDCFQPAVKRAKLQESIEYEDLGNNSVKTIALNLK
 KSDRYHYGPTPIQSLQYATSQDIINSFQSIHQEMEAYTPKLTQVLSSSAASSTITALSPGGALMQGGTQQ
 AVNQMPNDIQSELKHLVYAVGELLRHFWSFCFPVNTPFLEEKVVKMKNLRFQVTKLCPFQEKIRRQYL
 STNLVSHIEEMLQTAYNKLHAWQSRRLMKKT

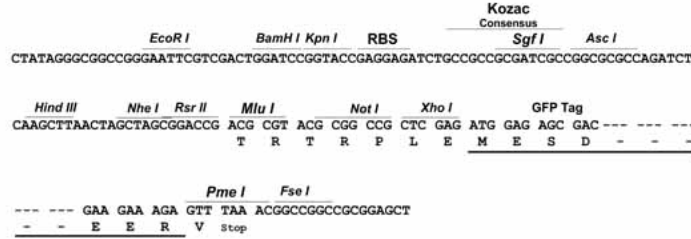
SGP**TRRRLE** - GFP Tag - V

Restriction Sites:

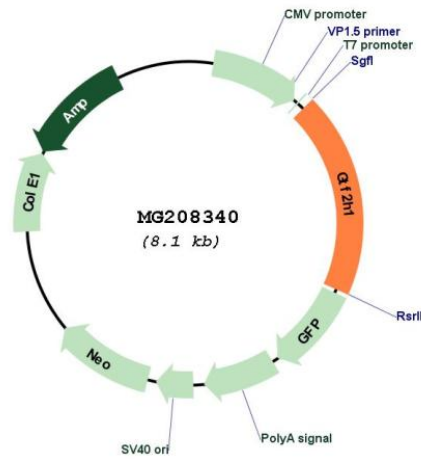
Sgfl-RsrII

Cloning Scheme:

Cloning sites used for ORF Shuttling:



Plasmid Map:



ACCN:	BC052837
ORF Size:	1565 bp
OTI Disclaimer:	<p>Due to the inherent nature of this plasmid, standard methods to replicate additional amounts of DNA in E. coli are highly likely to result in mutations and/or rearrangements. Therefore, OriGene does not guarantee the capability to replicate this plasmid DNA. Additional amounts of DNA can be purchased from OriGene with batch-specific, full-sequence verification at a reduced cost. Please contact our customer care team at custsupport@origene.com or by calling 301.340.3188 option 3 for pricing and delivery.</p> <p>The molecular sequence of this clone aligns with the gene accession number as a point of reference only. However, individual transcript sequences of the same gene can differ through naturally occurring variations (e.g. polymorphisms), each with its own valid existence. This clone is substantially in agreement with the reference, but a complete review of all prevailing variants is recommended prior to use. More info</p>
OTI Annotation:	This clone was engineered to express the complete ORF with an expression tag. Expression varies depending on the nature of the gene.
Components:	The ORF clone is ion-exchange column purified and shipped in a 2D barcoded Matrix tube containing 10ug of transfection-ready, dried plasmid DNA (reconstitute with 100 ul of water).
Reconstitution Method:	<ol style="list-style-type: none"> 1. Centrifuge at 5,000xg for 5min. 2. Carefully open the tube and add 100ul of sterile water to dissolve the DNA. 3. Close the tube and incubate for 10 minutes at room temperature. 4. Briefly vortex the tube and then do a quick spin (less than 5000xg) to concentrate the liquid at the bottom. 5. Store the suspended plasmid at -20°C. The DNA is stable for at least one year from date of shipping when stored at -20°C.
RefSeq:	BC052837 , AAH52837
RefSeq Size:	2203 bp
RefSeq ORF:	1565 bp
Locus ID:	14884
Cytogenetics:	7 B3
Gene Summary:	<p>Component of the general transcription and DNA repair factor IIF (TFIIF) core complex, which is involved in general and transcription-coupled nucleotide excision repair (NER) of damaged DNA and, when complexed to CAK, in RNA transcription by RNA polymerase II. In NER, TFIIF acts by opening DNA around the lesion to allow the excision of the damaged oligonucleotide and its replacement by a new DNA fragment. In transcription, TFIIF has an essential role in transcription initiation. When the pre-initiation complex (PIC) has been established, TFIIF is required for promoter opening and promoter escape. Phosphorylation of the C-terminal tail (CTD) of the largest subunit of RNA polymerase II by the kinase module CAK controls the initiation of transcription.[UniProtKB/Swiss-Prot Function]</p>