

Product datasheet for **MG208328**

Rod1 (BC006638) Mouse Tagged ORF Clone

Product data:

Product Type:	Expression Plasmids
Product Name:	Rod1 (BC006638) Mouse Tagged ORF Clone
Tag:	TurboGFP
Symbol:	Rod1
Synonyms:	MGC11742
Mammalian Cell Selection:	Neomycin
Vector:	pCMV6-AC-GFP (PS100010)
E. coli Selection:	Ampicillin (100 ug/mL)



[View online »](#)

ORF Nucleotide Sequence:

>MG208328 representing BC006638
 Red=Cloning site Blue=ORF Green=Tags(s)

TTTTGTAATACGACTCACTATAGGGCGGCCGGAATTCGTCGACTGGATCCGGTACCGAGGAGATCTGCC
 GCC**GCGATCGCC**

ATGAACAGCTCGACTTCTGCAGCTAATGGGAATGACAACAAGAAATTTAAAGGAGATAGACCTCCCTGTT
 CGCCTTCCCGTGTCTCCATCTTCGAAAAATCCATGTGATGTCACCGAAGCAGAGGTCATATCATTAGG
 TCTACCATTTGGCAAAGTAACTAATCTTTTGATGTTGAAAGGAAAAAGCCAGGCCTTTTATAGAAATGGCT
 TCTGAAGAAGCTGCTGTTACTATGATAAATTATTACACTCTGTTACTCCTCATCTTCGAAGTCAGCCTG
 TTTATATCCAGTATTCCAATCACCGAGAAGCTTAAGACTGACAATCTGCCTAATCAGGCTAGAGCCCAAGC
 TGCAGTGCAGGCTGTGAGTGCAGTCCAGTCCAGGAACTGTCCCTTCTGGAGCTACTGCAATGAAGGC
 ACATTGCTACCTGGGCAGAGCCCTGTGCTCCGGATAATTATTGAAAACCTATTTTACCCTGTCACCTGG
 AAGTTCTCCATCAGATATTTTCTAAATTTGGCAGGTTGGAAGATTATCACCTTACAAGAATAATCA
 GTTCAAGCCTTGCTTCAGTATGCCGACCCAGTGAATGCGCAGTATGCCAAAATGGCTCTGGATGGCCAG
 AATATCTACAATGCGTGTGCACTCTCCGTATTGACTTCTCCAAGCTCACAGCCTTAATGTGAAATACA
 ATAATGACAAAAGCAGAGACTTCACTCGCTTAGACCTTCTACTGGTGACGGCCAGCCATCTCTTGAACC
 TCCTATGGCTGTGCTTTTGGTGACCCGGGATAATGTCTCTCCATATGCAGGGGCTGTGGCTTTGCC
 CCAGCCATCGCATTTCTCAAGCAGCAGGTCTGTCTGTCCAGCTGTTCCCGGAGCCCTTGGTCTCTCA
 CACTTACCTCCTGTGCTGTCAGTGAAGGATGGCCATTCTGGGGCAAGTGGTATGCCTGGGAATCTGT
 TCTGCTGGTCACCAACCTCAATCCTGACTTTATCACACCATGGGCTTTTATCCTATTTGGAGTGTAT
 GGTGAGTACATCGAGTGAAGATTATGTTTAAACAAGAAAAGAAAACGCCTTGGTGCAGATGGCCGATGCGA
 GTCAAGCCAGCTAGCAATGAACCACCTAAGTGGTCCAGAGGCTCTATGGAAAAGTACTTCCGGCTACACT
 GTCCAAAACATCAAGCCGTCCAGCTCCCTAGAGAGGGACAGGAAGACCAAGGTCTGACCAAGGACTTCAGC
 AATAGTCCCTGCATCGCTTTAAAAAGCCGGCTCAAAGAATTTCCAAAATATCTTCCCTCCATCAGCCA
 CACTTCATCTTTCCAACATTCCTCCTTCTGTGACAATGGATGACCTGAAGAACCTGTTACAGAAAGCTGG
 ATGCTCAGTGAAGGCTTTAAGTTCTTCCAGAAAGACCGTAAGATGGCTCTCATTGAGTTGGGATCTGTG
 GAAGAAGCAATCCAGGCTCTATTGAGCTTCAATCATGACCTTGAGAGAAATCACCACCTCAGAGTTT
 CCTTCTCAAAAATCCACCATC

ACGCGTACGCGGCCGCTCGAG - GFP Tag - GTTTAA

Protein Sequence:

>MG208328 representing BC006638
 Red=Cloning site Green=Tags(s)

MNSSTSAANGNDNKKFKGDRPPCSPSRVLHLRKPICDVTEAEVLSLGLPFGKVTNLLMLKGKSQAFLEMA
 SEEAAVTMINYYPVTPHLRSQPVIYIQYSNHRELKTDNLPNQARAQAALQAVSAVQSGNLSLPGATANEG
 TLLPGQSPVLRRIIENLFYPVTLEVLHQIFSKFGTVLKIITFTKNNQFQALLQYADPVNAQYAKMALDGQ
 NIYNACCTLRIDFSKLTSLNVKYNNDKSRDFTRLDLPTGDGQPSLEPPMAAAFAPGIMSSPYAGAAGFA
 PAIAFPQAAGLSVPAVPGALGPLTLTSSAVSGRMAIPGASGMPGNSVLLVTNLNPDFITPHGLFILFGVY
 GDVHRVKIMFNKKENALVQMADASQAQLAMNHLGQRLYGKVLRLATLSKHQAVQLPREGQEDQGLTKDFS
 NSPLHRFKKPGSKNFQNIFFPSATLHLSNIPPSVTMDDLKNLFTAGCSVKAFKFFQKDRKMALIQLSV
 EEAIQALIELHNHDLGENHHLRVSFSKSTI

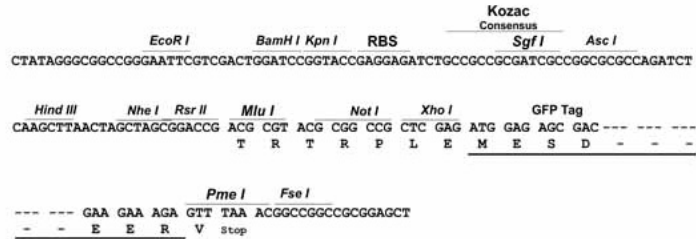
TRTRPLE - GFP Tag - V

Restriction Sites:

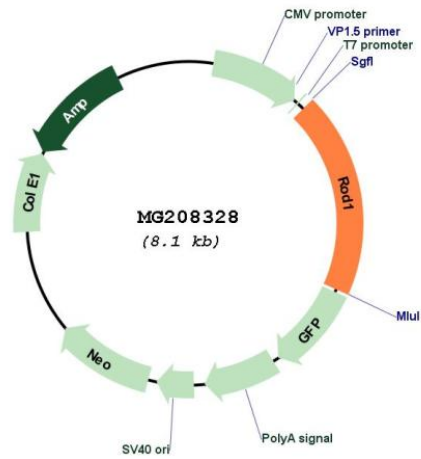
Sgfl-MluI

Cloning Scheme:

Cloning sites used for ORF Shutting:



Plasmid Map:



ACCN:	BC006638
ORF Size:	1562 bp
OTI Disclaimer:	The molecular sequence of this clone aligns with the gene accession number as a point of reference only. However, individual transcript sequences of the same gene can differ through naturally occurring variations (e.g. polymorphisms), each with its own valid existence. This clone is substantially in agreement with the reference, but a complete review of all prevailing variants is recommended prior to use. More info
OTI Annotation:	This clone was engineered to express the complete ORF with an expression tag. Expression varies depending on the nature of the gene.
Components:	The ORF clone is ion-exchange column purified and shipped in a 2D barcoded Matrix tube containing 10ug of transfection-ready, dried plasmid DNA (reconstitute with 100 ul of water).
Reconstitution Method:	<ol style="list-style-type: none">1. Centrifuge at 5,000xg for 5min.2. Carefully open the tube and add 100ul of sterile water to dissolve the DNA.3. Close the tube and incubate for 10 minutes at room temperature.4. Briefly vortex the tube and then do a quick spin (less than 5000xg) to concentrate the liquid at the bottom.5. Store the suspended plasmid at -20°C. The DNA is stable for at least one year from date of shipping when stored at -20°C.
RefSeq:	BC006638 , AAH06638
RefSeq Size:	3417 bp
RefSeq ORF:	1562 bp
Locus ID:	230257
Cytogenetics:	4 B3
Gene Summary:	RNA-binding protein that mediates pre-mRNA alternative splicing regulation. Plays a role in the regulation of cell proliferation, differentiation and migration. Positive regulator of EPO-dependent erythropoiesis. Participates in cell differentiation regulation by repressing tissue-specific exons. Promotes Fas exon 6 skipping. Binds RNA, preferentially to both poly(G) and poly(U) (By similarity).[UniProtKB/Swiss-Prot Function]