

Product datasheet for **MG208327**

Ccdc144b (NM_178418) Mouse Tagged ORF Clone

Product data:

Product Type:	Expression Plasmids
Product Name:	Ccdc144b (NM_178418) Mouse Tagged ORF Clone
Tag:	TurboGFP
Symbol:	Ccdc144b
Synonyms:	MGC58791
Mammalian Cell Selection:	Neomycin
Vector:	pCMV6-AC-GFP (PS100010)
E. coli Selection:	Ampicillin (100 ug/mL)



[View online »](#)

ORF Nucleotide Sequence:

>MG208327 representing NM_178418
 Red=Cloning site Blue=ORF Green=Tags(s)

TTTTGTAATACGACTCACTATAGGGCGGCCGGAATTCGTCGACTGGATCCGGTACCGAGGAGATCTGCC
 GCC**CGGATCGCC**

ATGGAAGATGTTGGTGACTTAACTCAGTCATCGGAGACAGCCTCAGAGTATGGCAGGCTCCCTGCCTA
 ATTATGAAGCTATACTGAGGCTCATTGAACGTCTCAGCCTGGAATGCAAAGATTCTGGTAGCCTATTA
 AATCCAGAATGCAATTCATTCATATAAAAGTTAATACTGAAACTGGTCACTGCAAAGTACTTCTA
 GAGAACTTCAAACAGTGGAGAATGAAGTCAACGGACTCCGTAAGAAGCTTGCAGACGCAGCAGTGAAC
 AACTCCAACAAGGACAAGAACTGCAATGTAAGTCTTAAACAAGAAGAAGAGAAGAGAAAAA
 TGTCGTCTGGTTATGACAAAATGAAGGAGCAGCTGAGAGAAAAAGAAGATCAATATAACAAAGAA
 AAAATGAAACAAAACCTTGAATTCGTGTAGGGAAGTGGATATGGACCTGAAGACTGTGAGACATAATC
 TTAACACAGTTTTAGAGGAAAGAACTGCATCGAGAGACAACCTTTTCAAGAACAGAACACCAGAATCAT
 ACAGGATGAGATTCTGGCAAATCACCTTCAACAAAAGGAGCTAAAAATGGCACAAGAAAAAATTAGC
 TCTCAGTTACAGGAAGCACCGGACCAACACCCAGTGCACGGAGAAGATGCGGGACTGCATACAAAAGC
 TTGGACTTGAATCACAAGTAAAAGAGACAGCAAGAAAGCAAGCAGAGAAAATTGAACAGTTAAAGAA
 AAATCTACTAAGTGGAGTTTGGTGTGATCTTACTGAAAAATTGGAATCTGCATCTGCCAAATATCTA
 CATCTCTATGAACAAAATCAGCTGCTTCGGCGGGAGTTACTGTCTATGAGAACAAATACAAAGGAAATGTG
 AAAAACTAAAGAAGCATAAAAAGAAGTTAGAACAAGAAGTAGTTAGCCTTAGAAGTCACATGAAAAGGAA
 TATGATAGAGTGTGGCCAAATAGAACAGTATAAATGGGAAATCGAAGAGAAGACAAGCAGGAATTGGT
 GGAAAGTTAAAACAAGTCAACCTATTCTGCAGACACAAGCAGCGTATGAAGACAAGCTAGAGAAGTTAA
 GACAGAAAACAGACGCTTCAGTGGCAACTCAGATGGAGCTCAGAAATAAGGACCTGGAGCTGAATTC
 TAAGATGAAAAGTCAAGTTGATTGTAATCAAATAGAAATGAAAACTATAAGCAGCTCTACCTAGCGGAA
 GTGAAAATTAGAAAATCATTGTCAAATAAATTAAGCAAAACAGATGAAAGACTGGCAGAGGTCAAAAACCA
 AACTTCTCCTGGAGAGAAAACAGTACCGAGCTTCCCAATACAGCATGGTGGACACAAGGCCTGCCCTGGA
 GCCCACTGTCTAGAGACAGTAATAAATTTTTCATTCCAAGAAGTTTCTCAGACGAAATCATGCTTCT
 AAGTCAGACCTCTGGCACTCAATTGAGACCATGGAAAATTGCAAGACCAAGGCTTCTGACCAGTTGTGCA
 TCTGTCTCTCATCTCCAT

ACGCGTACGCGGCCGCTCGAG - GFP Tag - GTTTAA

Protein Sequence:

>MG208327 representing NM_178418
 Red=Cloning site Green=Tags(s)

MEDVGDLTQSSETASEYGRPPCPNYEAILRLIERLSLECKDSGSLLLKIQNAIHSYKRLIQLKTGHCKVLL
 EKLQTVENEVNGLRKKLADAAREQLQQGQELCNVRFLLKQEEERKNVWVYDKMKEQLREKEDQYNKEV
 KMKQKLEIRVRELDMDLKTVRHNLNTVLEERNCIERQLFQEQNTRIIQDEILANHLHKQKELKMAQEKIS
 SQLQEAPDQHTQCTEKMRDCIQKLGLENHKLKETARKQAEKIEQLKKNLLSGVLSDDLTEKLESASAKYL
 HLYEQNQLLRRELLSMRTIQRKCEKLEKHKHKKLEQEVVSLRSHMKRNMIECGQIEQYKWEIEEKTQELV
 GKLEKQVNLFLQTQAAAYEDKLEKLRQKQNASVRTQMELEIKDLESEFSKMKSQVDCNQIEMENYKQLYLAE
 VKIRKSLSNKLSKTDERLAEVKTKLLERKQYRASQYSMDTRPALEPTCPRDSNKKFFIPRSFSDEIMLP
 KSDLWHSIETMENCKTKASDQLCICLSSLH

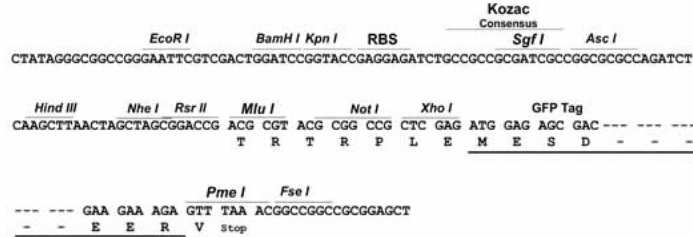
TRTRPLE - GFP Tag - V

Restriction Sites:

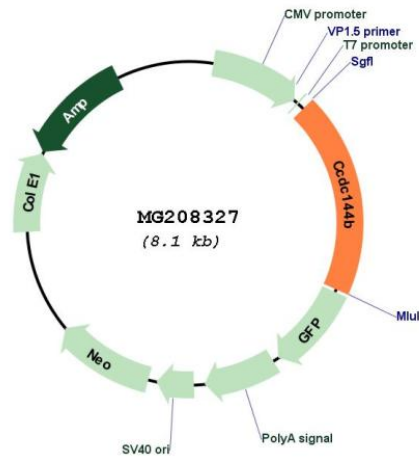
Sgfl-MluI

Cloning Scheme:

Cloning sites used for ORF Shutting:



Plasmid Map:



ACCN:	NM_178418
ORF Size:	1560 bp
OTI Disclaimer:	The molecular sequence of this clone aligns with the gene accession number as a point of reference only. However, individual transcript sequences of the same gene can differ through naturally occurring variations (e.g. polymorphisms), each with its own valid existence. This clone is substantially in agreement with the reference, but a complete review of all prevailing variants is recommended prior to use. More info
OTI Annotation:	This clone was engineered to express the complete ORF with an expression tag. Expression varies depending on the nature of the gene.
Components:	The ORF clone is ion-exchange column purified and shipped in a 2D barcoded Matrix tube containing 10ug of transfection-ready, dried plasmid DNA (reconstitute with 100 ul of water).
Reconstitution Method:	<ol style="list-style-type: none">1. Centrifuge at 5,000xg for 5min.2. Carefully open the tube and add 100ul of sterile water to dissolve the DNA.3. Close the tube and incubate for 10 minutes at room temperature.4. Briefly vortex the tube and then do a quick spin (less than 5000xg) to concentrate the liquid at the bottom.5. Store the suspended plasmid at -20°C. The DNA is stable for at least one year from date of shipping when stored at -20°C.
RefSeq:	NM_178418.3
RefSeq Size:	2506 bp
RefSeq ORF:	1563 bp
Locus ID:	241943
Cytogenetics:	3 B