

Product datasheet for **MG208325**

Galns (NM_016722) Mouse Tagged ORF Clone

Product data:

Product Type:	Expression Plasmids
Product Name:	Galns (NM_016722) Mouse Tagged ORF Clone
Tag:	TurboGFP
Symbol:	Galns
Synonyms:	mFLJ00319
Mammalian Cell Selection:	Neomycin
Vector:	pCMV6-AC-GFP (PS100010)
E. coli Selection:	Ampicillin (100 ug/mL)



[View online »](#)

ORF Nucleotide Sequence:

>MG208325 representing NM_016722
 Red=Cloning site Blue=ORF Green=Tags(s)

GACGTTGTATACGACTCCTATAGGGCGGCCGGGAATTCGTCGACTGGATCCGGTACCGAGGAGATCTGCC
 GCCGGCGCGCCC

ATGGCGCCTGTACCGCAGCCAGCAGCTGCTGCTGGTACTGAGTGCCCTAGGACTCTTGGCCCGAGGTG
 CTCGCGAGCCCCAACATCGTGTACTGCTCATGGACGATATGGGGTGGGGTGACTTGGGTGTGAATGG
 AGAACCTTCCAGAGAGACCCAAATTTAGACCGGATGGCTGCAGAAGGGATGCTTTTCCCAAGCTTCTAT
 TCTGCCAACCTTTGTGCTCACCATCTAGGGCAGCCCTGCTCACAGGACGGCTGCCCATCCGCAATGGCT
 TCTACACAACCAACGCTCATGCAAGGAATGCTTACACACCTCAGGAGATCATGGGTGGGATCCCTAACTC
 AGAGCACCTCCTGCCGAGCTCCTGAAGAAGGCAGGCTATACCAACAAGATCGTGGGCAAGTGGCATCTG
 GGTTCATAGGCCAGTTCACCCCTGAAGCATGGATTTGACGAGTGGTTTGGATCTCCCAACTGCTACT
 TTGACCGTATGACAACAAGCCAAGCCCAACATCCCTGTGTACAGGGACTGGGAGATGGTGGCAGATT
 TTATGAAGAGTTCCCAATTAACCGAAGACTGGGAAGCTAACCTCACCCAGCTCTACACAAGAAGCG
 CTGGACTTCATCCAGACACAATGCAAGGCAGAGCCCTTCTTCTCTACTGGGCCATCGACGCCACTC
 ATGCACCAAGTTTACGCCTCAAGACAGTTCTTGGGCACCAGCCTTCGAGGGCGGTATGGCGATGCTGTTCG
 GGAAATAGATGACAGTGTGGGAAGATCTTGAGCCTTCTGCAGAACTTGGGCATCAGTAAGAACACATTT
 GTCTTCTTACGTCTGATAATGGTGCAGCCCTCATTCTGCTCCCAACGAAGGTGGCAGCAACGGTCCCT
 TCCTGTGTGGGAAGCAGACGACATTTGAAGCGGGATGAGGGAGCCTGCGATCGCATGGTGGCCAGGACA
 CATTGCTGCAGGCCAGGTGAGCCACAGCTGGGAAGCATCATGGATCTCTTACCACAGCCTGTCCCTT
 GCAGGCCTGAAGCCCCCAGTGACAGGGTATTGATGGACTTGACCTCCTCCCCACCATGCTCAAGGGCC
 AGATGATGGACAGGCCCATATTTTATTACCGTGGCAACACTGTGATGGCTGCTACTCTTGGCCAGTACAA
 AGCACACCTCTGGACTTGGACCAACTCCTGGGAGGAGTTCACACAGGGCACTGACTTCTGCCCCGGGCAG
 AACGTCTCAGGAGTTACAACCCACACCCAGGAAGAACACACGGAGCTACCCTGATCTTCCACCTGGGAC
 GGGACCCAGGGGAGAGATTCCCACTCAGCTTCCACAGTACGAATACCAGGACGCCCTCAGCAGGACCAC
 CCAGGTTGTCCAGGAGCACAAAAGTCTTGGTCCCCGGACAGCCCCAGCTCAATGTGTGTAACCAAGGCT
 GTCATGAATTGGGCACCCCAAGGCTGTGAAAACTAGGGAAGTGTCTGACACCTCCTGAGTCTGTCCCTG
 AGAAGTGTCTGGGCCAT

ACGCGTACGCGGCCGCTCGAG - GFP Tag - GTTTAA

Protein Sequence:

>MG208325 representing NM_016722
 Red=Cloning site Green=Tags(s)

MAACTAAQQLLLVLSALGLLAAGAPQPPNIVLLLMDDMGWGDLGVNGEPSRETPNLDRAAEGMLFSPFY
 SANPLCSPSRAALLTGRLPINRGFYTTNAHARNAYTPQEIMGGIPNSEHLLPELLKKAGYTNKIVGKWHL
 GHRPQFHPLKHGFDEWFSPNCHFOPYDNKAKPNIPVYRDWEMVGRFYEEFPINRKTGEANLTQLYTQEA
 LDFIQTHARQSPFFLYWAIDATHAPVYASRQFLGTSLRGRYGDVREIDDSVGKILSLLQNLGISKNFT
 VFFTSDNAAALISAPNEGGSNGPFLCGKQTTFEGGMREPAIAWWPGHIAAGQVSHQLGSIMDLFTTSLSL
 AGLKPPSDRVIDGLDLLPTMLKGQMMDRPIFYRGNLMAVTLGQYKAHLWTWNSWEEFTQGTDFCPGQ
 NVSGVTTHTQEEHELPLIFHLGRDPGERFPLSFHSDEYQDALSRTTQVVQEHQKSLVPGQPQLNVCNQA
 VMNWAPPGCEKLGKCLTPPEVPEKCFWAH

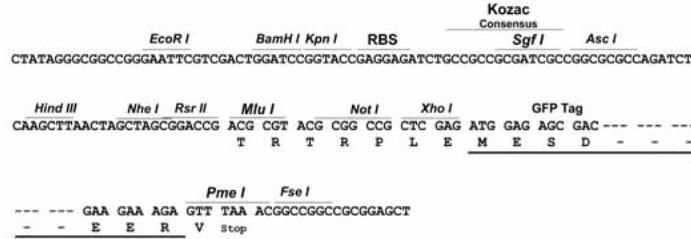
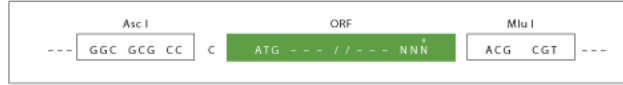
TRTRPLE - GFP Tag - V

Restriction Sites:

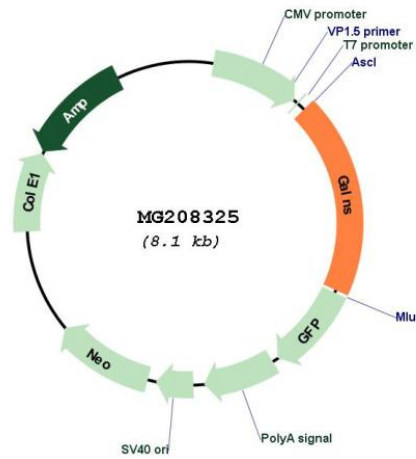
Ascl-MluI

Cloning Scheme:

Cloning sites used for ORF Shuttling:



Plasmid Map:



ACCN:	NM_016722
ORF Size:	1560 bp
OTI Disclaimer:	The molecular sequence of this clone aligns with the gene accession number as a point of reference only. However, individual transcript sequences of the same gene can differ through naturally occurring variations (e.g. polymorphisms), each with its own valid existence. This clone is substantially in agreement with the reference, but a complete review of all prevailing variants is recommended prior to use. More info
OTI Annotation:	This clone was engineered to express the complete ORF with an expression tag. Expression varies depending on the nature of the gene.
Components:	The ORF clone is ion-exchange column purified and shipped in a 2D barcoded Matrix tube containing 10ug of transfection-ready, dried plasmid DNA (reconstitute with 100 ul of water).
Reconstitution Method:	<ol style="list-style-type: none">1. Centrifuge at 5,000xg for 5min.2. Carefully open the tube and add 100ul of sterile water to dissolve the DNA.3. Close the tube and incubate for 10 minutes at room temperature.4. Briefly vortex the tube and then do a quick spin (less than 5000xg) to concentrate the liquid at the bottom.5. Store the suspended plasmid at -20°C. The DNA is stable for at least one year from date of shipping when stored at -20°C.
RefSeq:	NM_016722.4 , NP_057931.3
RefSeq Size:	2593 bp
RefSeq ORF:	1563 bp
Locus ID:	50917
UniProt ID:	Q571E4
Cytogenetics:	8 E1