

Product datasheet for **MG208314**

Riok3 (NM_024182) Mouse Tagged ORF Clone

Product data:

Product Type:	Expression Plasmids
Product Name:	Riok3 (NM_024182) Mouse Tagged ORF Clone
Tag:	TurboGFP
Symbol:	Riok3
Synonyms:	1200013N13Rik; D18Ertd331e; E130306C24Rik; Sudd
Mammalian Cell Selection:	Neomycin
Vector:	pCMV6-AC-GFP (PS100010)
E. coli Selection:	Ampicillin (100 ug/mL)



[View online »](#)

ORF Nucleotide Sequence:

>MG208314 representing NM_024182
 Red=Cloning site Blue=ORF Green=Tags(s)

TTTTGTAATACGACTCACTATAGGGCGGCCGGAATTCGTCGACTGGATCCGGTACCGAGGAGATCTGCC
 GCC**CGGATCGCC**

ATGGATCTGGTCGGAGTGTCTTCGCTGAGCCAGGGCCCGCAGCAGCTTGGGGACCCAGTAAAGTCCCAT
 GGGCTACCCTCAAACACAGTATCCTGTTCACTGACCGAGGTGATGAGTGAGGAGCTGGCTAAAGAGCT
 GCAGTTGGAAGAAGAAGCGGCTGCTTCCCTGAAGTTGTTGTTGCTGAAGGACCATTCTTTCTGGAGAA
 AACATTGACACTTCCAGTGACCTAATGCTGGCTCAGATGCTACAGATGGAATTTGACAGAGAATATGATG
 CACAGCTTAGGCGTGAGGAAAAGAAGTTCAATGGTGATAGCAAAGTTTCCATTTGTTGAAAACACTATCG
 CAAAGTTCATCCTTTGAAGACAGTGACAGCTCTGAAGACGAGGTTGACTGGCAGGACACTCGAGACGAT
 CCCTACAGACCAGCAAAGCCAATTCCTACTCCAAAAAGGGTTTTATTGGAAAAGGAAAAGACATCACCA
 CCAAGCATGATGAAGTAGTATGTGGAAGAAGAACAACAGCAAGAATGGAAAATTTGCCCTGGCTTTCA
 GGTAGGGGATGGAATTGGAATGGATTTGAAACTATCCAACCACGTTTTTAAATGCCTTAAAAACAACAGCC
 TACTCAGAAGAGCGTCGGAGCGCCGCTCCACGAGAAGAAGGAACATTCTACCGCTGAAAAAGCAGTTG
 ATCCTAAGACACGCTTACTTATGTATAAAAATGGTCAACTCTGGAATGTTGGAGACAACTACTGGCTGTAT
 TAGTACAGGAAAGGAATCTGTTGTCTTTTCATGCATATGGAGGGAGCCTGGAGGATGAAAAGGAAGATGGT
 AAGGCTATACCAACAGAAATGTGCCATCAAGGATTTTAAAAACAACCCTTAATGAGTTTAAAGATCGTGACA
 AGTACATTAAGATGATTTTCAGGTTTAAAGATCGCTTCAGTAACTAAATCCACGTAAAGATCATCCGCAT
 GTGGGCAGAGAAAAGAAATGCACAATCTTACAAGAATGCAGAAGGCTGGAATTCCTGTCCAACAGTTGTA
 CTGCTTAAAGAAGCACATTTTAGTTATGTCTTTCATTGGCCATGATCAAGTCCAGCCCCTAAATTTAAAG
 AAGTAAAGCTTAGTAATGAAGAAATGAAAGATGCCTACTATCAGACTCTTCATTTGATGCAGCAATTATA
 TAACGAATGTACCCTTGTGCATGCTGACCTCAGCGAGTATAACATGTTGTGGCATGCTGGGAAGGCTGG
 TTGATTGACGTACGTACGTACGAGCAACCCATCCTCATGGCCTGGAGTTCTTATTCGTGACTGTA
 GGAATGTTTCACAGTTCTTCCAGAAAGGAGGAGTAACGGAAGCCCTCAATGAACGGGAGCTGTTCAATGC
 TGTCTTGGCCTGAACATCTCGGCAGACAATGAAGCTGATTTCTTAGCTGAGATAGAAGCTTTGGAGAAG
 ATGAATGAAGATCACGTTTCAAGAAGCGGAGGAAAGCAGCCTCGTTTCTGAAAGATGATGGAAGCCAC
 CTGTGCTGTCTGCCGAC

ACGCGTACGCGGCCGCTCGAG - GFP Tag - GTTTAA

Protein Sequence:

>MG208314 representing NM_024182
 Red=Cloning site Green=Tags(s)

MDLVGVSSPEPGPAAAWGPSKCPWATPQNTVSCSLTEVMSEELAKELQLEEEAAAFPEVVVAEGPFI SGE
 NIDTSSDMLLAQMLQMEFDREYDAQLRREEKFNKNGDSKVSISFENYRKHVHPFEDSDSSEDEVDWQDTRDD
 PYRPAKPIPTPKKGF IGKGDITTKHDEVVCGRKN TARMENFAPGFQVGDGIGMDLKL SNHVFNALKQHA
 YSEERRSARLHEKKEHSTAEKAVDPKTRLLMYKMNVS GMLETITGCI STGKESVVFHAYGG SLEDEKEDG
 KAIPTECAIKVFKTTLNEFKNRDKYIKDDFRFKDRF SKLNPRKIIRMWAEKEMHNLTRMQKAGIPCPTVV
 LLKKHILVMSFIGHDQVPAPKLEKVKLSNEEMKDAYYQTLHLMQQLYNECTLVHADLSEYNMLWHAGKVV
 LIDVVSQSVEPHPLGLEFLFRDCRNVSQFFQKGGVTEALNERELFNAVSLNISADNEADFLAEIEALEK
 MNEDHVQKNGRKAASFLKDDGSPVLSAD

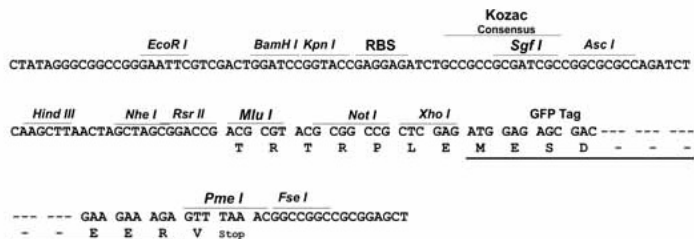
TRTRPLE - GFP Tag - V

Restriction Sites:

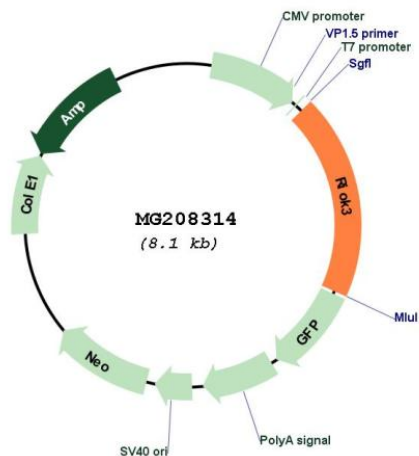
Sgfl-MluI

Cloning Scheme:

Cloning sites used for ORF Shutting:



Plasmid Map:



ACCN:	NM_024182
ORF Size:	1557 bp
OTI Disclaimer:	The molecular sequence of this clone aligns with the gene accession number as a point of reference only. However, individual transcript sequences of the same gene can differ through naturally occurring variations (e.g. polymorphisms), each with its own valid existence. This clone is substantially in agreement with the reference, but a complete review of all prevailing variants is recommended prior to use. More info
OTI Annotation:	This clone was engineered to express the complete ORF with an expression tag. Expression varies depending on the nature of the gene.
Components:	The ORF clone is ion-exchange column purified and shipped in a 2D barcoded Matrix tube containing 10ug of transfection-ready, dried plasmid DNA (reconstitute with 100 ul of water).
Reconstitution Method:	<ol style="list-style-type: none">1. Centrifuge at 5,000xg for 5min.2. Carefully open the tube and add 100ul of sterile water to dissolve the DNA.3. Close the tube and incubate for 10 minutes at room temperature.4. Briefly vortex the tube and then do a quick spin (less than 5000xg) to concentrate the liquid at the bottom.5. Store the suspended plasmid at -20°C. The DNA is stable for at least one year from date of shipping when stored at -20°C.
RefSeq:	NM_024182.3 , NP_077144.2
RefSeq Size:	3662 bp
RefSeq ORF:	1560 bp
Locus ID:	66878
UniProt ID:	Q9DBU3
Cytogenetics:	18 6.15 cM
Gene Summary:	Involved in regulation of type I interferon (IFN)-dependent immune response which plays a critical role in the innate immune response against DNA and RNA viruses. May act as an adapter protein essential for the recruitment of TBK1 to IRF3. Phosphorylates IFIH1 on 'Ser-828' interfering with IFIH1 filament assembly on long dsRNA and resulting in attenuated IFIH1-signaling. Can inhibit CASP10 isoform 7-mediated activation of the NF-kappaB signaling pathway. May play a role in the biogenesis of the 40S ribosomal subunit. Involved in the processing of 21S pre-rRNA to the mature 18S rRNA.[UniProtKB/Swiss-Prot Function]