

Product datasheet for **MG208290**

Ppat (BC023841) Mouse Tagged ORF Clone

Product data:

Product Type:	Expression Plasmids
Product Name:	Ppat (BC023841) Mouse Tagged ORF Clone
Tag:	TurboGFP
Symbol:	Ppat
Synonyms:	MGC38417
Mammalian Cell Selection:	Neomycin
Vector:	pCMV6-AC-GFP (PS100010)
E. coli Selection:	Ampicillin (100 ug/mL)



[View online »](#)

ORF Nucleotide Sequence:

>MG208290 representing BC023841
 Red=Cloning site Blue=ORF Green=Tags(s)

TTTTGTAATACGACTCACTATAGGGCGGCCGGAATTCGTCGACTGGATCCGGTACCGAGGAGATCTGCC
 GCC**CGGATCGCC**

ATGGAGCTGGAGGAGTTGGGATCCGCGAGGAATGTGGTGTGTTGGGTGCATCGCTTCTGGAGACTGGC
 CCACGCAGCTAGATGTGCCGCATGTGATCACTCTGGGACTCGTGGGGCTACAGCACCGAGGTCAGGAGAG
 CGCTGGTATTGTGACCAGTGATGGGAGTGCAGTGCCTAAATTCAGGGTGCATAAGGGAATGGGTCTTGTA
 AACCATGTTTTTACCGAAGACAATTTGAAGAAATTGTATGACTCAAACCTTGAATCGGACATACGAGGT
 ACGCCACCACGGGAAAGTGTGAGCTGGAAAACGCCAGCCATTTCGTAGTTGAGACGCTTCACGAAAAGAT
 AGCTGTGGCCATAACGGGGAACGGTGAACGCCGCTCGGTTGCGGAAGAAGCTTCTGCGGCAGGGTATT
 GGGCTTCCACGTCCTCTGATAGTGAATGATTACCCAGTTACTCGCATAACCCCTCTCAAGAAAAAG
 ATGATGCTCCAGACTGGGTAGCAAGAATTAAGAACTTAATGAAAGAAGCGCCCGCAGCATACTCCCTGGT
 TATAATGCACAGGACTTCATTTACGCGGTGCGAGATCCATATGAAATCGTCTCTCTGCATCGGGCGT
 CTTATGCCAGTCTCTGATGATAAAGACAAAGAGAAAAATCCTCAGAAACTGAAGGATGGGTGGTGTCTCT
 CAGAGTCTTGACGCTTTTATCCATCGGTGCCAGATATTGCCATGAAGTCAAACCCGGAGAAATTGTAGA
 AATATCCAGACATGGTATCAGAACTCTTGATATAAATCCAAGGTCTAACGGAGACCCAGTGGCTTTTTGT
 ATTTTTGAATATGTTATTTTGAAGACCAGATAGTATGTTTGAAGACCAATGGTTTATACAGTAAGGT
 ACCGGTGTGGTCAGCAGCTGGCAATTGAAGCACCCGTGGAGGCGGACTTGGTTAGCACAGTTCAGAGTC
 TGCTACGCCTGCAGCGCTGGGATATGCAACAAAGTGTGGGCTGCCTTATGTGGAAGTGTGTGTAAGAAC
 CGGTATGTAGGAAGAACCTTCATCAACCAACATGAGGTTAAGACAACCGGTGTTGCAAGAAGTTTG
 CGGTGTTGTGACAACTTTAAAGGCAAAAGAATCGTTCTCATAGATGATTTCGATTGTGAGGGCAATAC
 TATCTCACCCATCATAAACTCCTCAAAGAATCCGGTGCAAAAGAGGTGCACATTCGAGTCGCTTACCA
 CCAATAAAATATCCGTGCTTCATGGGAATAAACATTCTCAAAAAGAAGGCTCATAGCCAATAAGCCAG
 AATTTGATTGTCTTGACAGTACCTCGGAGCAACAGCGTTGTGTATCTGTGAGTGAAGGACTGGTTTC
 ATCTGTGCAACAAGAAATAAAATTTAAGAAGCAGAAAGTAAAAAACATGATATTGCAATTCAGAAAAAT
 GGAATGGTTTGGAAATTTTTGAAAAGACGGGACACTGTACAGCTTGCTCACTGGGCAGTACCCTGTGG
 AGCTGGAATGG

ACGCGTACGCGGCCGCTCGAG – GFP Tag – GTTTAA

Protein Sequence:

>MG208290 representing BC023841
 Red=Cloning site Green=Tags(s)

MELEELGIREECGVFGCIASGDWPTQLDVPVHITLGLVGLQHRGQESAGIVTSDGSVAPKFRVHKMGMLV
 NHVFTEDNLKLYDSNLGIGHTRYATTGKCELENCQPFVVETLHGKIAVAHNGELVNAARLRKLLRQGI
 GLSTSSDSEMITQLLAYTPPQEKDDAPDWVARIKMLKEAPAAYSLVIMHRDFIYAVRDPYGNRPLCIGR
 LMPVSDVNDKEKKSSETEGWVVSSESCFSLIGARYCHEVKPGEIVEISRHGIRLTDIIPRSNGDPVAF
 IFEYVYFARPDMSFEDQMYYTVRYRCGQQLAIEAPVEADLVSTVPESATPAALGYATKGLPYVEVLCKN
 RYVGRTFIQPNMRLRQLGVAKKFGVLSDFKGRIVLIDDSIVRGNTISPIIKLLKESGAKEVHIRVASP
 PIKYPFCMGINIPTKEELIANKPEFDCLAEYLGANSVVYLSVEGLVSSVQQEIKFKKQKVKKHDIATQEN
 GNGLEYFEKTGHCTAACLGTQYPVELEW

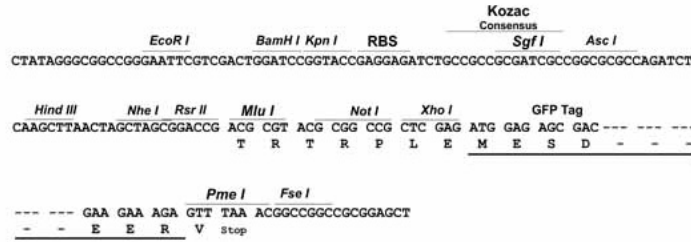
TRTRPLE – GFP Tag – V

Restriction Sites:

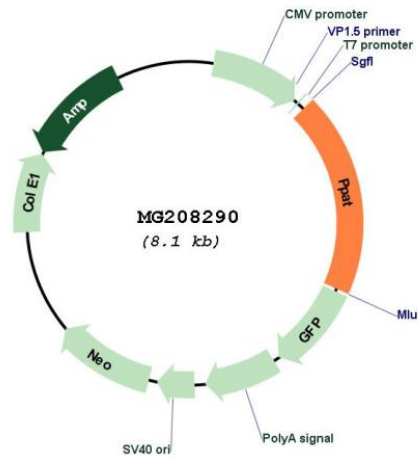
Sgfl-MluI

Cloning Scheme:

Cloning sites used for ORF Shutting:



Plasmid Map:



ACCN:	BC023841
ORF Size:	1553 bp
OTI Disclaimer:	The molecular sequence of this clone aligns with the gene accession number as a point of reference only. However, individual transcript sequences of the same gene can differ through naturally occurring variations (e.g. polymorphisms), each with its own valid existence. This clone is substantially in agreement with the reference, but a complete review of all prevailing variants is recommended prior to use. More info
OTI Annotation:	This clone was engineered to express the complete ORF with an expression tag. Expression varies depending on the nature of the gene.
Components:	The ORF clone is ion-exchange column purified and shipped in a 2D barcoded Matrix tube containing 10ug of transfection-ready, dried plasmid DNA (reconstitute with 100 ul of water).
Reconstitution Method:	<ol style="list-style-type: none">1. Centrifuge at 5,000xg for 5min.2. Carefully open the tube and add 100ul of sterile water to dissolve the DNA.3. Close the tube and incubate for 10 minutes at room temperature.4. Briefly vortex the tube and then do a quick spin (less than 5000xg) to concentrate the liquid at the bottom.5. Store the suspended plasmid at -20°C. The DNA is stable for at least one year from date of shipping when stored at -20°C.
RefSeq:	BC023841 , AAH23841
RefSeq Size:	1958 bp
RefSeq ORF:	1553 bp
Locus ID:	231327
Cytogenetics:	5 C3.3