

## Product datasheet for **MG208285**

### Uspl1 (NM\_001013378) Mouse Tagged ORF Clone

#### Product data:

Product Type:	Expression Plasmids
Product Name:	Uspl1 (NM_001013378) Mouse Tagged ORF Clone
Tag:	TurboGFP
Symbol:	Uspl1
Synonyms:	E430026A01Rik
Mammalian Cell Selection:	Neomycin
Vector:	pCMV6-AC-GFP (PS100010)
E. coli Selection:	Ampicillin (100 ug/mL)



[View online »](#)

**ORF Nucleotide Sequence:**

>MG208285 representing NM\_001013378  
 Red=Cloning site Blue=ORF Green=Tags(s)

TTTTGTAATACGACTCACTATAGGGCGGCCGGAATTCGTCGACTGGATCCGGTACCGAGGAGATCTGCC  
 GCC**CGGATCGCC**

ATGACGGATGATTCTCTGAAGATTGAAATGGTTTGGCACTGGTTGGACCAGGGACTGATGTAGGGATAT  
 CTTCACTCCCATGCTGGGGTACTTGGGAAAAAATTATGCTTCAGCTAAAGTCACAACAGACGGGCATTG  
 CCCTGCTGTAGAGCGAAAGCAAGCTAAGTGCCTTAAAACCTTACCGCATTAGCTTCCAAGAATCTGTC  
 TTTCTGTGTGAGGATCTTCAGTGCATTTATCCTTTGGGCTCTGAGTCACTTACTAATTTAATTTCTCCTG  
 ATTCAGAAGATTGCCCCTCAAGTAAGCCTCAAAAACGAAAAAGATTGGAAACCAACTGTAGGAATTC  
 ACCTCTTCCAGTACATTTAAAAAGACTAGAAGTCACATTGTCACTGATAGTGAACCAATTGTGAATGGT  
 AAATAAATGGAGAAGTGTGTGATGACTTCTCAGCAAGCTTCCAGATACCAGTGTCCAGGATCCTG  
 CCAGCACAGCTGCTTCTGTGGAGCAGAGTGGGCTTTGGAGGCTGATGATGTGGTTGTGGCCGCTACAGA  
 AGATCCTGCTACAGTTAGTGTACATCTGAGCTGGAAATGCCAGCTAAGAGCAGATGTTTACCACCTTGC  
 CAGACTCTGTGTGCCAGTGGAAAAACACCCAGGCCCTGTGCTGGTTAGACTGTATCCTGTCCAGCCCTGG  
 TGCACTTGGAGGTGTTGAGGAAGACTGTGCTGGAGGCGTCTCCAGGGAGGAGTGTGATTTTGAAGGCT  
 GTTTGAAATGTACCACCAAGCAGATGAGCTGCTGCACACCATCACCTGCATGGCGTCACAGGTGAAGAT  
 TGTAAAAAATGCATCAGAAATATTTACAGAAATAGATACCTGTTTGAATAAAGTTAGAGATGAAATTT  
 TTGCTAAACTTCAACCGAAGCTTAGATGCACATTAGGTGACATGGAAAGTCTGTGTTTGCACCTTCTGT  
 ACTGTTAAAGCTTGAACCCCATGTTGAAAGCCTCTTACATATCTTTTTCTTGGAAATTTGAATGTTCC  
 CATTGTGGACACCAGTACCAAAACAGGTGTGTGAAGAGTCTGGTACCTTACCAATATTGTTCTGTGAGT  
 GGCATCCACTCAATGCTGCCATTTTGGTCCATGTAACAGCTGCAACAGTAAATCAGAAATGAGAAAAAT  
 GGTGTTGGAAAGAGCGTCGCCATACTCATGCTGCACTTCGTGGAGGGCTTACCAAGGAGGATTTGCAA  
 CACTATGCCTTCCACTTTGAAGGAAGCCTTTATCAAGTACGTCGGTAATACAGTACCAAGCAAATAACC  
 ATTTTATAACATGGTTTTTAGATGCTGATGGGAGTTGGCTGGAGTGTGATGACCTAAAGGGTCCCTGTGC  
 TAAAGGCACGTGACCTGTGAAGTGCCAGCTTACAGAGACACATATCGTTATTTGGAAAGAAAAATCCAG  
 GTGCCAATTGAAGAAGCTGCCTGCCTTCCATGCATGAAGCCAAATGTGCAGCCTGTATCAGGAATTGAAG  
 TCCCTGGCAAC

**ACGCGTACGCGGCCGCTCGAG** – GFP Tag – GTTTAA

**Protein Sequence:**

>MG208285 representing NM\_001013378  
 Red=Cloning site Green=Tags(s)

MTDDSLKIGNLPLVPGTDVGISSLPMLGYLGKNYASAKVTTDGHCPACRAKGLSALKPYRISFQESV  
 FLCEDLQCIYPLGSESLNLI SPDSEDCPTPSKPQKRKRL ETNCRNSPLPVHSHKTRSHIVTDSEPIVNG  
 KYNGEVCDDFSASFDPD SAHQDPASTAASVEQSEALEADDVVVAATEDPATVSVTSELEMPAKSRLPLC  
 QTL CVQWKNTQALCWLDCILSALVHLEVL RKT VLEACSREECVFGR LFEMYHQADELLHTHHLHGVTGED  
 CKKLTSEIFTEIDTCLNKVRDEIFAKLQPKLRCTLGDMESPVFALPVLLKLEPHVESLFTYSFSWNFEC  
 HCGHQYQNRVKS LVTF TNIVPEWHPLNAAHFGPCNSCNSKSKQIRKMLERASPI LMLHFVEGLPRRDLQ  
 HYAFHFEGLSYQVTSVIQYQANNHFITWFLDADGSLWLECDLKGPCAKRHVTCEVPASETHIVIWERKSQ  
 VPIEEAACLPCKPNVQPVSGIEVPGN

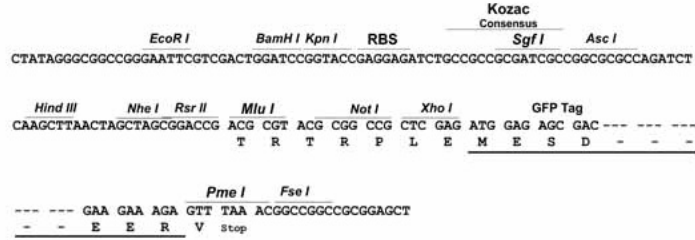
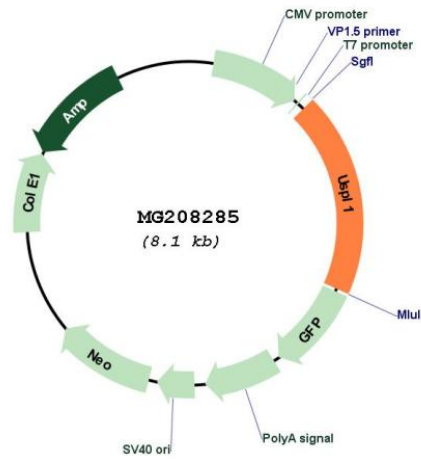
**TRTRPLE** – GFP Tag – V

**Restriction Sites:**

Sgfl-MluI

**Cloning Scheme:**

Cloning sites used for ORF Shutting:

**Plasmid Map:**

<b>ACCN:</b>	NM_001013378
<b>ORF Size:</b>	1551 bp
<b>OTI Disclaimer:</b>	The molecular sequence of this clone aligns with the gene accession number as a point of reference only. However, individual transcript sequences of the same gene can differ through naturally occurring variations (e.g. polymorphisms), each with its own valid existence. This clone is substantially in agreement with the reference, but a complete review of all prevailing variants is recommended prior to use. <a href="#">More info</a>
<b>OTI Annotation:</b>	This clone was engineered to express the complete ORF with an expression tag. Expression varies depending on the nature of the gene.
<b>Components:</b>	The ORF clone is ion-exchange column purified and shipped in a 2D barcoded Matrix tube containing 10ug of transfection-ready, dried plasmid DNA (reconstitute with 100 ul of water).
<b>Reconstitution Method:</b>	<ol style="list-style-type: none"><li>1. Centrifuge at 5,000xg for 5min.</li><li>2. Carefully open the tube and add 100ul of sterile water to dissolve the DNA.</li><li>3. Close the tube and incubate for 10 minutes at room temperature.</li><li>4. Briefly vortex the tube and then do a quick spin (less than 5000xg) to concentrate the liquid at the bottom.</li><li>5. Store the suspended plasmid at -20°C. The DNA is stable for at least one year from date of shipping when stored at -20°C.</li></ol>
<b>RefSeq:</b>	<a href="#">NM_001013378.2</a> , <a href="#">NP_001013396.2</a>
<b>RefSeq Size:</b>	3272 bp
<b>RefSeq ORF:</b>	1554 bp
<b>Locus ID:</b>	231915
<b>UniProt ID:</b>	<a href="#">Q3ULM6</a>
<b>Cytogenetics:</b>	5 G3
<b>Gene Summary:</b>	SUMO-specific isopeptidase involved in protein desumoylation. Specifically binds SUMO proteins with a higher affinity for SUMO2 and SUMO3 which it cleaves more efficiently. Also able to process full-length SUMO proteins to their mature forms (By similarity). Plays a key role in RNA polymerase-II-mediated snRNA transcription in the Cajal bodies (By similarity). Is a component of complexes that can bind to U snRNA genes (By similarity).[UniProtKB/Swiss-Prot Function]