

Product datasheet for **MG208257**

Cdc25a (NM_007658) Mouse Tagged ORF Clone

Product data:

Product Type:	Expression Plasmids
Product Name:	Cdc25a (NM_007658) Mouse Tagged ORF Clone
Tag:	TurboGFP
Symbol:	Cdc25a
Synonyms:	D9Erttd393e
Mammalian Cell Selection:	Neomycin
Vector:	pCMV6-AC-GFP (PS100010)
E. coli Selection:	Ampicillin (100 ug/mL)



[View online »](#)

ORF Nucleotide Sequence:

>MG208257 representing NM_007658
 Red=Cloning site Blue=ORF Green=Tags(s)

TTTTGTAATACGACTCACTATAGGGCGGCCGGGAATTCGTCGACTGGATCCGGTACCGAGGAGATCTGCC
 GCC**CGGATCGCC**

ATGGAAGTGGCCCGGAGCCCCCACCGCCGCCCTGTTCTTCGCTTGCAGCCCCACGCCTGCGCCG
 AGCCACGGGGAAGATGCTGTTGGCGCGTCAGCTGCTGGCGGACTGTCCCTGTACCAACCTGACGGT
 CACCATGGACCAGCTGGAAGGACTGGGCAGTGACTGTGAGAAAATGGAAGTGAGAAATAACAGCAGTCTA
 CAGAGAATGGGCTCCTCAGAATCGACCGATTAGGTTTCTGTCTAGATTCTCTGGGCCCTTGGACAGTA
 AAGAAAACCTTGAAATTTCCCTGACGAGAATAAATTCCTACCTCAGAAGCTCCTGGGATGTAGCCAGC
 CCTGAAGAGGAGCCACTCTGATTCTCTAGACCACGACACCTTTCACCTCATCGACCAGGATGAAAATAAA
 GAAAATGAAGCATTGAAATTTAAAAAGCCAATACGACCTGCATCTCGTCACATCTACGAGGAGAGTAAAG
 ATCCCTTACACACAGGCAGAATTCAGCCCCAGCTCGGATGCTATCTTCAAATGAAAGTGAATCAGGAAA
 TTTAGTCTCTTTTTATACCCAGTCACTGTAAAAGCCACTTGTCCGATGAGGATGATGGCTTCATA
 GACCTTCTGGATGGCGAGAATATGAAGAATGATGAGGAGACCCCATCATGCATGGCAAGCCTCTGGACAG
 CTCCCCTTGTCTGAGGAGACCTGCAAACCTTGCCGATCGTTGCGGGCTGTTGACTCCCCTTCCCCTG
 CGGCTCCAGCACTCGGGCGGTGTTGAAGAGAGCAGACCGGTCTCACGAGGAGCCTCTCGGGGTACAAA
 AGGAGGAAGAGTGTGCCAGCCCTGTGAAGGCGAAGGCGGATGTTCCGGAGCCCGCCAGCTTCCATCCC
 AGTCTCTATCCCTGATGTCTTCCCCAAAGGAACCATTGAGAACATTTGGACAGTGACCAAGAGACCT
 TATAGGAGATTTCTCAAAGGTTATCTCTTTAATACAGTCTCTGGGAAGCATCAGGATTTGAAATATATT
 TCTCCAGAAATATGGCATCTGTTTTGAATGGCAAGTTGCCAGTCTCATTAAAGAGTTTGTATCATTG
 ACTGCCGATACCCATATGAGTATGAAGGAGGTCACATCAAGGGTCCCGTGAATCTGCACATGGAAGAAGA
 GTTTGAAGACTTCTTACTTAAGAACCCTATTGTGCCTACTGATGGCAAGCGTGCATTGTCTGTTCCAC
 TGTGAGTTTTCTCTGAAAGAGGCCCTCGAATGTGCCGATATGTGAGAGAGAGAGATAGGCTCGGCAATG
 AGTACCCCAAGCTCCACTACCCTGAGCTGTATGTCTGAAAGGGGGATACAAGGAGTTCTTTTTGAAAGT
 CCAGTCTCACTGTGAACCCCGAGCTACCGCCAAATGCACCATGAAGACTTTAAAGAAGACCTAAAGAAG
 TTCCGCACCAAGAGCCGGACCTGGGCAGGAGAAAAGAGCAAAAGAGAGATGTACAGTCGCCTGAAGAAGC
 TC

ACGCGTACGCGGCCGCTCGAG – GFP Tag – GTTTAA

Protein Sequence:

>MG208257 representing NM_007658
 Red=Cloning site Green=Tags(s)

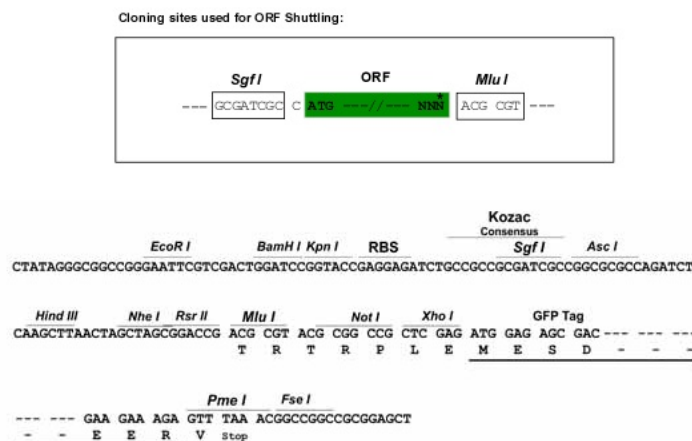
MELGPEPPHRRRLFFACSPPTAPQPTGKMLFGASAAGGLSPVTNLVTMDQLEGLGSDCEKMEVRNSSL
 QRMGSSESTDSGFCLDSPGPLDSKENLEISLTRINSLPQKLLGCSPALKRSHSDSLDHTDFHLIDQDENK
 ENEAFEFKKPIRPASRHIYEESKDPFTHRQNSAPARMLSSNESESGNFSPLFIPQSPVKATLSDEDDGFI
 DLLDGENMKNDEETPSCMASLWTAPLVMRRPANLADRCGLFDSPSPCGSSTRAVLKRADRSHEEPPRGTK
 RRSVPSPVKAKADVPEPAQLPSQSLMSSPKGTIENILDSDPRDLIGDFSKGYLFNTVSGKHQDLKYI
 SPEIMASVNLNGFASLIKEFVIIDCRYPYIEYEGGHIKAVNLHMEEVEVDFLLKNPVPDGRKRVVVFH
 CEFSSERGPRMCRYVREDRDLGNEYPKLHYPELVVLKGGYKEFFLKQSHCEPPSYRPMHHEDFKEDLKK
 FRTKSRTWAGEKSKREMSRLKKL

TRTRPLE – GFP Tag – V

Restriction Sites:

Sgfl-MluI

Cloning Scheme:



ACCN: NM_007658

ORF Size: 1542 bp

OTI Disclaimer: The molecular sequence of this clone aligns with the gene accession number as a point of reference only. However, individual transcript sequences of the same gene can differ through naturally occurring variations (e.g. polymorphisms), each with its own valid existence. This clone is substantially in agreement with the reference, but a complete review of all prevailing variants is recommended prior to use. [More info](#)

OTI Annotation: This clone was engineered to express the complete ORF with an expression tag. Expression varies depending on the nature of the gene.

Components: The ORF clone is ion-exchange column purified and shipped in a 2D barcoded Matrix tube containing 10ug of transfection-ready, dried plasmid DNA (reconstitute with 100 ul of water).

Reconstitution Method:

1. Centrifuge at 5,000xg for 5min.
2. Carefully open the tube and add 100ul of sterile water to dissolve the DNA.
3. Close the tube and incubate for 10 minutes at room temperature.
4. Briefly vortex the tube and then do a quick spin (less than 5000xg) to concentrate the liquid at the bottom.
5. Store the suspended plasmid at -20°C. The DNA is stable for at least one year from date of shipping when stored at -20°C.

RefSeq: [NM_007658.2](#)

RefSeq Size: 3643 bp

RefSeq ORF: 1545 bp

Locus ID: 12530

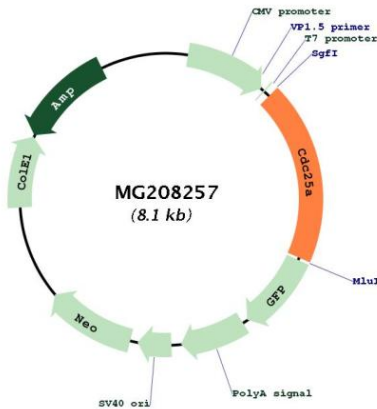
UniProt ID: [P48964](#)

Cytogenetics: 9 59.81 cM

Gene Summary:

Tyrosine protein phosphatase which functions as a dosage-dependent inducer of mitotic progression. Directly dephosphorylates CDK1 and stimulates its kinase activity. Also dephosphorylates CDK2 in complex with cyclin E, in vitro (By similarity). Phosphorylation by PIM1 leads to an increase in phosphatase activity (By similarity).[UniProtKB/Swiss-Prot Function]

Product images:



Circular map for MG208257