

Product datasheet for **MG208251**

Slc25a25 (BC037109) Mouse Tagged ORF Clone

Product data:

Product Type:	Expression Plasmids
Product Name:	Slc25a25 (BC037109) Mouse Tagged ORF Clone
Tag:	TurboGFP
Symbol:	Slc25a25
Synonyms:	MGC36388, MCSC, mKIAA1896
Mammalian Cell Selection:	Neomycin
Vector:	pCMV6-AC-GFP (PS100010)
E. coli Selection:	Ampicillin (100 ug/mL)



[View online »](#)

ORF Nucleotide Sequence:

>MG208251 representing BC037109
 Red=Cloning site Blue=ORF Green=Tags(s)

TTTTGTAATACGACTCACTATAGGGCGGCCGGGAATTCGTCGACTGGATCCGGTACCGAGGAGATCTGCC
 GCC**CGCATCGCC**

ATGGTGAGCAGTGTGTTGTGCCGTGCGTGGCCTCCCCGCGCCGGACGCCGCCACCGCCTCGTCGT
 CCGCCTCGTCGCCGGCTTCTGTAGGGGACCCGTGCGGCGGCGCCGTCTGTGGCGGCCGGACCACAGCT
 ACGCCTGTGGAGCCTCTTCCAGACACTCGACGTCAACCGCGACGGCGCCCTGTGTGTCAACGACCTGGCG
 GTGGGGCTGCGGCGCCTGGGACTGCACCGCACGGAGGGCGAGCTCCGAAAAATTGTGCAAGCAGGTGACA
 AGGACCTTGATGGGCAACTGGACTTTGAAGAGTTTGTACATTACCTCCAAGATCATGAGAAAAAAGTGA
 GCTGGTGTCAAGAGTCTGGACAAAAAGAATGATGGTGAATCGATGCTCAGGAGATCATGCAGTCCCTG
 CGGACCTGGGTGTCAAGATCTCGGAACAGCAGGCGGAGAAGATTCTTAAGAGAATACGGACGGGCCACT
 TCTGGGGCCCTGTACCTACATGGATAAGAATGGCACGATGACCATCGACTGGAACGAGTGGAGGGACTA
 CCACCTCTGCACCTGTGGAGAACATCCCGGAGATCATCTGTACTGGAAGCACTCGACGATCTTCGAT
 GTCGGTGAGAATCTGACAGTCCCAGATGAGTTCACAGTGGAGGAGAGGCAGACGGGGATGTGGTGGAGGC
 ACCTGGTGGCAGGAGGTGGGGCAGGGGCAGTTCCAGAACCTGCACTGCCCCCTGGACAGACTGAAGGT
 GCTCATGCAGGTCCATGCCTCCCGCAGCAACAACATGTGCATCGTAGGTGGATTACACAGATGATTCTGA
 GAAGGGGGAGCCAAGTCACTCTGGCGGGCAACGGCATCAATGTCCTCAAAATTGCCCTGAGTCGGCCA
 TCAAAATTCATGGCATAAGAGCAGATGAAACGGCTTGTCCGTAGTGATCAGGAGACGCTGAGGATCCACGA
 AAGGCTTGTGGCAGGCTCCTTGGCCGGAGCCATTGCCAGAGTAGCATCTACCAATGGAGGTTCTGAAG
 ACCCGAATGGCCCTGCGGAAAACAGGACAGTACTCCGGCATGCTGGACTGTGCCAGGAGGATCTTGGCTA
 AAGAGGGTGTAGCTGCCTTCTACAAAGGCTACATCCCCAACATGCTGGGGATCATCCCCTATGCTGGCAT
 CGACCTAGCTGTCTATGAGACATTGAAAAAATACCTGGCTCCAGCGCTACGCAGTAAACAGTGCAGACCCC
 GGTGTGTTCTGTCTCCTGGCCTGTGGTACTATCTCCAGTACTTGTGGCCAGCTGGCCAGCTACCCACTAG
 CCCTGGTCAGGACCCGGATGCAGGCACAAGCCTCCATTGAGGGCGCACCTGAGGTAACCATGAGCAGCCT
 CTTCAAACAGATTCTGCGGACTGAGGGGGCCTTTGGGCTCTACCGGGGCTGGCCCCCAACTTCATGAAG
 GTGATCCCGGCTGTGAGCATCAGCTACGTGGTCTACGAAAACCTGAAGATCACCTGGGCGTGCAGTCTC
 GG

ACGCGTACGCGGCCGCTCGAG - GFP Tag - GTTTAA

Protein Sequence:

>MG208251 representing BC037109
 Red=Cloning site Green=Tags(s)

MVSSVLCRCVASPPPDAAATASSSASSPASVGDPCGGAVCGGPDHQLRLWSLFQTLDVNRDGLCVNDLA
 VGLRRLGLHRTEGELRKIVQAGDKLDLQQLDFEEFVHYLQDHEKKLRLVFKSLDKKNDGRIDAQEIMQSL
 RDLGVKISEQQAIEKILKIRITGHFWGPVYMDKNGTMTIDWNEWRDYHLLHPVENIPEIILYWKHSTIFD
 VGENLTVPDEFTVEERQTGMWWRHLVAGGGAGAVSRTCTAPLDRLKVLQVHASRSNNMCIYGGFTQMIR
 EGGAKSLWRNGINVLKIAPESAIKFMAYEQMKRLVGSQETLRIHERLVAGSLAGAIQSSIYPMEVLK
 TRMALRKTGQYSGMLDCARRILAKEGVAAFYKGYIPNMLGIIPYAGIDLAVYETLKNLWLRQYAVNSADP
 GVFVLLACGTISSTCGQLASYPLALVRTRMQAASIEGAPEVTMSSLFKQILRTEGAFGLYRGLAPNFMK
 VIPAVSISYVVYENLKITLGVQSR

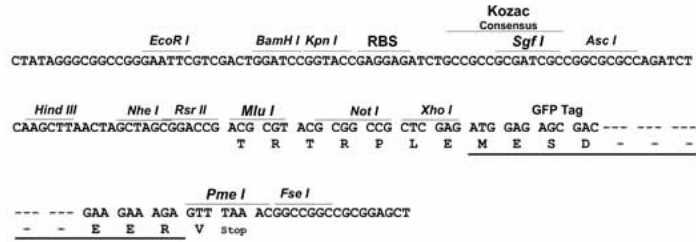
TRTRPLE - GFP Tag - V

Restriction Sites:

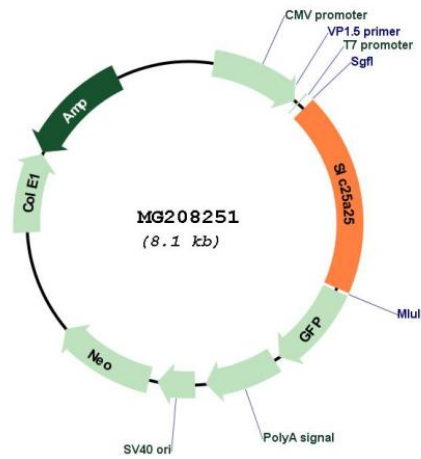
Sgfl-MluI

Cloning Scheme:

Cloning sites used for ORF Shutting:



Plasmid Map:



ACCN:	BC037109
ORF Size:	1544 bp
OTI Disclaimer:	The molecular sequence of this clone aligns with the gene accession number as a point of reference only. However, individual transcript sequences of the same gene can differ through naturally occurring variations (e.g. polymorphisms), each with its own valid existence. This clone is substantially in agreement with the reference, but a complete review of all prevailing variants is recommended prior to use. More info
OTI Annotation:	This clone was engineered to express the complete ORF with an expression tag. Expression varies depending on the nature of the gene.
Components:	The ORF clone is ion-exchange column purified and shipped in a 2D barcoded Matrix tube containing 10ug of transfection-ready, dried plasmid DNA (reconstitute with 100 ul of water).
Reconstitution Method:	<ol style="list-style-type: none">1. Centrifuge at 5,000xg for 5min.2. Carefully open the tube and add 100ul of sterile water to dissolve the DNA.3. Close the tube and incubate for 10 minutes at room temperature.4. Briefly vortex the tube and then do a quick spin (less than 5000xg) to concentrate the liquid at the bottom.5. Store the suspended plasmid at -20°C. The DNA is stable for at least one year from date of shipping when stored at -20°C.
RefSeq:	BC037109 , AAH37109
RefSeq Size:	3410 bp
RefSeq ORF:	1544 bp
Locus ID:	227731
Cytogenetics:	2 B
Gene Summary:	Calcium-dependent mitochondrial solute carrier. Mitochondrial solute carriers shuttle metabolites, nucleotides, and cofactors through the mitochondrial inner membrane. May act as a ATP-Mg/Pi exchanger that mediates the transport of Mg-ATP in exchange for phosphate, catalyzing the net uptake or efflux of adenine nucleotides into or from the mitochondria (By similarity).[UniProtKB/Swiss-Prot Function]