

Product datasheet for **MG208245**

Plrg1 (NM_016784) Mouse Tagged ORF Clone

Product data:

Product Type:	Expression Plasmids
Product Name:	Plrg1 (NM_016784) Mouse Tagged ORF Clone
Tag:	TurboGFP
Symbol:	Plrg1
Synonyms:	AA958940; C80566; Tango4
Mammalian Cell Selection:	Neomycin
Vector:	pCMV6-AC-GFP (PS100010)
E. coli Selection:	Ampicillin (100 ug/mL)



[View online »](#)

ORF Nucleotide Sequence:

>MG208245 representing NM_016784
 Red=Cloning site Blue=ORF Green=Tags(s)

TTTTGTAATACGACTCACTATAGGGCGGCCGGAATTCGTCGACTGGATCCGGTACCGAGGAGATCTGCC
 GCC**CGGATCGCC**

ATGGTGGAGGAGTACAGAAGCATTCTGTACACACTGGTGTTCAGGTCATTGAAGAGGACCCATGACA
 TGTTTGTGGCTGATAATGGAAAACCGTGCCTTTGGATGAAGAGAGTCACAAGCGGAAAAATGGCAATCAA
 GCTTCGCAATGAGTATGGTCCTGTGCTGCATATGCCTACTTCAAAAAGAGAACCTTAAGGAGAAGGGACCT
 CAGAACGCAACAGACTCATATCCTCATAAGCAGTATCCCGCCAACCAAGGACAAGATGTTGAGTATTTGG
 TGACAGGCACCCATCCATACCCAGCAGGACCCGGTGTTCCTTGACTGCTGATACTAAGTCCAGAGAAT
 GCCAAGTGAAGTGCAGTGCACAGTCCCTCGCTGTGGCGTTACCGTCCAGACCAGAGTTGATGCAAAATCGT
 ACTGGGCTGCTGGAAGTGAAGTACCGACACCCAGGGGCTTCTGACCGTCCAGCCACAGCAATGAATT
 CTATTATGGAGACCGGCAACACTAAGAAGTCTGCACTAATGGCGAAAAAGCCCCACGATGCCCAAACC
 CCAGTGGCACCCACCGTGGAAACTCTACAGGGTATCAGTGGGCATCTTGCTGGGTTCCGGTGTATCGCT
 GTGGAACCTGGAAATCAGTGGTTCGTTACAGGATCTGCTGACAGAACCATAAAGATTTGGGACTTGGCTA
 GTGGCAAATTAAGCTGTCTGTTGACTGGCCACATCAGTACAGTGCCTGGTGTGATCGTGAGCAGGAGGAG
 TCCTTATTTGTTCTTTGTGGAGAAGACAAACAAGTGAAGTGTGGGATCTTGAATATAACAAGGTGATA
 CGGCACATCATGGCCATCTAAGTGCAGTGTATGGTCTGGATTTGACCCCAACATTGGATGTCTCTGGTGA
 CTTGTAGTCGAGATCCACTGCTCGGATCTGGGACGTGAGAACTAAAGCCAGTGTACACACTTTGTCTGG
 ACACACAAATGCAGTGTCTACCGTGAGATGCCAGGCTGCAGAGCCACAGATCATTACAGGAAGTCCAGT
 ACCACAATACGATTATGGGATCTAGTGGCTGGAAAGACACGAGTGCAGTGCAGAACCAATAAGAAATCAG
 TGAGGGCTGTGGTCTTACATCCGCTACTTACACATTTGCGTCTGGTTCTCCAGATAACATAAAGCAGTG
 GAAATTCGCCGATGGAGGCTTCAAAAATCTCTCTGGTCAACAATGCAATCATTAAACACGCTGGCGGTC
 AATGCTGATGGAGTGCTGTGTCTGGAGCTGACAAATGGCACCATGCACCTTTGGGACTGGAGAAGTGGCT
 ATAATTTTCAGCGCTCCATGCAGCTGTACAGCCTGGGCTTTTGGACAGTGAAGTCAAGGAATATTTGCTTG
 TGCTTTTCGATCGGTGAGAAAGTCGGTACTAACGGCTGAAGCTGATAAAACCATTAAAGTTTACAGAGAG
 GATGAGACTGCGACAGAAGAACTACCCAGTCACTGGAACCAGAAATATCAAGAGAAAGCGATTT

ACGCGTACGCGGCCGCTCGAG – GFP Tag – GTTTAA

Protein Sequence:

>MG208245 representing NM_016784
 Red=Cloning site Green=Tags(s)

MVEEVQKHSVHTLVFRSLKRTHDMFVADNGKPVPLDEESHKRKMAIKLRNEYGPVLHMPTSKENLKEKGP
 QNATDSYPHKQYPANQGQDVEYLVGTGHPYPAGPGVALTADTKIQRMPSESAAQSLAVALPSQTRVDANR
 TGPAGSEYRHPGASDRSQPTAMNSIMETGNTKNSALMAKKAPTMPKQWHPPWKLYRVISGHLGWVRCIA
 VEPGNQWFVTGSADRTIKIWLASGKLLSLTGHI STVRGVIVSTRSPYLFSCGEDKQVKCWDLEYNKVI
 RHVYHGLSAVYGLDLHPTLDVLVTCRSDSTARIWDVVRTKASVHTLSGHTNAVATVRCQAAEPQIITGSHD
 TTIRLWDLVAGKTRVTLTNHKKSVRAVVLHPLLTYFASGSPDNKQWKFPDGGFIQNL SGHNAIINTLAV
 NADGVLVSGADNGTMHLWDWRTGYNFQRVHAAVQPGSLDSESGIFACAFDRSESRLLTAEADKTIKVVRE
 DETATEETHPVSWKPEIIKRKRF

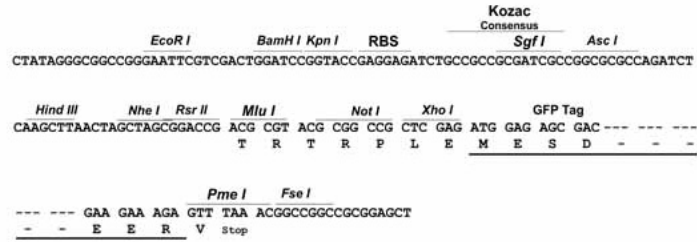
TRTRPLE – GFP Tag – V

Restriction Sites:

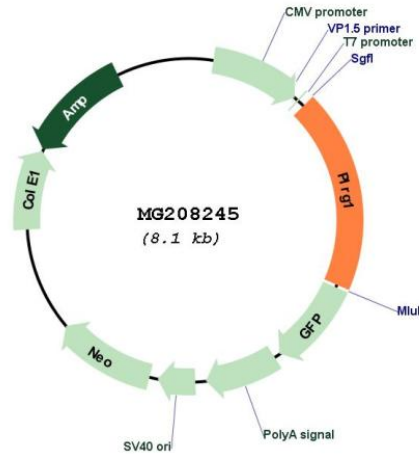
Sgfl-MluI

Cloning Scheme:

Cloning sites used for ORF Shutting:



Plasmid Map:



ACCN: NM_016784

ORF Size: 1539 bp

OTI Disclaimer: The molecular sequence of this clone aligns with the gene accession number as a point of reference only. However, individual transcript sequences of the same gene can differ through naturally occurring variations (e.g. polymorphisms), each with its own valid existence. This clone is substantially in agreement with the reference, but a complete review of all prevailing variants is recommended prior to use. [More info](#)

OTI Annotation: This clone was engineered to express the complete ORF with an expression tag. Expression varies depending on the nature of the gene.

Components: The ORF clone is ion-exchange column purified and shipped in a 2D barcoded Matrix tube containing 10ug of transfection-ready, dried plasmid DNA (reconstitute with 100 ul of water).

Reconstitution Method:

1. Centrifuge at 5,000xg for 5min.
2. Carefully open the tube and add 100ul of sterile water to dissolve the DNA.
3. Close the tube and incubate for 10 minutes at room temperature.
4. Briefly vortex the tube and then do a quick spin (less than 5000xg) to concentrate the liquid at the bottom.
5. Store the suspended plasmid at -20°C. The DNA is stable for at least one year from date of shipping when stored at -20°C.

RefSeq: [NM_016784.3](#)

RefSeq Size: 1772 bp

RefSeq ORF: 1542 bp

Locus ID: 53317

UniProt ID: [Q922V4](#)

Cytogenetics: 3 E3

Gene Summary: Involved in pre-mRNA splicing as component of the spliceosome. Component of the PRP19-CDC5L complex that forms an integral part of the spliceosome and is required for activating pre-mRNA splicing.[UniProtKB/Swiss-Prot Function]