

## Product datasheet for **MG208228**

### Chrna2 (NM\_144803) Mouse Tagged ORF Clone

#### Product data:

Product Type:	Expression Plasmids
Product Name:	Chrna2 (NM_144803) Mouse Tagged ORF Clone
Tag:	TurboGFP
Symbol:	Chrna2
Synonyms:	Acra-2; Acra2; BC011490
Mammalian Cell Selection:	Neomycin
Vector:	pCMV6-AC-GFP (PS100010)
E. coli Selection:	Ampicillin (100 ug/mL)



[View online »](#)

**ORF Nucleotide Sequence:**

>MG208228 representing NM\_144803  
 Red=Cloning site Blue=ORF Green=Tags(s)

TTTTGTAATACGACTCACTATAGGGCGGCCGGAATTCGTCGACTGGATCCGGTACCGAGGAGATCTGCC  
 GCC**CGCATCGCC**

ATGGCCCCCTCCCATCTGCTTTCCAGTCTCGGATACATCTTTATCTCTGGTGTCTGCTTCTGATGCCAG  
 CAGTGTGGCCAGCAAGGCTCGCACACCCATGCCGAGGACCGCTGTTCAAACACCTCTTTGGAGGCTA  
 CAATCGCTGGGCACGGCCAGTGCCCAACACTTCCGATGTGGTCATCGTGGCTTTGGACTATCCATTGCA  
 CAGCTCATAGATGTGGATGAGAAGAATCAAATGATGACCACCAATGTCTGGCTAAAGCAGGAATGGAATG  
 ACTACAAGCTGCGCTGGGACCCGGCTGAGTTTGGCAACATCACCTCCCTCCGCTCCCCTCAGAGATGAT  
 CTGGATCCAGACATTGTTCTCTACAACAATGCAGACGGGGAGTTTGGGTGACCCACATGACCAAGGCC  
 CACCTCTTCTTCCGCGCACTGTGACTGGGTGCCCCAGCCATCTACAAGAGCTCCTGCAGCATCGACG  
 TGACTTTCTTCCCTTCGACCAGCAGAAGTGAAGTGAAGTTTGGCTCCTGGACATACGACAAGGCCAA  
 GATCGACTGGAGCAGATGGAGCGGACGGTGGACCTGAAGGACTACTGGGAGAGCGGCGAGTGGCCATT  
 ATCAACGCCACCCGAACCTATAACAGCAAGAAGTACGACTGCTGCGCGGAGATCTACCCCGACGTACCT  
 ACTACTTCGTTATCCGCCGGCTGCCGCTGTTCTACACCATCAACCTCATTATCCCGTGCCTGCTCATCTC  
 CTGCTCACCGTCTCGTGTCTACTTGCCTCTGAGTGTGGAGAGAAGTACAGCTGTGCATCTCGGTG  
 CTGCTCTCCCTCACTGTCTTCTGCTGCTCATCACAGAAATATCCCATCCACCTCACTGGTCATCCAC  
 TCATCGGCGAGTACCTGCTCTTACCATGATCTTCGTCACCCTCTCTATTGTGATCACAGTCTTCGTGCT  
 CAATGTCCACCACCGTCCCTAGCACGCACAACATGCCAACTGGGTGAGGGTGGCCCTGCTAGGCCGG  
 GTGCCCCGGTGGCTGATGATGAATCGGCCCTGCCGCCATGGAGCTCCATGGCTCTCCAGTCTGAAGC  
 TCAGCCCCACTTATCATTGGCTGGAGACCAACATGGATGCTGAAGAAAGGAGGAGACAGAGGAAGAGG  
 GGAGGAGGAAGAAGATGAAACATATGTATGTGTGCAGGCCTCCAGACTCTCCATGGGTGCTCCTAT  
 GGCCATGGCAGCCTGCATCTGAGGGCCATGGGCTGAGGCCAAGACTCCATCCAGGCTAGTGAGATCC  
 TGCTGTCACTCAAATACAGAAAGCACTAGAAGGTGTACACTACATTGCTGACCACCTGAGGTCTGAGGA  
 TGCTGACTCTTCGGTGAAGGAAGATTGGAAGTATGTGGCCATGGTGGTAGACCGGATCTTCTCTGGCTG  
 TTCATTATCGTCTGCTTCTGGGACCATCGGGCTCTTCTCCCTCCGTTCTGGCTGGAATGATC

**ACGCGTACGCGGCCGCTCGAG** - GFP Tag - GTTTAA

**Protein Sequence:**

>MG208228 representing NM\_144803  
 Red=Cloning site Green=Tags(s)

MAPSHPAFQFWIHLYLWCLLLMPAVLAQQGSHTHAEDRLFKHLFGGYNRWARVPVNTSDVVIVRFLSIA  
 QLIDVDEKNQMMTTNVWLKQEWNDYKLRWDPAEFGNITSLRVPSEMIWIPDIVLYNNADGEFVTHMTKA  
 HLFFTGTVHWVPPAIYKSSCSIDVTFPPFDQNCMKMFGSWTYDKAKIDLEQMERTVDLKDYWESGEWAI  
 INATGTYNSSKYDCCAIEYPDVYFVIRRLPLFYINLIIPCLLISCLTVLVFYL PSECGEKITLCISV  
 LLSLTVFLLLITEIIPSTSLVIPLIGEYLLFTMIFVTL SIVITVFLNVHHRSPSTHNPVWRVALLGR  
 VPRWLMNRPLPMEHLHGSPGLKLSPTYHWLETNMDAEEEREETEEEEEEEDENICMAGLPDSSMGVLY  
 GHGSLHLRAMPEAKTPSQASEILLSPQIQKALEGVHYIADHLRSEDADSSVKEDWKYVAMVVDRIFLWL  
 FIIVCFGLGTIGLFLPPFLAGMI

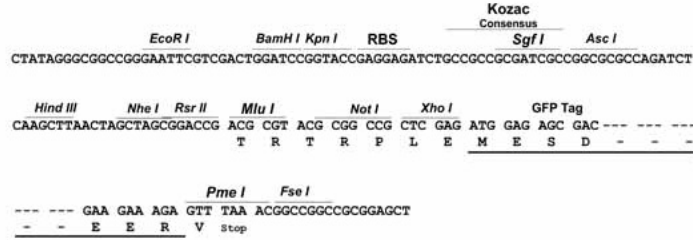
**TRTRPLE** - GFP Tag - V

**Restriction Sites:**

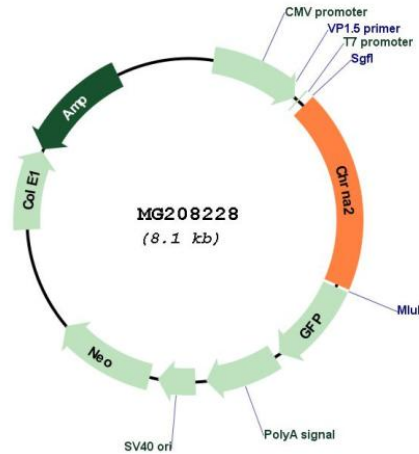
Sgfl-MluI

Cloning Scheme:

Cloning sites used for ORF Shutting:



Plasmid Map:



**ACCN:** NM\_144803

**ORF Size:** 1536 bp

**OTI Disclaimer:** The molecular sequence of this clone aligns with the gene accession number as a point of reference only. However, individual transcript sequences of the same gene can differ through naturally occurring variations (e.g. polymorphisms), each with its own valid existence. This clone is substantially in agreement with the reference, but a complete review of all prevailing variants is recommended prior to use. [More info](#)

**OTI Annotation:** This clone was engineered to express the complete ORF with an expression tag. Expression varies depending on the nature of the gene.

**Components:** The ORF clone is ion-exchange column purified and shipped in a 2D barcoded Matrix tube containing 10ug of transfection-ready, dried plasmid DNA (reconstitute with 100 ul of water).

**Reconstitution Method:**

1. Centrifuge at 5,000xg for 5min.
2. Carefully open the tube and add 100ul of sterile water to dissolve the DNA.
3. Close the tube and incubate for 10 minutes at room temperature.
4. Briefly vortex the tube and then do a quick spin (less than 5000xg) to concentrate the liquid at the bottom.
5. Store the suspended plasmid at -20°C. The DNA is stable for at least one year from date of shipping when stored at -20°C.

**RefSeq:** [NM\\_144803.2](#), [NP\\_659052.1](#)

**RefSeq Size:** 3527 bp

**RefSeq ORF:** 1539 bp

**Locus ID:** 110902

**UniProt ID:** [Q91X60](#)

**Cytogenetics:** 14 34.36 cM

**Gene Summary:** After binding acetylcholine, the AChR responds by an extensive change in conformation that affects all subunits and leads to opening of an ion-conducting channel across the plasma membrane.[UniProtKB/Swiss-Prot Function]